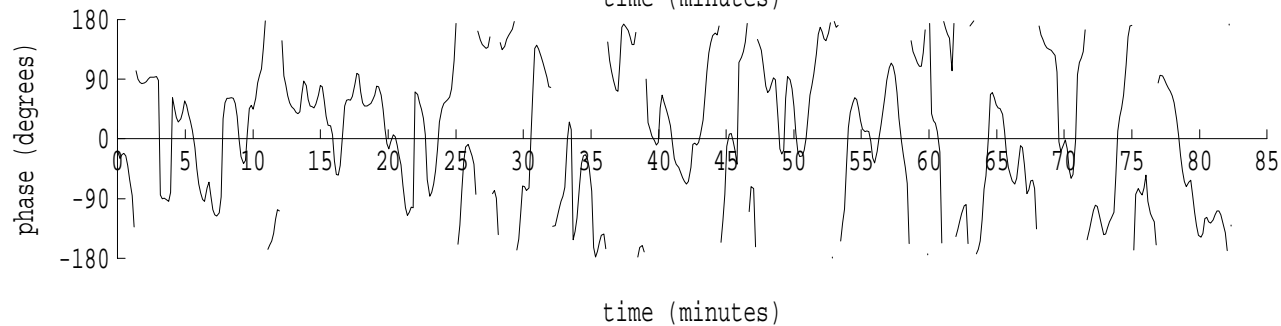
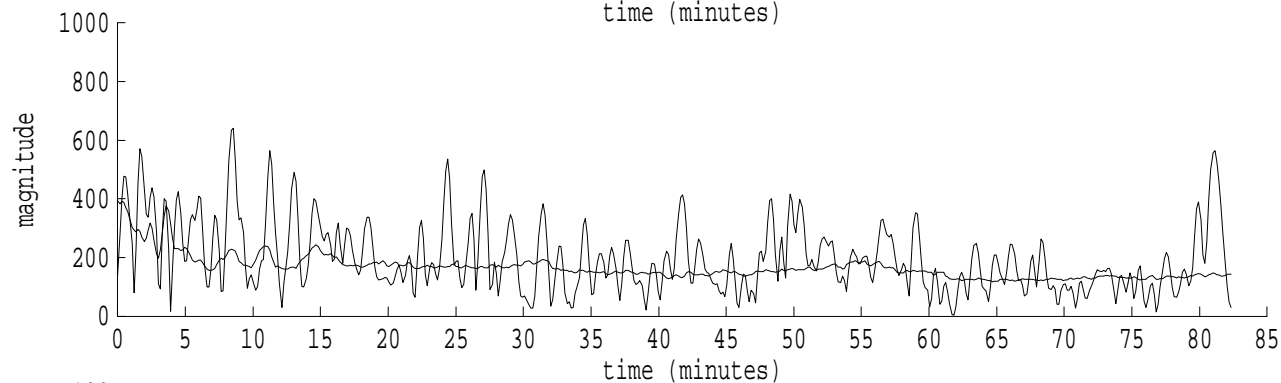
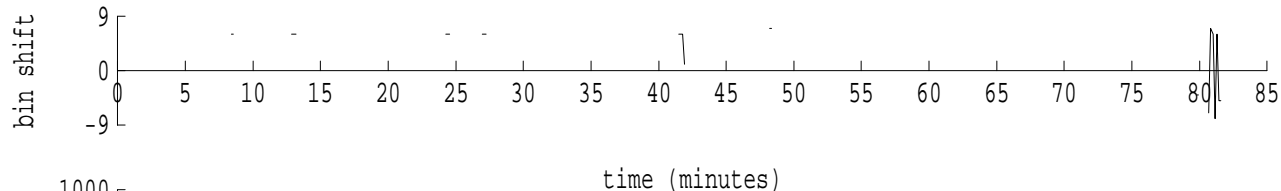
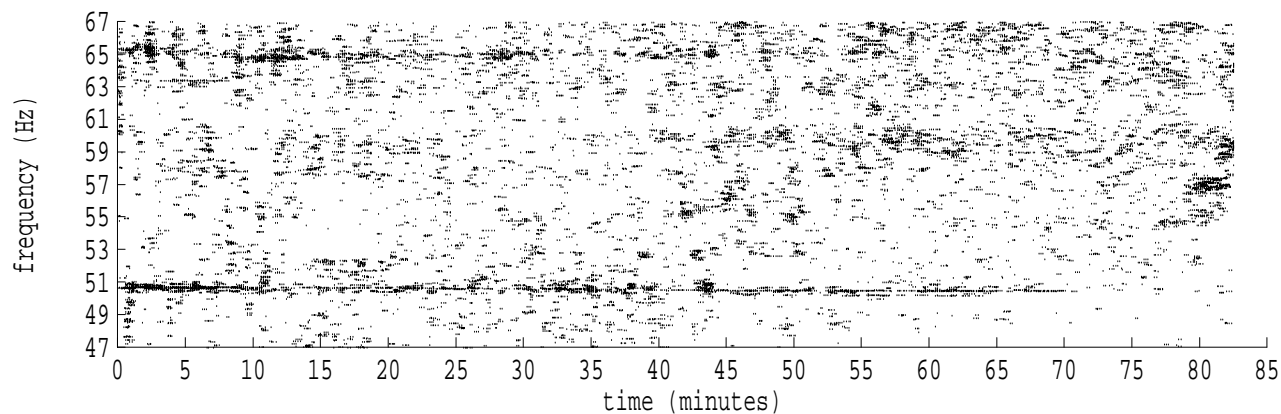
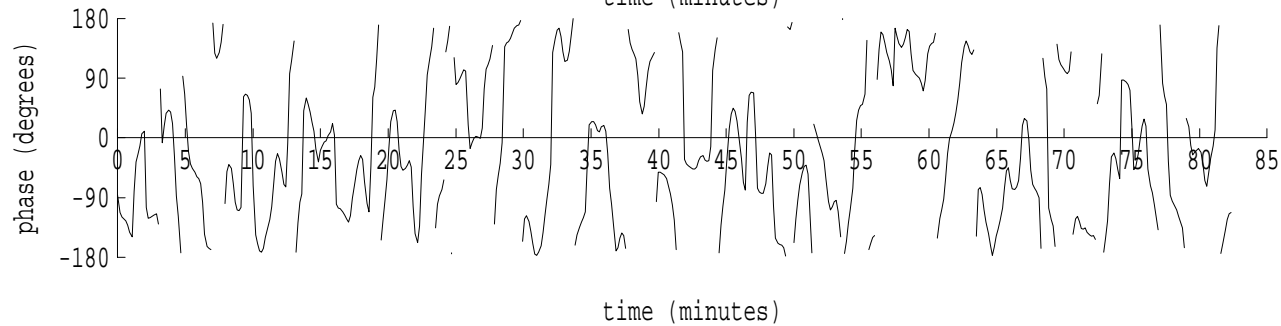
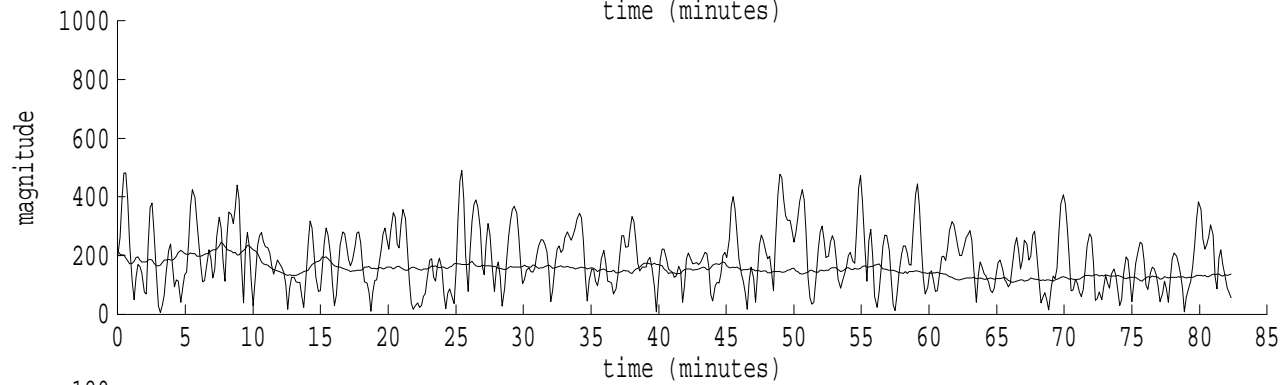
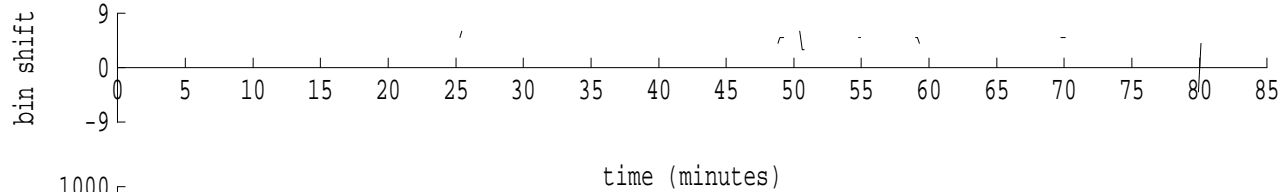
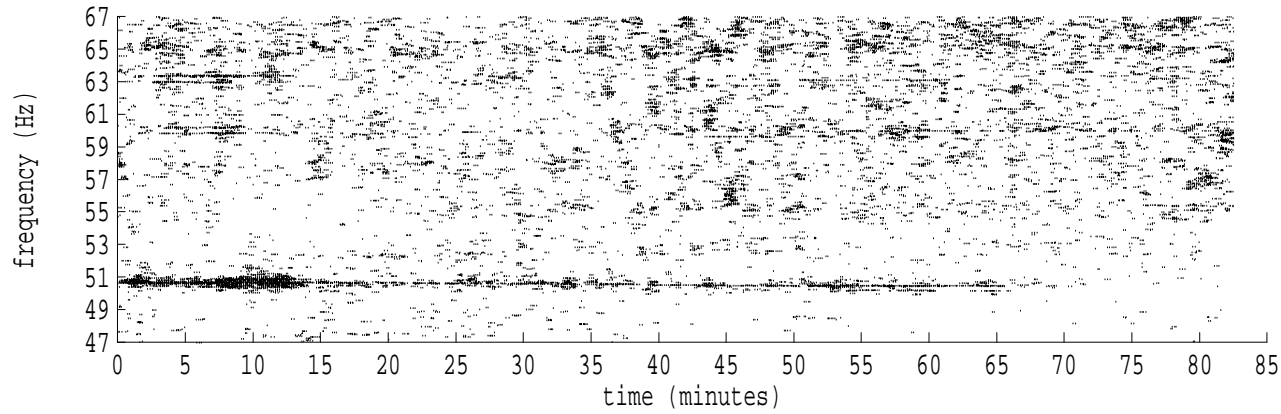


Heard Island - West Coast (U.S.) File: w0281507.sam Ch. 1 Julian:028:15:07:11



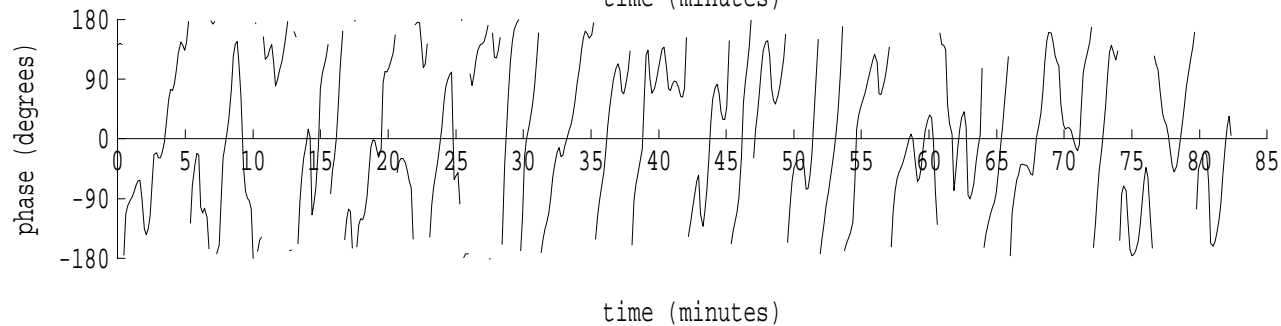
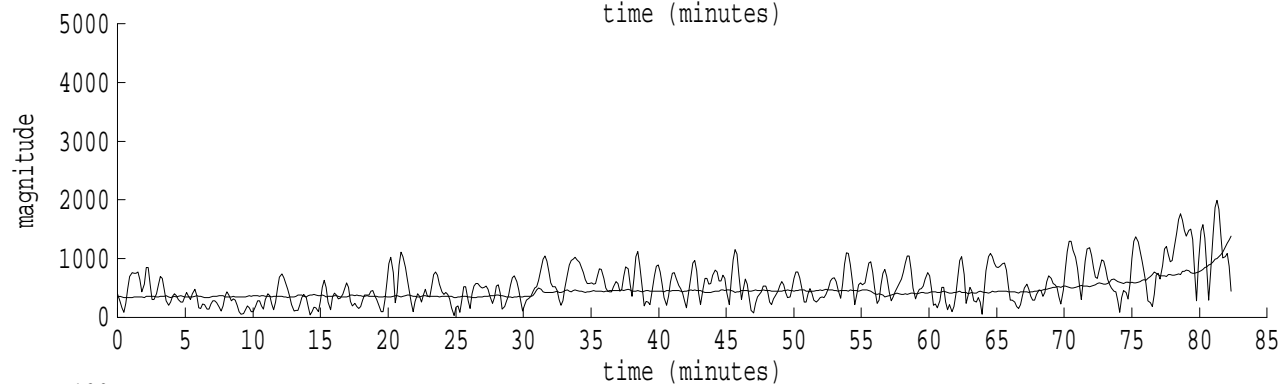
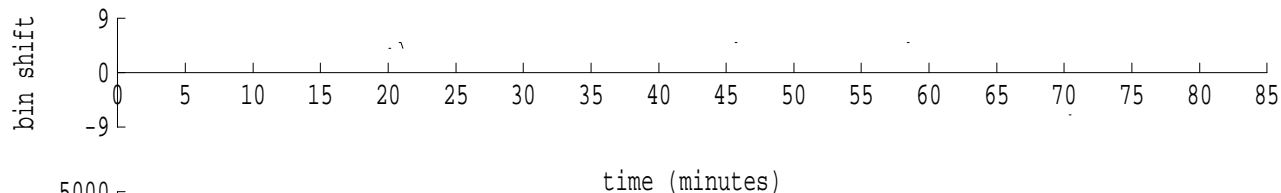
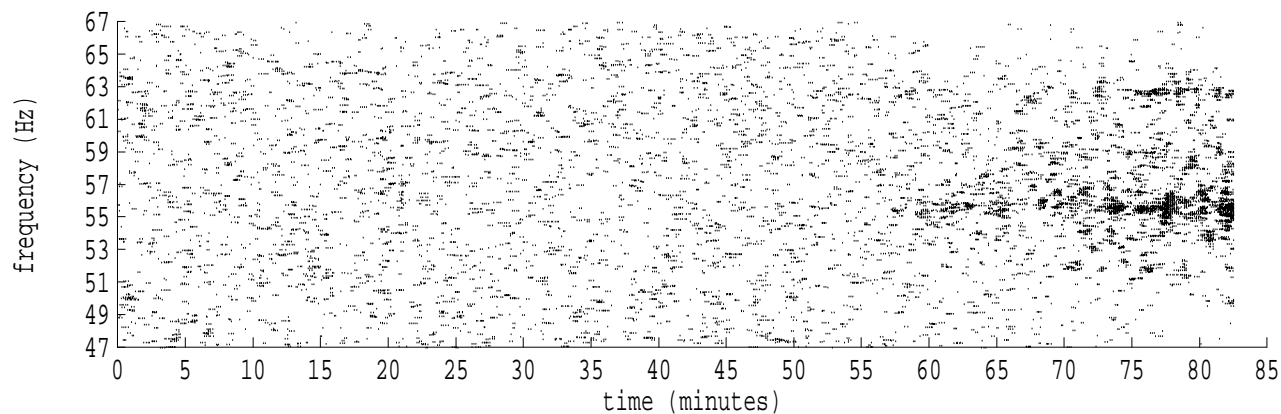
fft size: 16384
overlap: 7/8
sw_hamm: 1
sample rate: 228 Hz
bin width: 0.0139 Hz
int time: 71.86 sec
bin freq: 57.083 Hz
threshold: 2.50
r_max: 821
c rms: 467
n (rms): 29
offset: 6
pkr median: 383
ave median: 166
nor median: 166
sdv median: 43
n median: 542
peak snr: 13.8 dB
c snr: 9.0 dB
sw_line: 1
sw_theta: 1
freq: 57.0842 Hz
ship spd: 2.212 m/s
4.302 knts

Heard Island - West Coast (U.S.) File: w0281507.sam Ch. 2 Julian:028:15:07:11



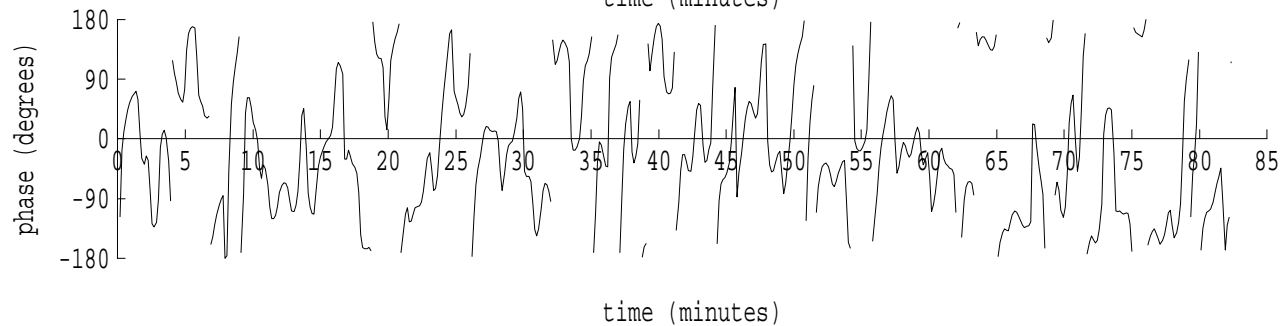
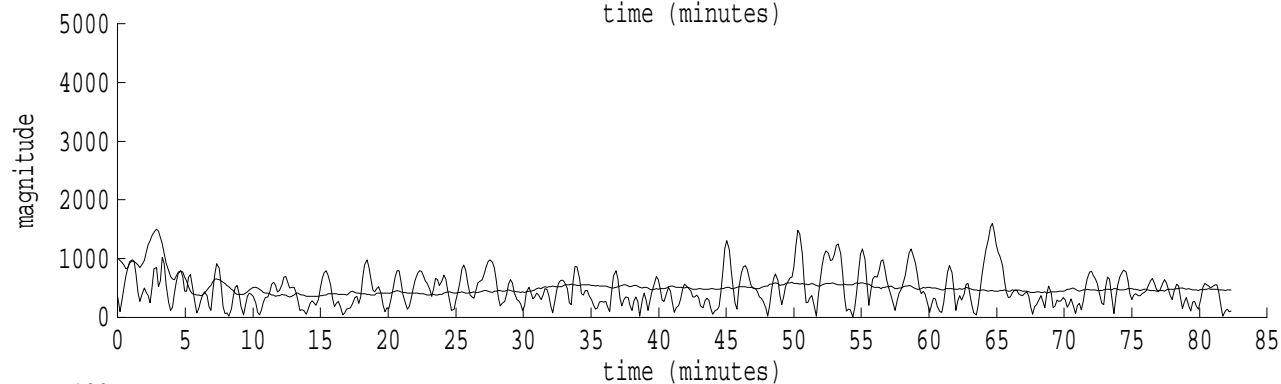
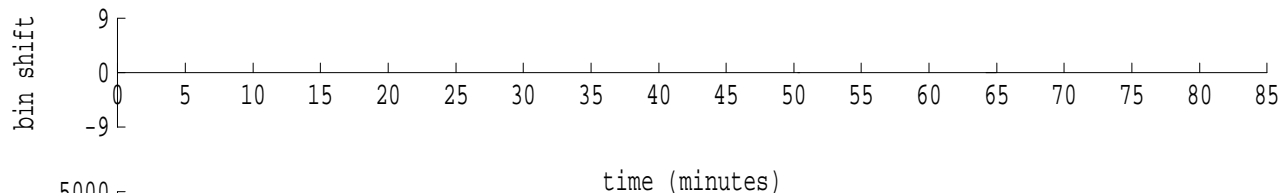
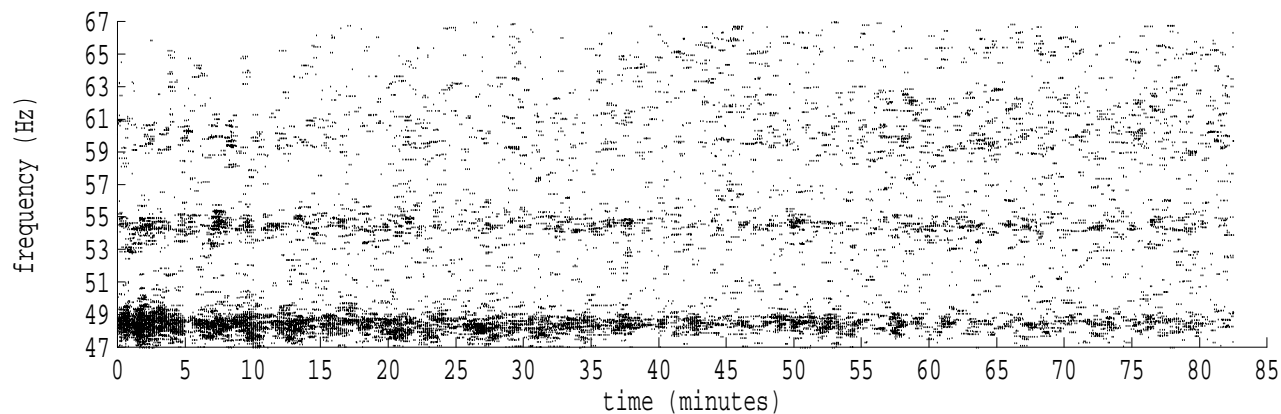
fft size: 16384
overlap: 7/8
sw_hamm: 1
sample rate: 228 Hz
bin width: 0.0139 Hz
int time: 71.86 sec
bin freq: 57.070 Hz
threshold: 2.50
r_max: 692
c rms: 421
n (rms): 20
offset: 5
pkr median: 179
ave median: 153
nor median: 153
sdv median: 25
n median: 545
peak snr: 13.1 dB
c snr: 8.8 dB
sw_line: 1
sw_theta: 1
freq: 57.0687 Hz
ship spd: 1.805 m/s
3.509 knts

Heard Island - West Coast (U.S.) File: w0281507.sam Ch. 3 Julian:028:15:07:11



fft size: 16384
overlap: 7/8
sw_hamm: 1
sample rate: 228 Hz
bin width: 0.0139 Hz
int time: 71.86 sec
bin freq: 57.070 Hz
threshold: 2.50
r_max: 3475
c rms: 1088
n (rms): 12
offset: 5
pkr median: 948
ave median: 453
nor median: 450
sdv median: 139
n median: 550
peak snr: 17.7 dB
c snr: 7.7 dB
sw_line: 1
sw_theta: 1
freq: 57.0661 Hz
ship spd: 1.737 m/s
3.378 knts

Heard Island - West Coast (U.S.) File: w0281507.sam Ch. 4 Julian:028:15:07:11



fft size: 16384
overlap: 7/8
sw_hamm: 1
sample rate: 228 Hz
bin width: 0.0139 Hz
int time: 71.86 sec
bin freq: 57.000 Hz
threshold: 2.50
r_max: 2565
c rms: 1400
n (rms): 9
offset: 0
pkr median: 1445
ave median: 506
nor median: 506
sdv median: 148
n median: 547
peak snr: 14.1 dB
c snr: 8.8 dB
sw_line: 1
sw_theta: 1
freq: 56.9982 Hz
ship spd: -0.048 m/s
-0.093 knts