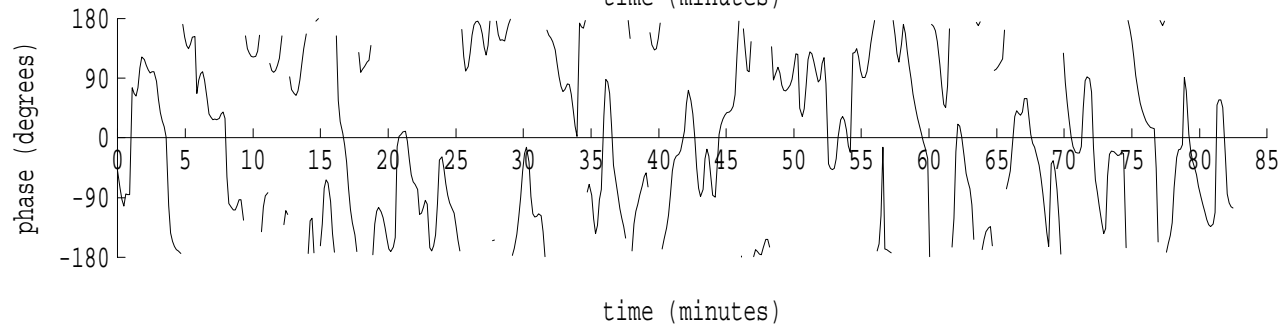
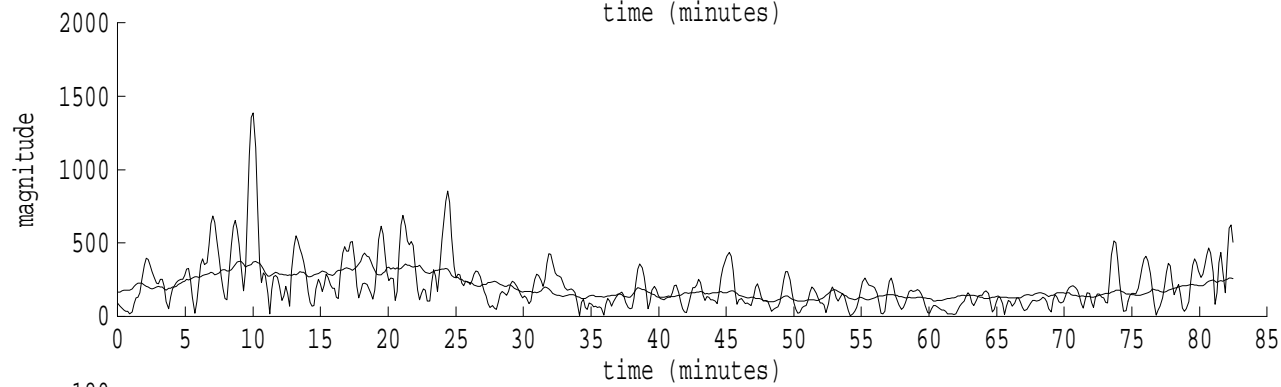
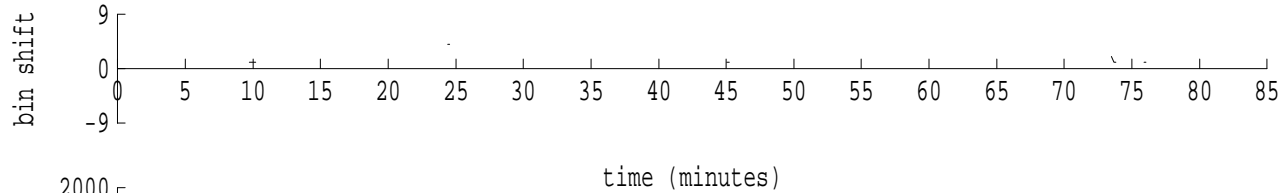
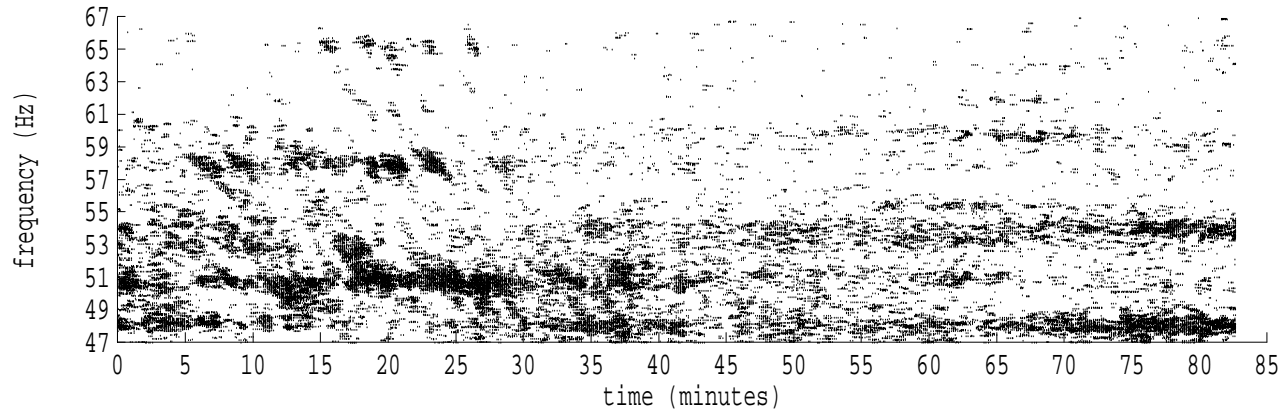
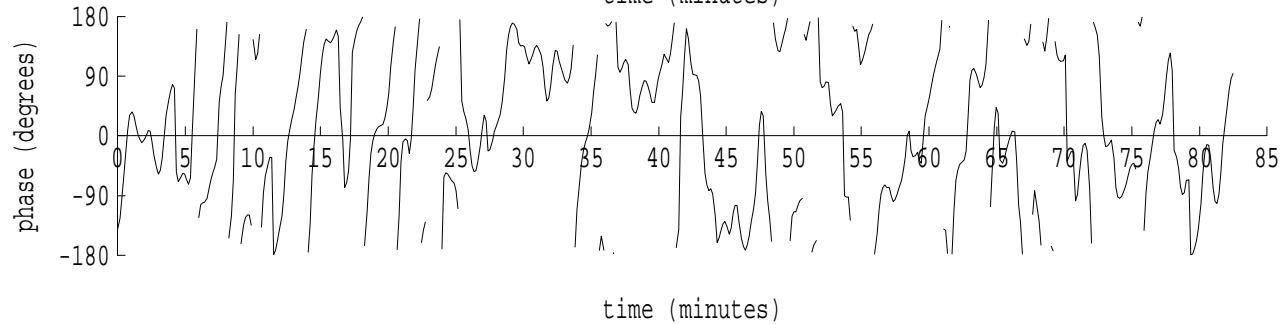
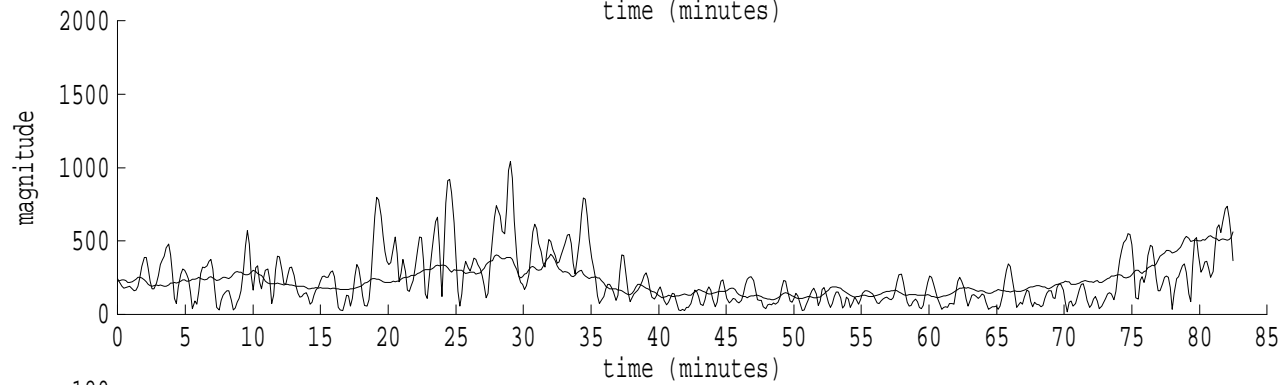
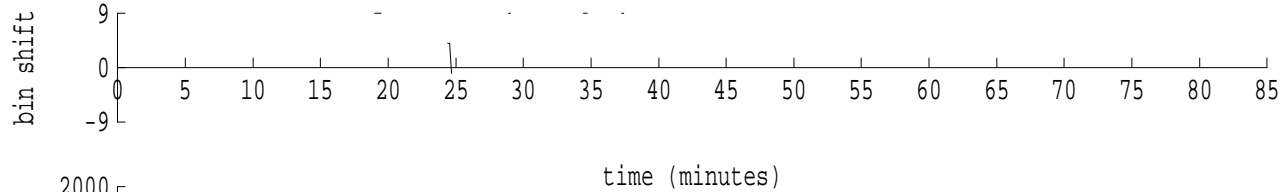
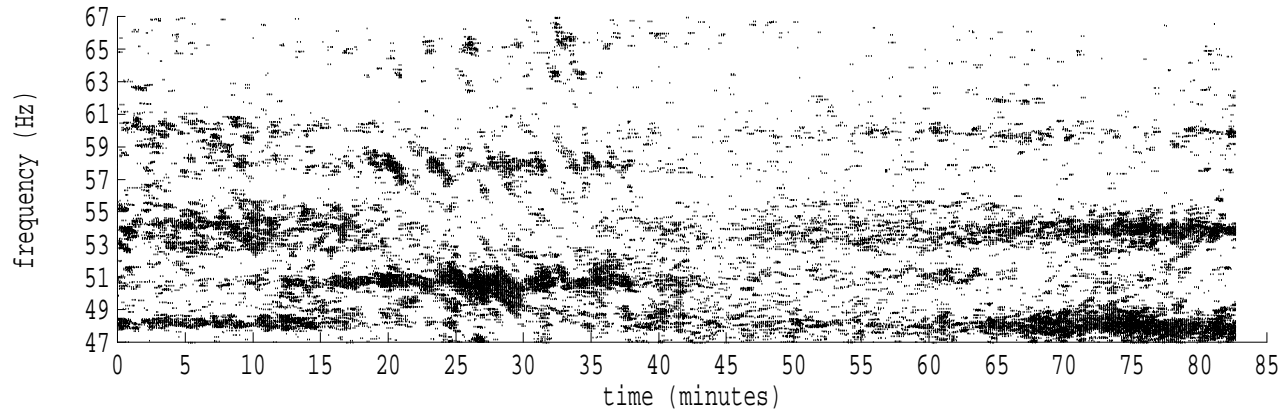


Heard Island - West Coast (U.S.) File: w0280007.sam Ch. 1 Julian:028:00:07:05



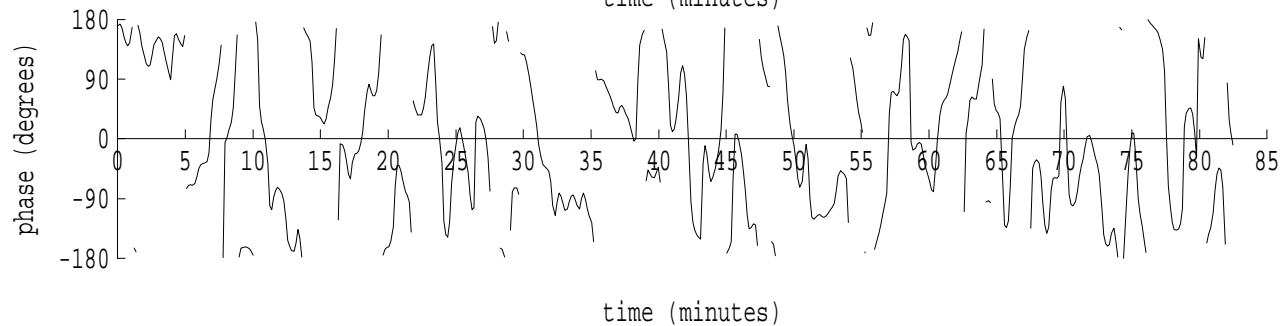
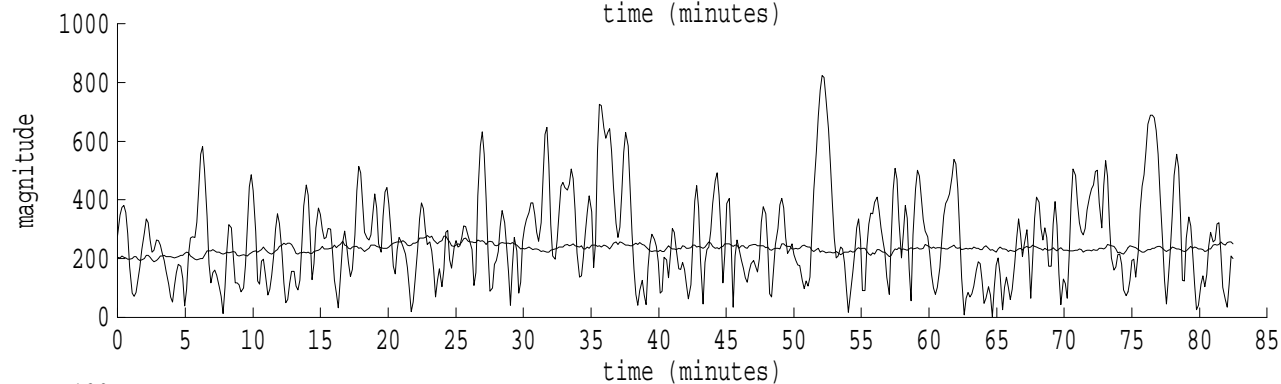
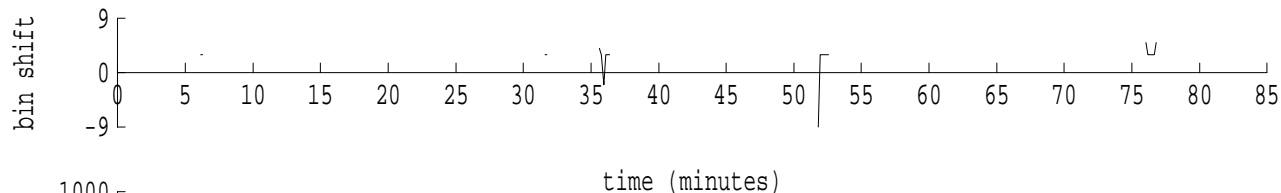
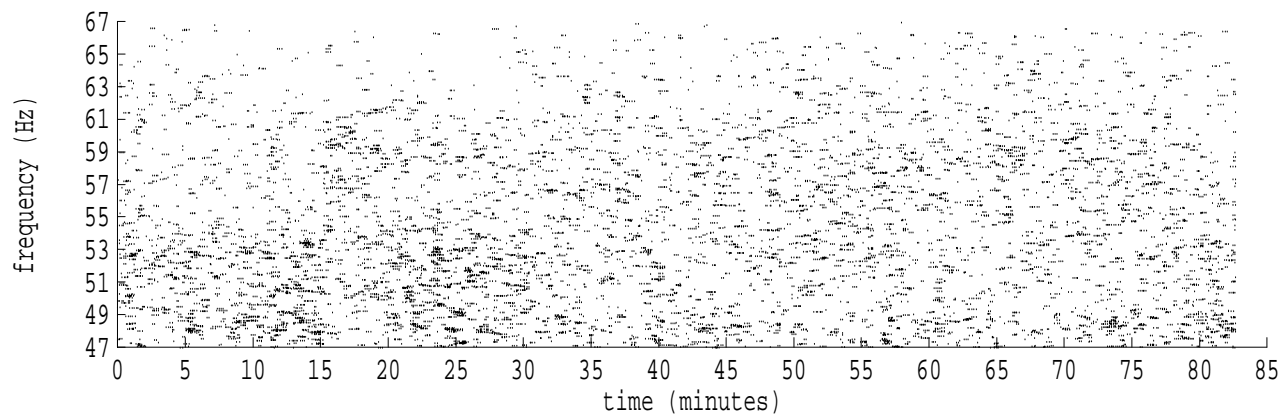
fft size: 16384  
overlap: 7/8  
sw\_hamm: 1  
sample rate: 228 Hz  
bin width: 0.0139 Hz  
int time: 71.86 sec  
bin freq: 57.014 Hz  
threshold: 2.50  
r\_max: 1504  
c rms: 831  
n (rms): 13  
offset: 1  
pkr median: 284  
ave median: 196  
nor median: 194  
sdv median: 74  
n median: 547  
peak snr: 17.8 dB  
c snr: 12.6 dB  
sw\_line: 1  
sw\_theta: 1  
freq: 57.0149 Hz  
ship spd: 0.391 m/s  
0.761 knts

Heard Island - West Coast (U.S.) File: w0280007.sam Ch. 2 Julian:028:00:07:05



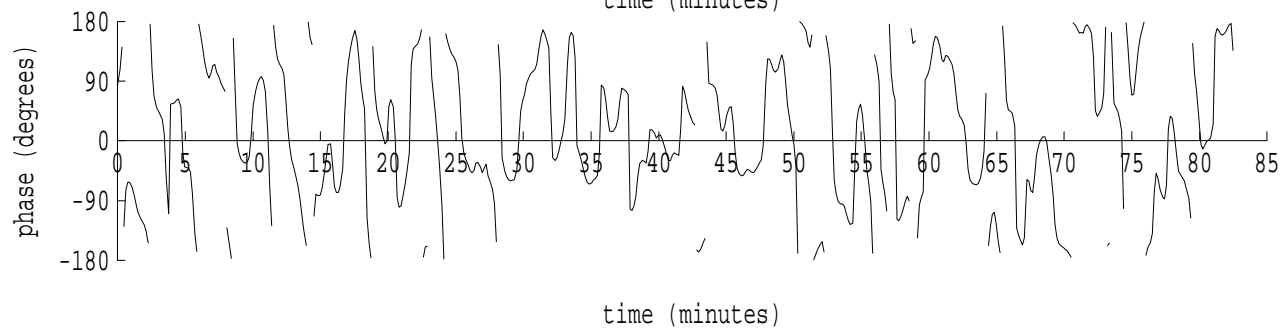
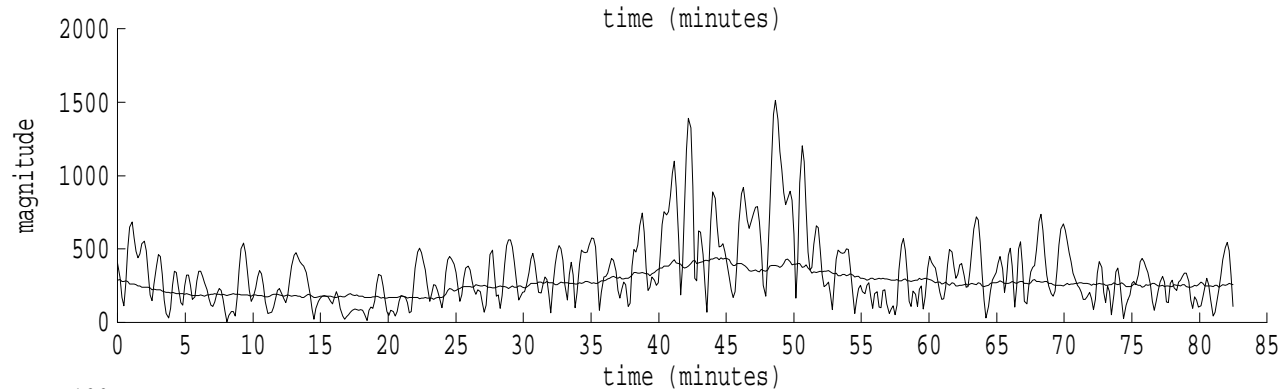
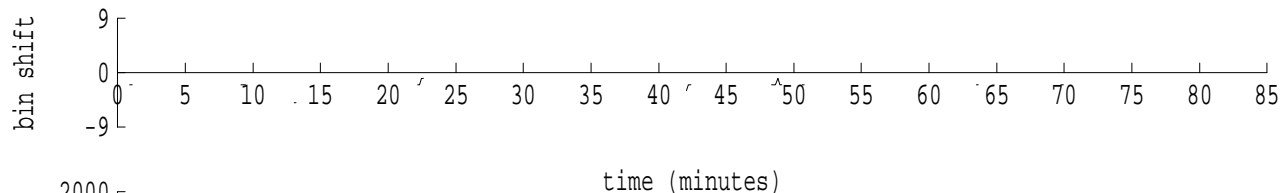
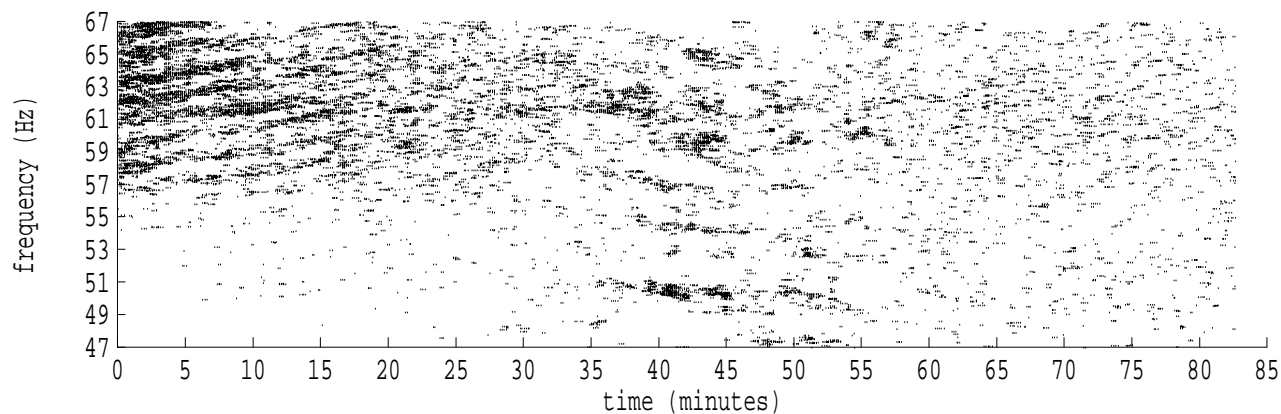
fft size: 16384  
overlap: 7/8  
sw\_hamm: 1  
sample rate: 228 Hz  
bin width: 0.0139 Hz  
int time: 71.86 sec  
bin freq: 57.125 Hz  
threshold: 2.50  
r\_max: 1261  
c rms: 782  
n (rms): 14  
offset: 9  
pkr median: 226  
ave median: 227  
nor median: 226  
sdv median: 97  
n median: 549  
peak snr: 14.9 dB  
c snr: 10.8 dB  
sw\_line: 1  
sw\_theta: 1  
freq: 57.1228 Hz  
ship spd: 3.226 m/s  
6.274 knts

Heard Island - West Coast (U.S.) File: w0280007.sam Ch. 3 Julian:028:00:07:05



fft size: 16384  
overlap: 7/8  
sw\_hamm: 1  
sample rate: 228 Hz  
bin width: 0.0139 Hz  
int time: 71.86 sec  
bin freq: 57.042 Hz  
threshold: 2.50  
r\_max: 891  
c rms: 674  
n (rms): 23  
offset: 3  
pkr median: 251  
ave median: 234  
nor median: 234  
sdv median: 14  
n median: 547  
peak snr: 11.6 dB  
c snr: 9.2 dB  
sw\_line: 1  
sw\_theta: 1  
freq: 57.0421 Hz  
ship spd: 1.106 m/s  
2.150 knts

Heard Island - West Coast (U.S.) File: w0280007.sam Ch. 4 Julian:028:00:07:05



fft size: 16384  
overlap: 7/8  
sw\_hamm: 1  
sample rate: 228 Hz  
bin width: 0.0139 Hz  
int time: 71.86 sec  
bin freq: 56.972 Hz  
threshold: 2.50  
r\_max: 1559  
c rms: 928  
n (rms): 28  
offset: -2  
pkr median: 425  
ave median: 264  
nor median: 262  
sdv median: 67  
n median: 543  
peak snr: 15.5 dB  
c snr: 11.0 dB  
sw\_line: 1  
sw\_theta: 1  
freq: 56.9732 Hz  
ship spd: -0.705 m/s  
-1.372 knts