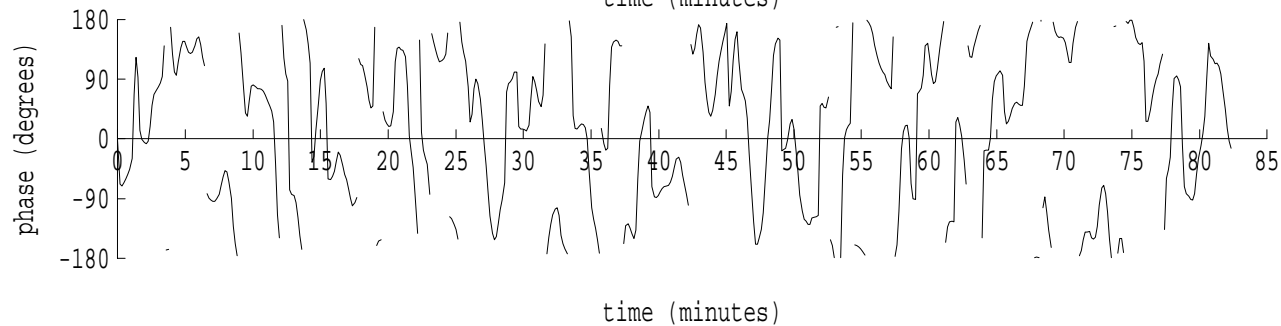
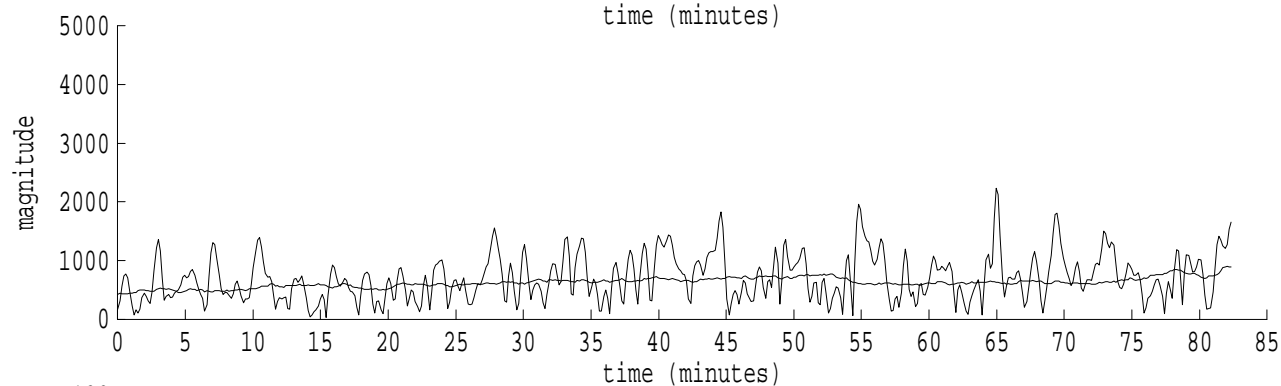
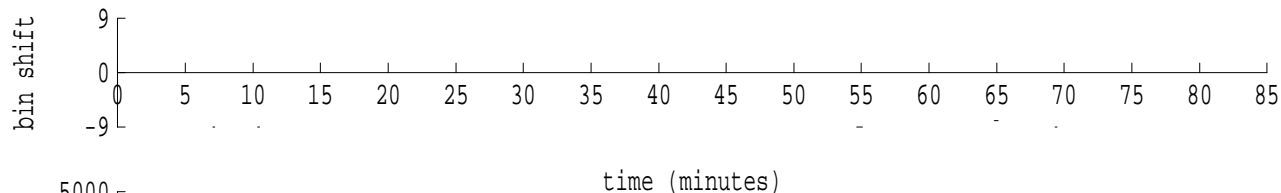
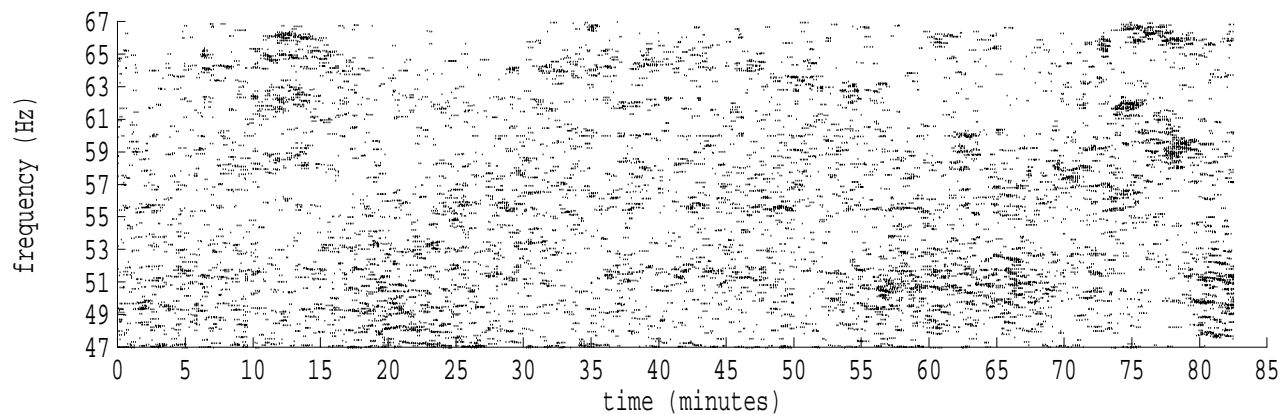
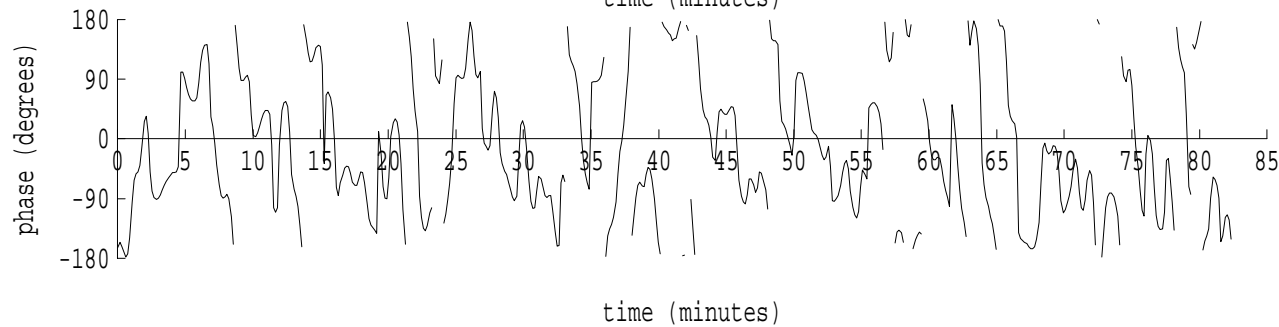
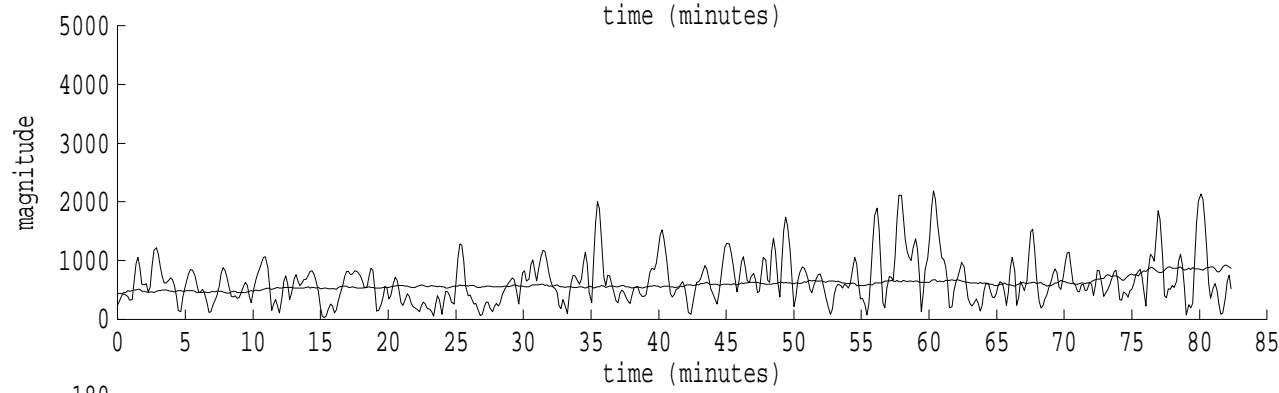
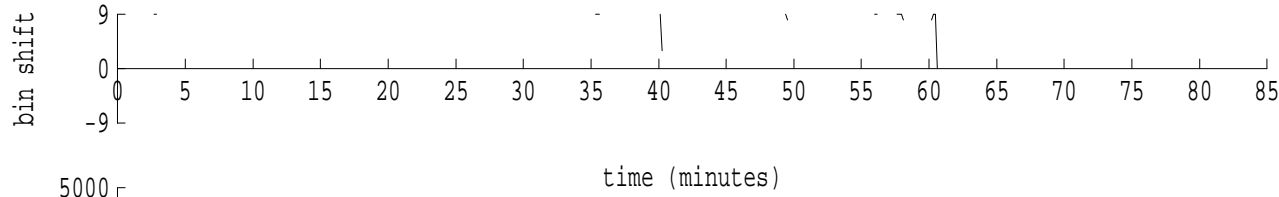
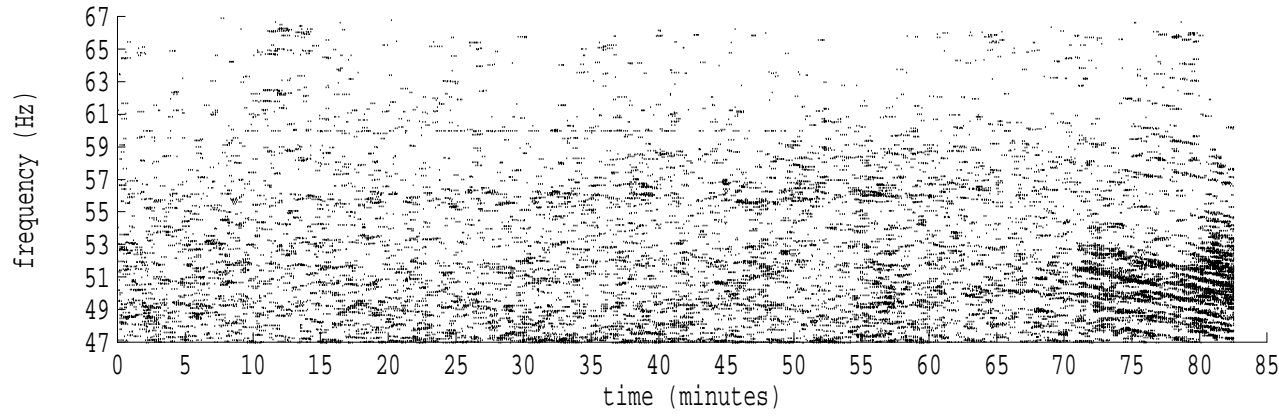


Heard Island - West Coast (U.S.) File: w0261516.sam Ch. 1 Julian:026:15:16:11



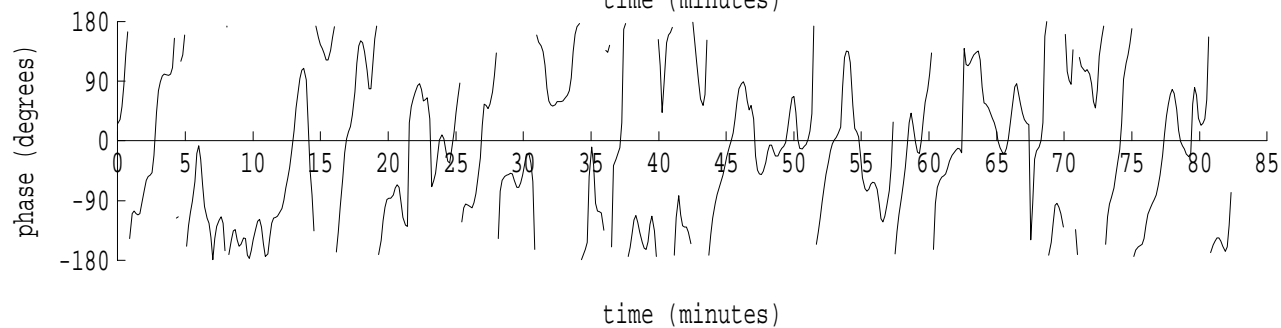
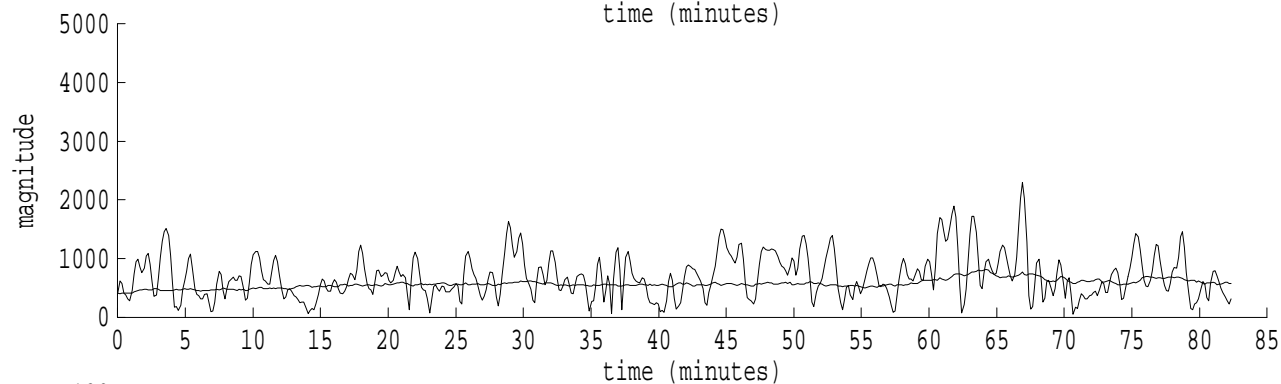
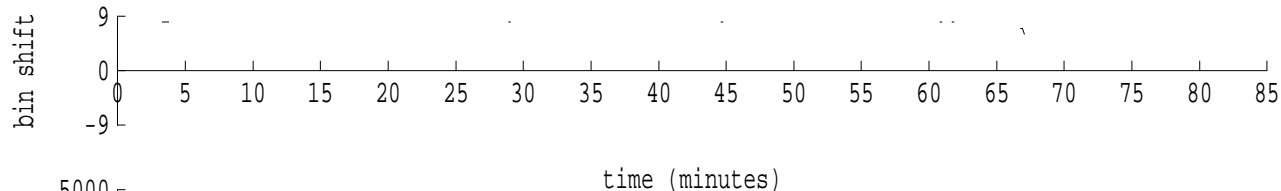
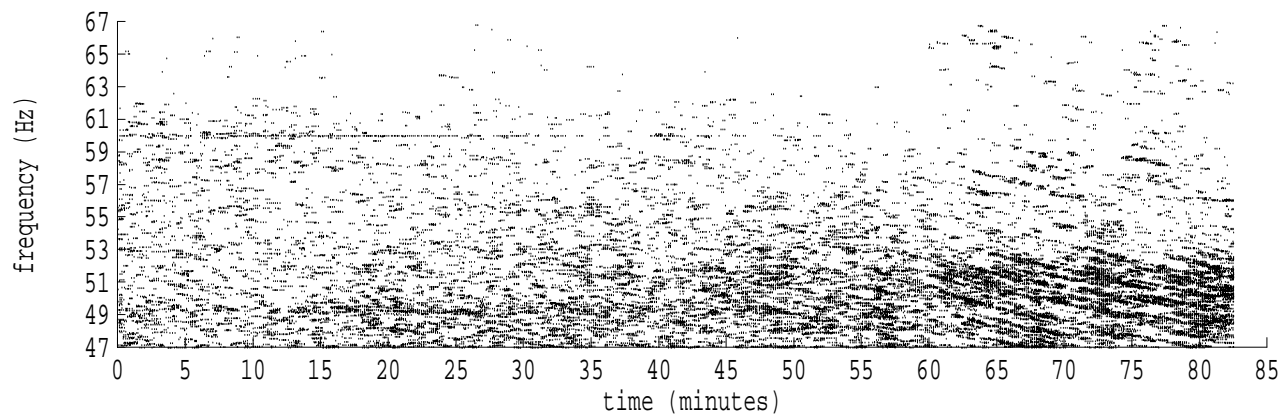
fft size: 16384  
overlap: 7/8  
sw\_hamm: 1  
sample rate: 228 Hz  
bin width: 0.0139 Hz  
int time: 71.86 sec  
bin freq: 56.875 Hz  
threshold: 2.50  
r\_max: 2875  
c rms: 1699  
n (rms): 16  
offset: -9  
pkr median: 649  
ave median: 628  
nor median: 627  
sdv median: 85  
n median: 547  
peak snr: 13.2 dB  
c snr: 8.7 dB  
sw\_line: 1  
sw\_theta: 1  
freq: 56.8748 Hz  
ship spd: -3.290 m/s  
-6.398 knts

Heard Island - West Coast (U.S.) File: w0261516.sam Ch. 2 Julian:026:15:16:11



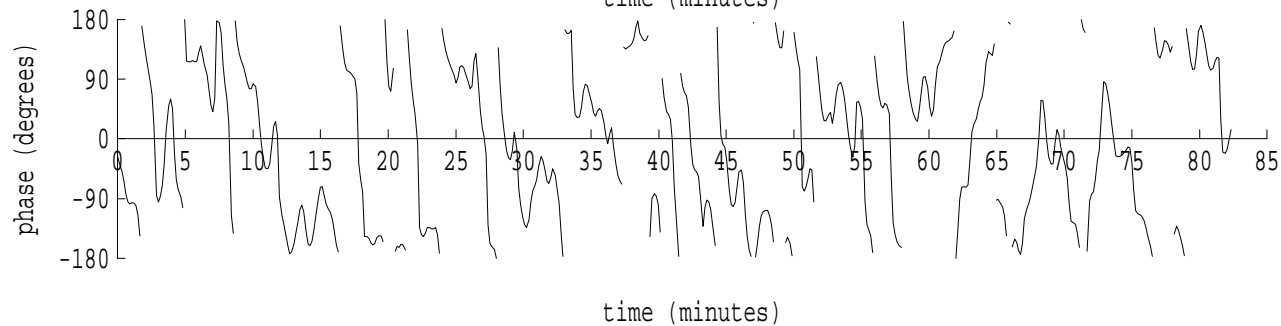
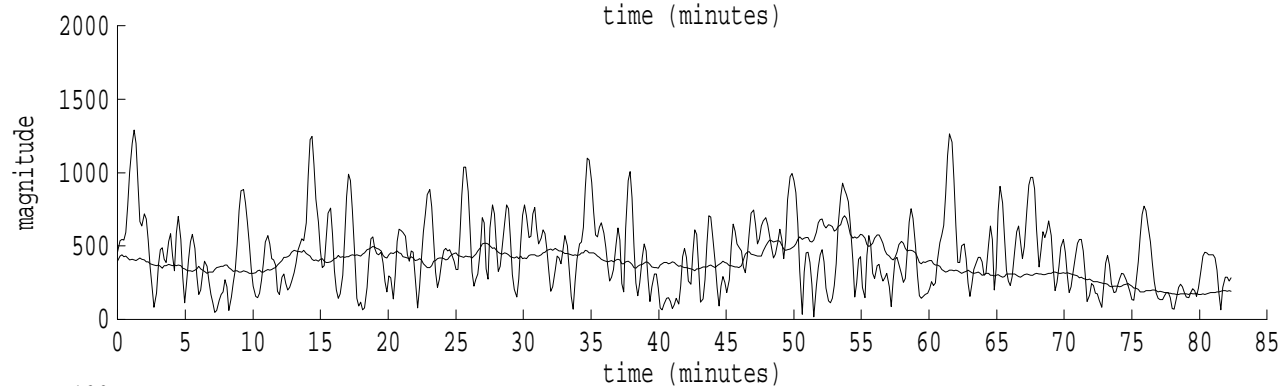
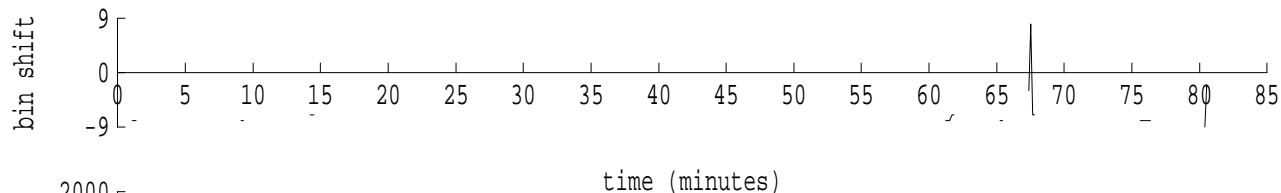
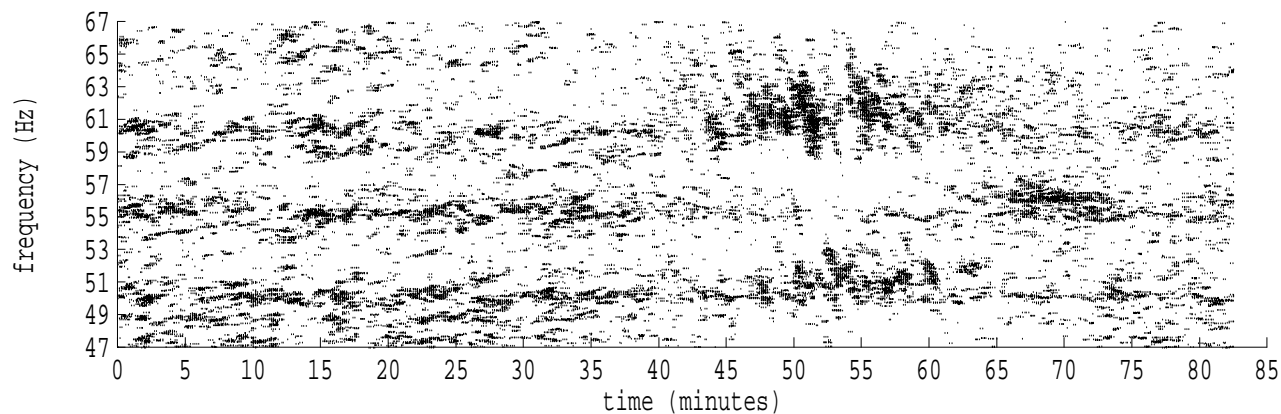
fft size: 16384  
overlap: 7/8  
sw\_hamm: 1  
sample rate: 228 Hz  
bin width: 0.0139 Hz  
int time: 71.86 sec  
bin freq: 57.125 Hz  
threshold: 2.50  
r\_max: 4517  
c rms: 1796  
n (rms): 20  
offset: 9  
pkr median: 891  
ave median: 600  
nor median: 599  
sdv median: 99  
n median: 543  
peak snr: 17.5 dB  
c snr: 9.5 dB  
sw\_line: 1  
sw\_theta: 1  
freq: 57.1266 Hz  
ship spd: 3.327 m/s  
6.470 knts

Heard Island - West Coast (U.S.) File: w0261516.sam Ch. 3 Julian:026:15:16:11



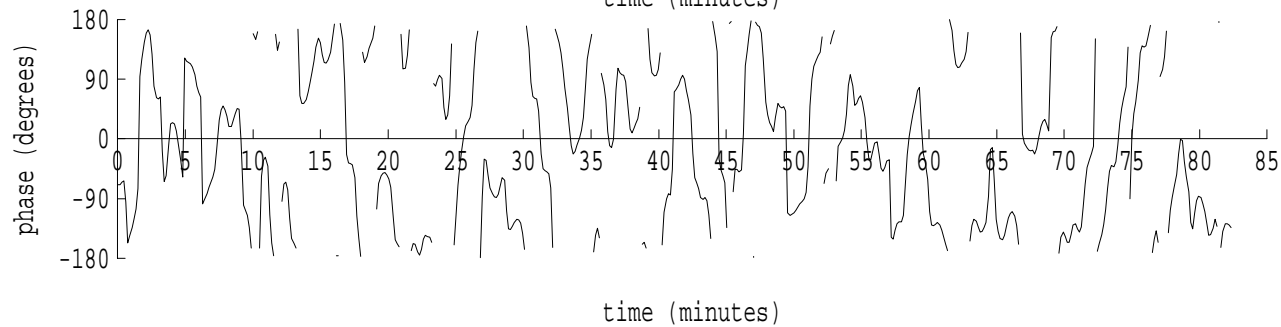
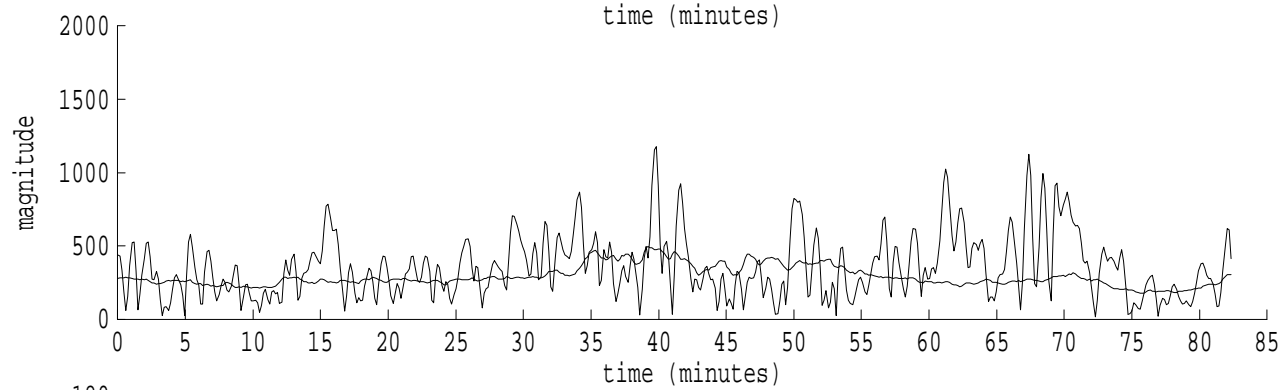
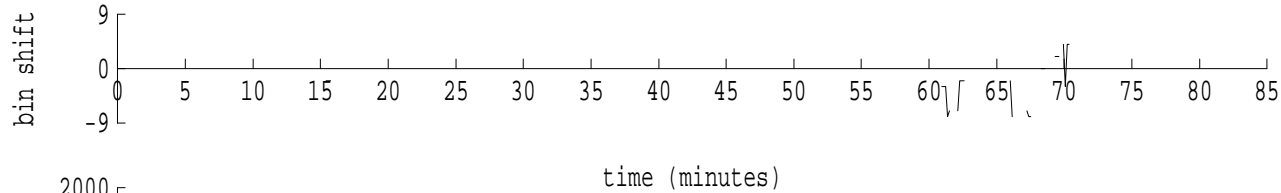
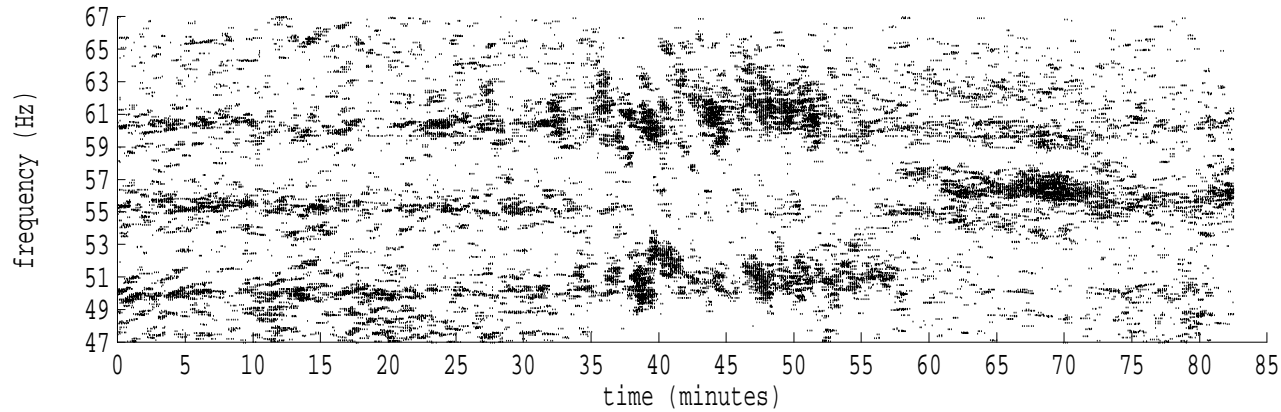
fft size: 16384  
overlap: 7/8  
sw\_hamm: 1  
sample rate: 228 Hz  
bin width: 0.0139 Hz  
int time: 71.86 sec  
bin freq: 57.111 Hz  
threshold: 2.50  
r\_max: 4817  
c rms: 1683  
n (rms): 16  
offset: 8  
pkr median: 720  
ave median: 571  
nor median: 571  
sdv median: 72  
n median: 548  
peak snr: 18.5 dB  
c snr: 9.4 dB  
sw\_line: 1  
sw\_theta: 1  
freq: 57.1100 Hz  
ship spd: 2.892 m/s  
5.623 knts

Heard Island - West Coast (U.S.) File: w0261516.sam Ch. 4 Julian:026:15:16:11



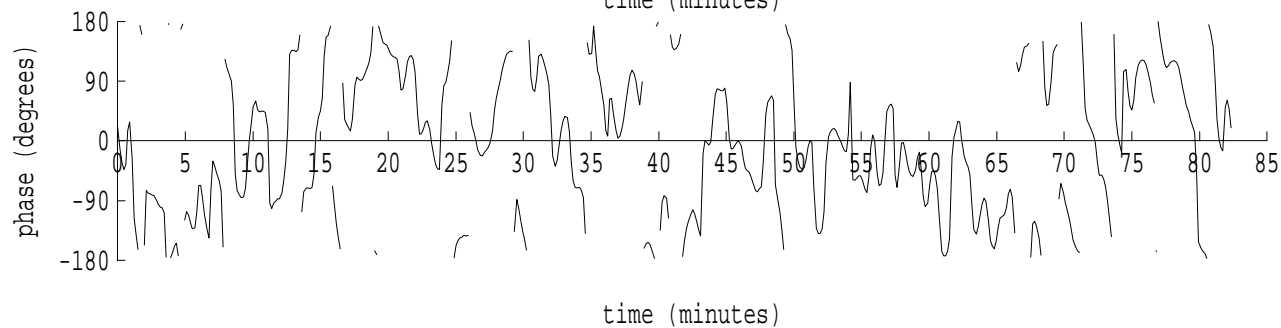
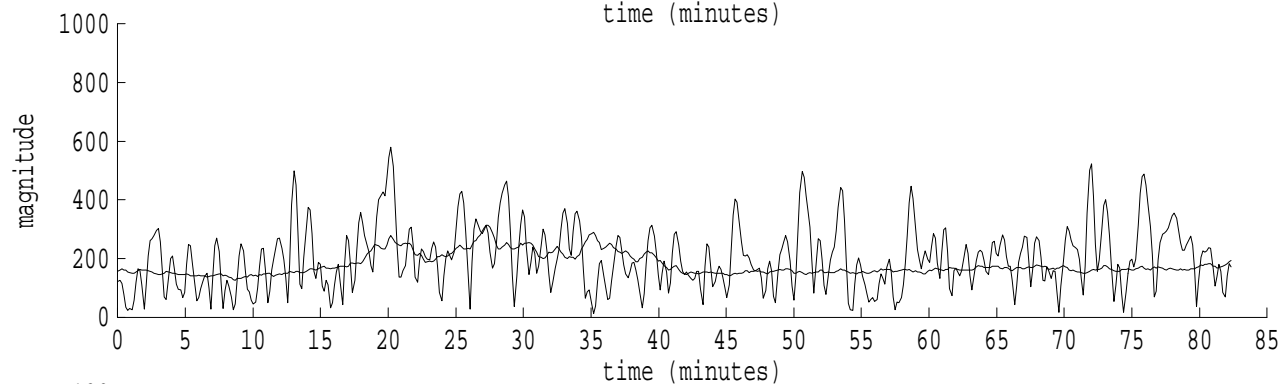
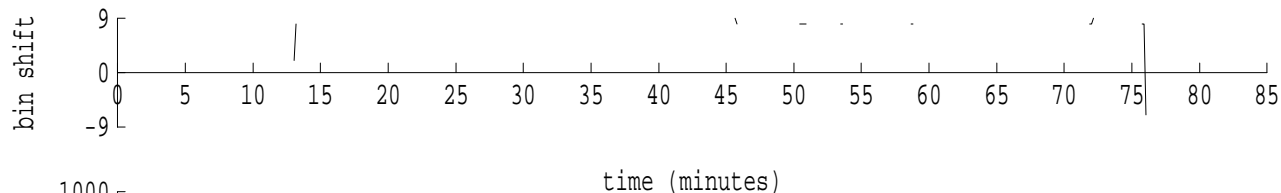
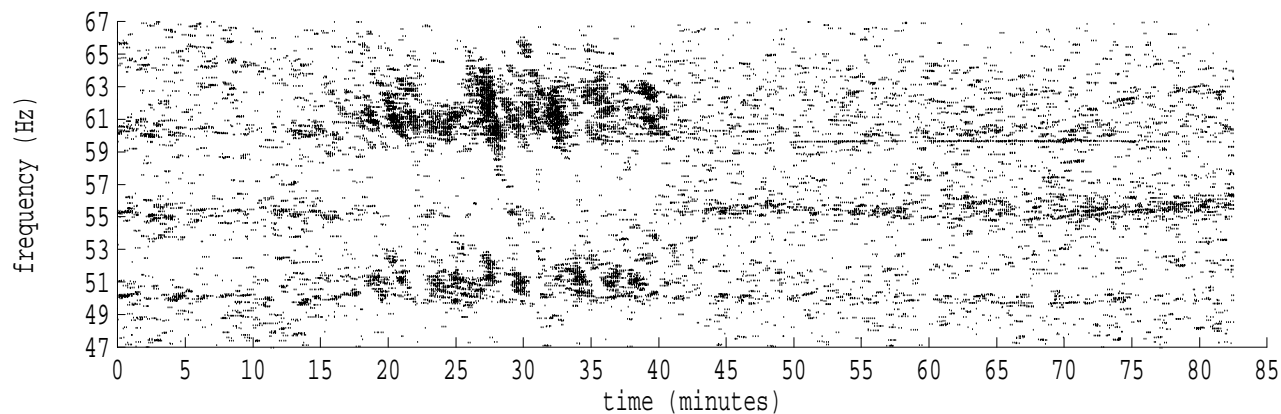
fft size: 16384  
overlap: 7/8  
sw\_hamm: 1  
sample rate: 228 Hz  
bin width: 0.0139 Hz  
int time: 71.86 sec  
bin freq: 56.889 Hz  
threshold: 2.50  
r\_max: 1696  
c rms: 949  
n (rms): 28  
offset: -8  
pkr median: 411  
ave median: 384  
nor median: 386  
sdv median: 103  
n median: 537  
peak snr: 12.8 dB  
c snr: 7.8 dB  
sw\_line: 1  
sw\_theta: 1  
freq: 56.8905 Hz  
ship spd: -2.878 m/s  
-5.596 knts

Heard Island - West Coast (U.S.) File: w0261516.sam Ch. 5 Julian:026:15:16:11



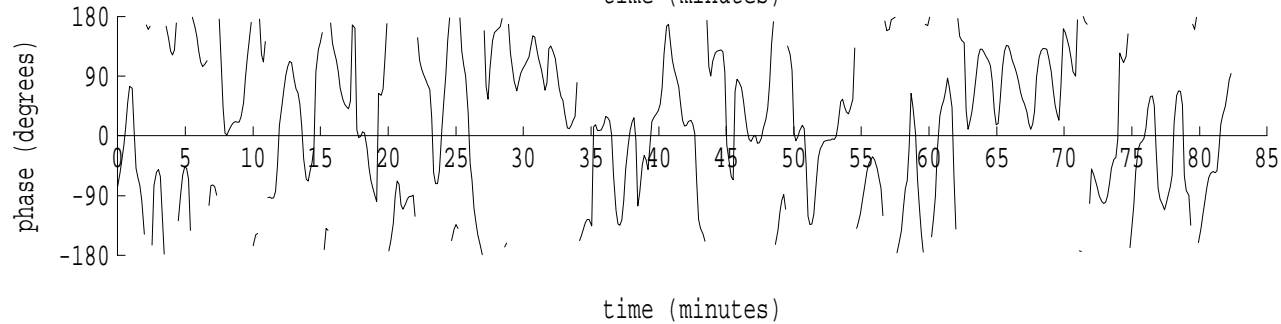
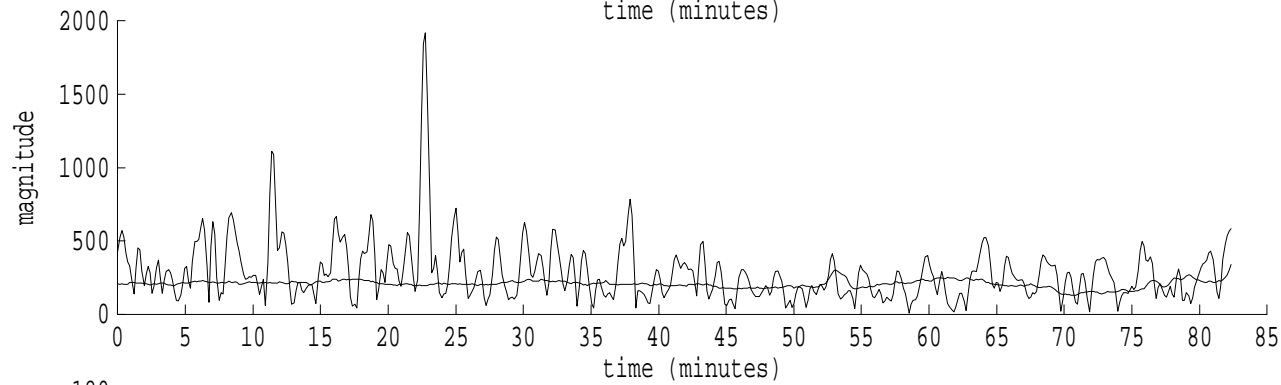
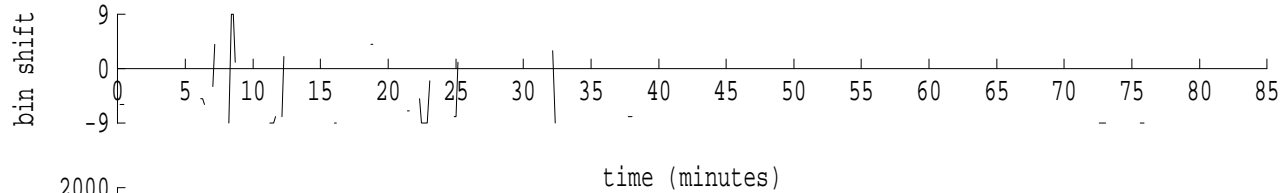
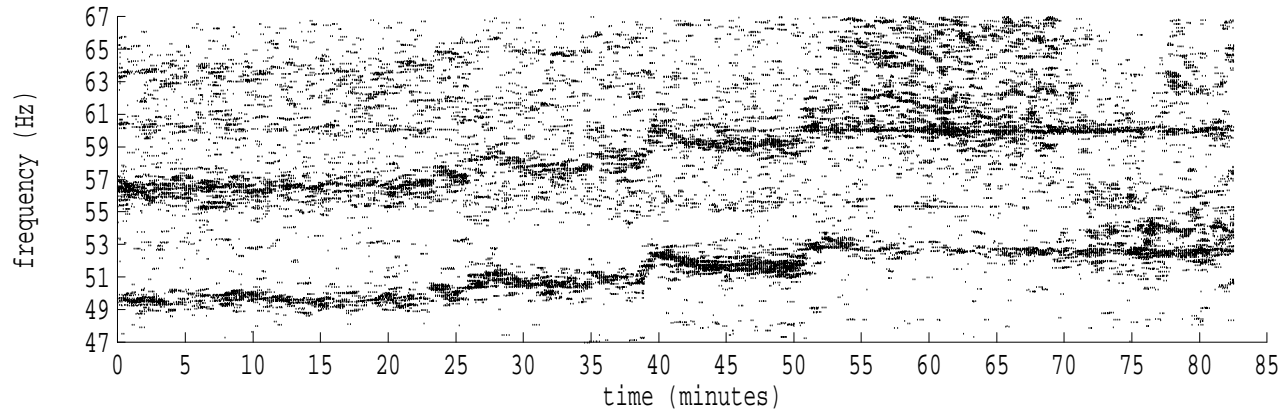
fft size: 16384  
overlap: 7/8  
sw\_hamm: 1  
sample rate: 228 Hz  
bin width: 0.0139 Hz  
int time: 71.86 sec  
bin freq: 56.972 Hz  
threshold: 2.50  
r\_max: 1581  
c rms: 840  
n (rms): 28  
offset: -2  
pkr median: 274  
ave median: 292  
nor median: 292  
sdv median: 69  
n median: 536  
peak snr: 14.7 dB  
c snr: 9.2 dB  
sw\_line: 1  
sw\_theta: 1  
freq: 56.9705 Hz  
ship spd: -0.774 m/s  
-1.505 knts

Heard Island - West Coast (U.S.) File: w0261516.sam Ch. 6 Julian:026:15:16:11



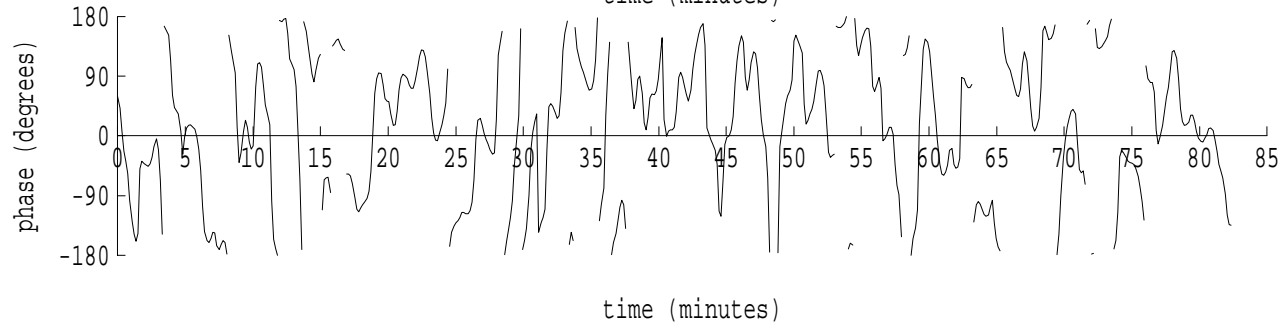
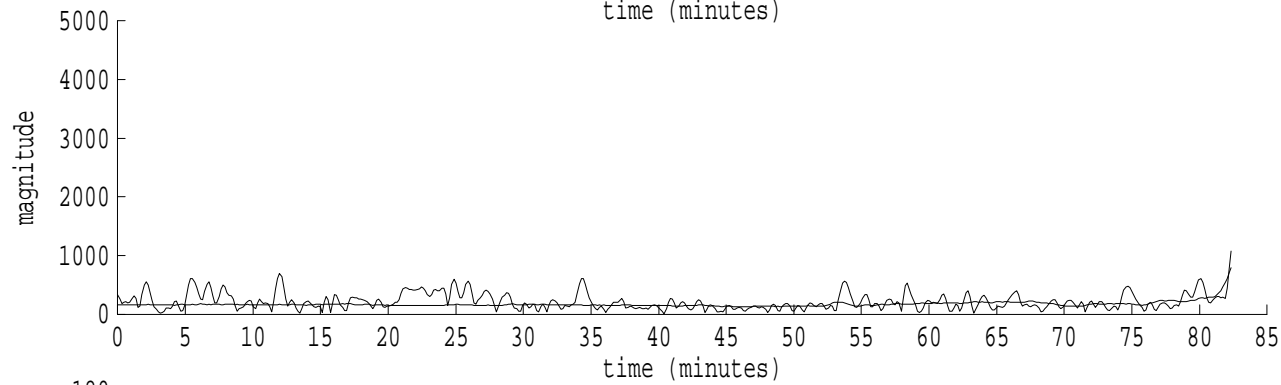
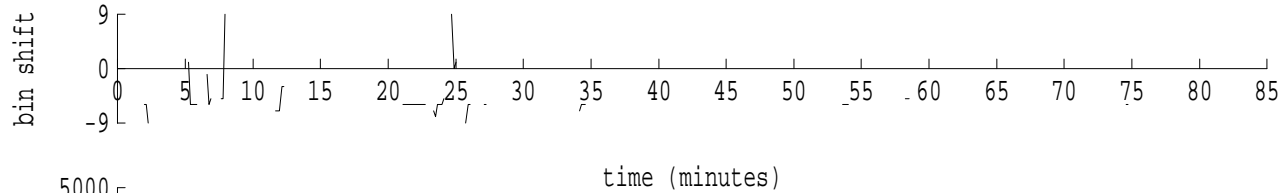
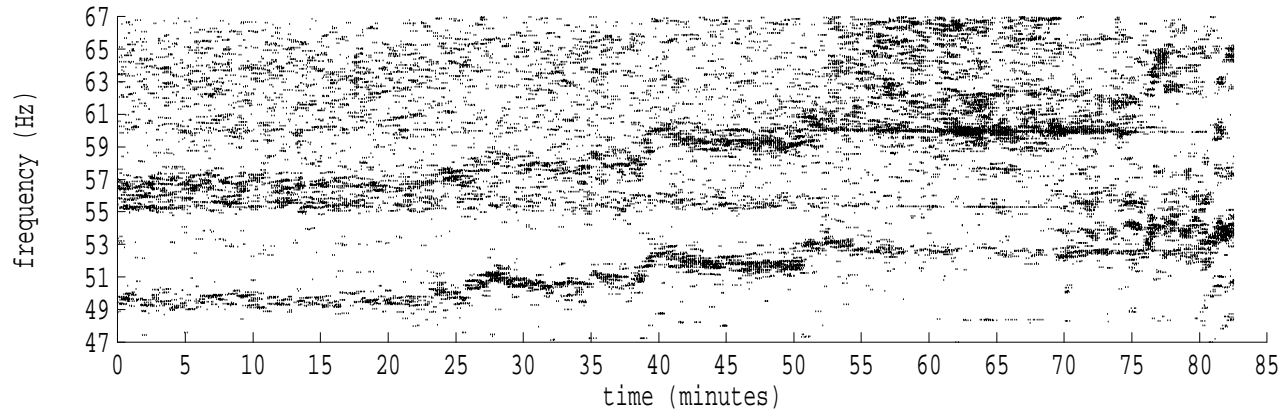
fft size: 16384  
overlap: 7/8  
sw\_hamm: 1  
sample rate: 228 Hz  
bin width: 0.0139 Hz  
int time: 71.86 sec  
bin freq: 57.111 Hz  
threshold: 2.50  
r\_max: 839  
c rms: 454  
n (rms): 18  
offset: 8  
pkr median: 237  
ave median: 179  
nor median: 179  
sdv median: 36  
n median: 546  
peak snr: 13.4 dB  
c snr: 8.1 dB  
sw\_line: 1  
sw\_theta: 1  
freq: 57.1129 Hz  
ship spd: 2.967 m/s  
5.769 knts

Heard Island - West Coast (U.S.) File: w0261516.sam Ch. 7 Julian:026:15:16:11



fft size: 16384  
overlap: 7/8  
sw\_hamm: 1  
sample rate: 228 Hz  
bin width: 0.0139 Hz  
int time: 71.86 sec  
bin freq: 56.875 Hz  
threshold: 2.50  
r\_max: 1919  
c rms: 776  
n (rms): 48  
offset: -9  
pkr median: 196  
ave median: 207  
nor median: 207  
sdv median: 26  
n median: 534  
peak snr: 19.3 dB  
c snr: 11.5 dB  
sw\_line: 1  
sw\_theta: 1  
freq: 56.8749 Hz  
ship spd: -3.287 m/s  
-6.392 knts

Heard Island - West Coast (U.S.) File: w0261516.sam Ch. 8 Julian:026:15:16:11



fft size: 16384  
overlap: 7/8  
sw\_hamm: 1  
sample rate: 228 Hz  
bin width: 0.0139 Hz  
int time: 71.86 sec  
bin freq: 56.917 Hz  
threshold: 2.50  
r\_max: 2271  
c rms: 496  
n (rms): 58  
offset: -6  
pkr median: 790  
ave median: 175  
nor median: 174  
sdv median: 55  
n median: 526  
peak snr: 22.3 dB  
c snr: 9.1 dB  
sw\_line: 1  
sw\_theta: 1  
freq: 56.9159 Hz  
ship spd: -2.210 m/s  
-4.297 knts