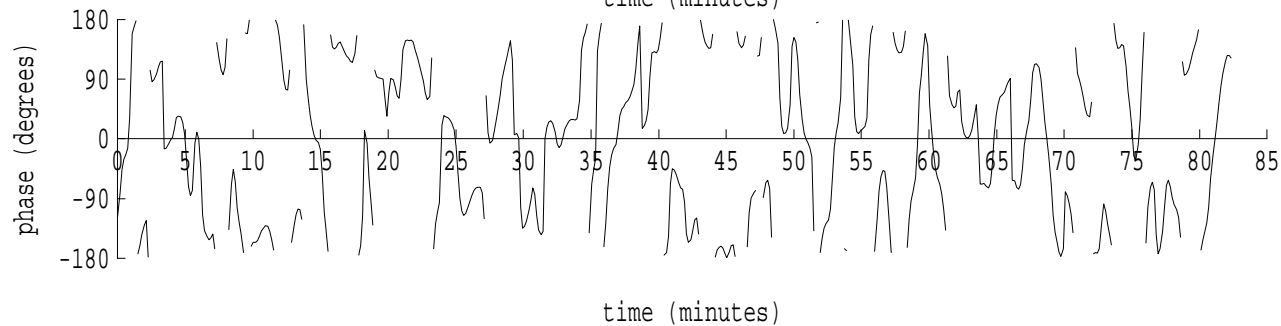
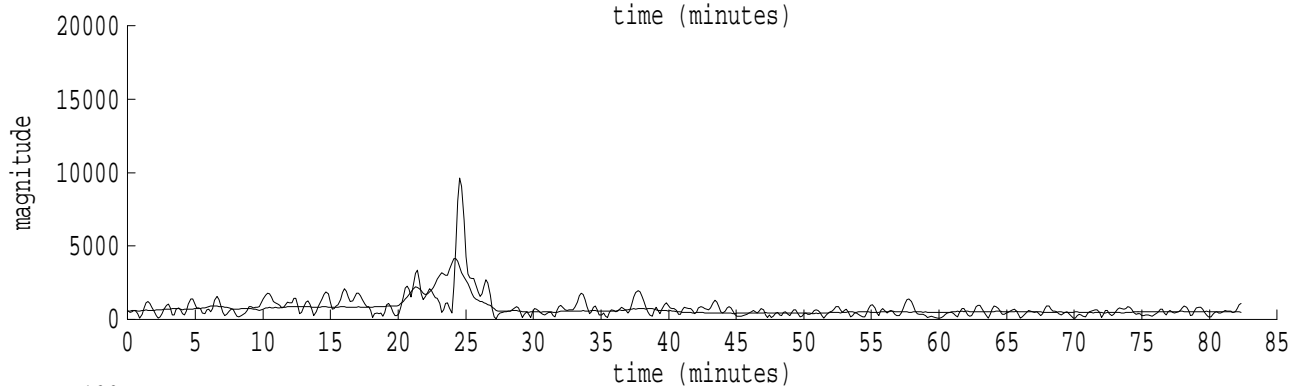
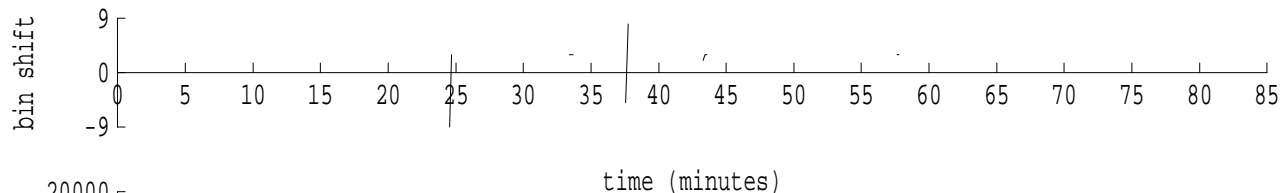
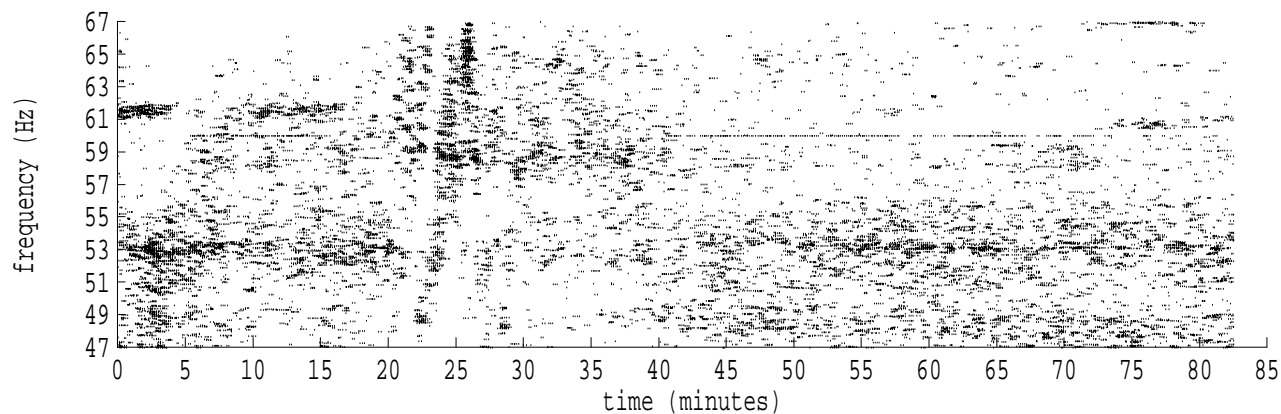
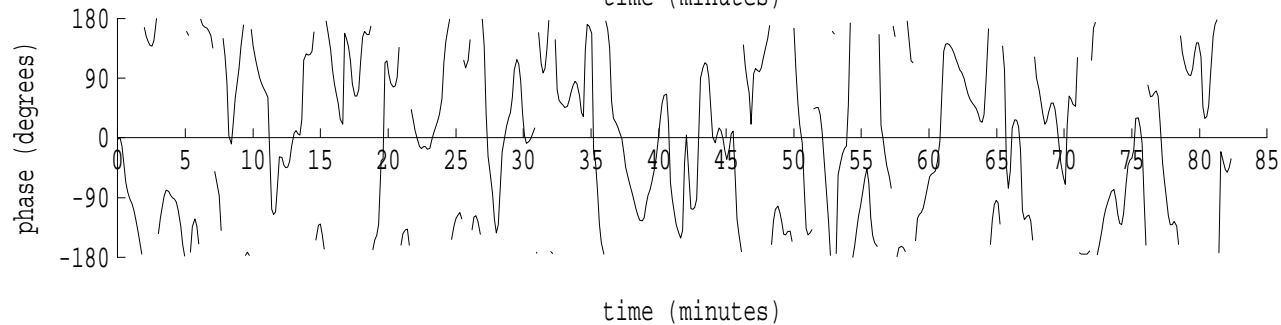
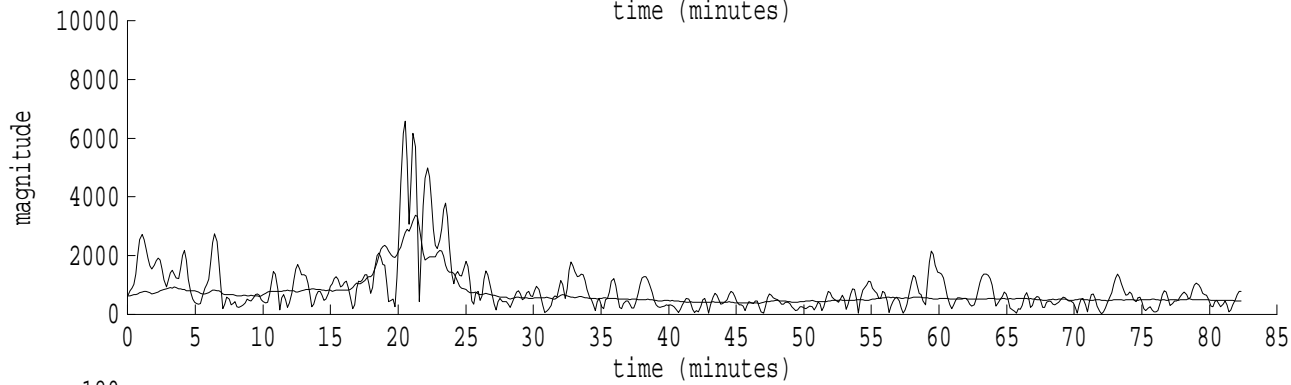
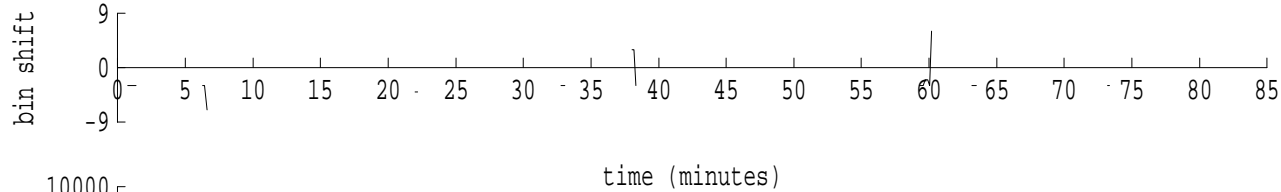
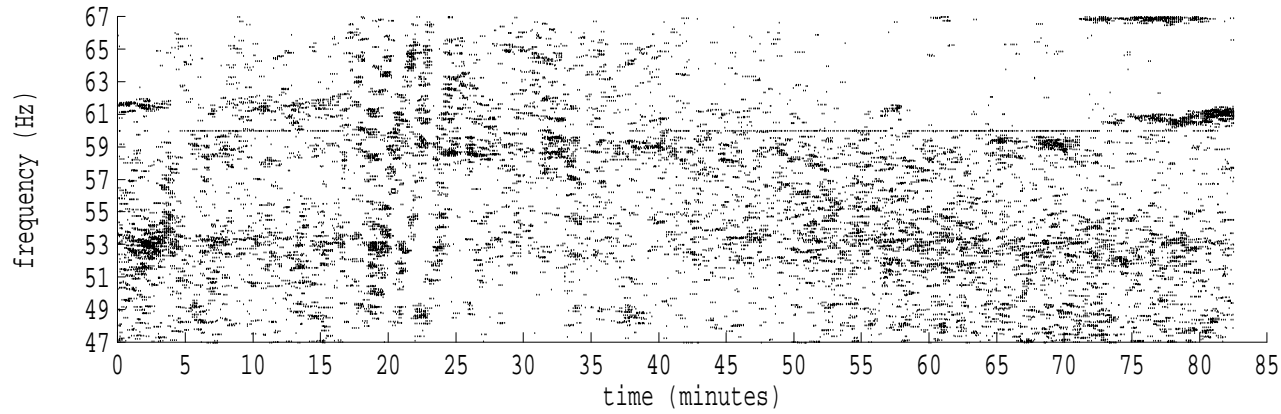


Heard Island - West Coast (U.S.) File: w0261216.sam Ch. 1 Julian:026:12:16:11



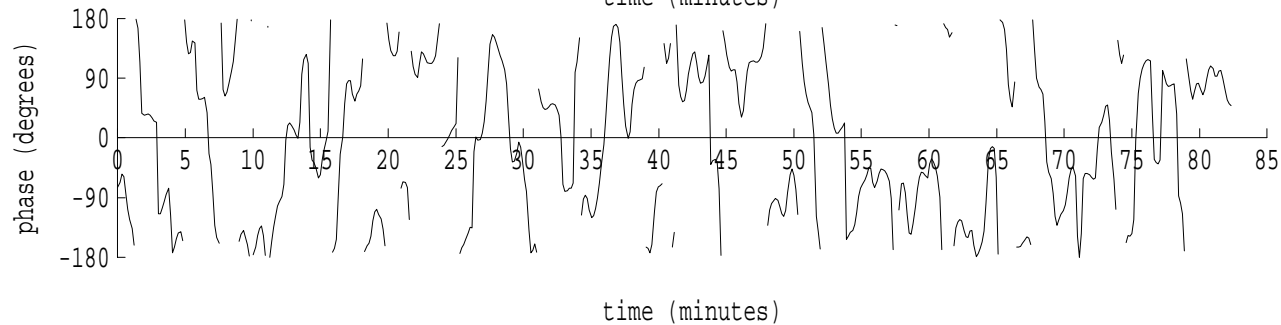
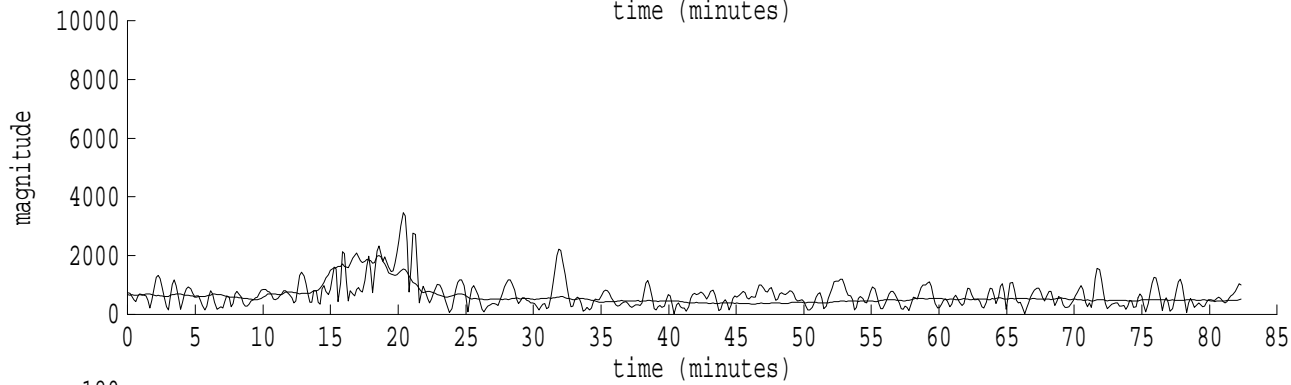
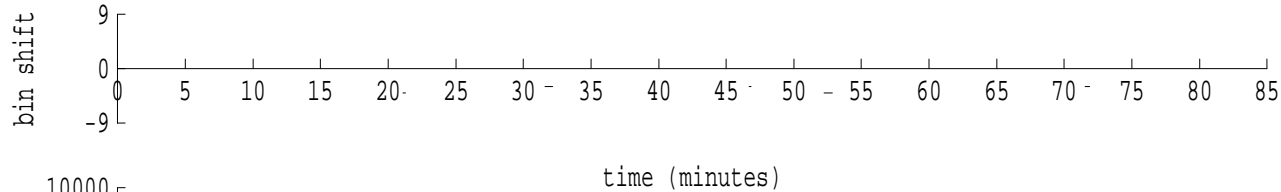
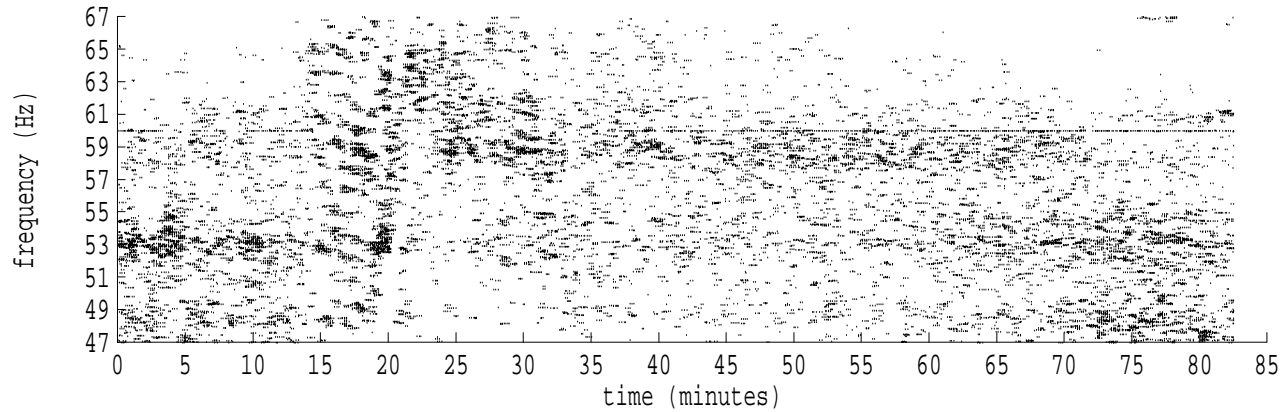
fft size: 16384  
overlap: 7/8  
sw\_hamm: 1  
sample rate: 228 Hz  
bin width: 0.0139 Hz  
int time: 71.86 sec  
bin freq: 57.042 Hz  
threshold: 2.50  
r\_max: 10437  
c rms: 4068  
n (rms): 12  
offset: 3  
pkr median: 3940  
ave median: 711  
nor median: 710  
sdv median: 533  
n median: 550  
peak snr: 23.3 dB  
c snr: 15.2 dB  
sw\_line: 1  
sw\_theta: 1  
freq: 57.0415 Hz  
ship spd: 1.091 m/s  
2.122 knts

Heard Island - West Coast (U.S.) File: w0261216.sam Ch. 2 Julian:026:12:16:11



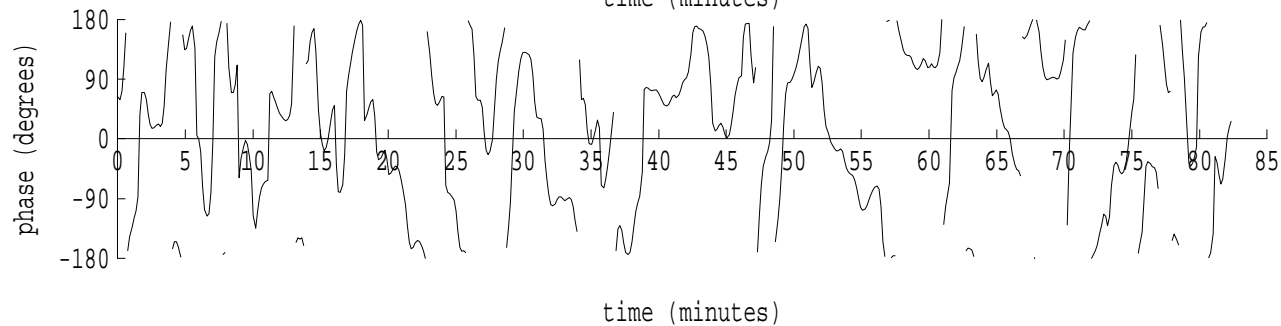
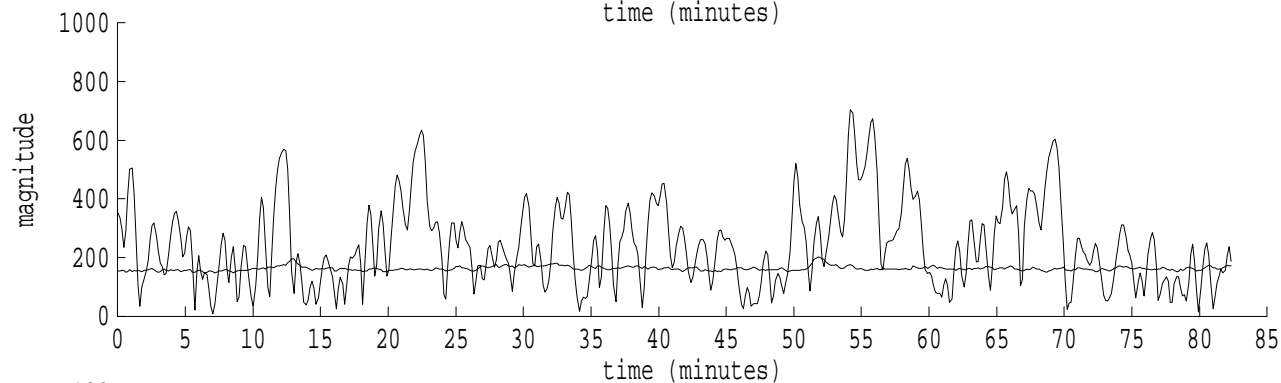
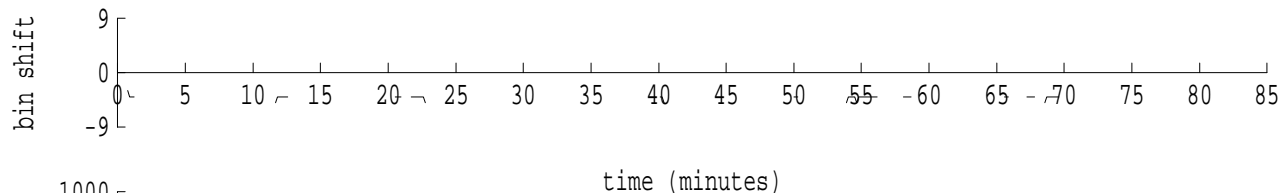
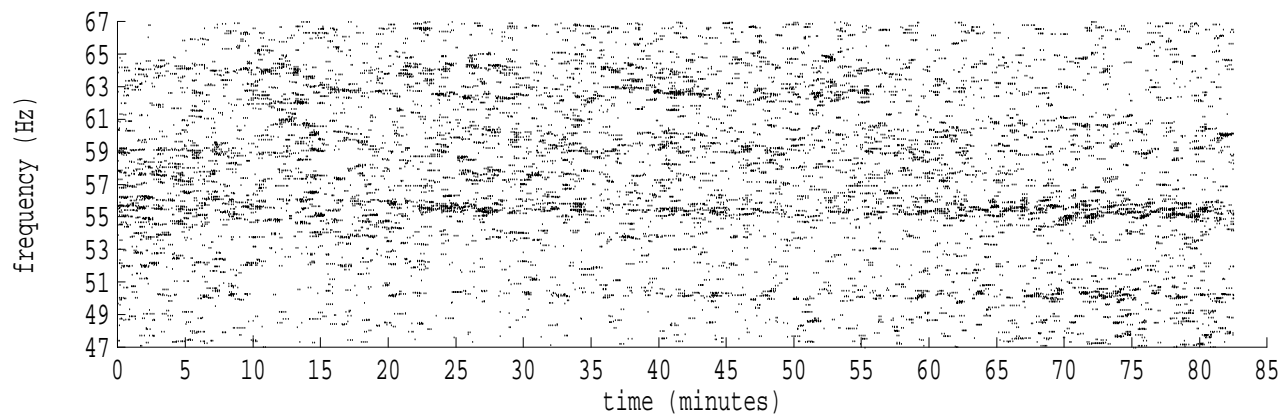
fft size: 16384  
overlap: 7/8  
sw\_hamm: 1  
sample rate: 228 Hz  
bin width: 0.0139 Hz  
int time: 71.86 sec  
bin freq: 56.958 Hz  
threshold: 2.50  
r\_max: 9545  
c rms: 2212  
n (rms): 30  
offset: -3  
pkr median: 2837  
ave median: 700  
nor median: 700  
sdv median: 471  
n median: 541  
peak snr: 22.7 dB  
c snr: 10.0 dB  
sw\_line: 1  
sw\_theta: 1  
freq: 56.9591 Hz  
ship spd: -1.075 m/s  
-2.091 knts

Heard Island - West Coast (U.S.) File: w0261216.sam Ch. 3 Julian:026:12:16:11



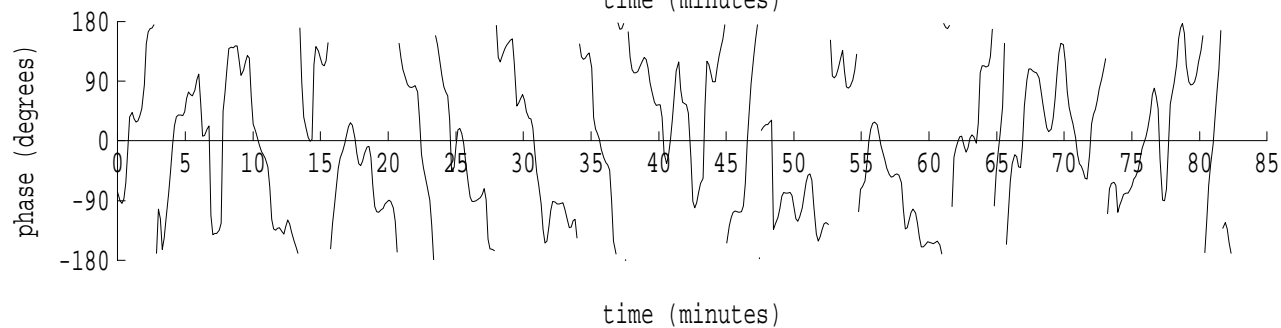
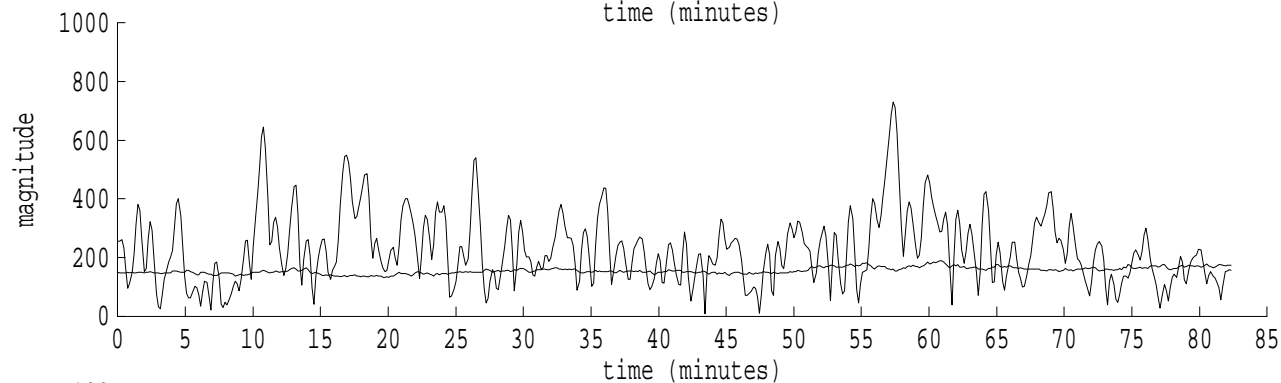
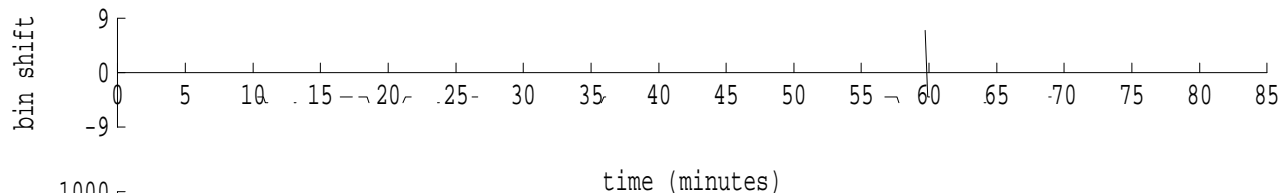
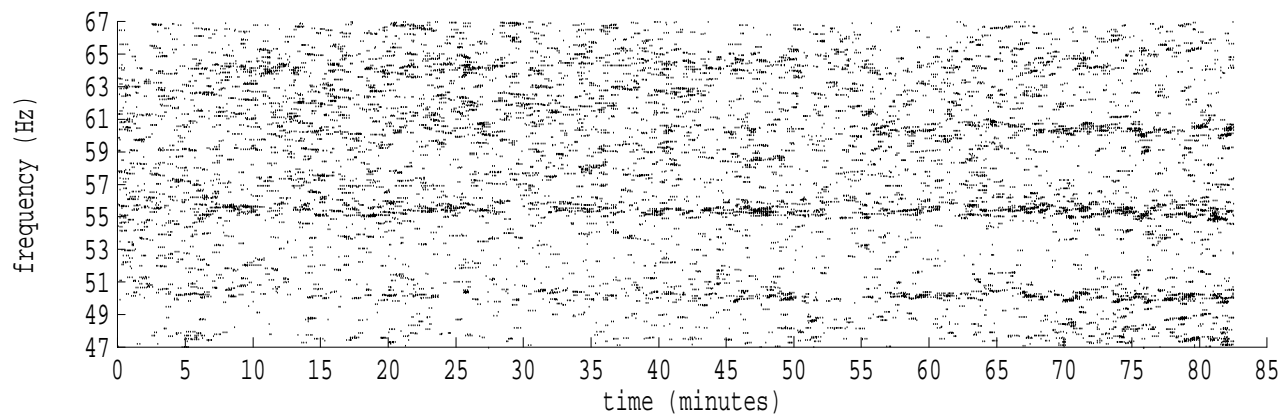
fft size: 16384  
overlap: 7/8  
sw\_hamm: 1  
sample rate: 228 Hz  
bin width: 0.0139 Hz  
int time: 71.86 sec  
bin freq: 56.958 Hz  
threshold: 2.50  
r\_max: 8047  
c rms: 1656  
n (rms): 19  
offset: -3  
pkr median: 1962  
ave median: 610  
nor median: 610  
sdv median: 326  
n median: 545  
peak snr: 22.4 dB  
c snr: 8.7 dB  
sw\_line: 1  
sw\_theta: 1  
freq: 56.9582 Hz  
ship spd: -1.099 m/s  
-2.137 knts

Heard Island - West Coast (U.S.) File: w0261216.sam Ch. 4 Julian:026:12:16:11



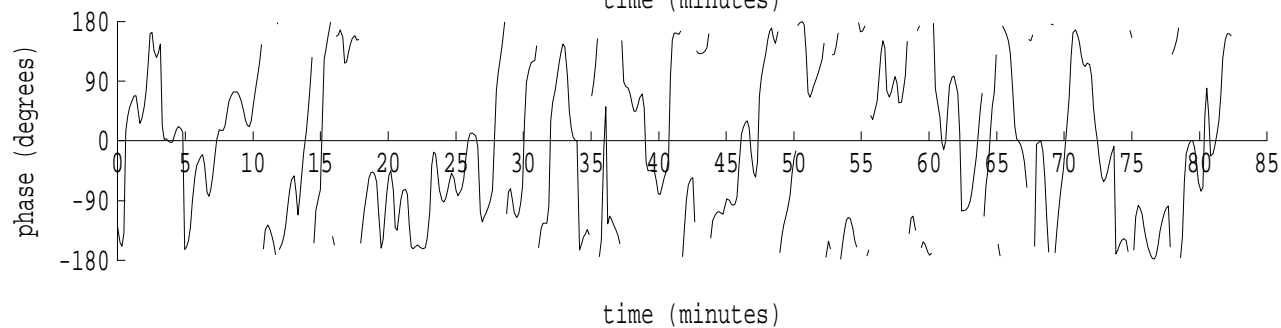
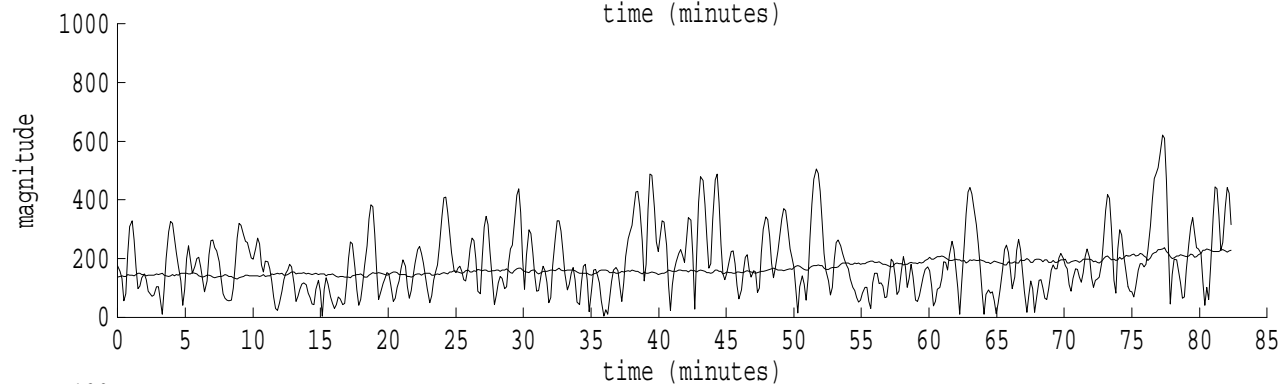
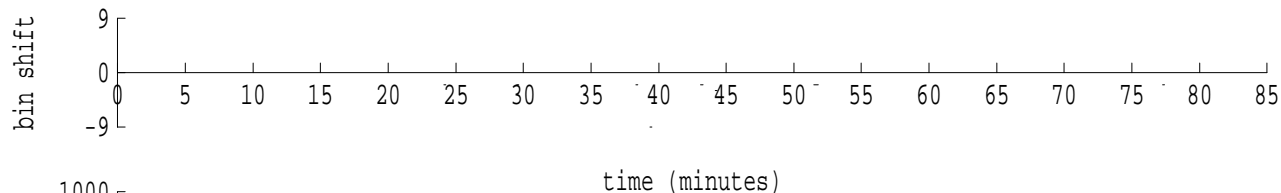
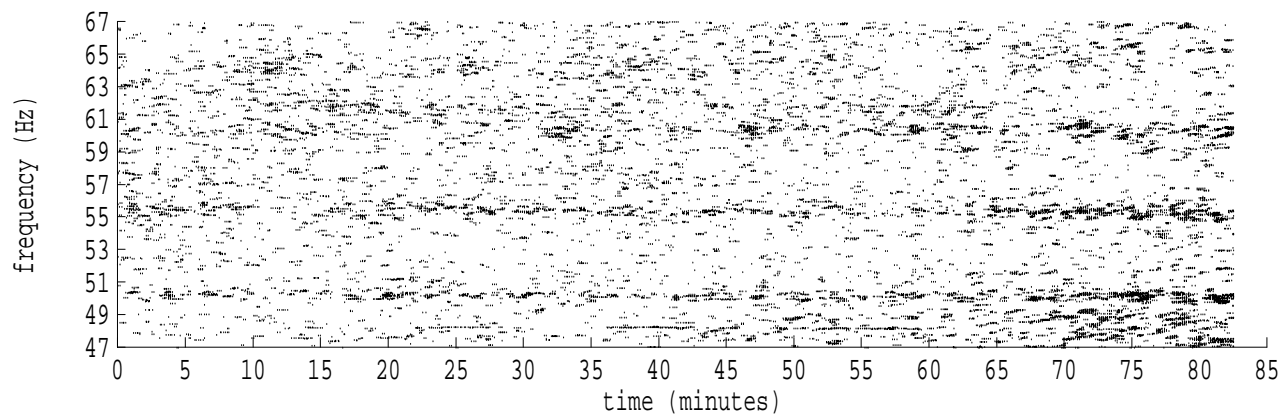
fft size: 16384  
overlap: 7/8  
sw\_hamm: 1  
sample rate: 228 Hz  
bin width: 0.0139 Hz  
int time: 71.86 sec  
bin freq: 56.944 Hz  
threshold: 2.50  
r\_max: 705  
c rms: 518  
n (rms): 68  
offset: -4  
pkr median: 177  
ave median: 163  
nor median: 162  
sdv median: 7  
n median: 513  
peak snr: 12.7 dB  
c snr: 10.1 dB  
sw\_line: 1  
sw\_theta: 1  
freq: 56.9422 Hz  
ship spd: -1.518 m/s  
-2.952 knts

Heard Island - West Coast (U.S.) File: w0261216.sam Ch. 5 Julian:026:12:16:11



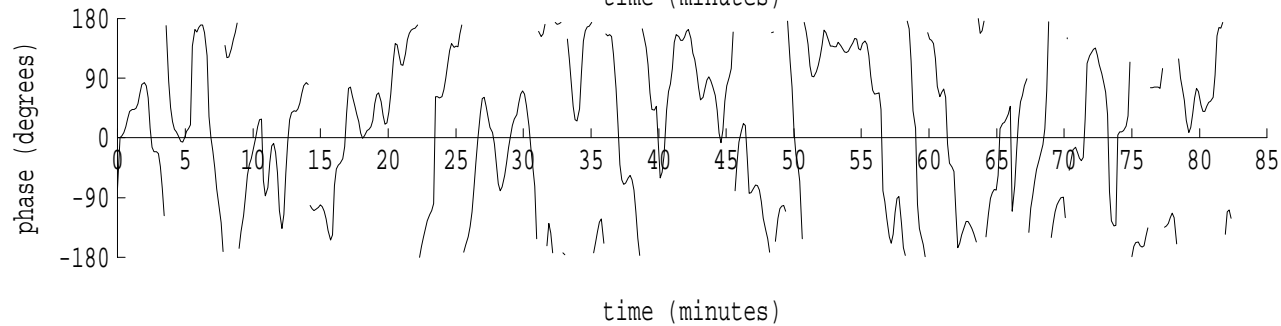
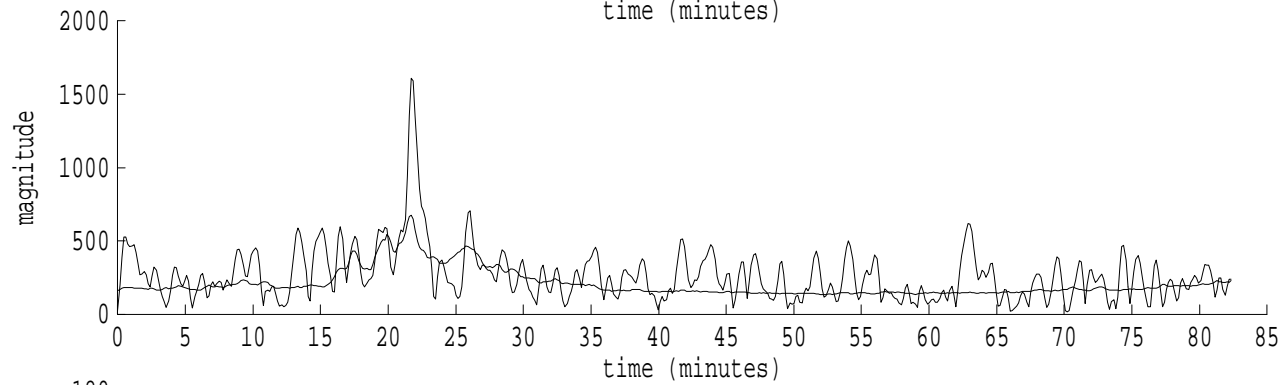
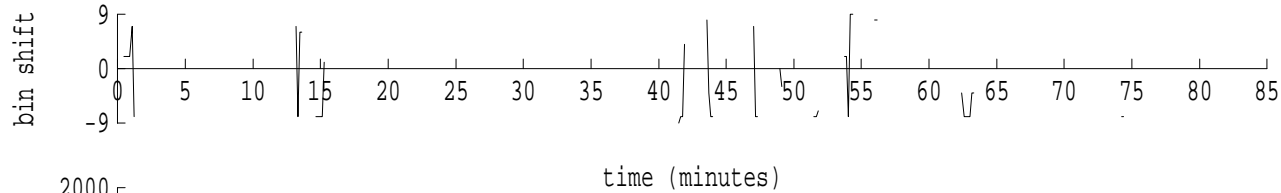
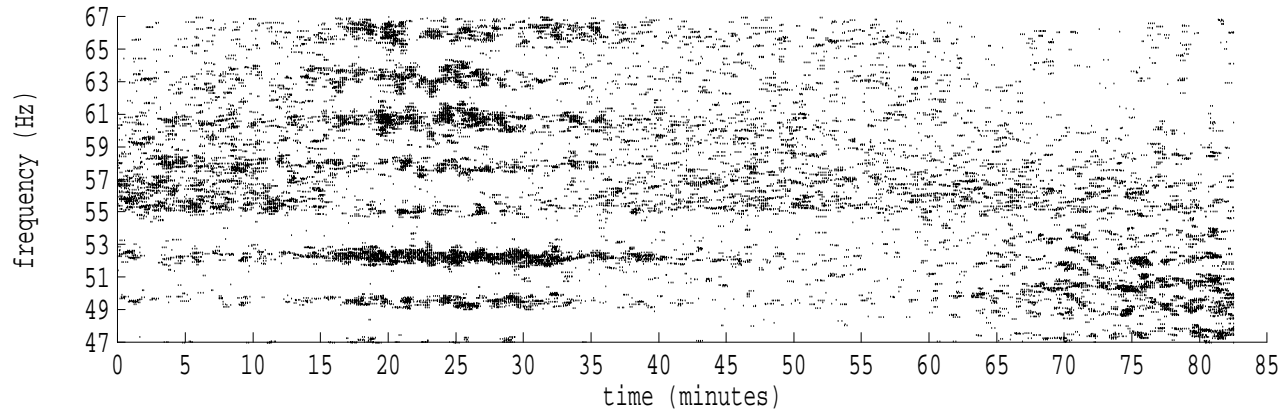
fft size: 16384  
overlap: 7/8  
sw\_hamm: 1  
sample rate: 228 Hz  
bin width: 0.0139 Hz  
int time: 71.86 sec  
bin freq: 56.944 Hz  
threshold: 2.50  
r\_max: 730  
c rms: 479  
n (rms): 53  
offset: -4  
pkr median: 160  
ave median: 156  
nor median: 156  
sdv median: 11  
n median: 528  
peak snr: 13.4 dB  
c snr: 9.7 dB  
sw\_line: 1  
sw\_theta: 1  
freq: 56.9427 Hz  
ship spd: -1.505 m/s  
-2.927 knts

Heard Island - West Coast (U.S.) File: w0261216.sam Ch. 6 Julian:026:12:16:11



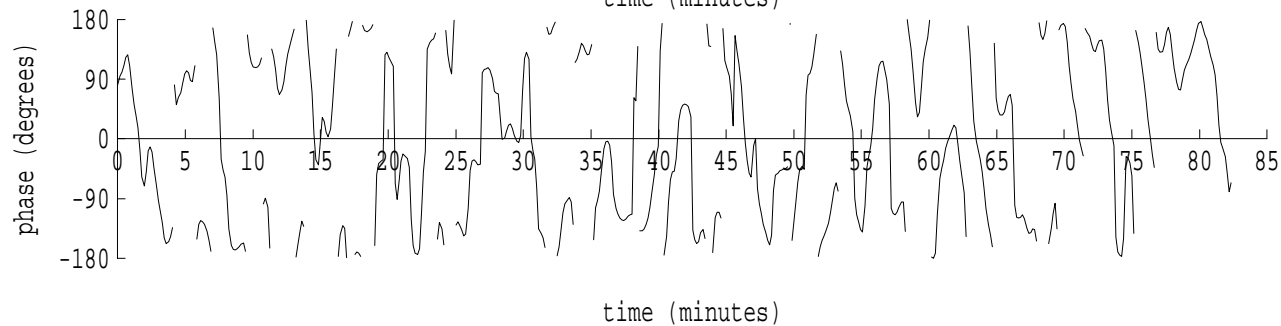
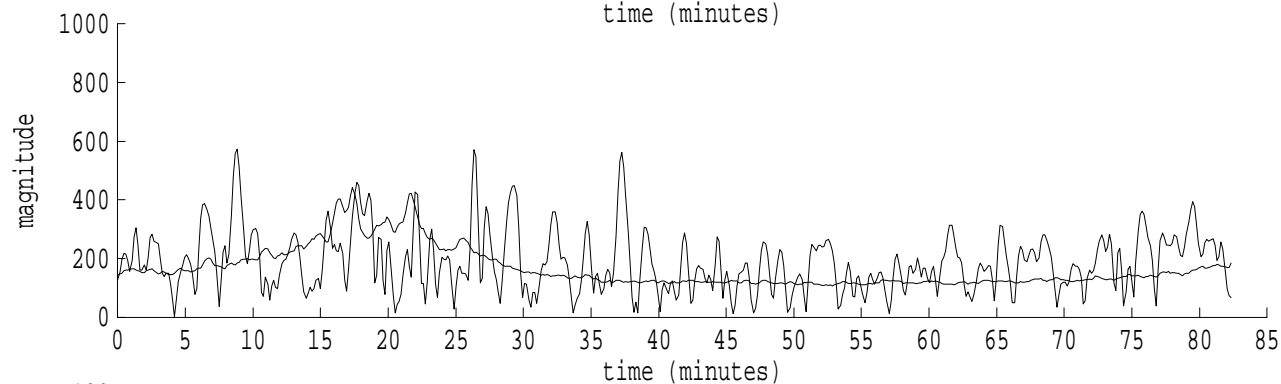
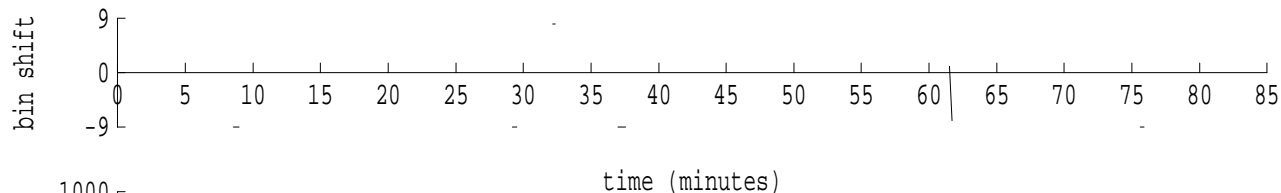
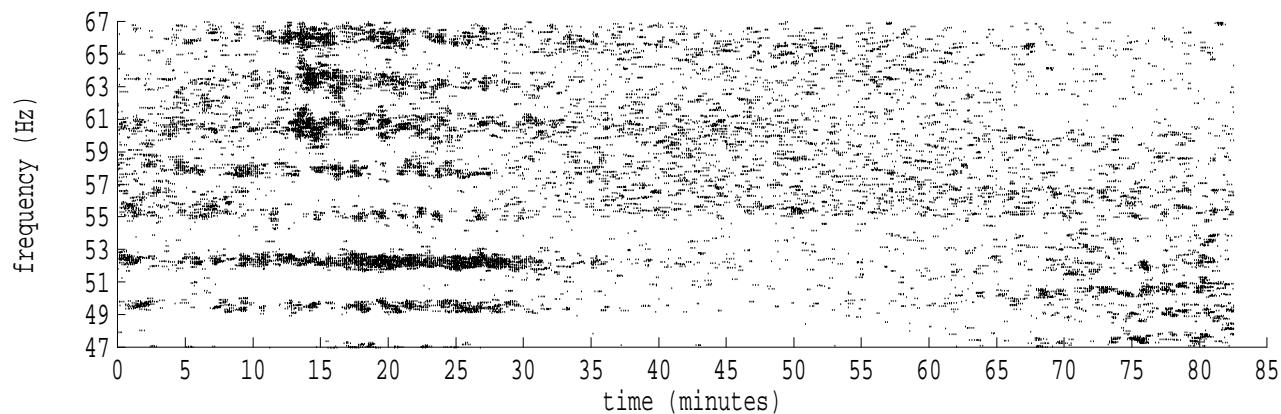
fft size: 16384  
overlap: 7/8  
sw\_hamm: 1  
sample rate: 228 Hz  
bin width: 0.0139 Hz  
int time: 71.86 sec  
bin freq: 56.972 Hz  
threshold: 2.50  
r\_max: 621  
c rms: 475  
n (rms): 18  
offset: -2  
pkr median: 234  
ave median: 168  
nor median: 168  
sdv median: 24  
n median: 547  
peak snr: 11.3 dB  
c snr: 9.0 dB  
sw\_line: 1  
sw\_theta: 1  
freq: 56.9702 Hz  
ship spd: -0.784 m/s  
-1.525 knts

Heard Island - West Coast (U.S.) File: w0261216.sam Ch. 7 Julian:026:12:16:11



fft size: 16384  
overlap: 7/8  
sw\_hamm: 1  
sample rate: 228 Hz  
bin width: 0.0139 Hz  
int time: 71.86 sec  
bin freq: 56.889 Hz  
threshold: 2.50  
r\_max: 1610  
c rms: 477  
n (rms): 47  
offset: -8  
pkr median: 677  
ave median: 209  
nor median: 211  
sdv median: 96  
n median: 534  
peak snr: 17.6 dB  
c snr: 7.1 dB  
sw\_line: 1  
sw\_theta: 1  
freq: 56.8881 Hz  
ship spd: -2.940 m/s  
-5.716 knts

Heard Island - West Coast (U.S.) File: w0261216.sam Ch. 8 Julian:026:12:16:11



fft size: 16384  
overlap: 7/8  
sw\_hamm: 1  
sample rate: 228 Hz  
bin width: 0.0139 Hz  
int time: 71.86 sec  
bin freq: 56.875 Hz  
threshold: 2.50  
r\_max: 795  
c rms: 440  
n (rms): 22  
offset: -9  
pkr median: 334  
ave median: 166  
nor median: 166  
sdv median: 67  
n median: 544  
peak snr: 13.6 dB  
c snr: 8.4 dB  
sw\_line: 1  
sw\_theta: 1  
freq: 56.8748 Hz  
ship spd: -3.289 m/s  
-6.396 knts