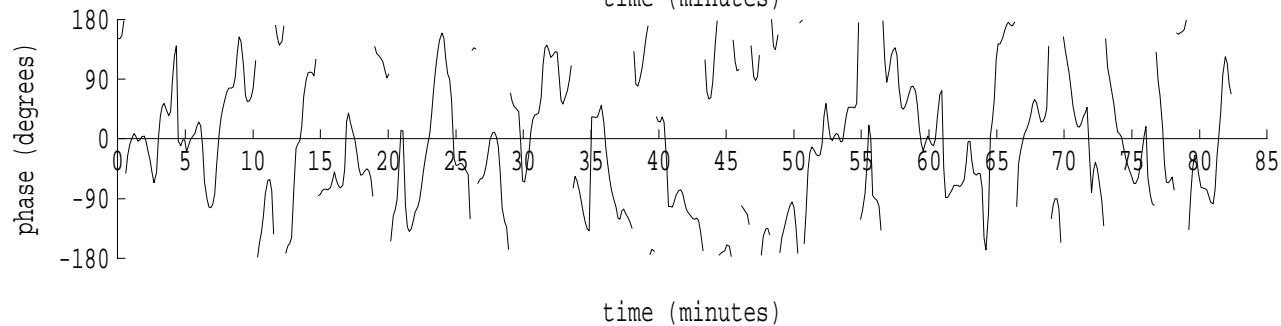
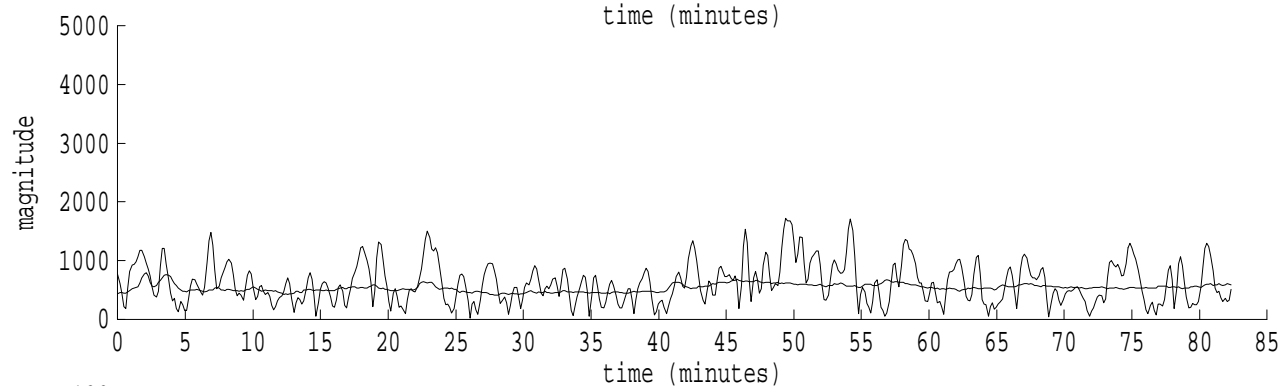
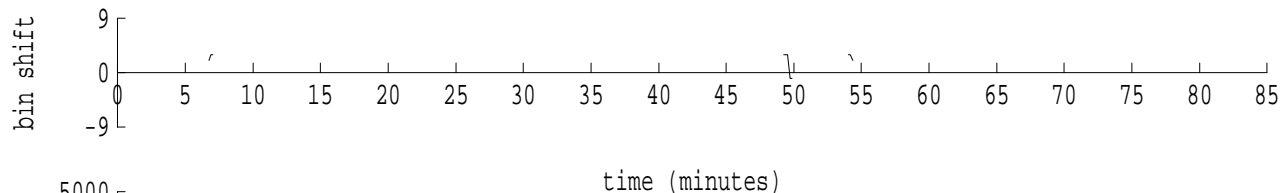
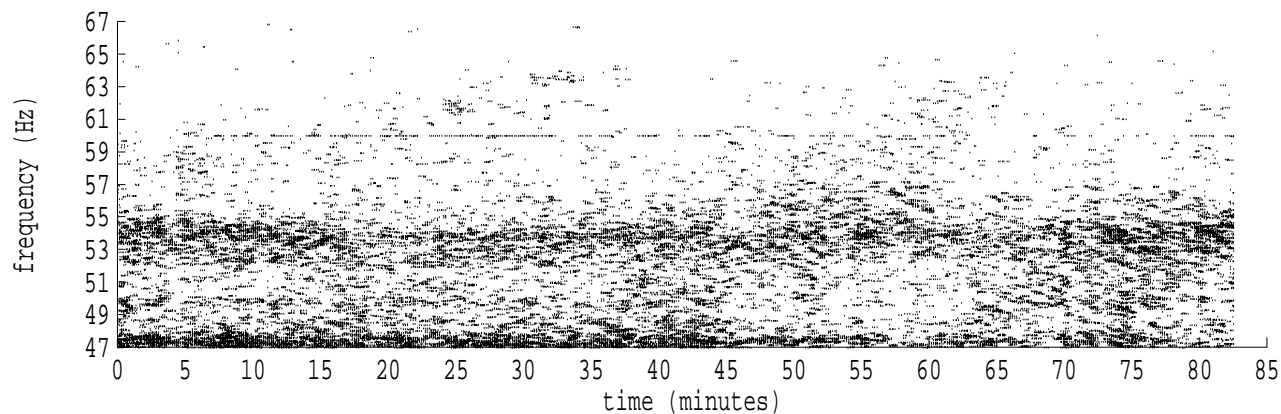
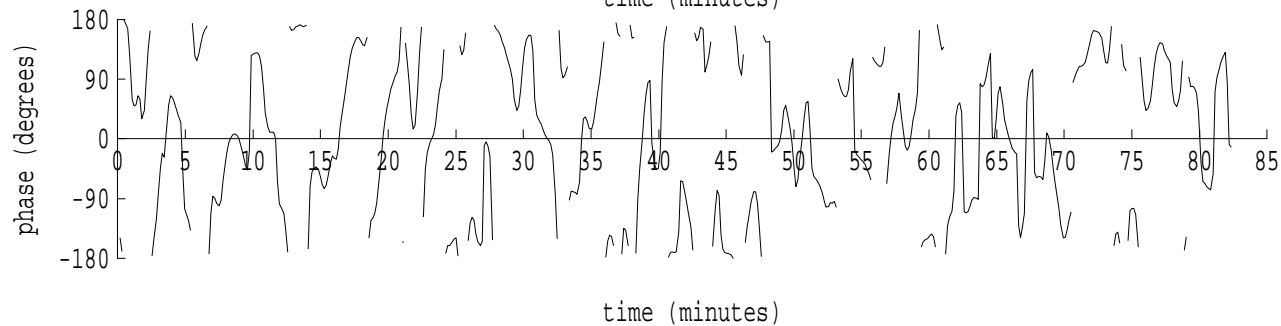
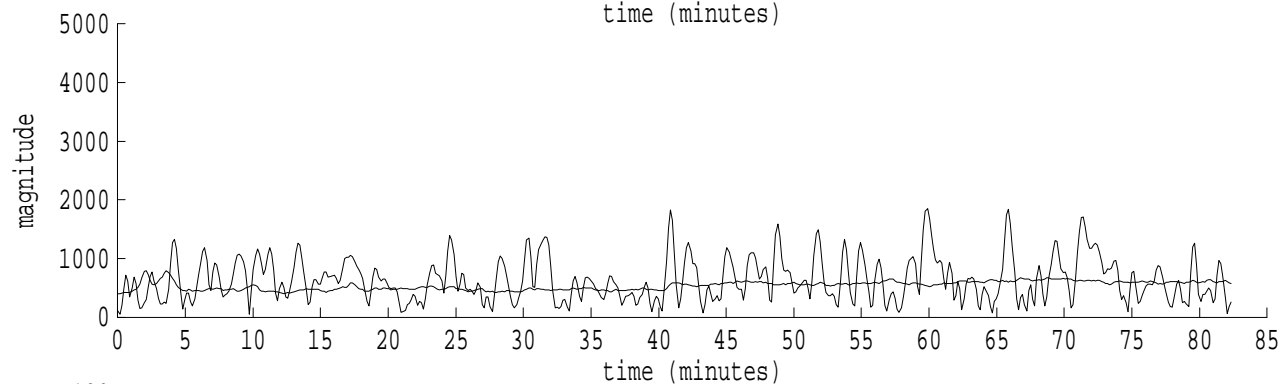
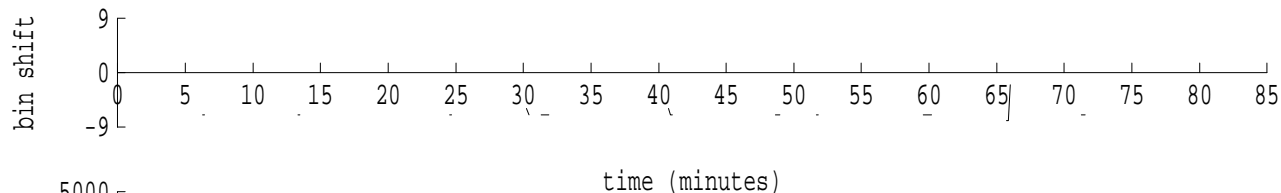
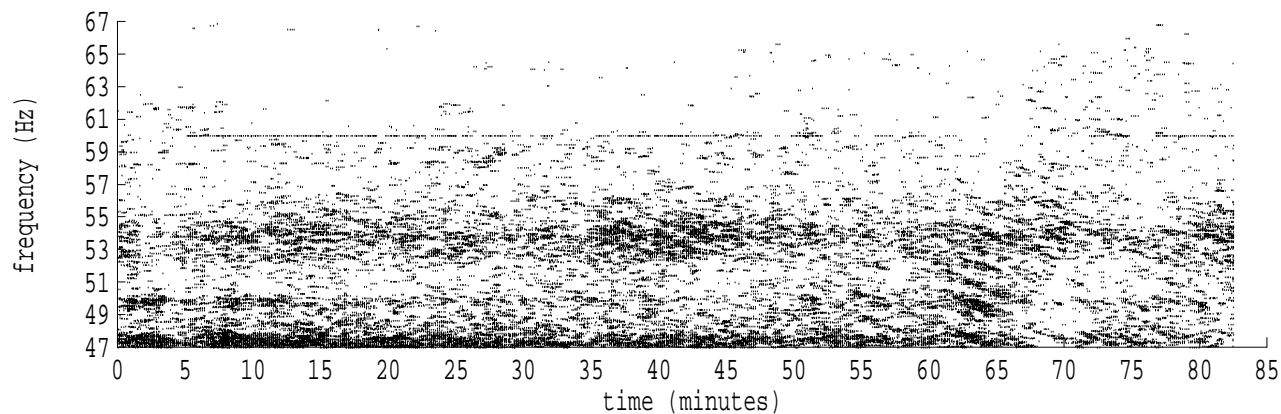


Heard Island - West Coast (U.S.) File: w0260916.sam Ch. 1 Julian:026:09:16:11



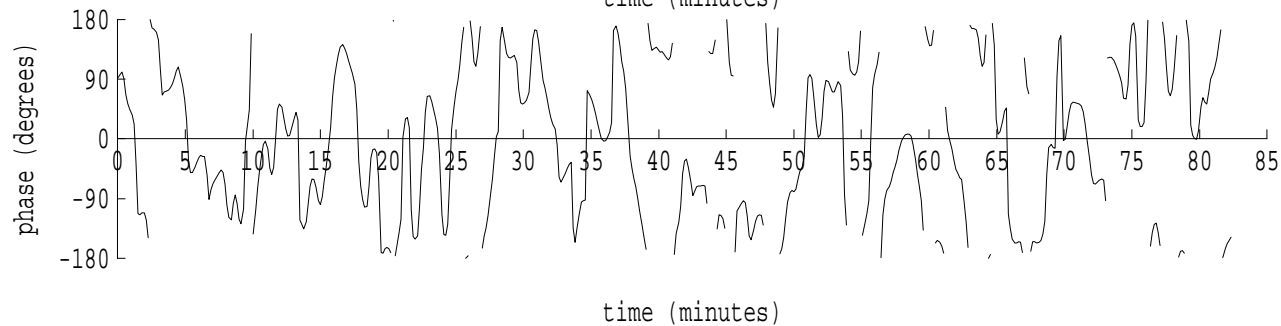
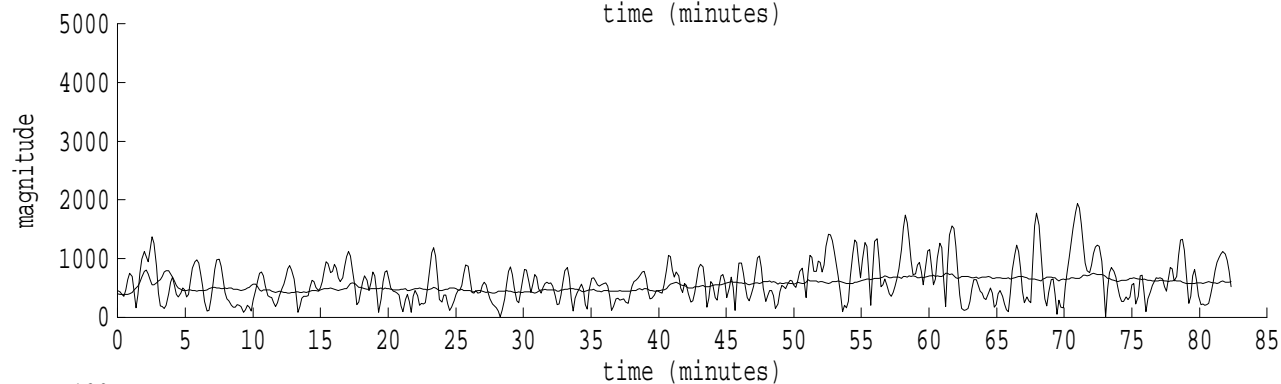
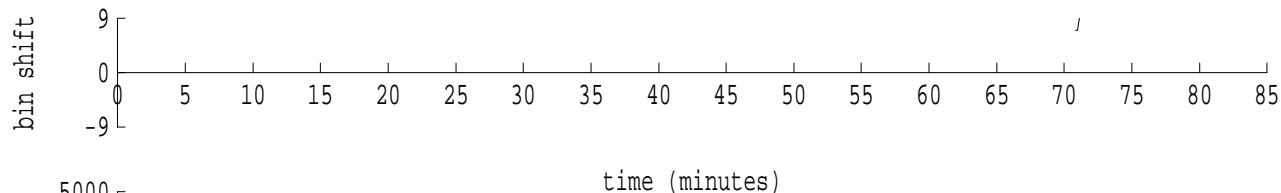
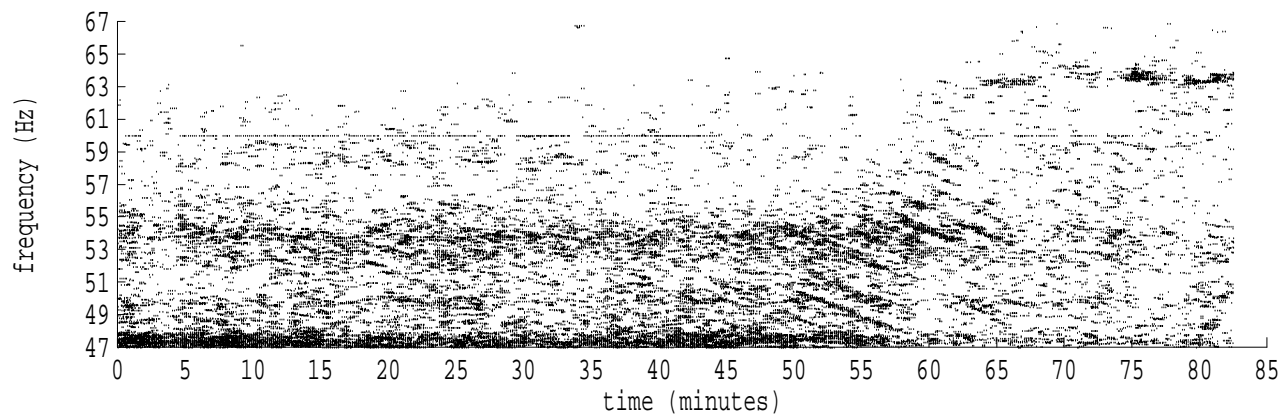
fft size: 16384  
overlap: 7/8  
sw\_hamm: 1  
sample rate: 228 Hz  
bin width: 0.0139 Hz  
int time: 71.86 sec  
bin freq: 57.042 Hz  
threshold: 2.50  
r\_max: 2666  
c rms: 1542  
n (rms): 12  
offset: 3  
pkr median: 573  
ave median: 537  
nor median: 536  
sdv median: 65  
n median: 550  
peak snr: 13.9 dB  
c snr: 9.2 dB  
sw\_line: 1  
sw\_theta: 1  
freq: 57.0405 Hz  
ship spd: 1.066 m/s  
2.072 knts

Heard Island - West Coast (U.S.) File: w0260916.sam Ch. 2 Julian:026:09:16:11



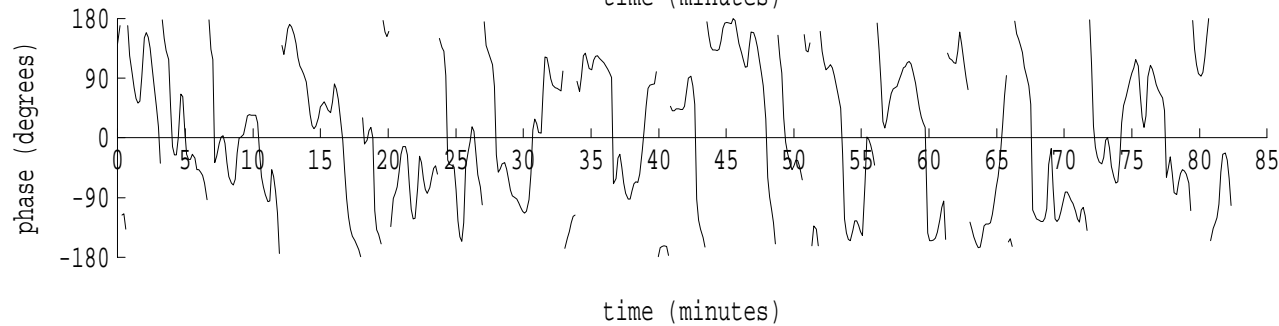
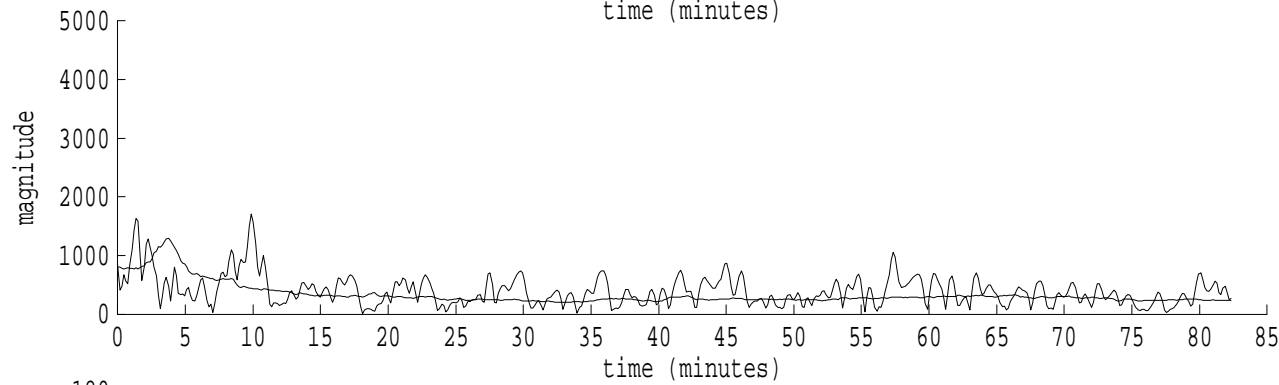
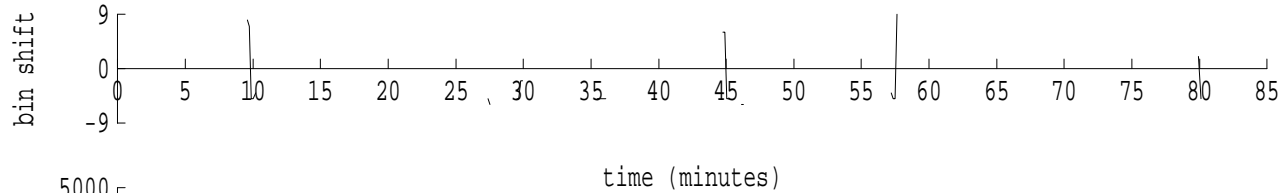
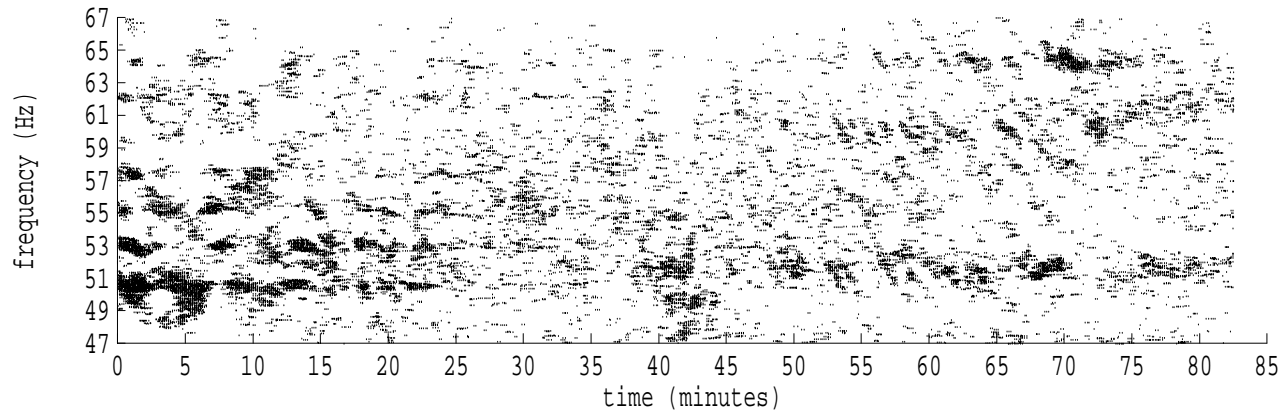
fft size: 16384  
overlap: 7/8  
sw\_hamm: 1  
sample rate: 228 Hz  
bin width: 0.0139 Hz  
int time: 71.86 sec  
bin freq: 56.903 Hz  
threshold: 2.50  
r\_max: 2235  
c rms: 1486  
n (rms): 33  
offset: -7  
pkr median: 557  
ave median: 541  
nor median: 540  
sdv median: 73  
n median: 546  
peak snr: 12.3 dB  
c snr: 8.8 dB  
sw\_line: 1  
sw\_theta: 1  
freq: 56.9022 Hz  
ship spd: -2.570 m/s  
-4.997 knts

Heard Island - West Coast (U.S.) File: w0260916.sam Ch. 3 Julian:026:09:16:11



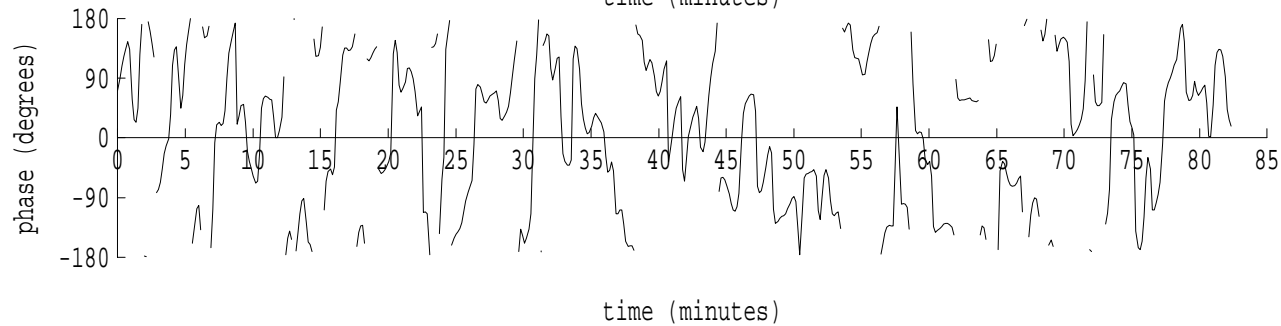
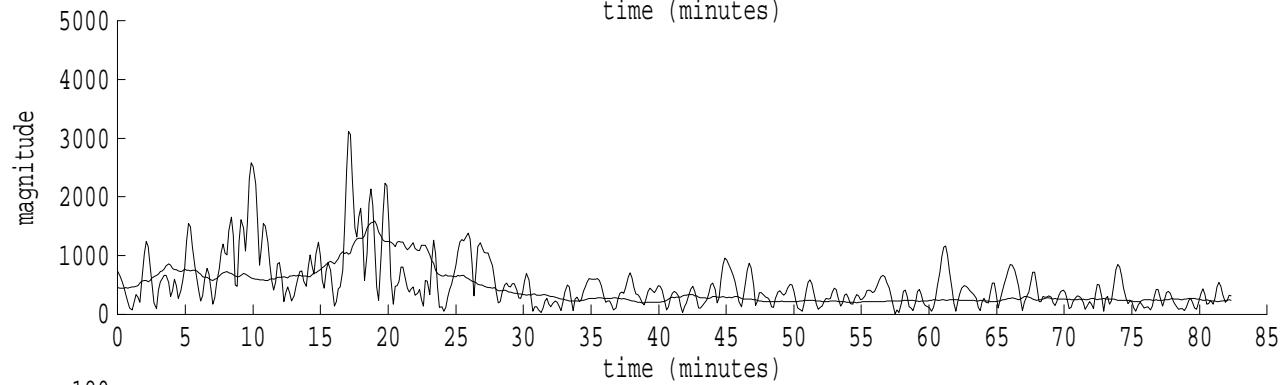
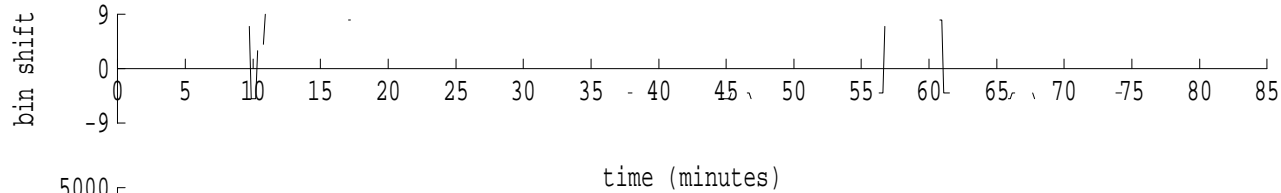
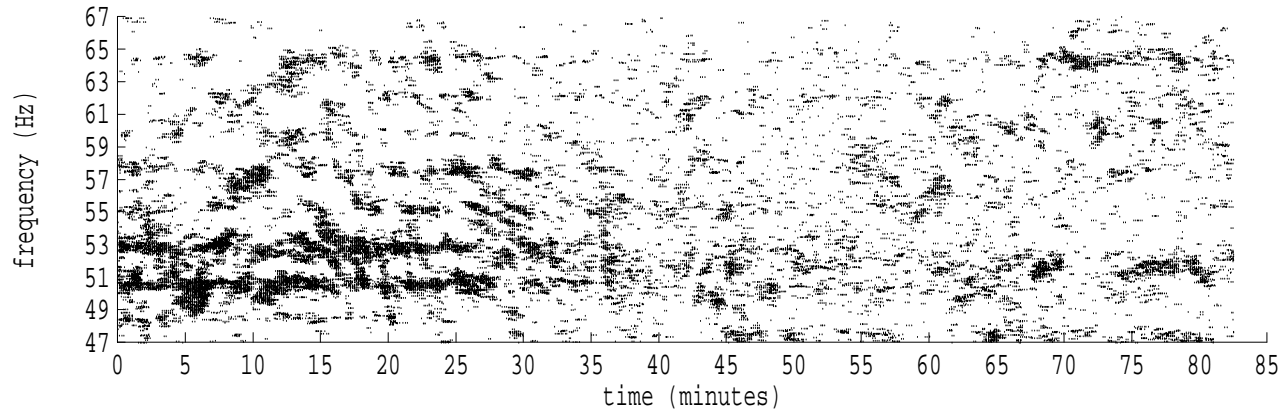
fft size: 16384  
overlap: 7/8  
sw\_hamm: 1  
sample rate: 228 Hz  
bin width: 0.0139 Hz  
int time: 71.86 sec  
bin freq: 57.097 Hz  
threshold: 2.50  
r\_max: 2404  
c rms: 1823  
n (rms): 5  
offset: 7  
pkr median: 668  
ave median: 557  
nor median: 556  
sdv median: 97  
n median: 551  
peak snr: 12.7 dB  
c snr: 10.3 dB  
sw\_line: 1  
sw\_theta: 1  
freq: 57.0974 Hz  
ship spd: 2.560 m/s  
4.978 knts

Heard Island - West Coast (U.S.) File: w0260916.sam Ch. 4 Julian:026:09:16:11



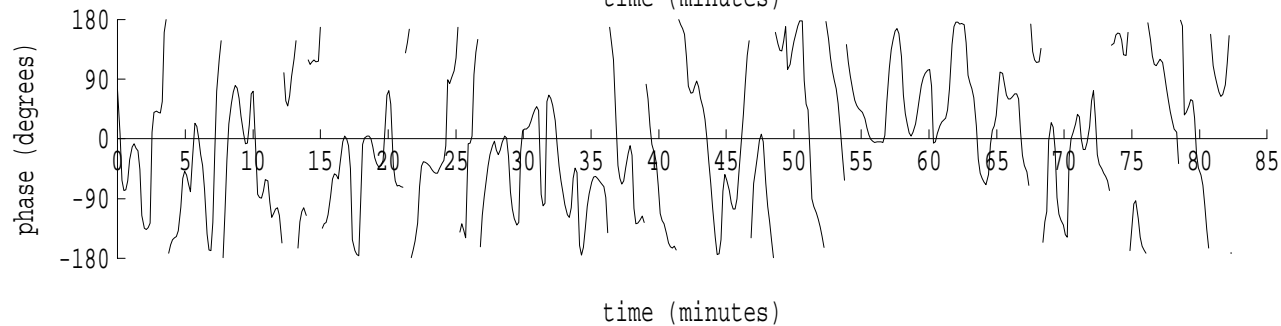
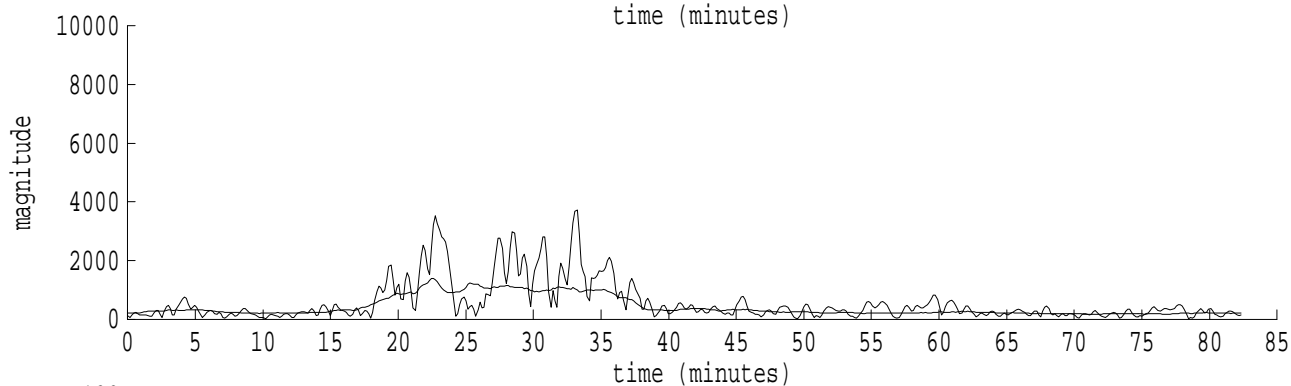
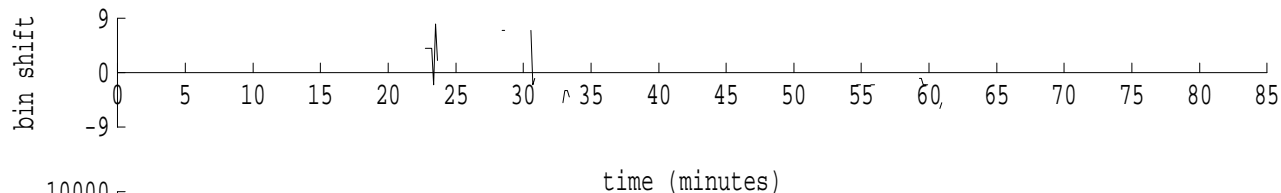
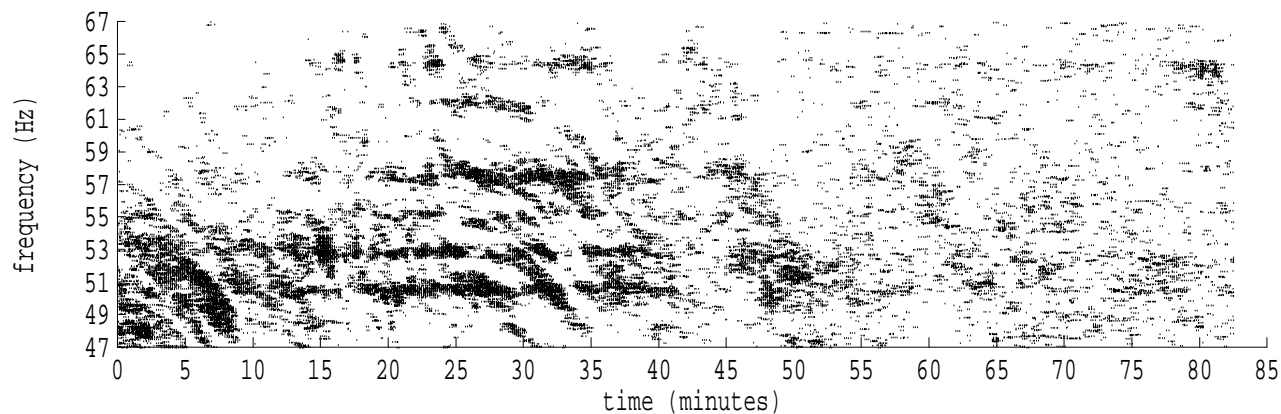
fft size: 16384  
overlap: 7/8  
sw\_hamm: 1  
sample rate: 228 Hz  
bin width: 0.0139 Hz  
int time: 71.86 sec  
bin freq: 56.930 Hz  
threshold: 2.50  
r\_max: 3574  
c rms: 908  
n (rms): 30  
offset: -5  
pkr median: 794  
ave median: 337  
nor median: 337  
sdv median: 187  
n median: 541  
peak snr: 20.5 dB  
c snr: 8.6 dB  
sw\_line: 1  
sw\_theta: 1  
freq: 56.9323 Hz  
ship spd: -1.779 m/s  
-3.460 knts

Heard Island - West Coast (U.S.) File: w0260916.sam Ch. 5 Julian:026:09:16:11



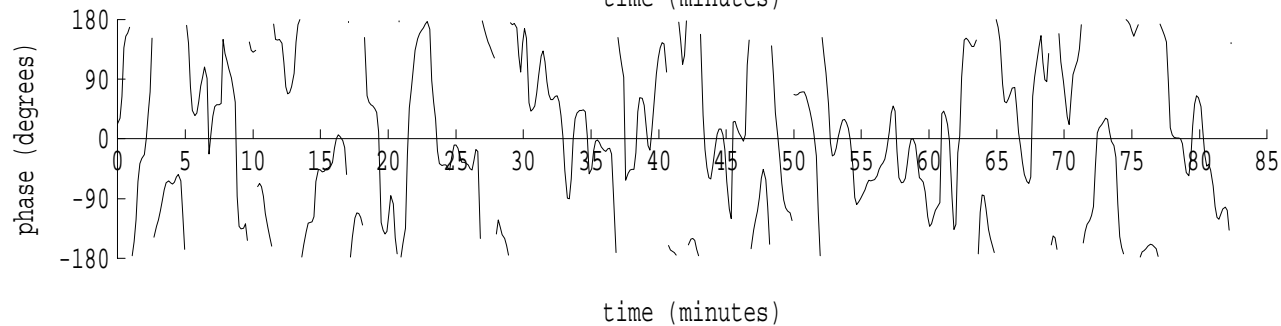
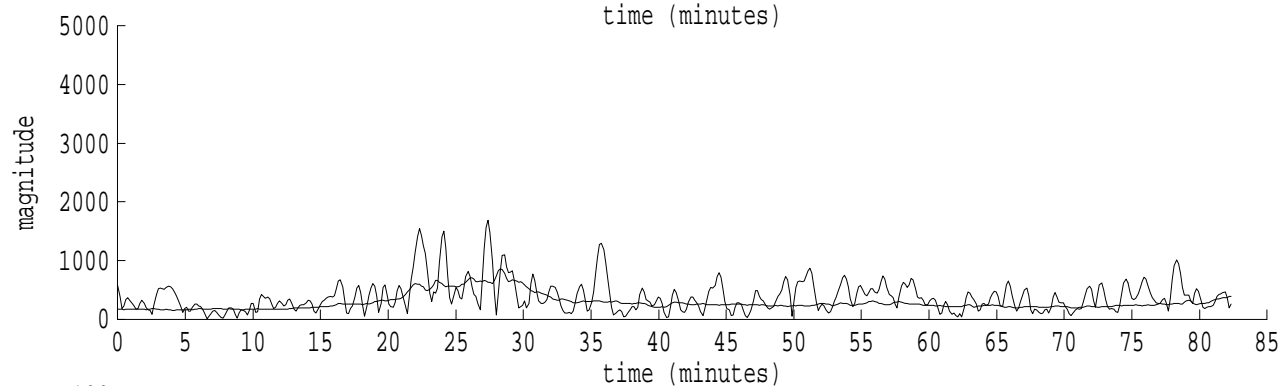
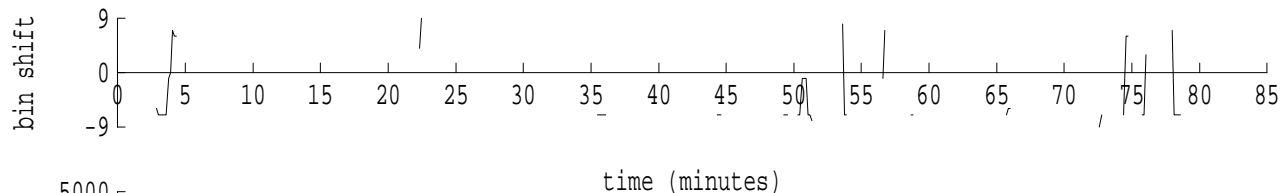
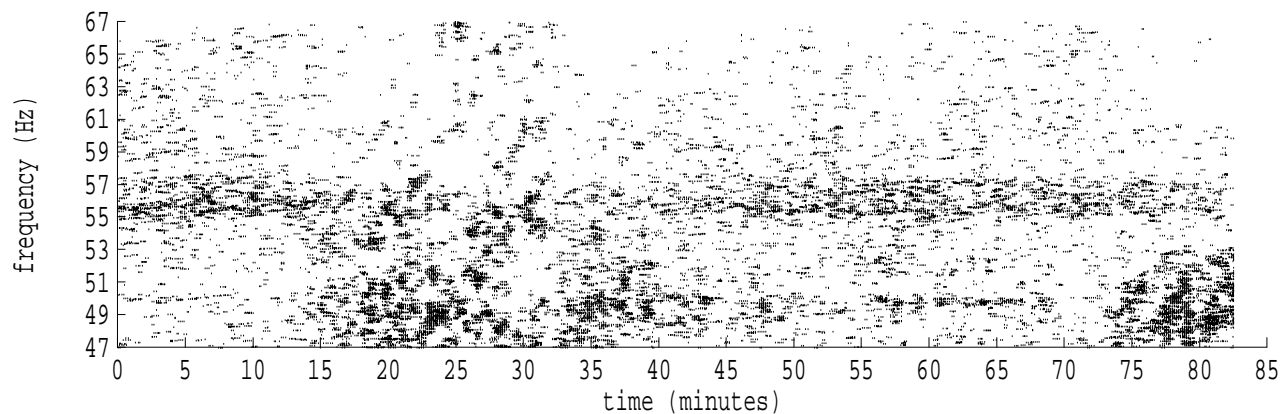
fft size: 16384  
overlap: 7/8  
sw\_hamm: 1  
sample rate: 228 Hz  
bin width: 0.0139 Hz  
int time: 71.86 sec  
bin freq: 56.944 Hz  
threshold: 2.50  
r\_max: 4908  
c rms: 1307  
n (rms): 41  
offset: -4  
pkr median: 1026  
ave median: 436  
nor median: 438  
sdv median: 304  
n median: 531  
peak snr: 21.0 dB  
c snr: 9.5 dB  
sw\_line: 1  
sw\_theta: 1  
freq: 56.9420 Hz  
ship spd: -1.523 m/s  
-2.962 knts

Heard Island - West Coast (U.S.) File: w0260916.sam Ch. 6 Julian:026:09:16:11



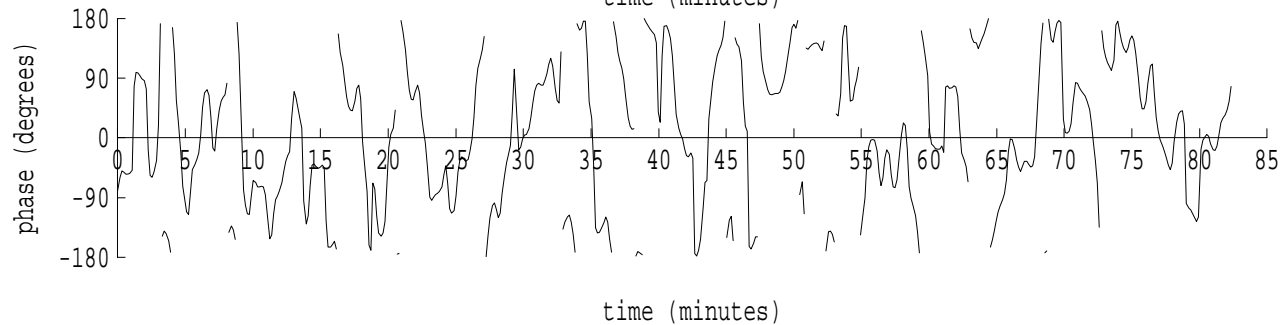
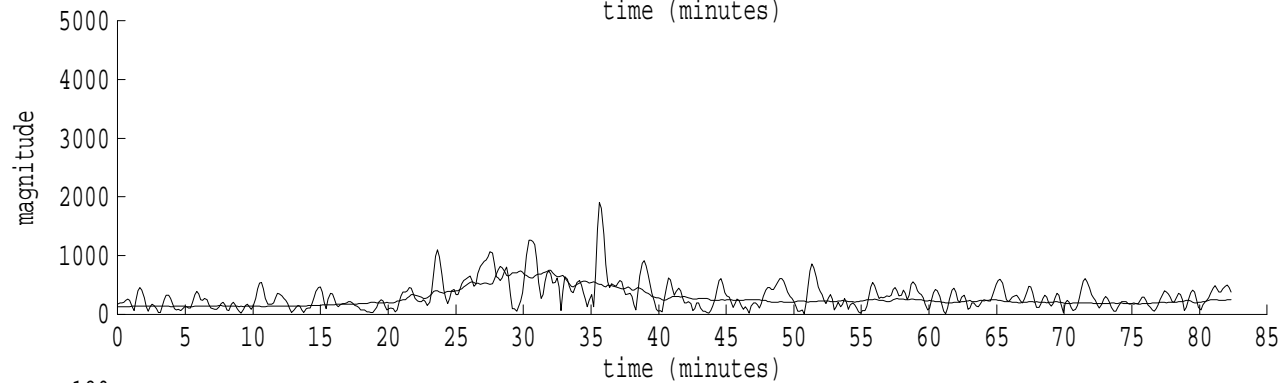
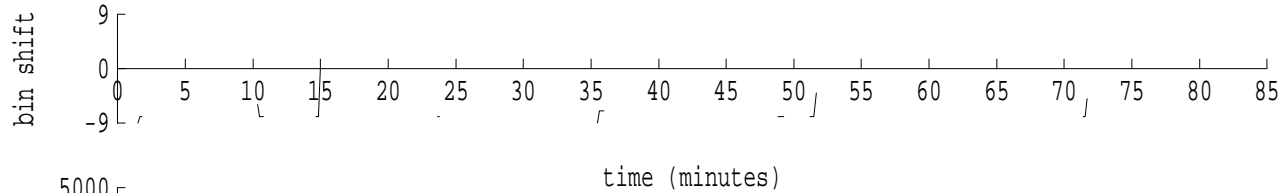
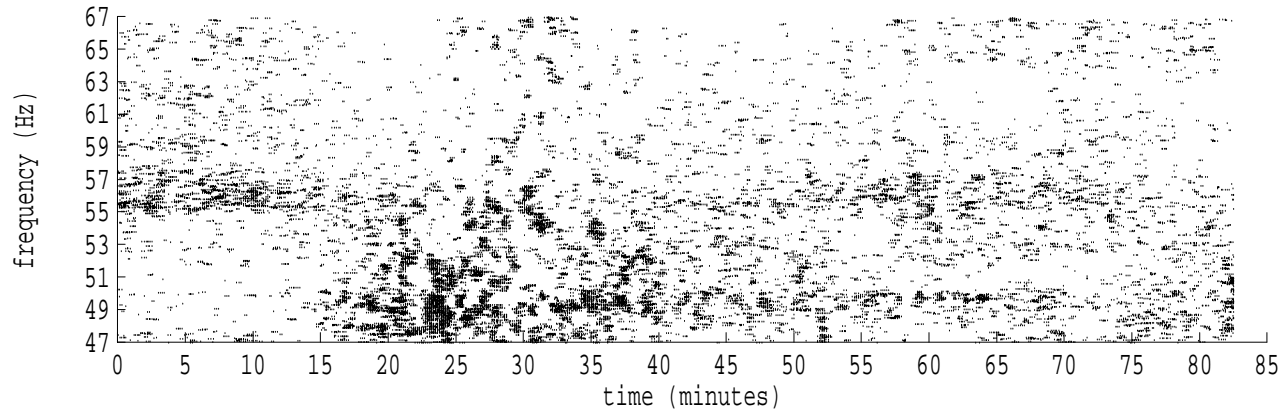
fft size: 16384  
overlap: 7/8  
sw\_hamm: 1  
sample rate: 228 Hz  
bin width: 0.0139 Hz  
int time: 71.86 sec  
bin freq: 56.972 Hz  
threshold: 2.50  
r\_max: 8088  
c rms: 2303  
n (rms): 30  
offset: -2  
pkr median: 1084  
ave median: 421  
nor median: 418  
sdv median: 324  
n median: 544  
peak snr: 25.7 dB  
c snr: 14.8 dB  
sw\_line: 1  
sw\_theta: 1  
freq: 56.9727 Hz  
ship spd: -0.718 m/s  
-1.397 knts

Heard Island - West Coast (U.S.) File: w0260916.sam Ch. 7 Julian:026:09:16:11



fft size: 16384  
overlap: 7/8  
sw\_hamm: 1  
sample rate: 228 Hz  
bin width: 0.0139 Hz  
int time: 71.86 sec  
bin freq: 56.903 Hz  
threshold: 2.50  
r\_max: 2921  
c rms: 805  
n (rms): 61  
offset: -7  
pkr median: 603  
ave median: 286  
nor median: 288  
sdv median: 134  
n median: 524  
peak snr: 20.1 dB  
c snr: 8.9 dB  
sw\_line: 1  
sw\_theta: 1  
freq: 56.9029 Hz  
ship spd: -2.551 m/s  
-4.961 knts

Heard Island - West Coast (U.S.) File: w0260916.sam Ch. 8 Julian:026:09:16:11



fft size: 16384  
overlap: 7/8  
sw\_hamm: 1  
sample rate: 228 Hz  
bin width: 0.0139 Hz  
int time: 71.86 sec  
bin freq: 56.889 Hz  
threshold: 2.50  
r\_max: 2068  
c rms: 834  
n (rms): 29  
offset: -8  
pkr median: 509  
ave median: 270  
nor median: 270  
sdv median: 150  
n median: 538  
peak snr: 17.7 dB  
c snr: 9.8 dB  
sw\_line: 1  
sw\_theta: 1  
freq: 56.8885 Hz  
ship spd: -2.930 m/s  
-5.698 knts