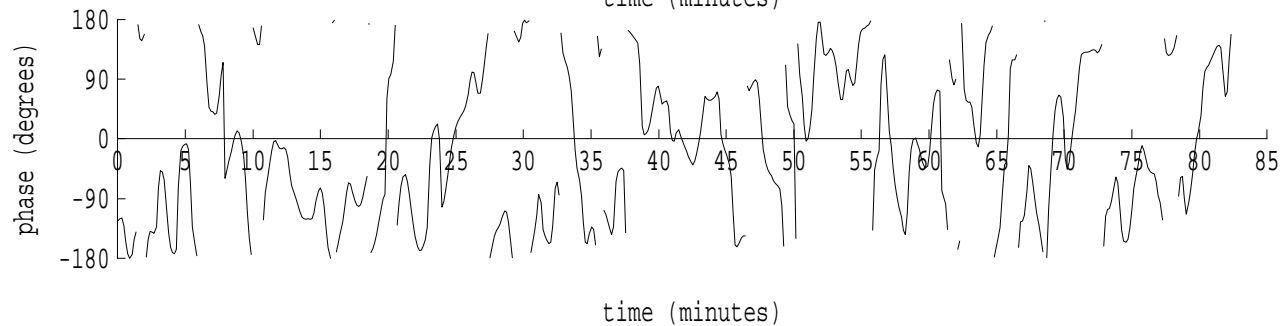
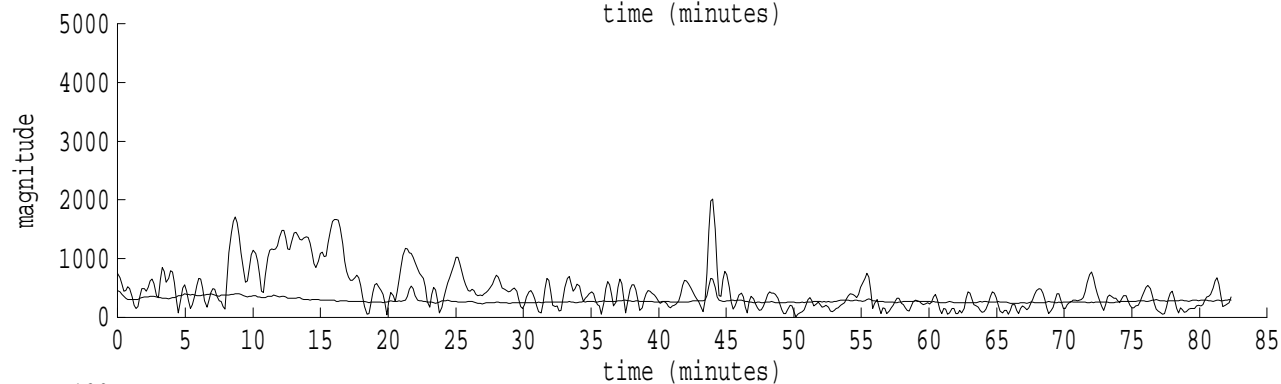
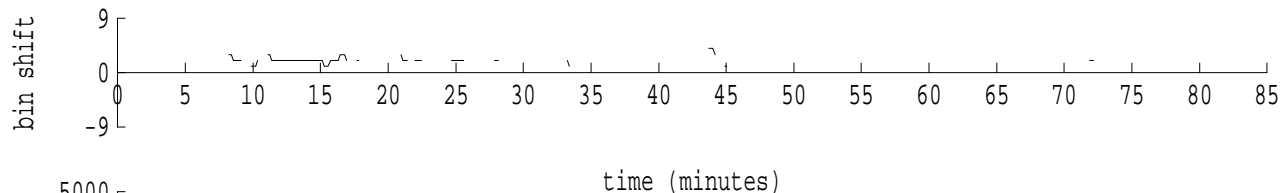
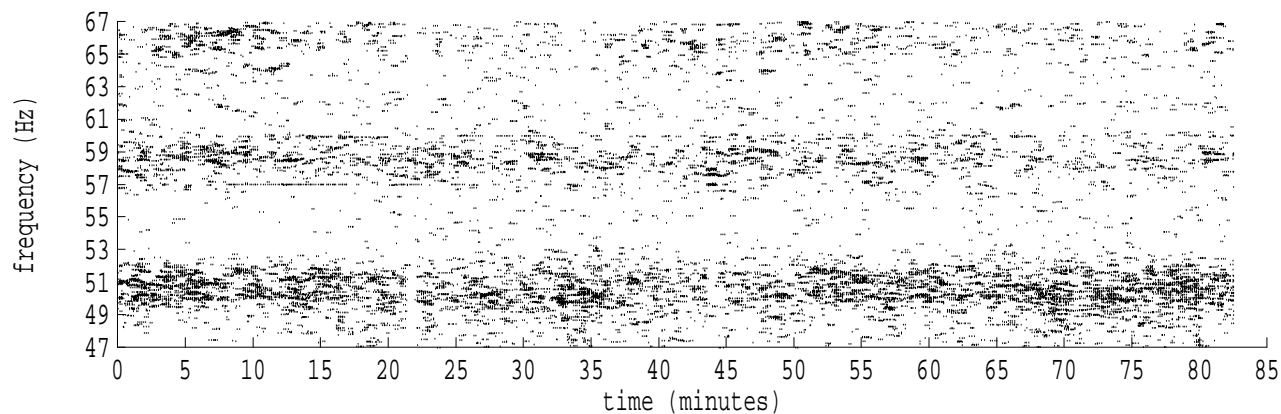
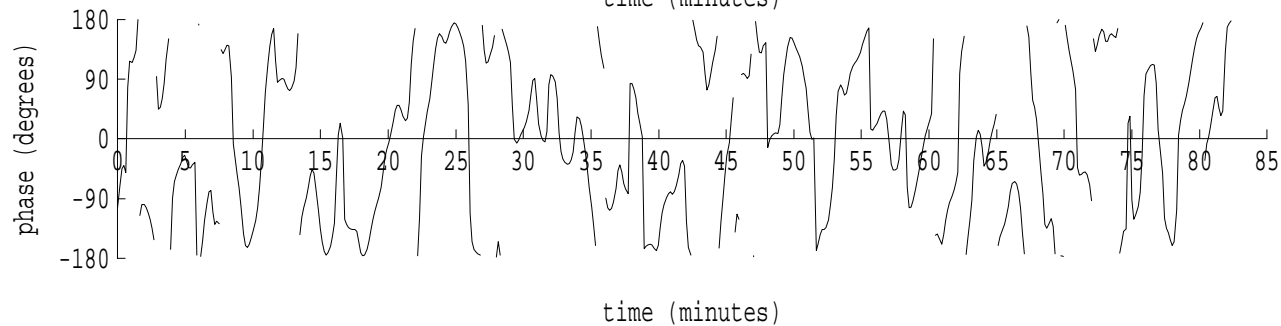
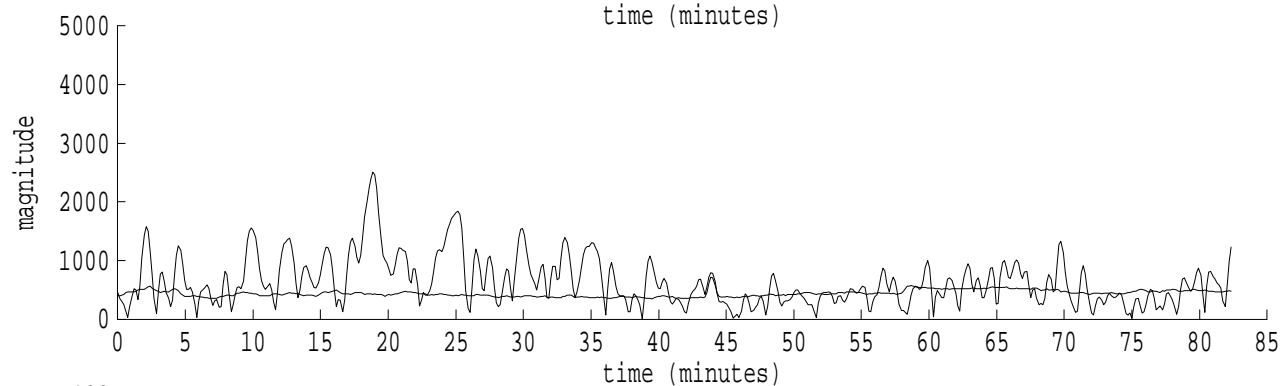
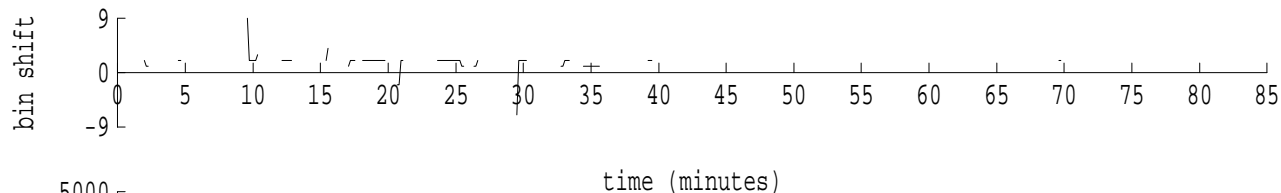
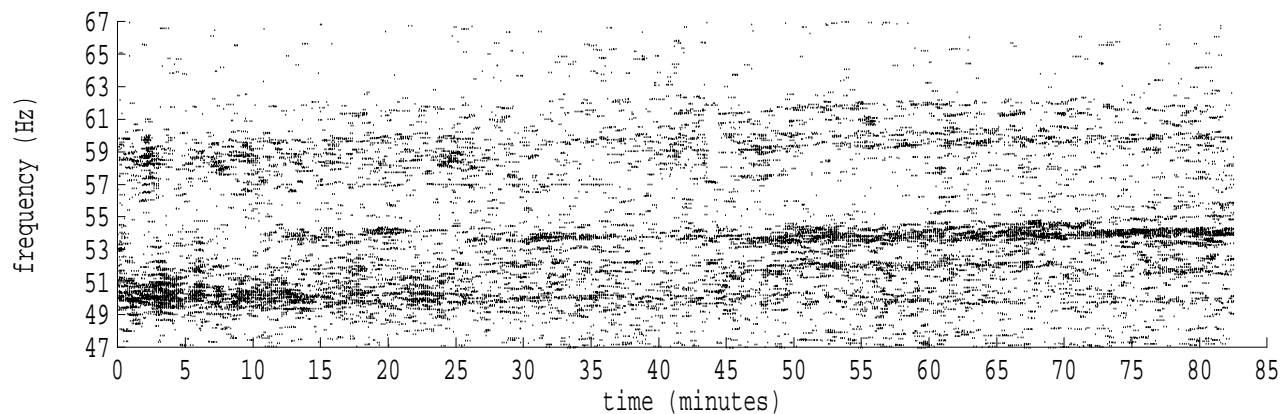


Heard Island - Bermuda File b0310852.sam Ch. 1 Julian:031:08:52:16



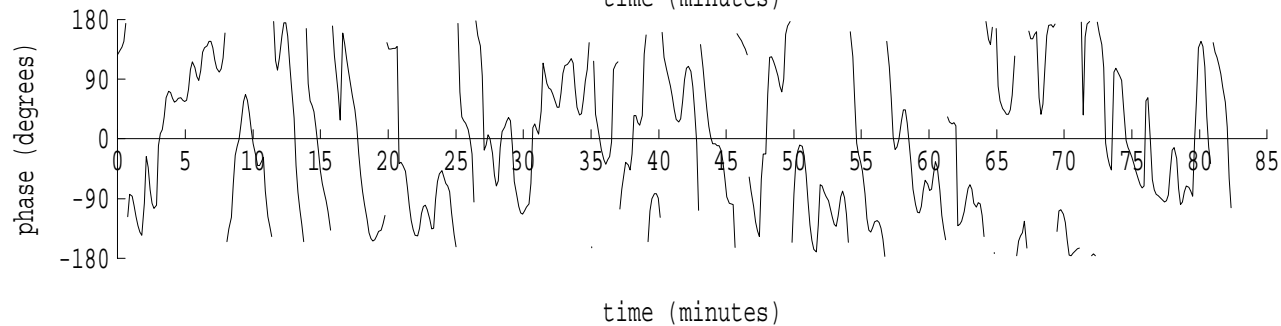
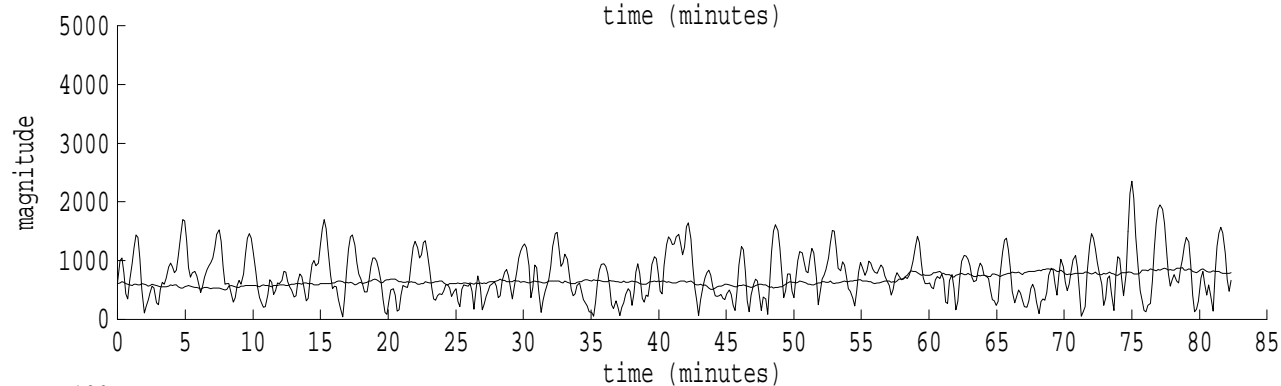
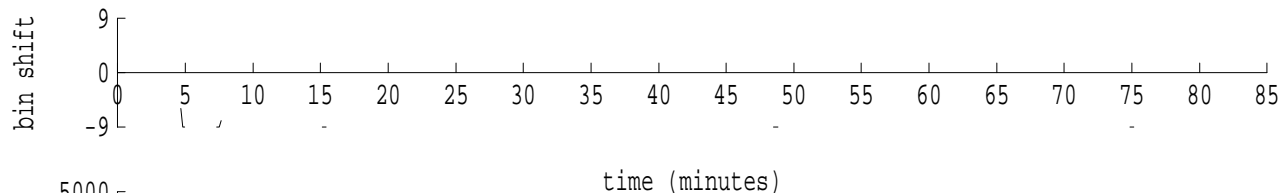
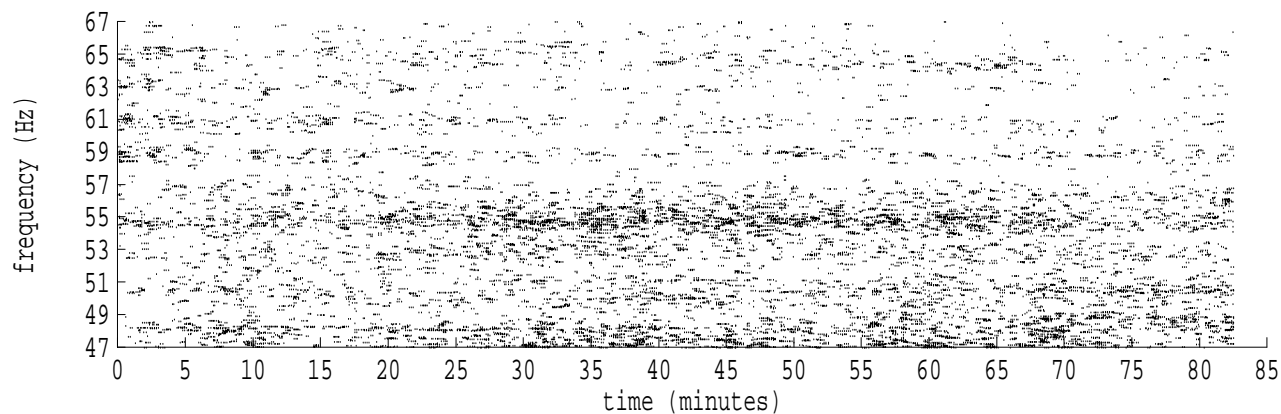
fft size: 16384  
overlap: 7/8  
sw\_hamm: 1  
sample rate: 228 Hz  
bin width: 0.0139 Hz  
int time: 71.86 sec  
bin freq: 57.028 Hz  
threshold: 2.50  
r\_max: 2537  
c rms: 1179  
n (rms): 84  
offset: 2  
pkr median: 668  
ave median: 286  
nor median: 281  
sdv median: 46  
n median: 498  
peak snr: 19.1 dB  
c snr: 12.4 dB  
sw\_line: 1  
sw\_theta: 1  
freq: 57.0278 Hz  
ship spd: 0.732 m/s  
1.423 knts

Heard Island - Bermuda File b0310852.sam Ch. 2 Julian:031:08:52:16



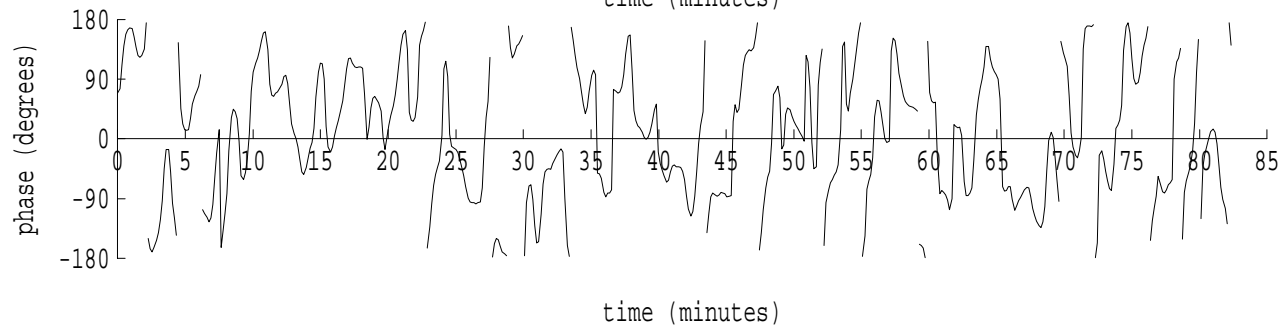
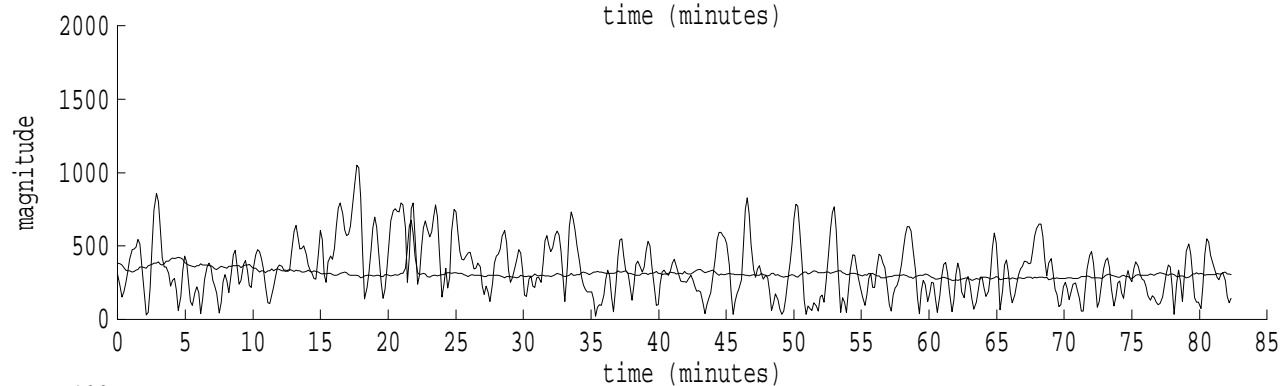
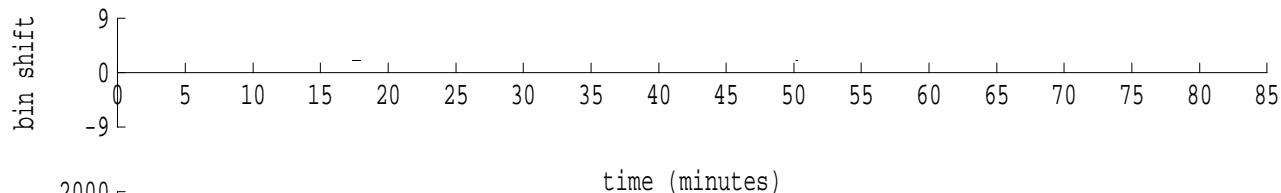
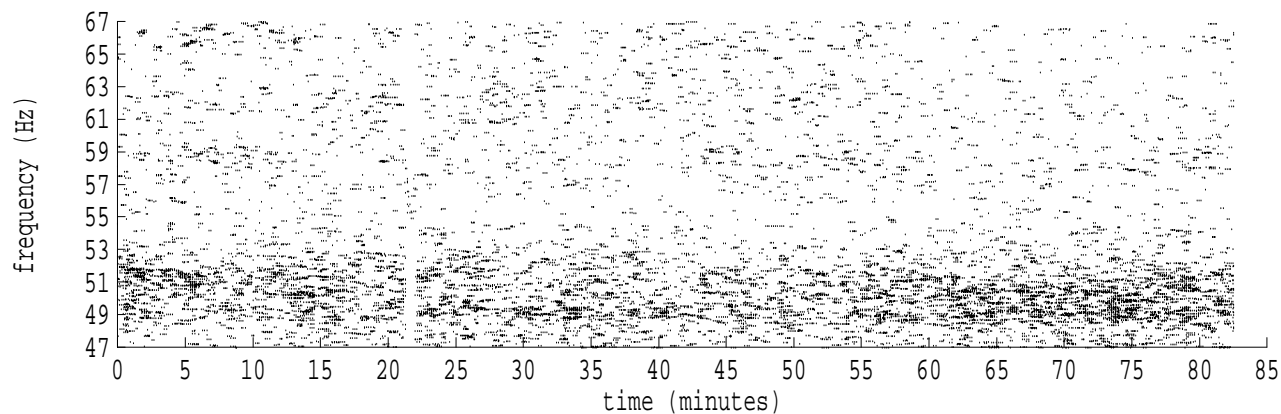
fft size: 16384  
overlap: 7/8  
sw\_hamm: 1  
sample rate: 228 Hz  
bin width: 0.0139 Hz  
int time: 71.86 sec  
bin freq: 57.028 Hz  
threshold: 2.50  
r\_max: 2504  
c rms: 1418  
n (rms): 84  
offset: 2  
pkr median: 425  
ave median: 442  
nor median: 444  
sdv median: 56  
n median: 507  
peak snr: 15.0 dB  
c snr: 10.1 dB  
sw\_line: 1  
sw\_theta: 1  
freq: 57.0260 Hz  
ship spd: 0.683 m/s  
1.328 knts

Heard Island - Bermuda File b0310852.sam Ch. 3 Julian:031:08:52:16



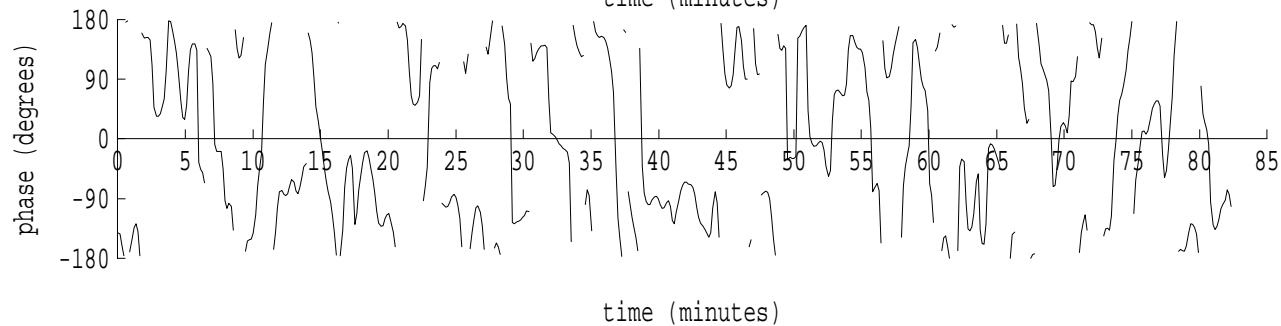
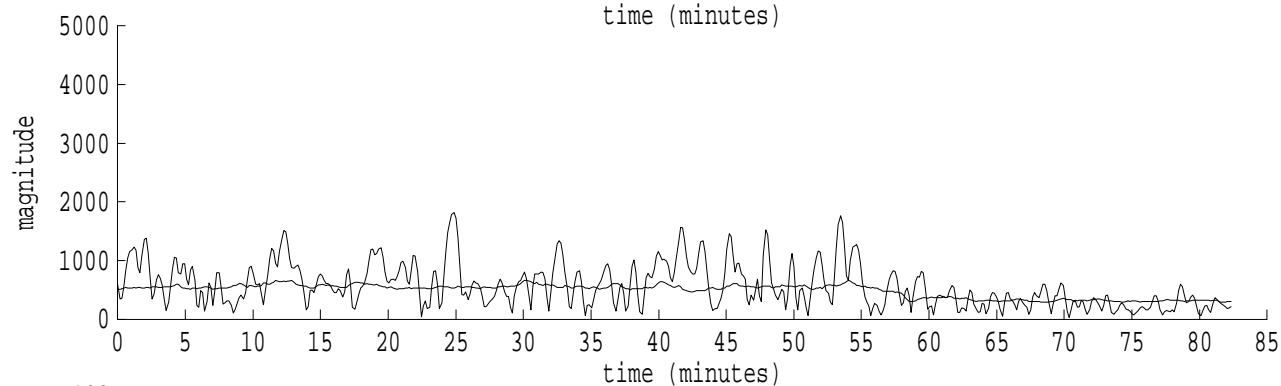
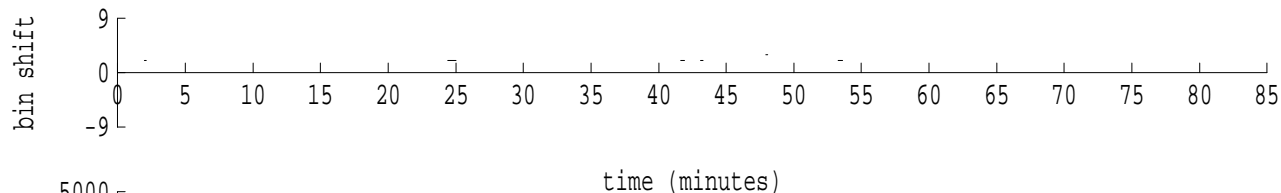
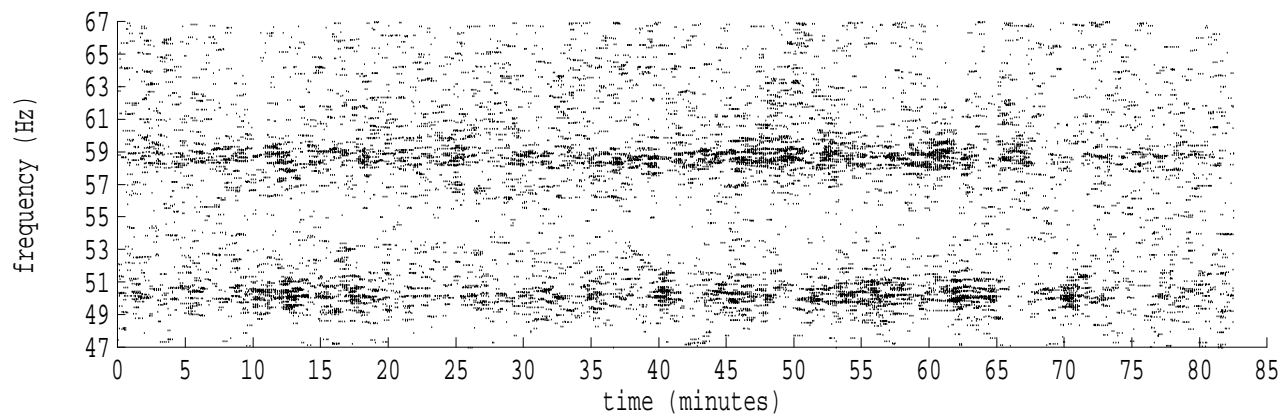
fft size: 16384  
overlap: 7/8  
sw\_hamm: 1  
sample rate: 228 Hz  
bin width: 0.0139 Hz  
int time: 71.86 sec  
bin freq: 56.875 Hz  
threshold: 2.50  
r\_max: 2830  
c rms: 1680  
n (rms): 17  
offset: -9  
pkr median: 873  
ave median: 666  
nor median: 665  
sdv median: 92  
n median: 549  
peak snr: 12.6 dB  
c snr: 8.0 dB  
sw\_line: 1  
sw\_theta: 1  
freq: 56.8769 Hz  
ship spd: -3.235 m/s  
-6.291 knts

Heard Island - Bermuda File b0310852.sam Ch. 4 Julian:031:08:52:16



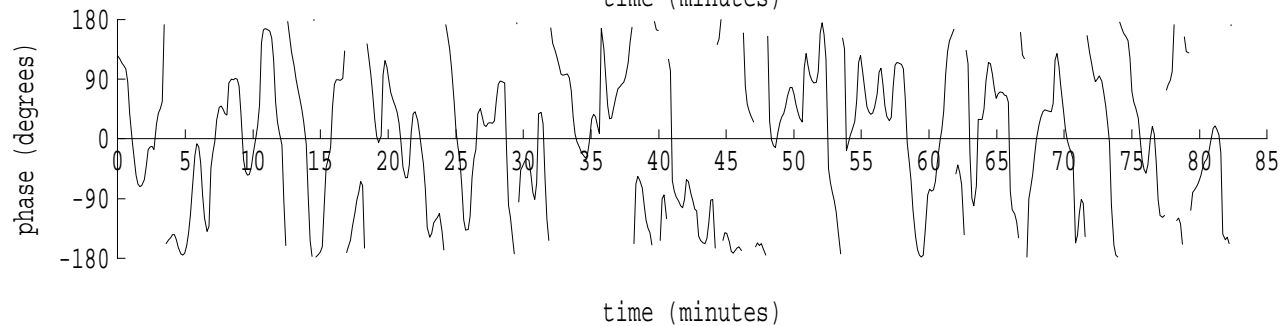
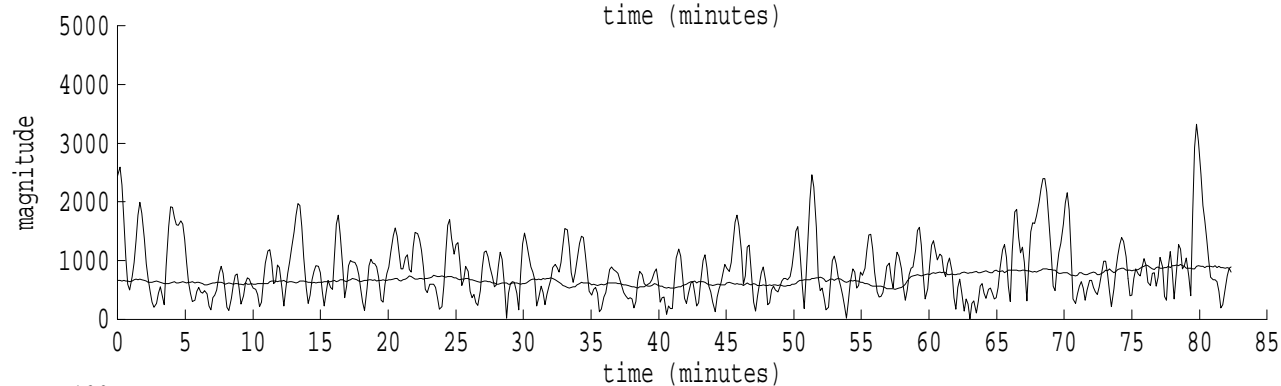
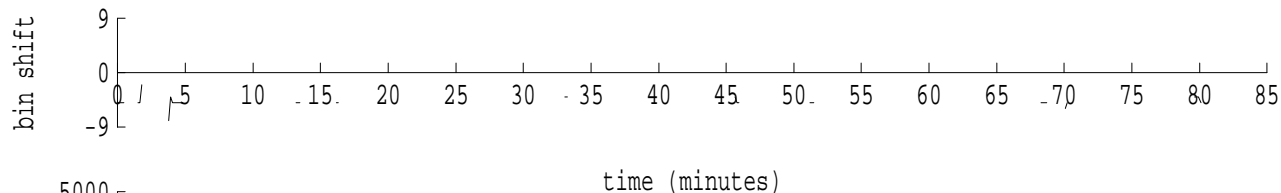
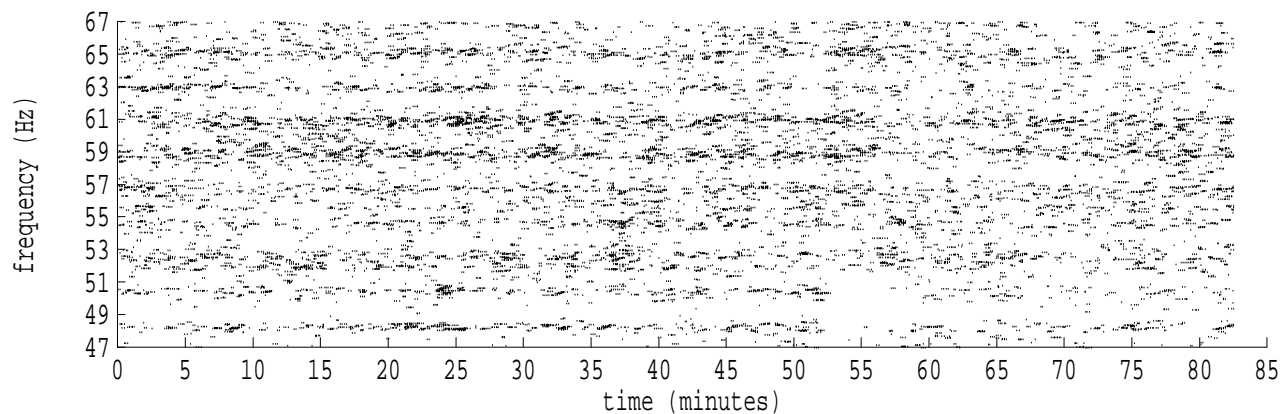
fft size: 16384  
overlap: 7/8  
sw\_hamm: 1  
sample rate: 228 Hz  
bin width: 0.0139 Hz  
int time: 71.86 sec  
bin freq: 57.028 Hz  
threshold: 2.50  
r\_max: 1425  
c rms: 856  
n (rms): 11  
offset: 2  
pkr median: 674  
ave median: 313  
nor median: 313  
sdv median: 37  
n median: 548  
peak snr: 13.2 dB  
c snr: 8.7 dB  
sw\_line: 1  
sw\_theta: 1  
freq: 57.0271 Hz  
ship spd: 0.711 m/s  
1.383 knts

Heard Island - Bermuda File b0310852.sam Ch. 5 Julian:031:08:52:16



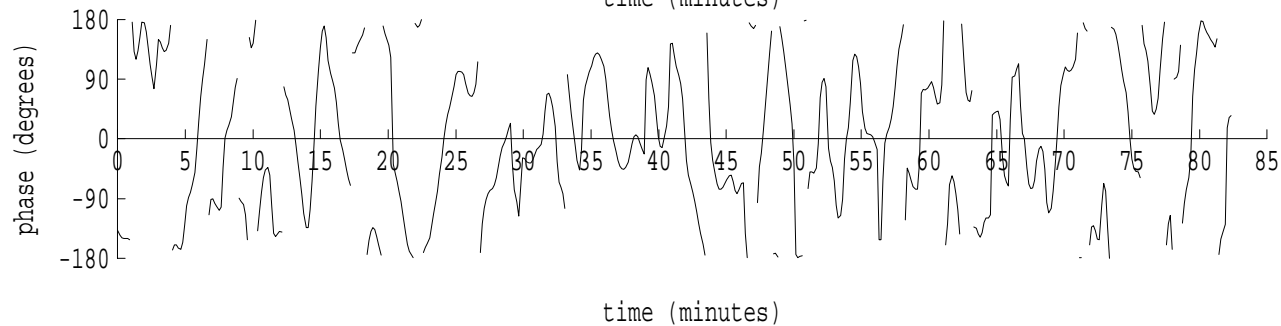
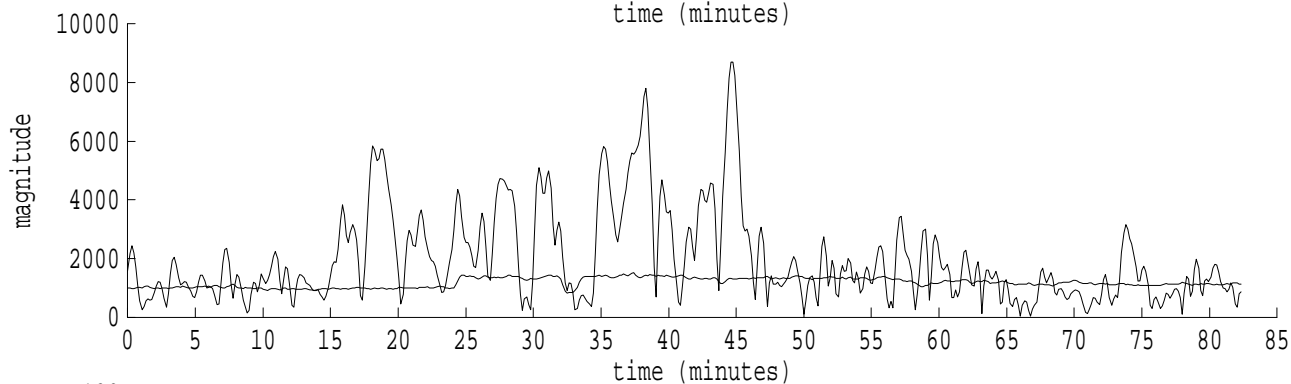
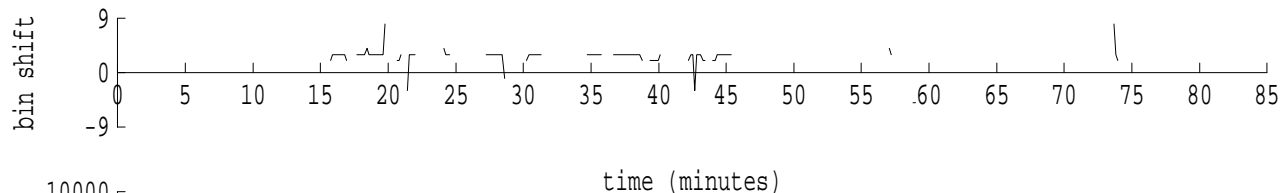
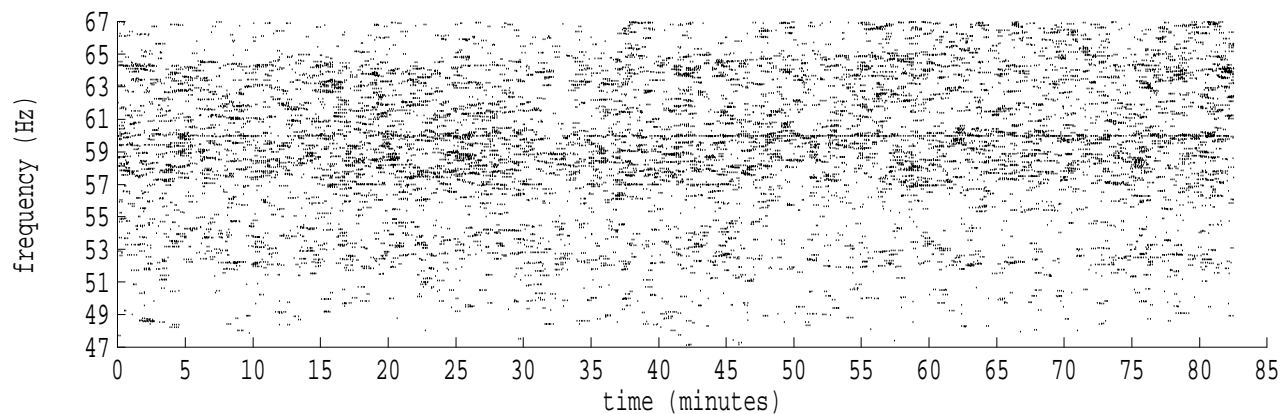
fft size: 16384  
overlap: 7/8  
sw\_hamm: 1  
sample rate: 228 Hz  
bin width: 0.0139 Hz  
int time: 71.86 sec  
bin freq: 57.028 Hz  
threshold: 2.50  
r\_max: 2163  
c rms: 1549  
n (rms): 18  
offset: 2  
pkr median: 588  
ave median: 488  
nor median: 487  
sdv median: 112  
n median: 546  
peak snr: 12.9 dB  
c snr: 10.0 dB  
sw\_line: 1  
sw\_theta: 1  
freq: 57.0278 Hz  
ship spd: 0.730 m/s  
1.420 knts

Heard Island - Bermuda File b0310852.sam Ch. 6 Julian:031:08:52:16



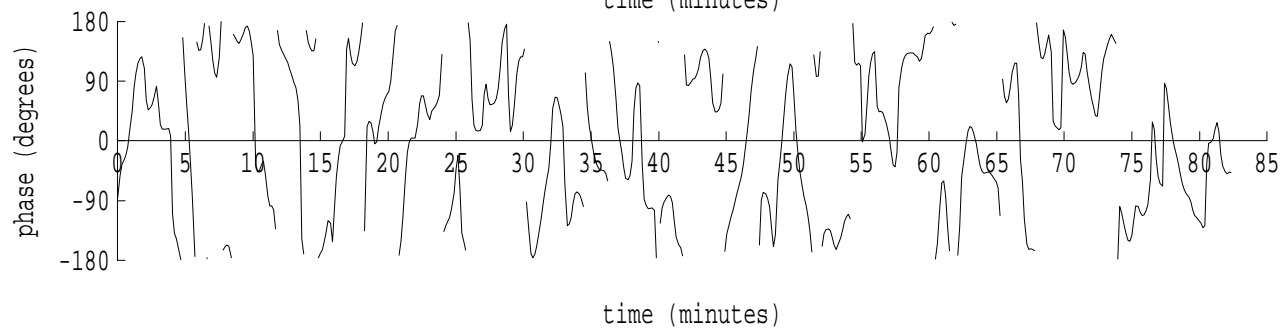
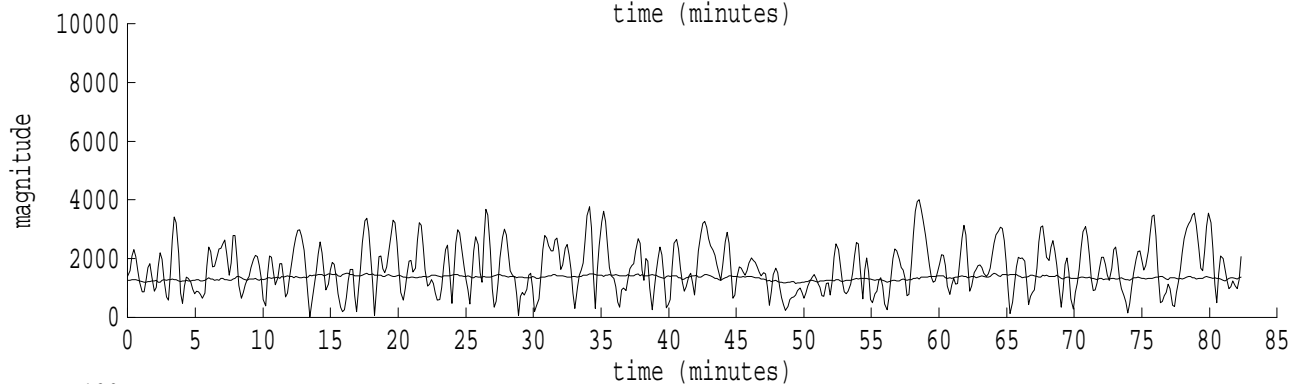
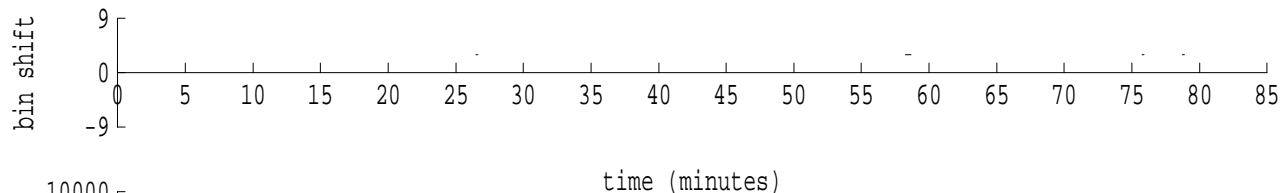
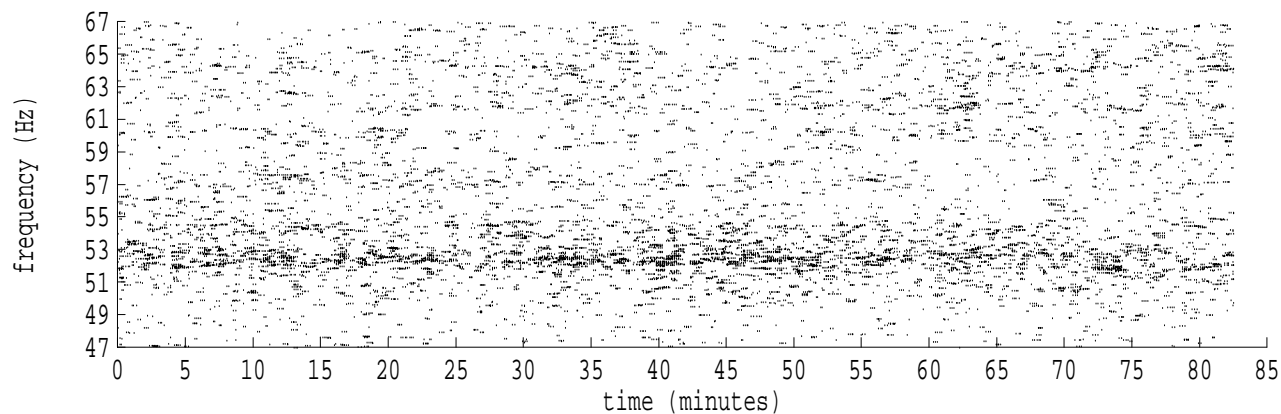
fft size: 16384  
overlap: 7/8  
sw\_hamm: 1  
sample rate: 228 Hz  
bin width: 0.0139 Hz  
int time: 71.86 sec  
bin freq: 56.930 Hz  
threshold: 2.50  
r\_max: 3775  
c rms: 2066  
n (rms): 39  
offset: -5  
pkr median: 901  
ave median: 687  
nor median: 685  
sdv median: 102  
n median: 539  
peak snr: 14.8 dB  
c snr: 9.6 dB  
sw\_line: 1  
sw\_theta: 1  
freq: 56.9318 Hz  
ship spd: -1.793 m/s  
-3.486 knts

Heard Island - Bermuda File b0310852.sam Ch. 7 Julian:031:08:52:16



fft size: 16384  
overlap: 7/8  
sw\_hamm: 1  
sample rate: 228 Hz  
bin width: 0.0139 Hz  
int time: 71.86 sec  
bin freq: 57.042 Hz  
threshold: 2.50  
r\_max: 8709  
c rms: 4736  
n (rms): 110  
offset: 3  
pkr median: 1322  
ave median: 1184  
nor median: 1169  
sdv median: 152  
n median: 476  
peak snr: 17.4 dB  
c snr: 12.2 dB  
sw\_line: 1  
sw\_theta: 1  
freq: 57.0418 Hz  
ship spd: 1.099 m/s  
2.138 knts

Heard Island - Bermuda File b0310852.sam Ch. 8 Julian:031:08:52:16



fft size: 16384  
overlap: 7/8  
sw\_hamm: 1  
sample rate: 228 Hz  
bin width: 0.0139 Hz  
int time: 71.86 sec  
bin freq: 57.042 Hz  
threshold: 2.50  
r\_max: 5164  
c rms: 3628  
n (rms): 14  
offset: 3  
pkr median: 1393  
ave median: 1354  
nor median: 1352  
sdv median: 72  
n median: 550  
peak snr: 11.6 dB  
c snr: 8.6 dB  
sw\_line: 1  
sw\_theta: 1  
freq: 57.0415 Hz  
ship spd: 1.090 m/s  
2.120 knts