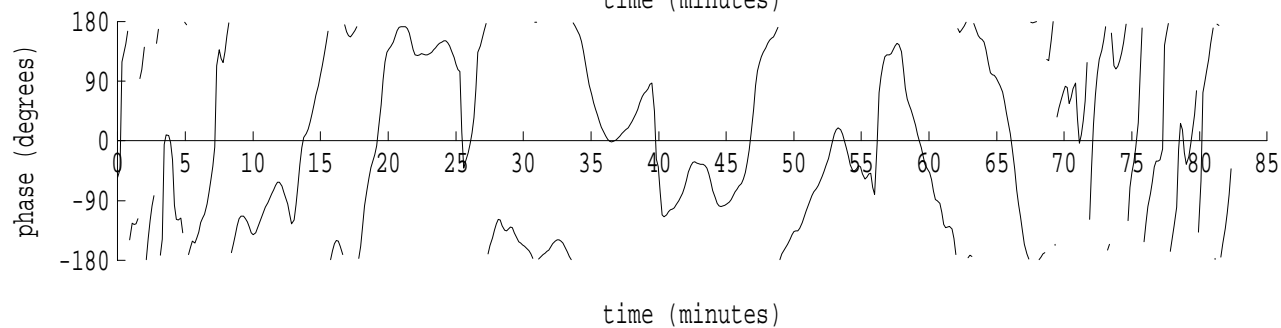
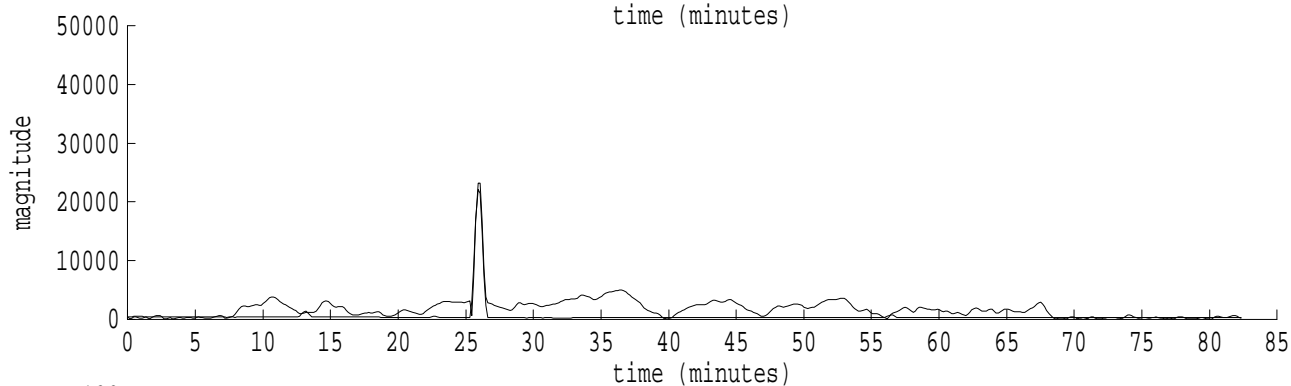
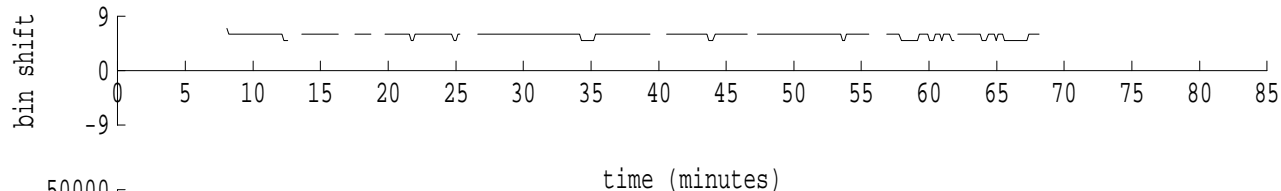
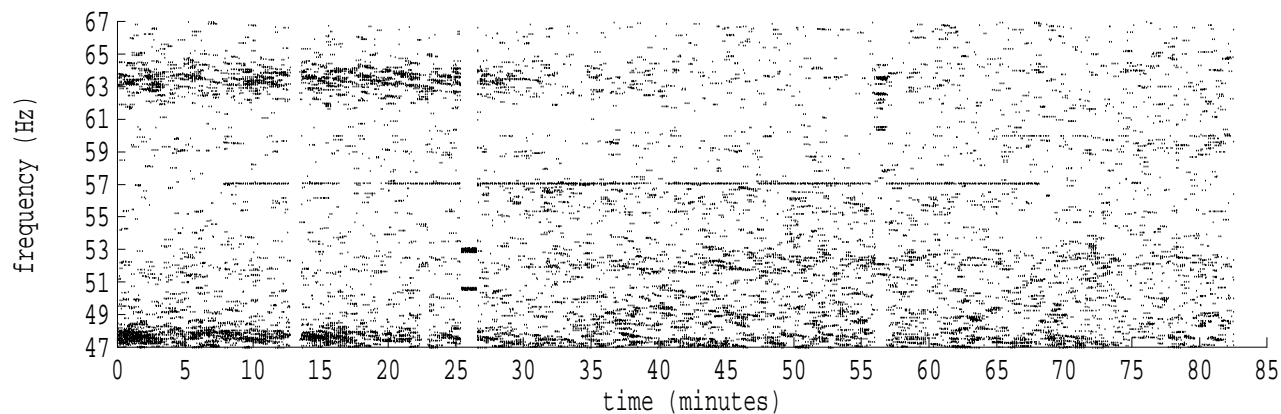
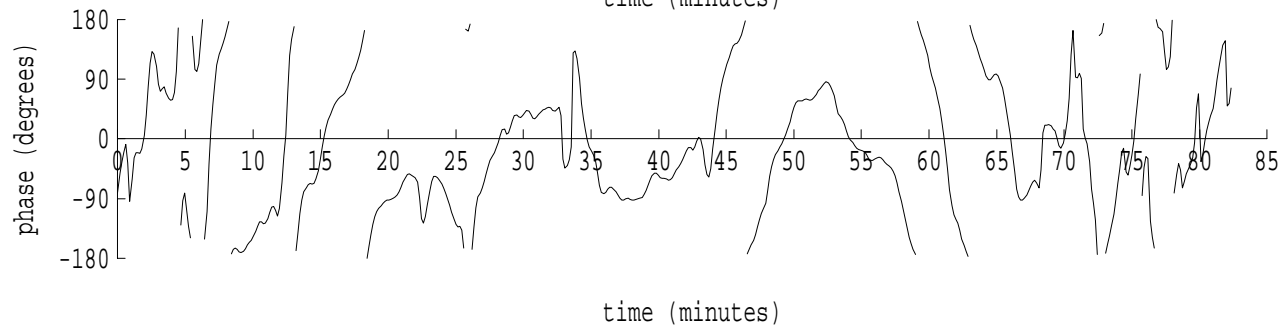
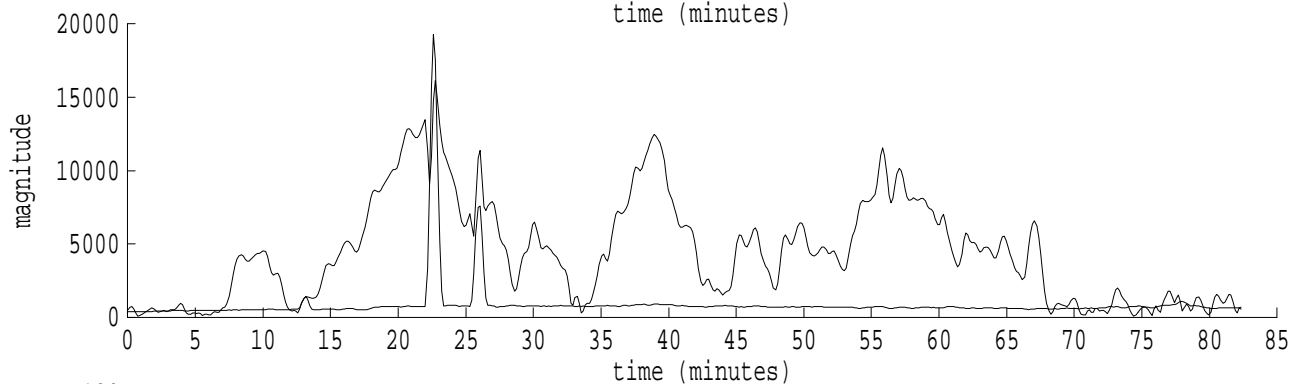
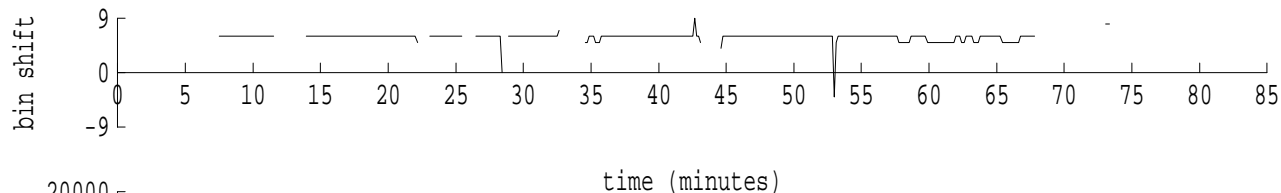
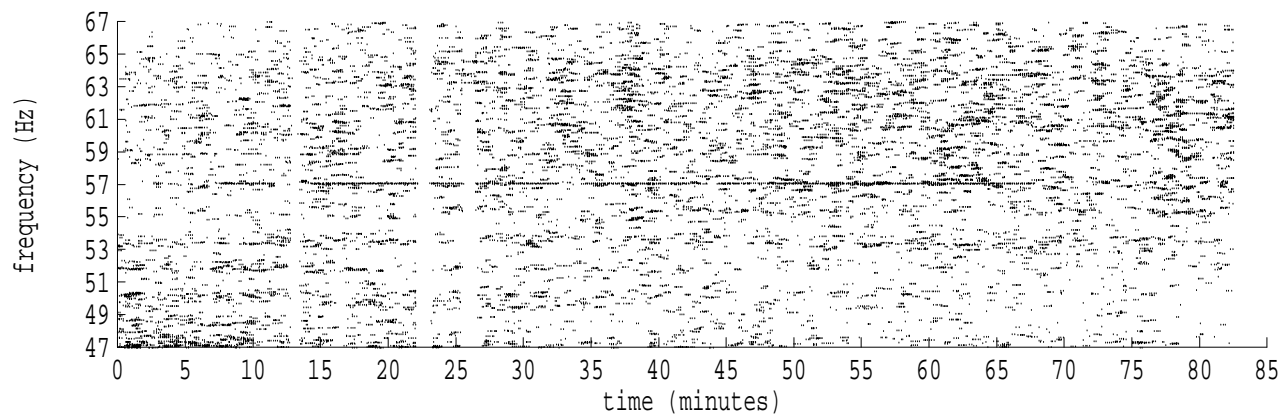


Heard Island - Bermuda File b0301452.sam Ch. 1 Julian:030:14:52:16

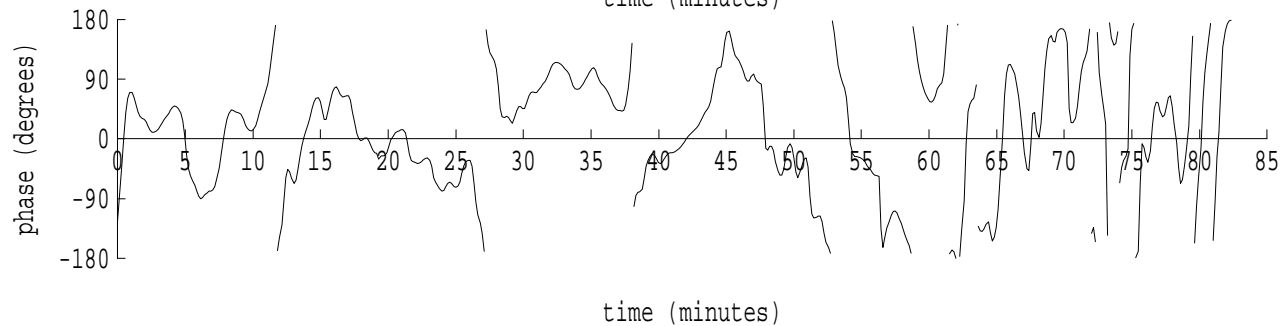
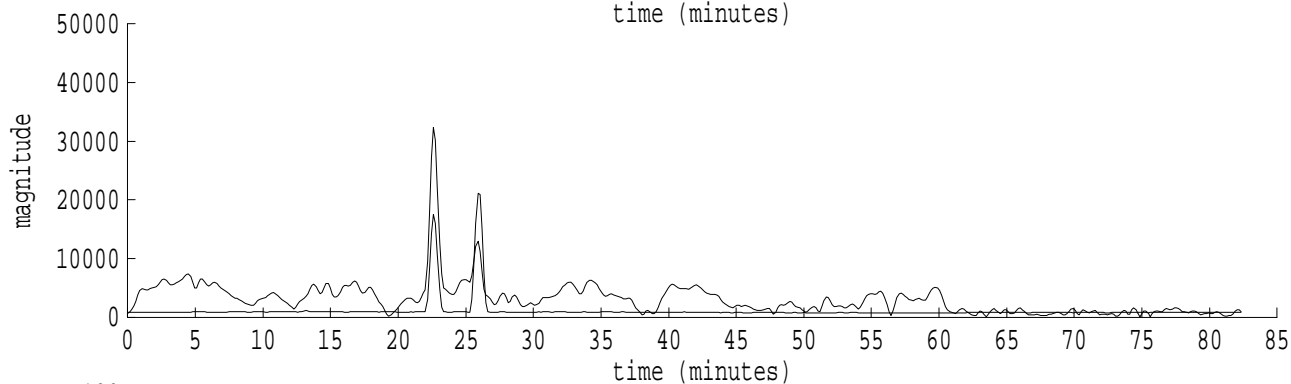
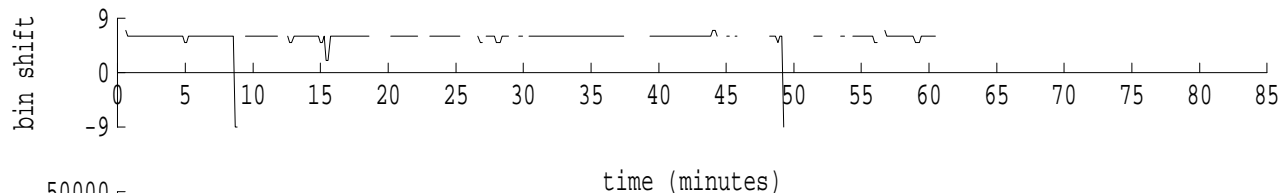
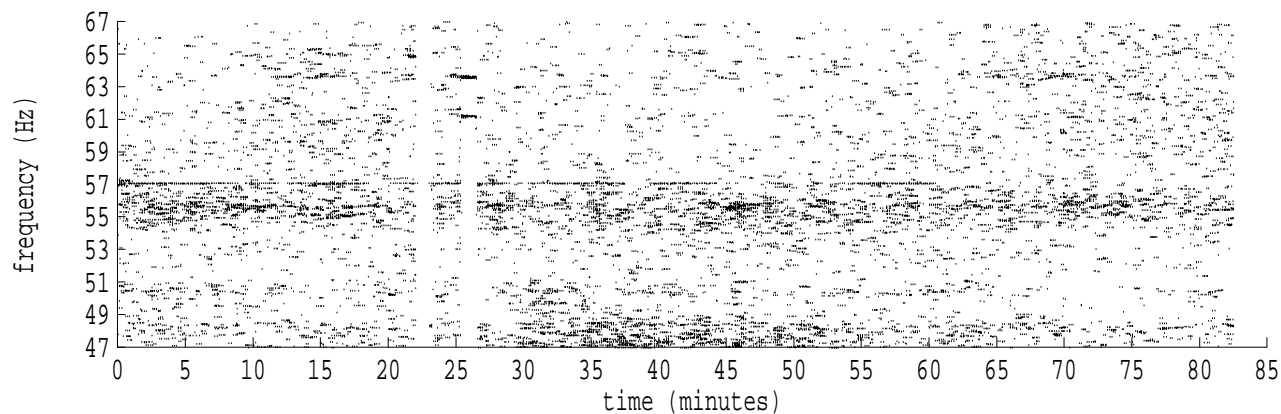


fft size: 16384  
overlap: 7/8  
sw\_hamm: 1  
sample rate: 228 Hz  
bin width: 0.0139 Hz  
int time: 71.86 sec  
bin freq: 57.083 Hz  
threshold: 2.50  
r\_max: 27770  
c rms: 2436  
n (rms): 356  
offset: 6  
pkr median: 22082  
ave median: 494  
nor median: 805  
sdv median: 2684  
n median: 210  
peak snr: 30.7 dB  
c snr: 9.6 dB  
sw\_line: 1  
sw\_theta: 1  
freq: 57.0797 Hz  
ship spd: 2.095 m/s  
4.073 knts



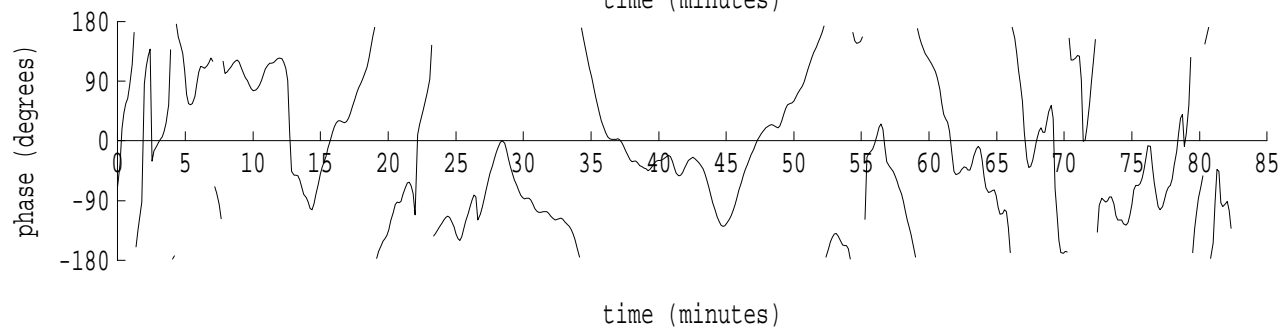
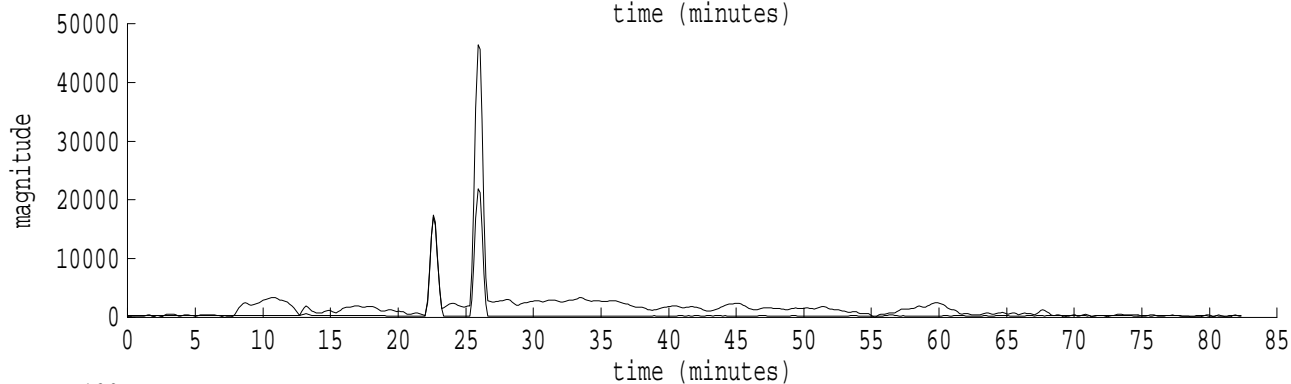
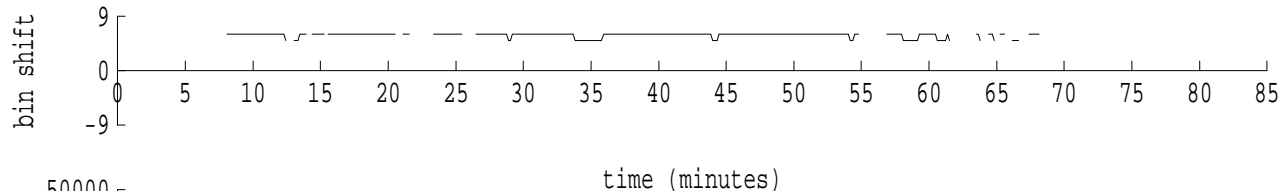
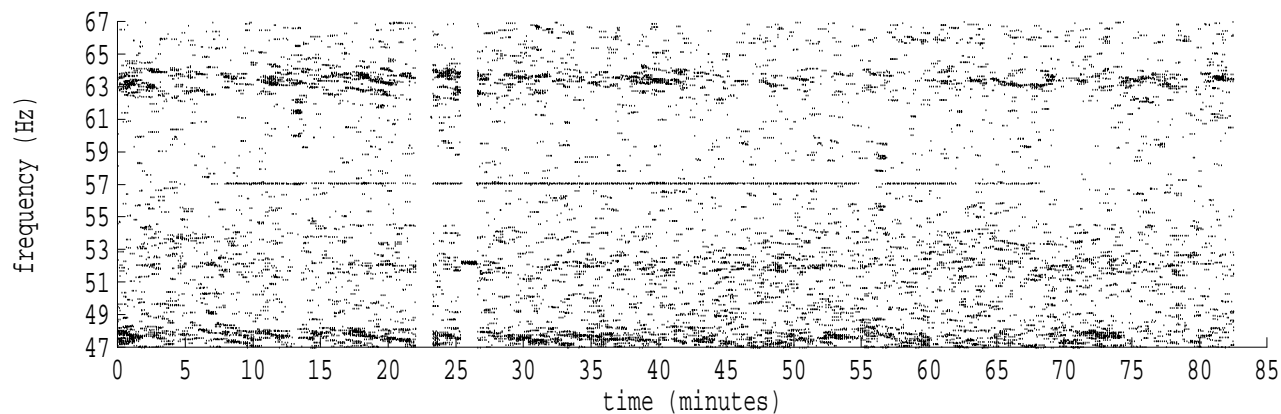
fft size: 16384  
overlap: 7/8  
sw\_hamm: 1  
sample rate: 228 Hz  
bin width: 0.0139 Hz  
int time: 71.86 sec  
bin freq: 57.083 Hz  
threshold: 2.50  
r\_max: 16439  
c rms: 6638  
n (rms): 360  
offset: 6  
pkr median: 15740  
ave median: 867  
nor median: 1142  
sdv median: 2402  
n median: 206  
peak snr: 23.2 dB  
c snr: 15.3 dB  
sw\_line: 1  
sw\_theta: 1  
freq: 57.0800 Hz  
ship spd: 2.104 m/s  
4.091 knts

Heard Island - Bermuda File b0301452.sam Ch. 3 Julian:030:14:52:16



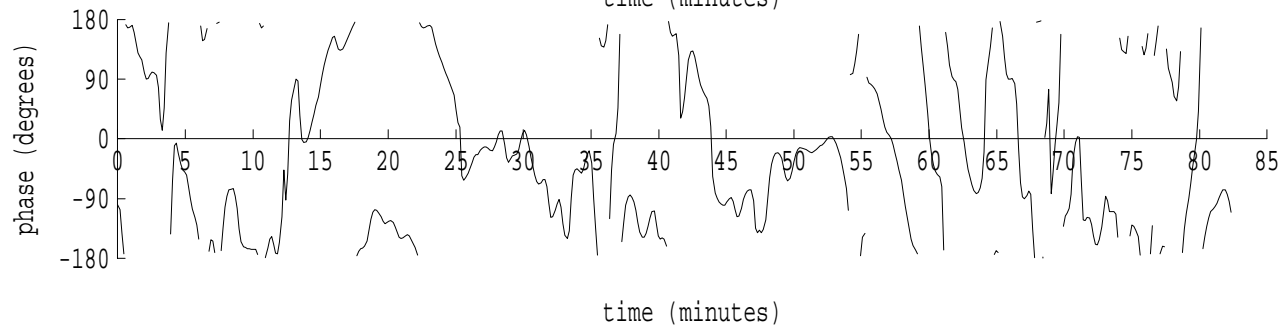
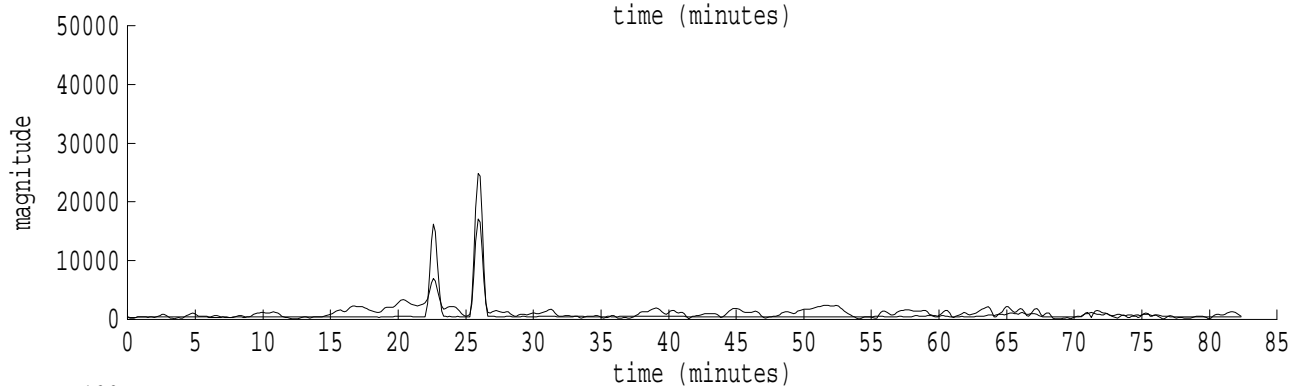
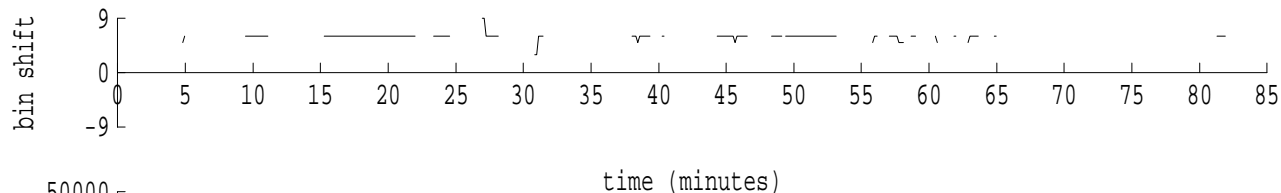
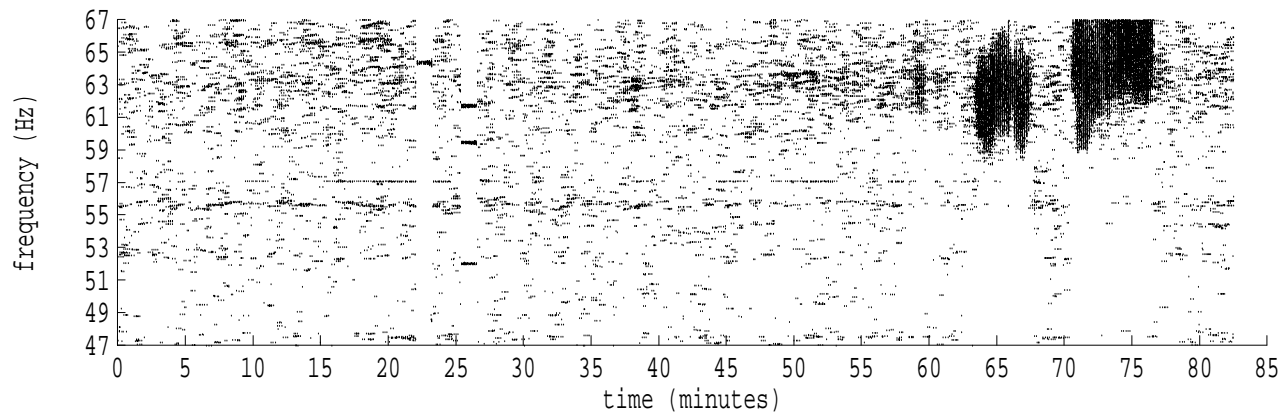
fft size: 16384  
overlap: 7/8  
sw\_hamm: 1  
sample rate: 228 Hz  
bin width: 0.0139 Hz  
int time: 71.86 sec  
bin freq: 57.083 Hz  
threshold: 2.50  
r\_max: 32401  
c rms: 4399  
n (rms): 303  
offset: 6  
pkr median: 17493  
ave median: 1135  
nor median: 1358  
sdv median: 2707  
n median: 292  
peak snr: 27.5 dB  
c snr: 10.2 dB  
sw\_line: 1  
sw\_theta: 1  
freq: 57.0823 Hz  
ship spd: 2.163 m/s  
4.206 knts

Heard Island - Bermuda File b0301452.sam Ch. 4 Julian:030:14:52:16



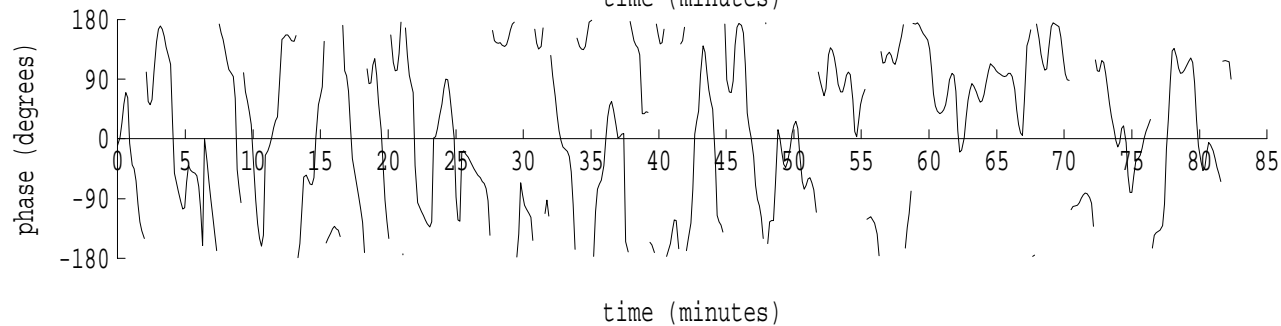
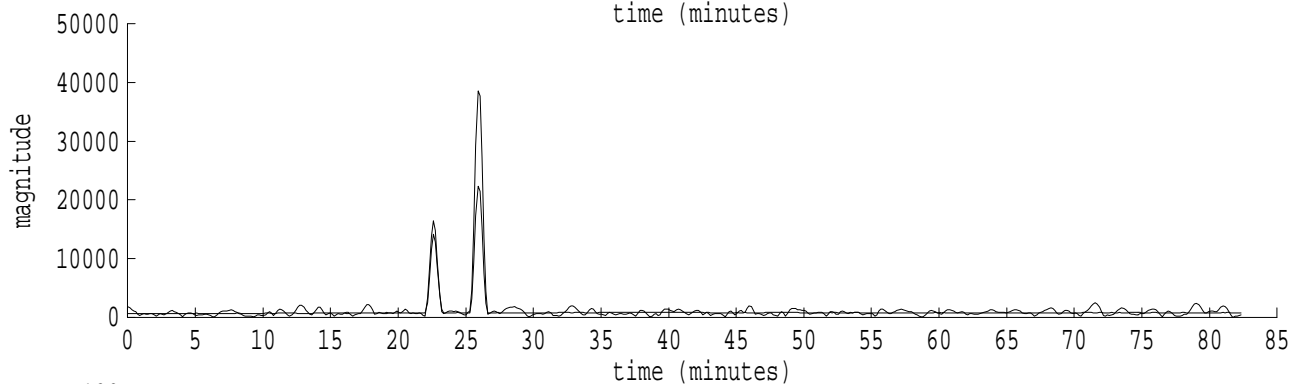
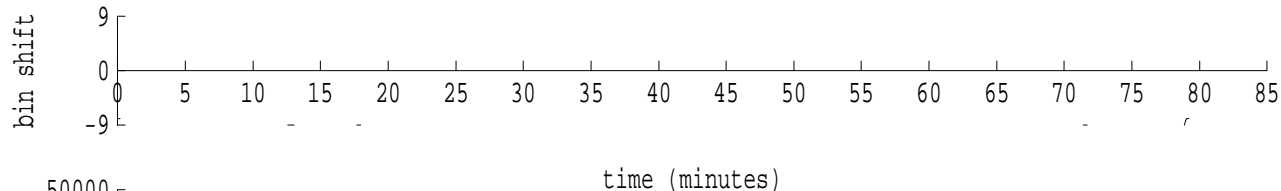
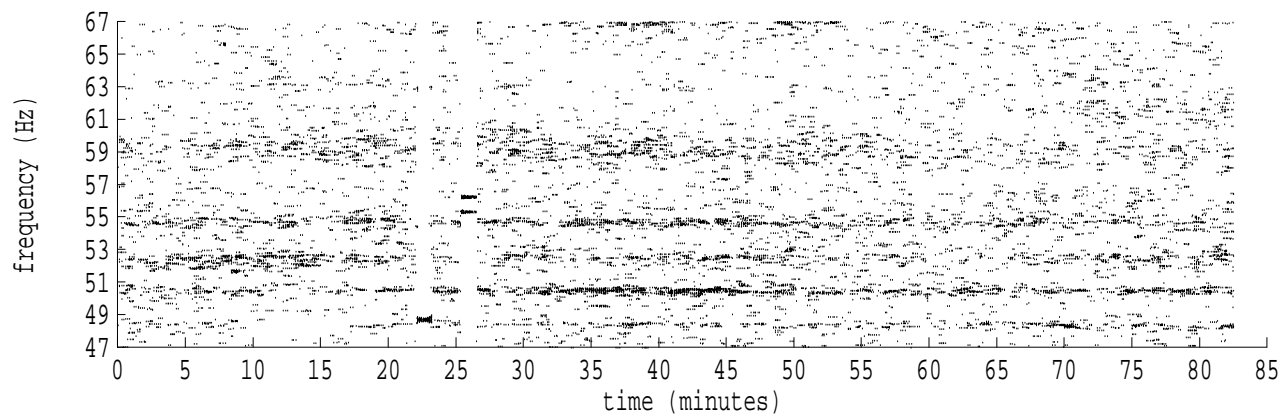
fft size: 16384  
overlap: 7/8  
sw\_hamm: 1  
sample rate: 228 Hz  
bin width: 0.0139 Hz  
int time: 71.86 sec  
bin freq: 57.083 Hz  
threshold: 2.50  
r\_max: 46459  
c rms: 2018  
n (rms): 340  
offset: 6  
pkr median: 21875  
ave median: 559  
nor median: 963  
sdv median: 3123  
n median: 238  
peak snr: 33.7 dB  
c snr: 6.4 dB  
sw\_line: 1  
sw\_theta: 1  
freq: 57.0800 Hz  
ship spd: 2.104 m/s  
4.091 knts

Heard Island - Bermuda File b0301452.sam Ch. 5 Julian:030:14:52:16



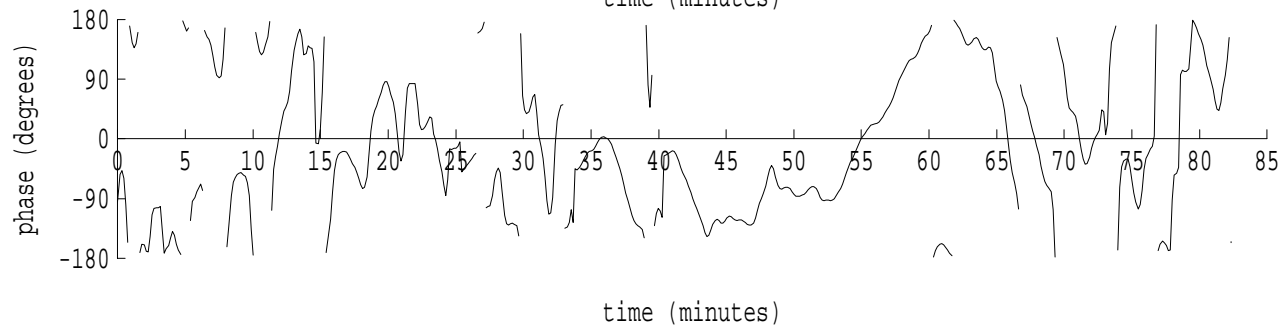
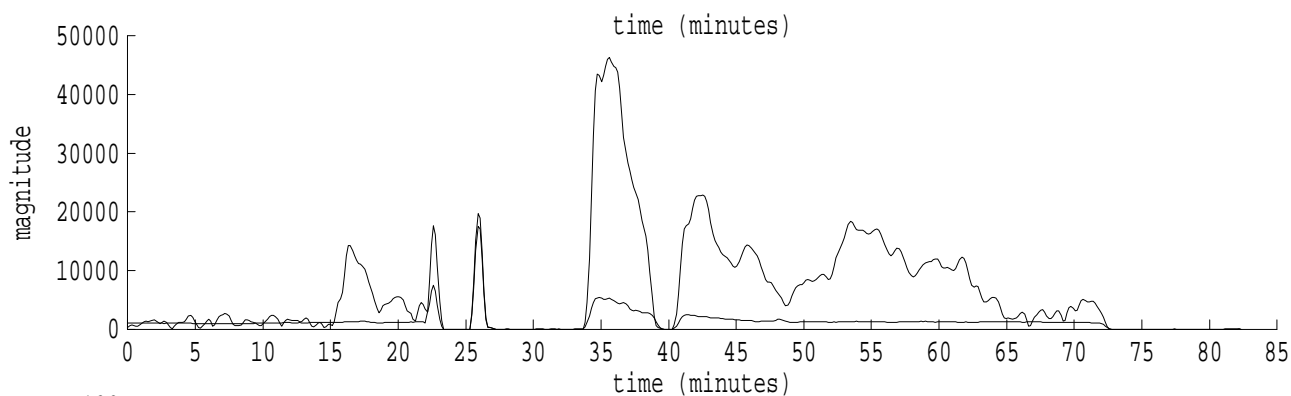
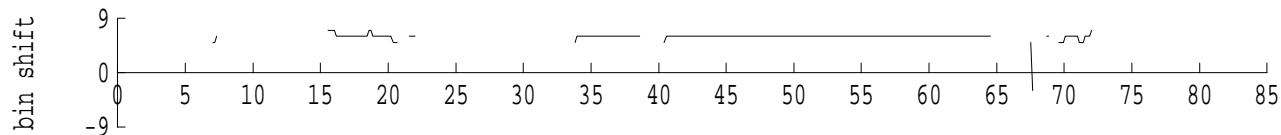
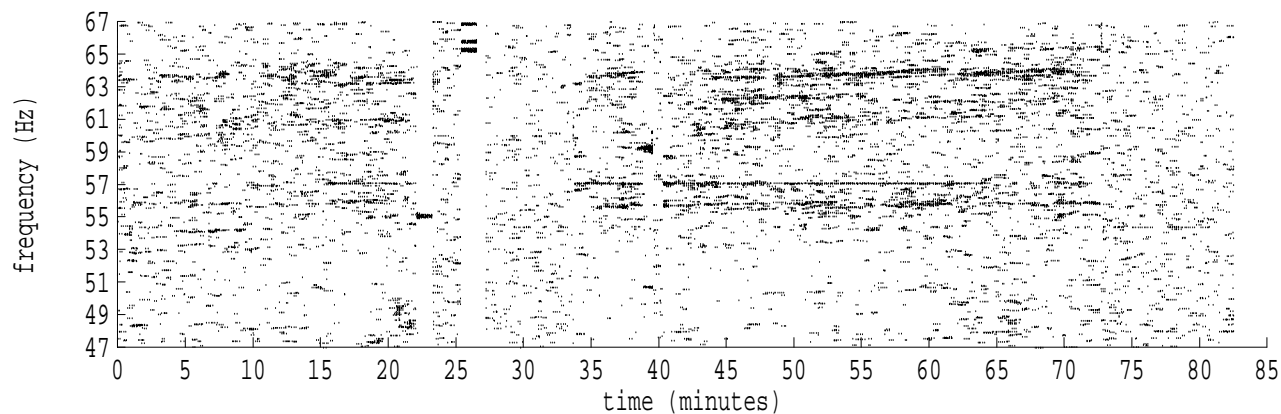
fft size: 16384  
overlap: 7/8  
sw\_hamm: 1  
sample rate: 228 Hz  
bin width: 0.0139 Hz  
int time: 71.86 sec  
bin freq: 57.083 Hz  
threshold: 2.50  
r\_max: 21883  
c rms: 1743  
n (rms): 175  
offset: 6  
pkr median: 24810  
ave median: 792  
nor median: 897  
sdv median: 2512  
n median: 426  
peak snr: 27.7 dB  
c snr: 5.8 dB  
sw\_line: 1  
sw\_theta: 1  
freq: 57.0818 Hz  
ship spd: 2.149 m/s  
4.178 knts

Heard Island - Bermuda File b0301452.sam Ch. 6 Julian:030:14:52:16



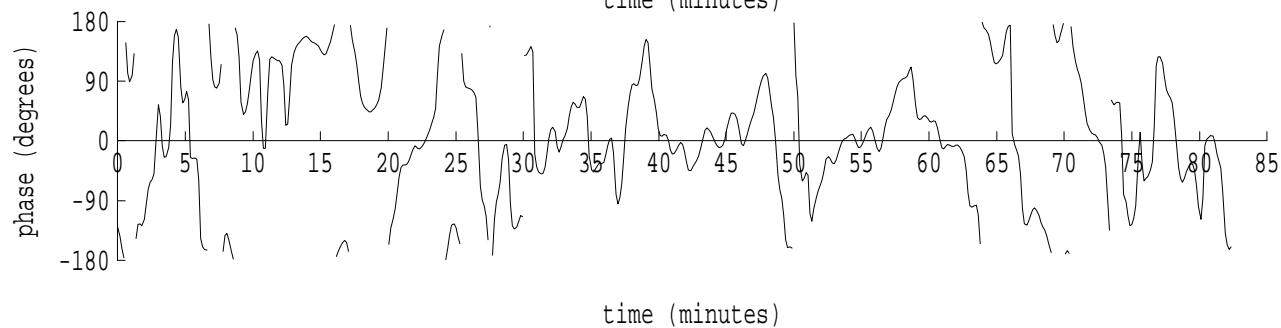
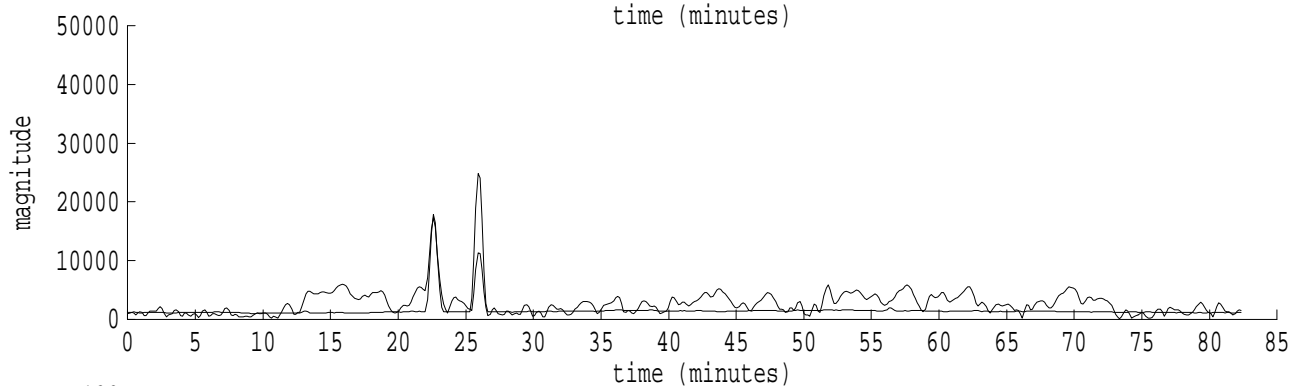
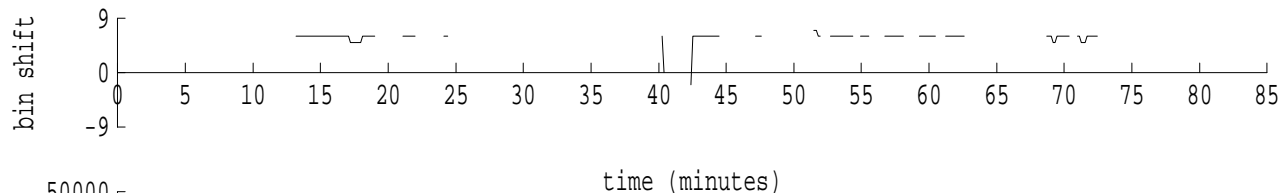
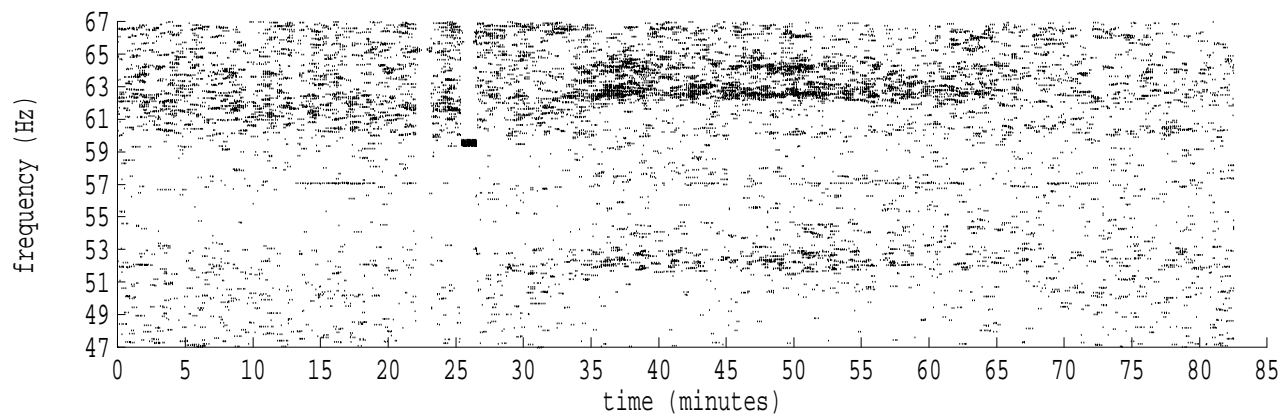
fft size: 16384  
overlap: 7/8  
sw\_hamm: 1  
sample rate: 228 Hz  
bin width: 0.0139 Hz  
int time: 71.86 sec  
bin freq: 56.875 Hz  
threshold: 2.50  
r\_max: 38576  
c rms: 2065  
n (rms): 16  
offset: -9  
pkr median: 22326  
ave median: 1025  
nor median: 1026  
sdv median: 1922  
n median: 547  
peak snr: 31.5 dB  
c snr: 6.1 dB  
sw\_line: 1  
sw\_theta: 1  
freq: 56.8764 Hz  
ship spd: -3.249 m/s  
-6.318 knts

Heard Island - Bermuda File b0301452.sam Ch. 7 Julian:030:14:52:16



fft size: 16384  
overlap: 7/8  
sw\_hamm: 1  
sample rate: 228 Hz  
bin width: 0.0139 Hz  
int time: 71.86 sec  
bin freq: 57.083 Hz  
threshold: 2.50  
r\_max: 46329  
c rms: 15674  
n (rms): 258  
offset: 6  
pkr median: 5303  
ave median: 1369  
nor median: 1106  
sdv median: 2612  
n median: 308  
peak snr: 32.4 dB  
c snr: 23.0 dB  
sw\_line: 1  
sw\_theta: 1  
freq: 57.0827 Hz  
ship spd: 2.173 m/s  
4.225 knts

Heard Island - Bermuda File b0301452.sam Ch. 8 Julian:030:14:52:16



fft size: 16384  
overlap: 7/8  
sw\_hamm: 1  
sample rate: 228 Hz  
bin width: 0.0139 Hz  
int time: 71.86 sec  
bin freq: 57.083 Hz  
threshold: 2.50  
r\_max: 29114  
c rms: 4476  
n (rms): 145  
offset: 6  
pkr median: 24811  
ave median: 1612  
nor median: 1677  
sdv median: 2364  
n median: 458  
peak snr: 24.8 dB  
c snr: 8.5 dB  
sw\_line: 1  
sw\_theta: 1  
freq: 57.0822 Hz  
ship spd: 2.159 m/s  
4.199 knts