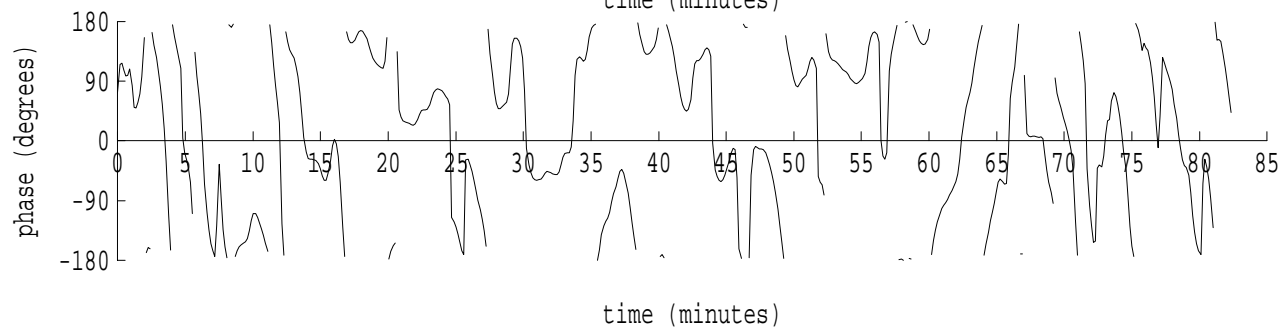
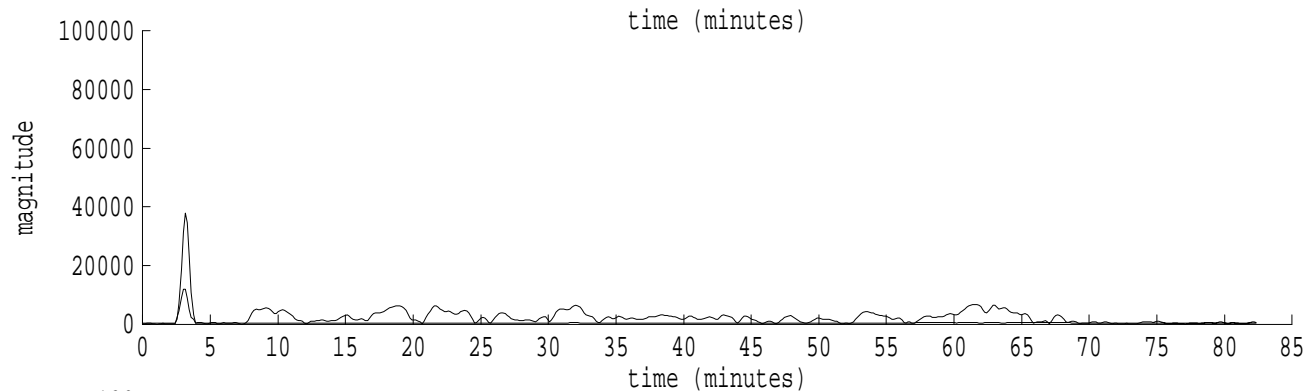
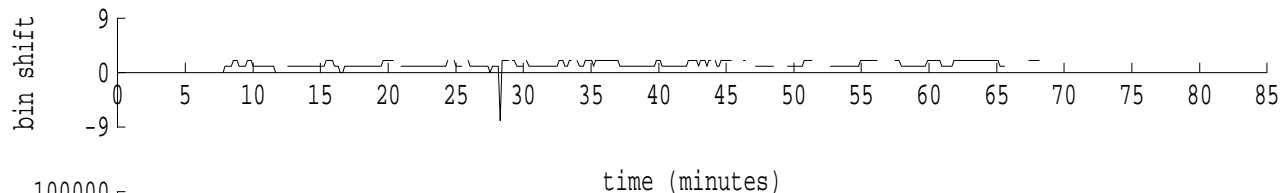
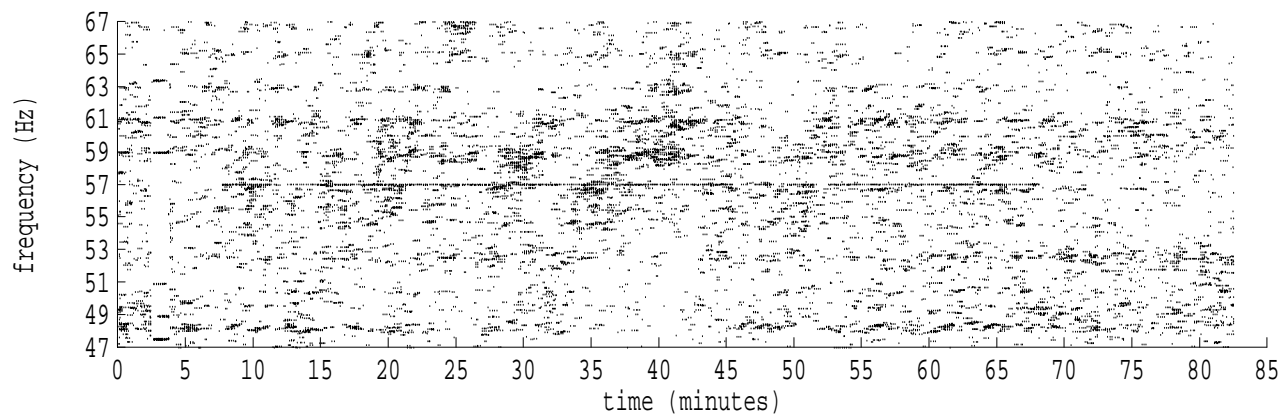
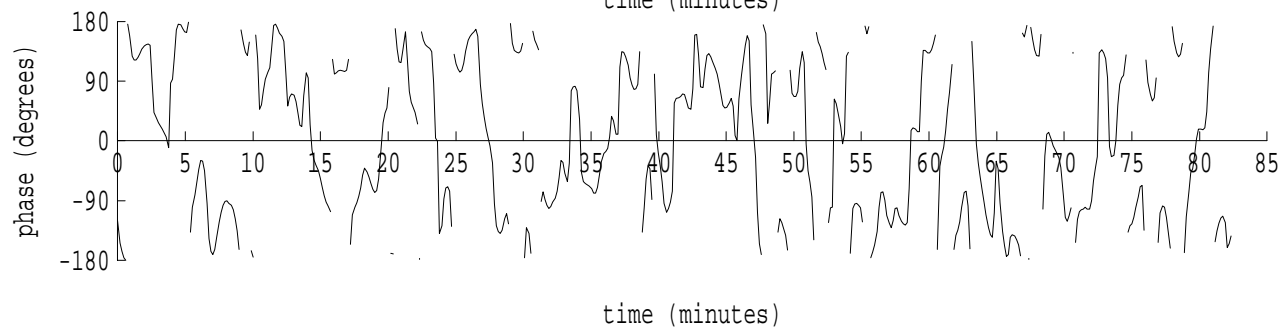
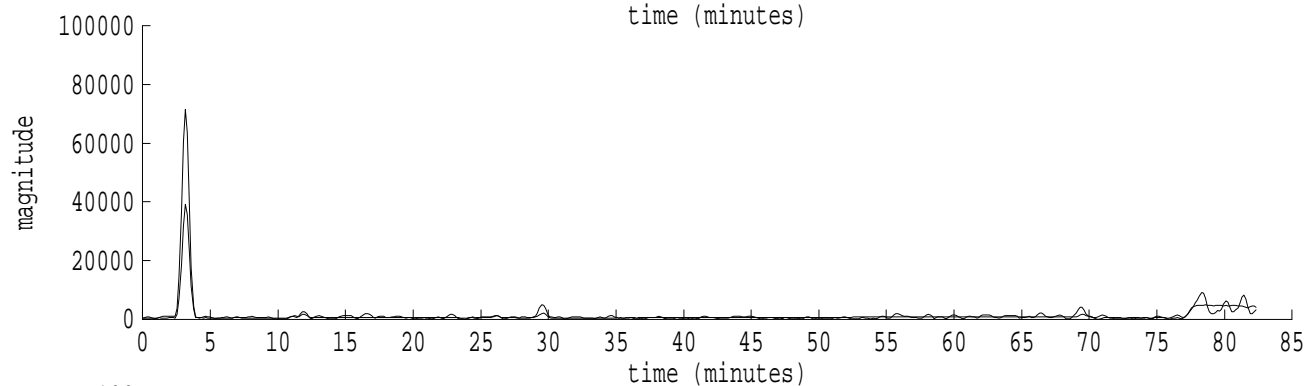
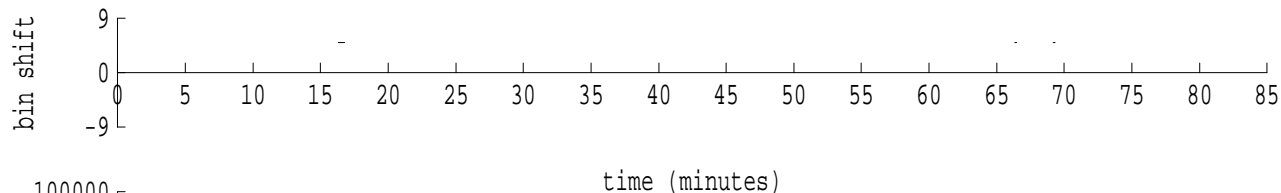
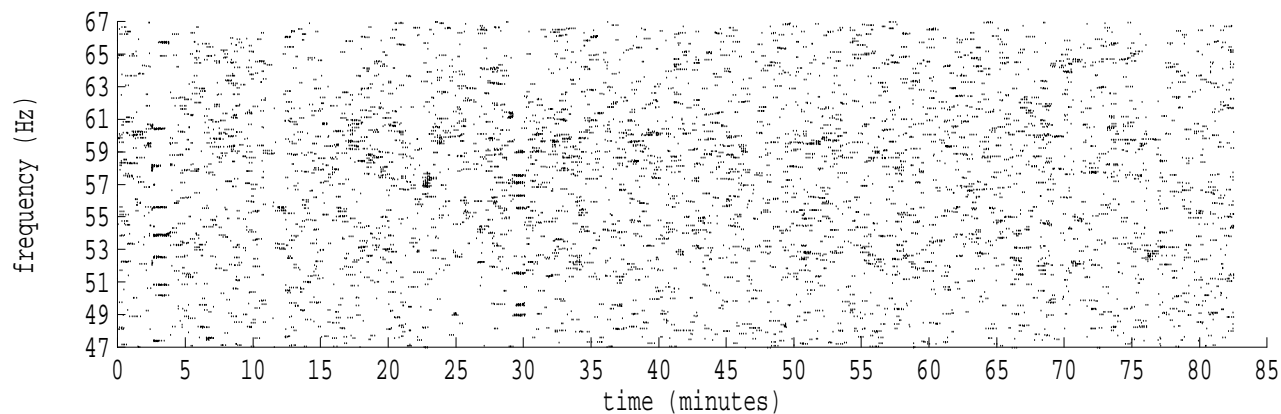


Heard Island - Bermuda File b0292052.sam Ch. 1 Julian:029:20:52:16



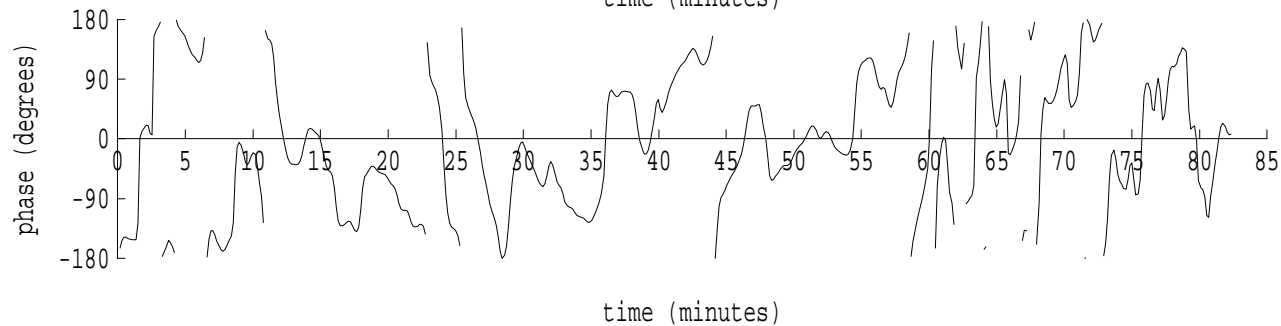
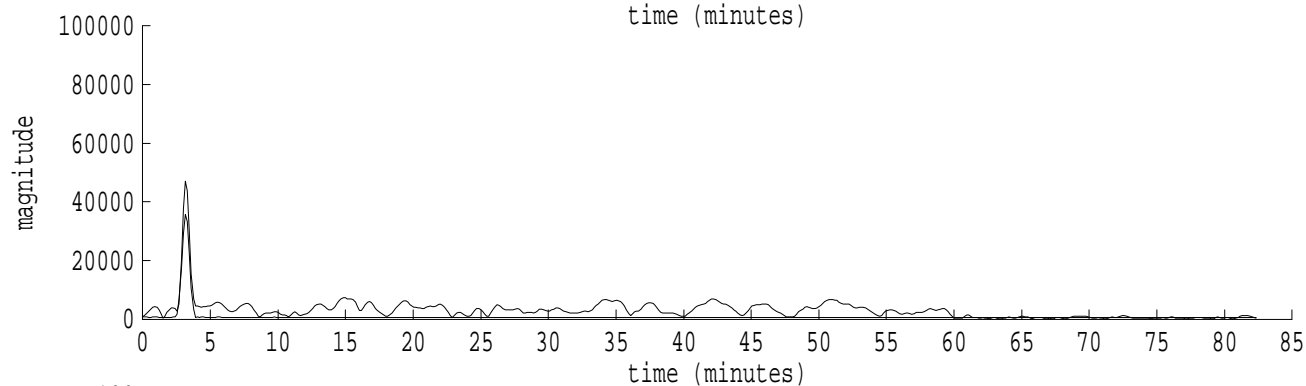
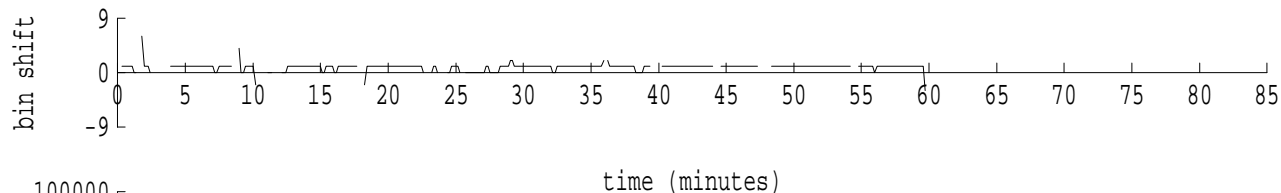
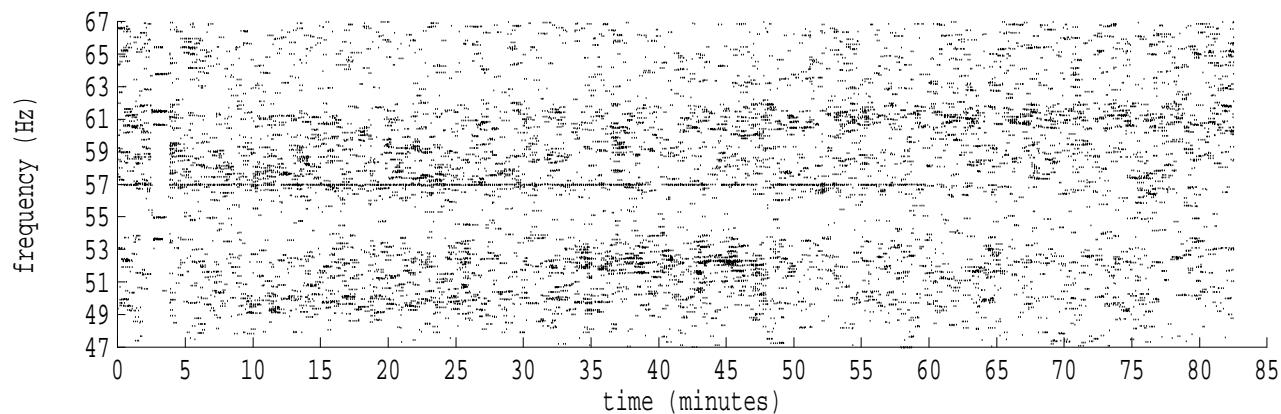
fft size: 16384  
overlap: 7/8  
sw\_hamm: 1  
sample rate: 228 Hz  
bin width: 0.0139 Hz  
int time: 71.86 sec  
bin freq: 57.014 Hz  
threshold: 2.50  
r\_max: 69755  
c rms: 3388  
n (rms): 345  
offset: 1  
pkr median: 37890  
ave median: 721  
nor median: 1147  
sdv median: 4450  
n median: 224  
peak snr: 35.7 dB  
c snr: 9.4 dB  
sw\_line: 1  
sw\_theta: 1  
freq: 57.0186 Hz  
ship spd: 0.489 m/s  
0.952 knts

Heard Island - Bermuda File b0292052.sam Ch. 2 Julian:029:20:52:16



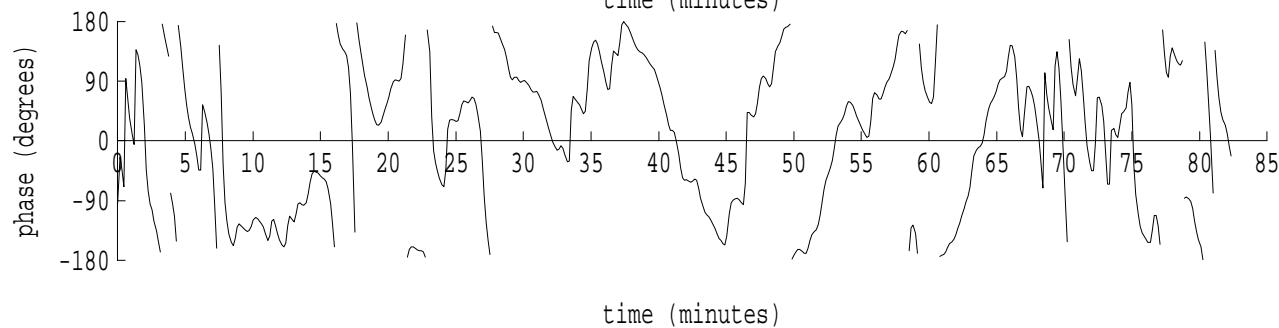
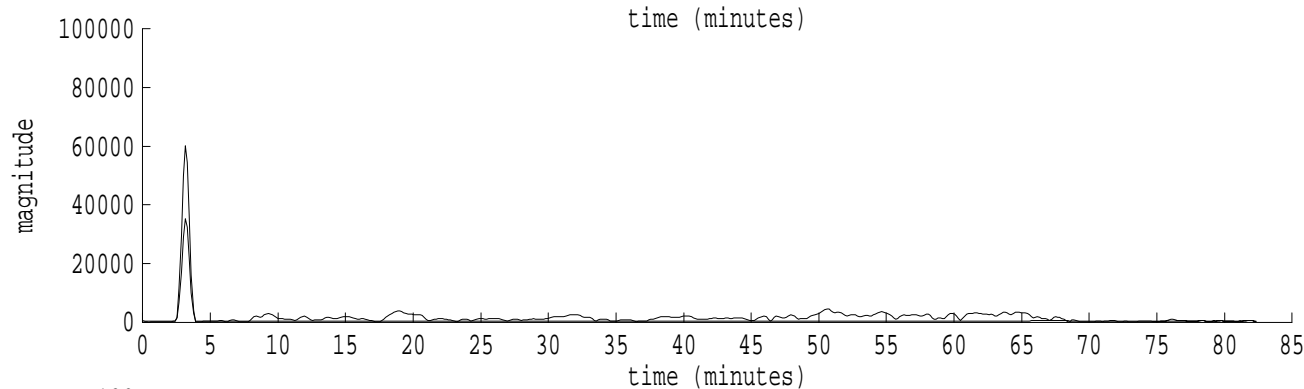
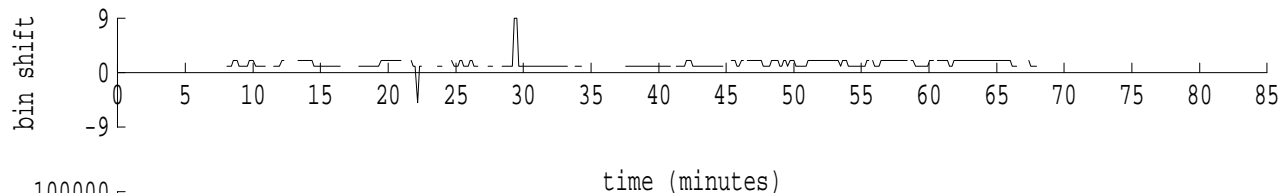
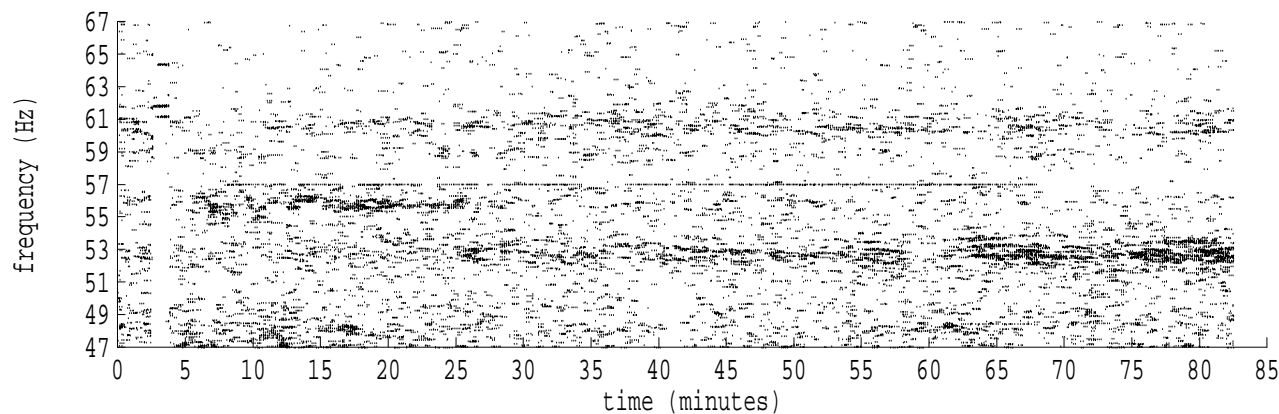
fft size: 16384  
overlap: 7/8  
sw\_hamm: 1  
sample rate: 228 Hz  
bin width: 0.0139 Hz  
int time: 71.86 sec  
bin freq: 57.070 Hz  
threshold: 2.50  
r\_max: 87832  
c rms: 2636  
n (rms): 11  
offset: 5  
pkr median: 39146  
ave median: 1184  
nor median: 1182  
sdv median: 3050  
n median: 548  
peak snr: 37.4 dB  
c snr: 7.0 dB  
sw\_line: 1  
sw\_theta: 1  
freq: 57.0704 Hz  
ship spd: 1.850 m/s  
3.597 knts

Heard Island - Bermuda File b0292052.sam Ch. 3 Julian:029:20:52:16

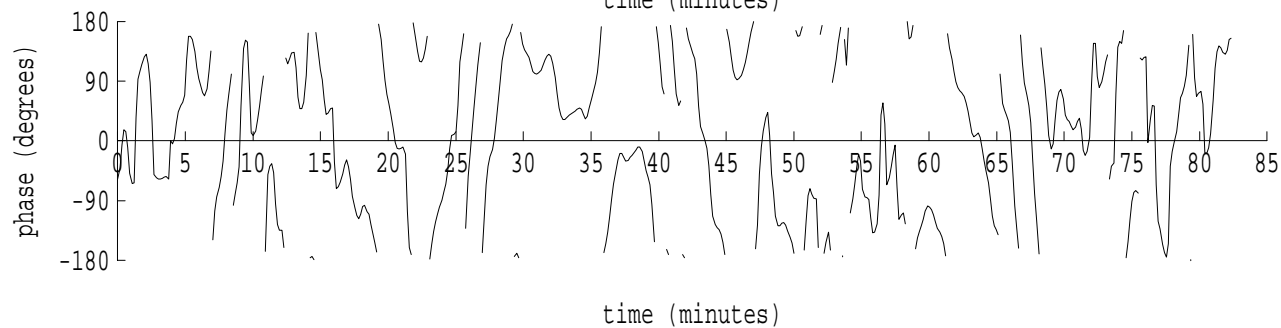
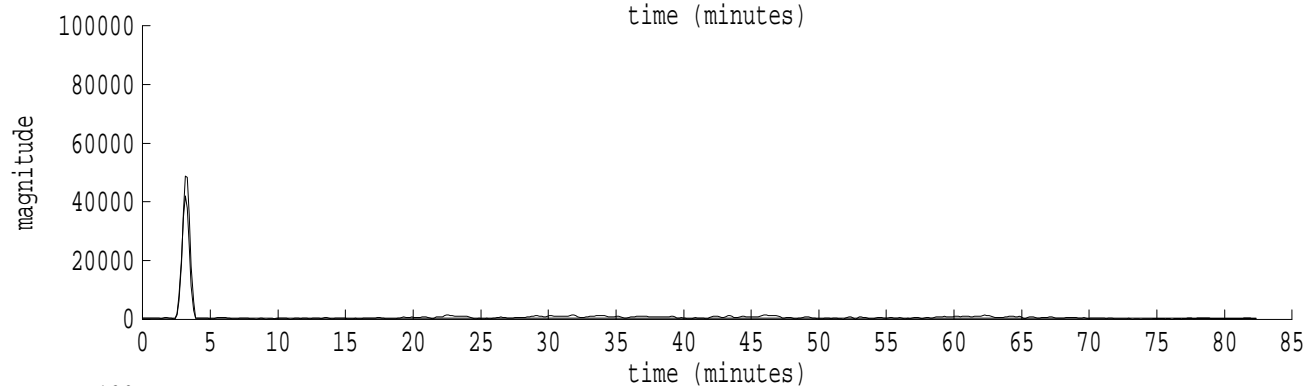
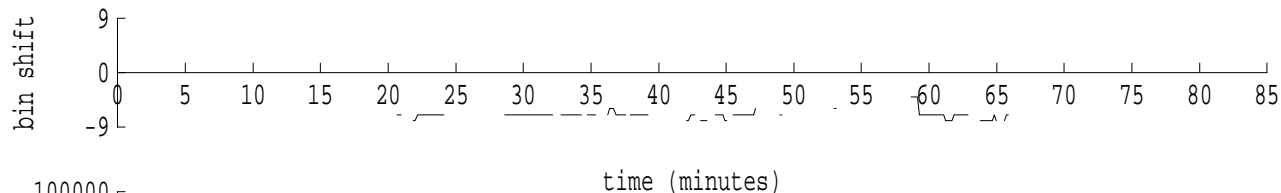
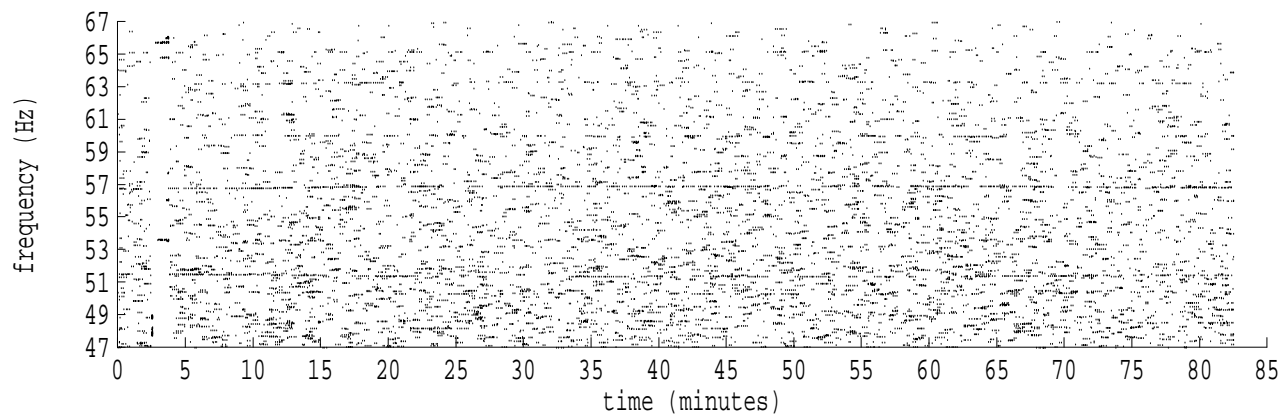


fft size: 16384  
overlap: 7/8  
sw\_hamm: 1  
sample rate: 228 Hz  
bin width: 0.0139 Hz  
int time: 71.86 sec  
bin freq: 57.014 Hz  
threshold: 2.50  
r\_max: 61203  
c rms: 4094  
n (rms): 345  
offset: 1  
pkr median: 35778  
ave median: 895  
nor median: 1281  
sdv median: 4214  
n median: 222  
peak snr: 33.6 dB  
c snr: 10.1 dB  
sw\_line: 1  
sw\_theta: 1  
freq: 57.0111 Hz  
ship spd: 0.293 m/s  
0.569 knts

Heard Island - Bermuda File b0292052.sam Ch. 4 Julian:029:20:52:16

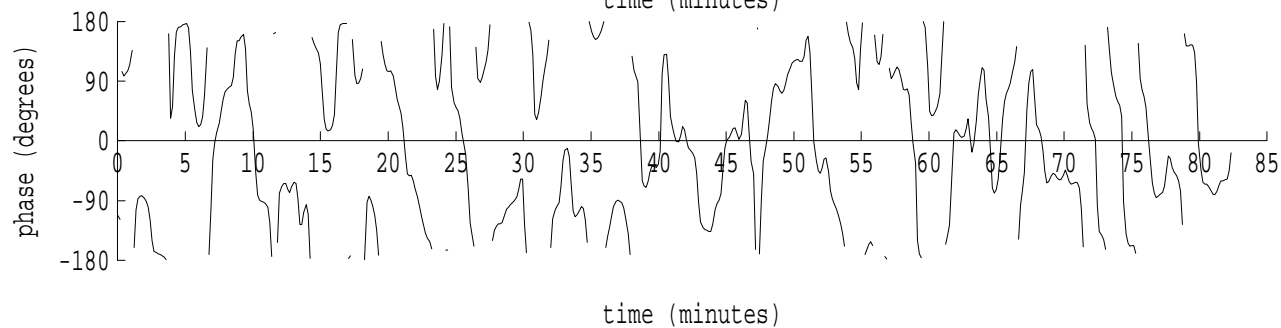
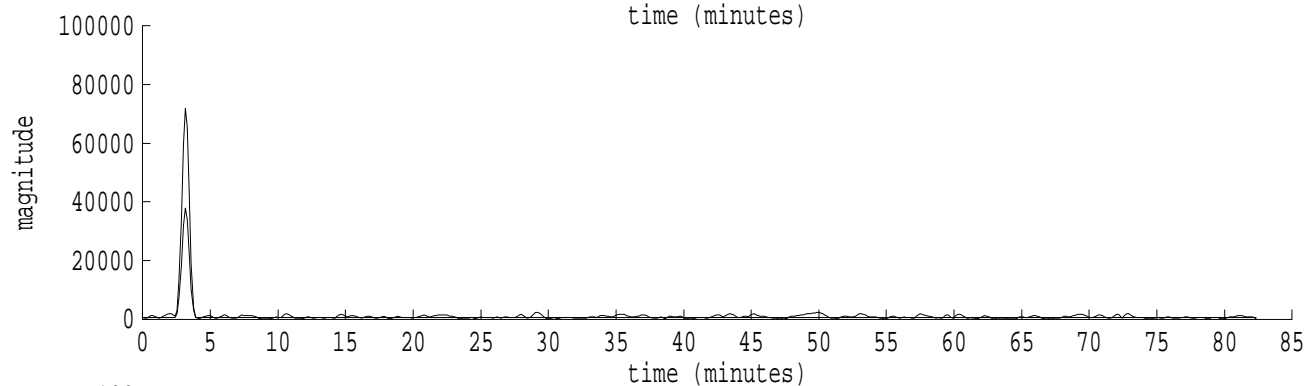
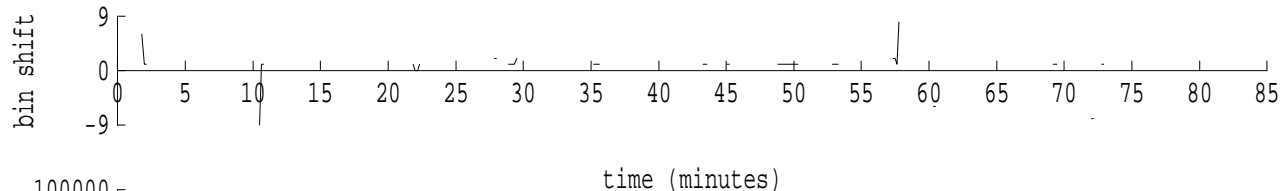
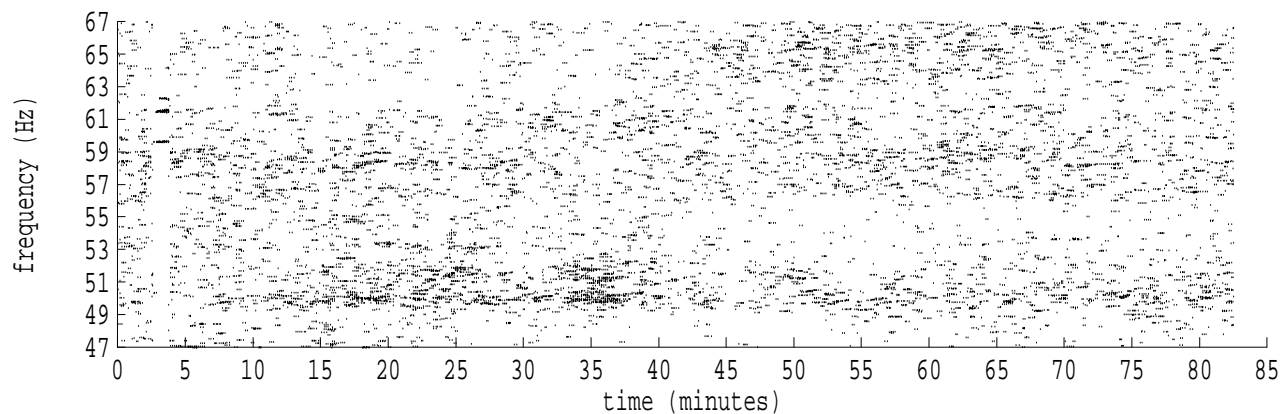


fft size: 16384  
overlap: 7/8  
sw\_hamm: 1  
sample rate: 228 Hz  
bin width: 0.0139 Hz  
int time: 71.86 sec  
bin freq: 57.014 Hz  
threshold: 2.50  
r\_max: 64169  
c rms: 2133  
n (rms): 323  
offset: 1  
pkr median: 35227  
ave median: 675  
nor median: 980  
sdv median: 3795  
n median: 267  
peak snr: 36.3 dB  
c snr: 6.8 dB  
sw\_line: 1  
sw\_theta: 1  
freq: 57.0195 Hz  
ship spd: 0.511 m/s  
0.994 knts



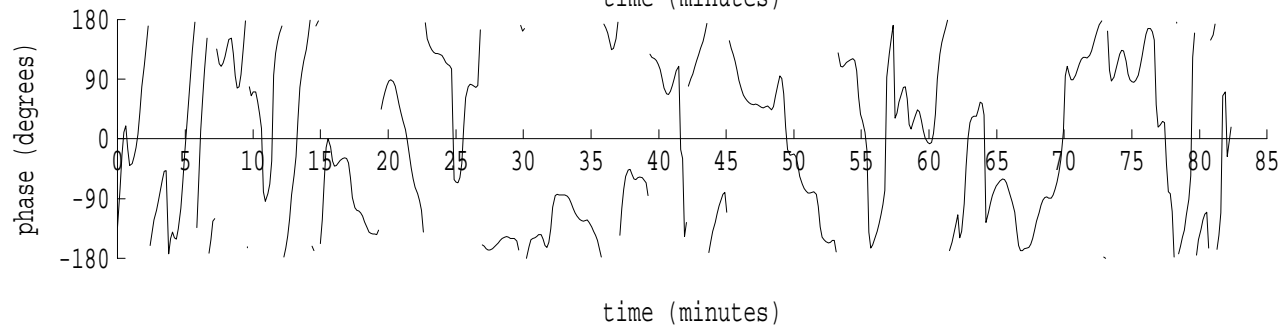
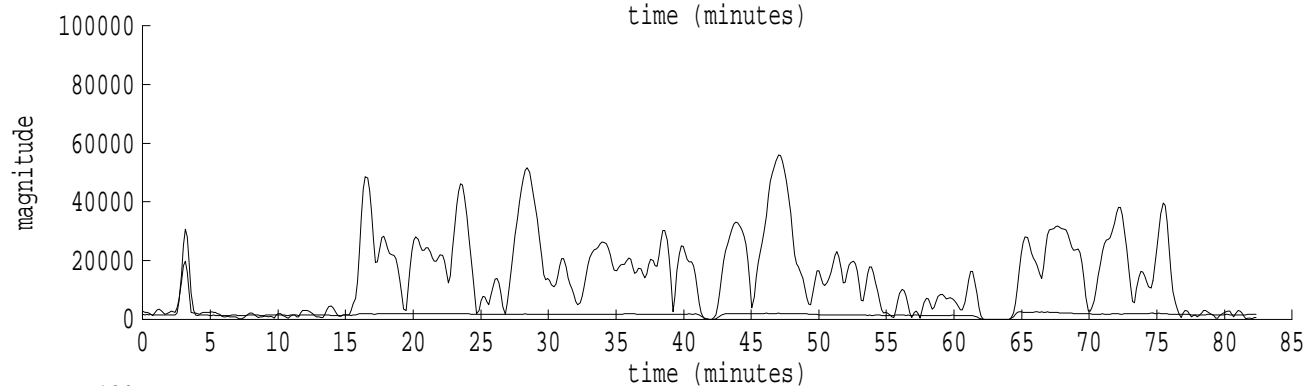
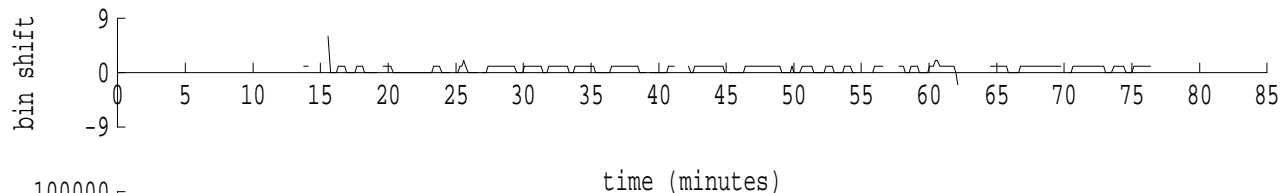
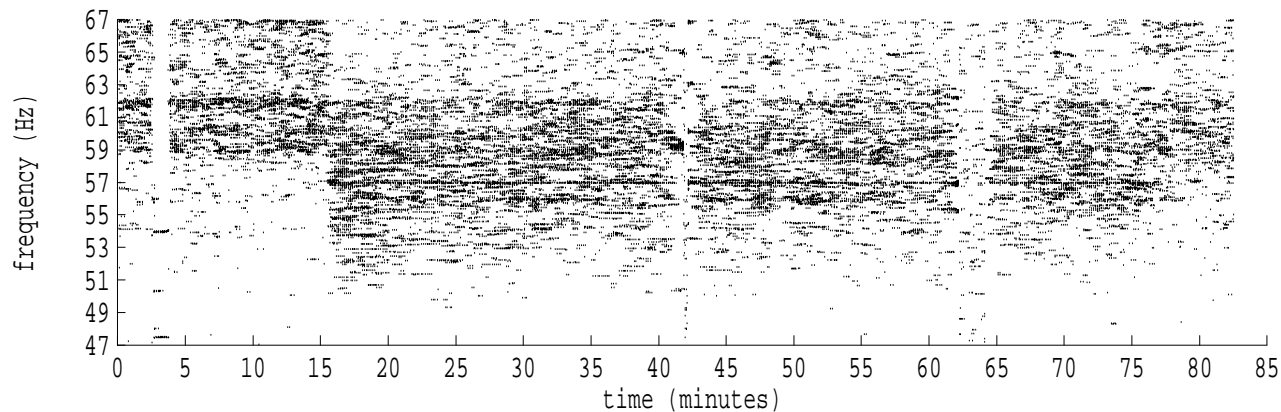
fft size: 16384  
overlap: 7/8  
sw\_hamm: 1  
sample rate: 228 Hz  
bin width: 0.0139 Hz  
int time: 71.86 sec  
bin freq: 56.903 Hz  
threshold: 2.50  
r\_max: 62708  
c rms: 1011  
n (rms): 155  
offset: -7  
pkr median: 42114  
ave median: 630  
nor median: 702  
sdv median: 3498  
n median: 451  
peak snr: 39.0 dB  
c snr: 3.2 dB  
sw\_line: 1  
sw\_theta: 1  
freq: 56.9014 Hz  
ship spd: -2.591 m/s  
-5.038 knts

Heard Island - Bermuda File b0292052.sam Ch. 6 Julian:029:20:52:16



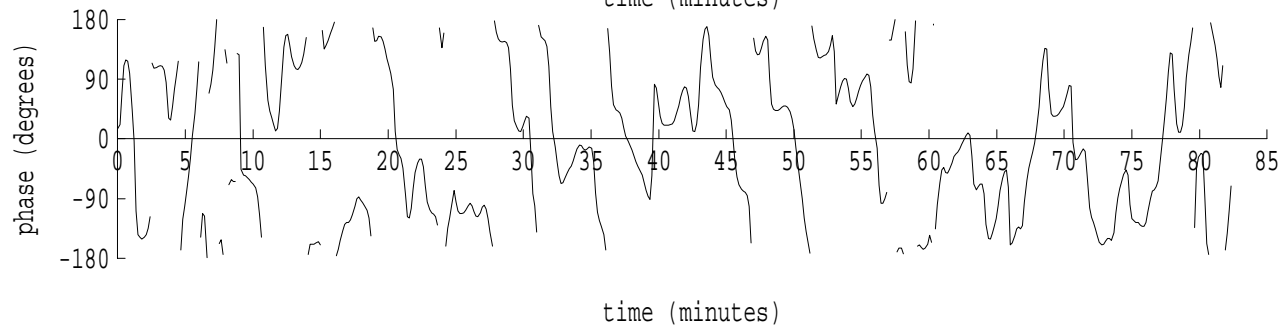
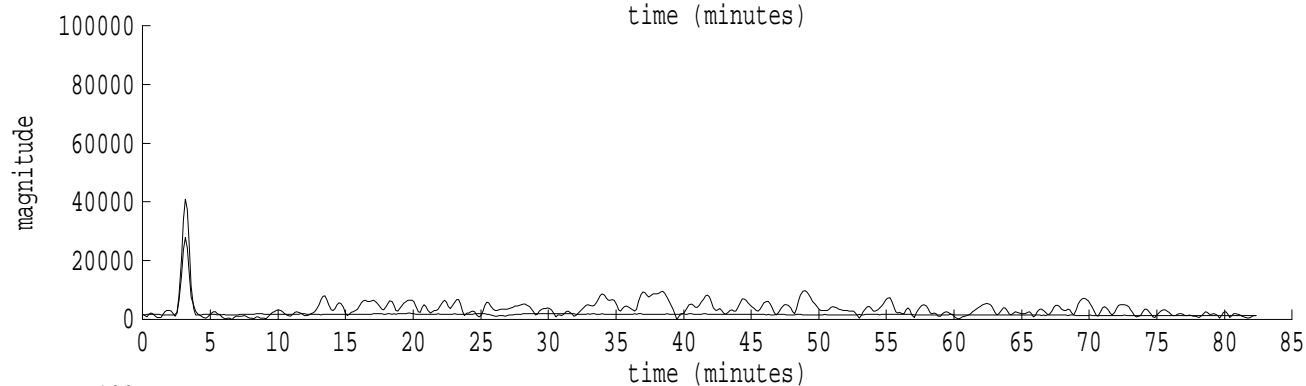
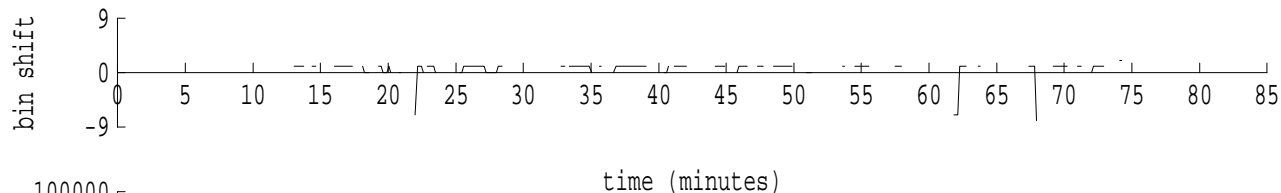
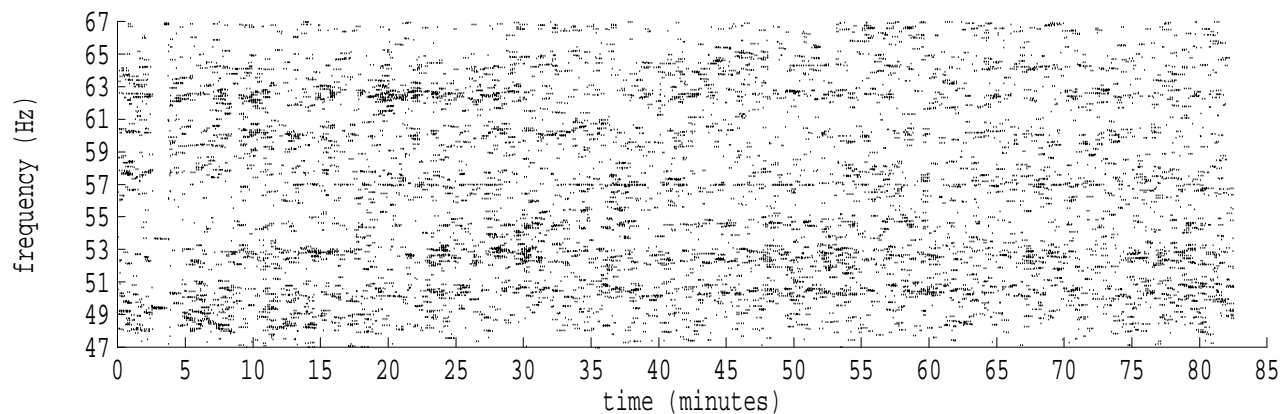
fft size: 16384  
overlap: 7/8  
sw\_hamm: 1  
sample rate: 228 Hz  
bin width: 0.0139 Hz  
int time: 71.86 sec  
bin freq: 57.014 Hz  
threshold: 2.50  
r\_max: 78353  
c rms: 1780  
n (rms): 59  
offset: 1  
pkr median: 37994  
ave median: 890  
nor median: 902  
sdv median: 2887  
n median: 528  
peak snr: 38.8 dB  
c snr: 5.9 dB  
sw\_line: 1  
sw\_theta: 1  
freq: 57.0140 Hz  
ship spd: 0.368 m/s  
0.715 knts

Heard Island - Bermuda File b0292052.sam Ch. 7 Julian:029:20:52:16



fft size: 16384  
overlap: 7/8  
sw\_hamm: 1  
sample rate: 228 Hz  
bin width: 0.0139 Hz  
int time: 71.86 sec  
bin freq: 57.014 Hz  
threshold: 2.50  
r\_max: 60650  
c rms: 23296  
n (rms): 364  
offset: 1  
pkr median: 30772  
ave median: 1831  
nor median: 1967  
sdv median: 3702  
n median: 197  
peak snr: 29.8 dB  
c snr: 21.5 dB  
sw\_line: 1  
sw\_theta: 1  
freq: 57.0089 Hz  
ship spd: 0.233 m/s  
0.454 knts

Heard Island - Bermuda File b0292052.sam Ch. 8 Julian:029:20:52:16



fft size: 16384  
overlap: 7/8  
sw\_hamm: 1  
sample rate: 228 Hz  
bin width: 0.0139 Hz  
int time: 71.86 sec  
bin freq: 57.014 Hz  
threshold: 2.50  
r\_max: 50200  
c rms: 5849  
n (rms): 188  
offset: 1  
pkr median: 41049  
ave median: 1902  
nor median: 1968  
sdv median: 3361  
n median: 436  
peak snr: 28.1 dB  
c snr: 9.5 dB  
sw\_line: 1  
sw\_theta: 1  
freq: 57.0121 Hz  
ship spd: 0.319 m/s  
0.620 knts