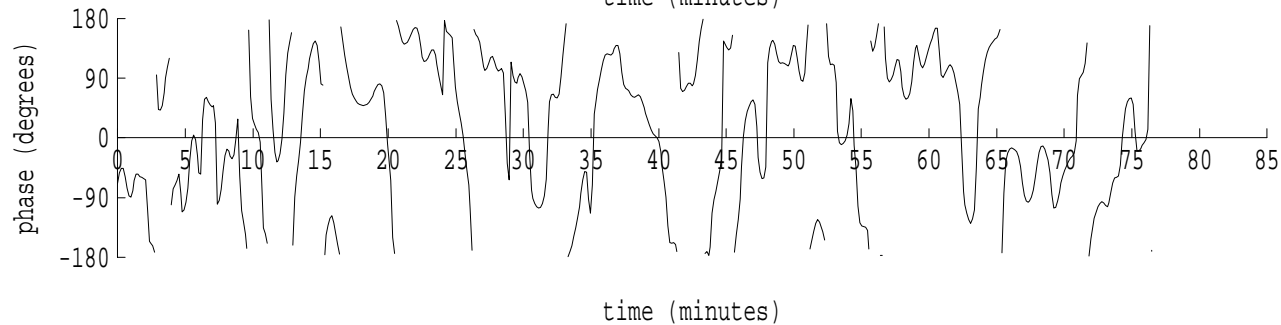
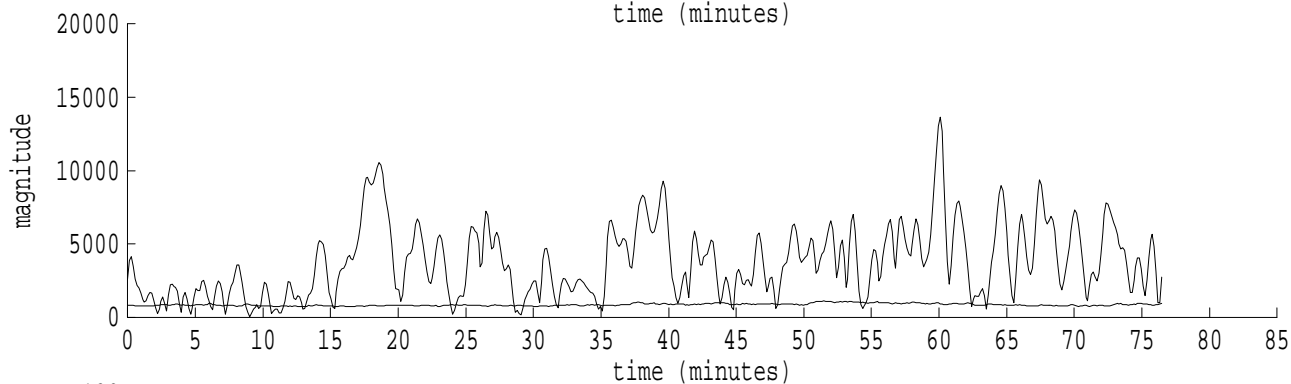
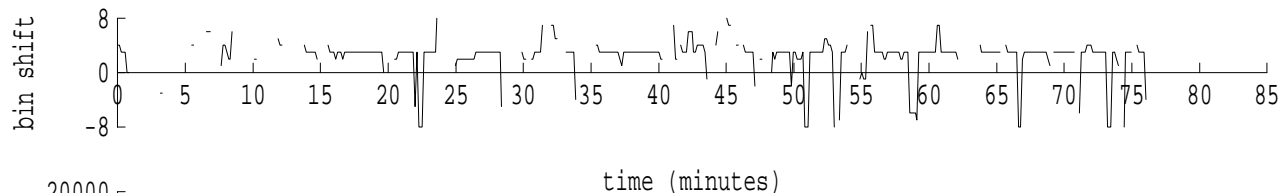
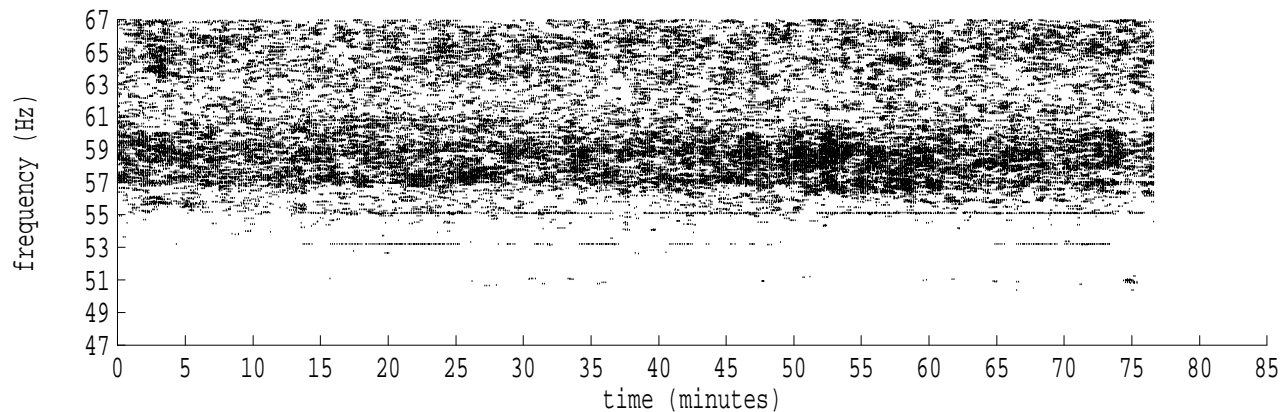
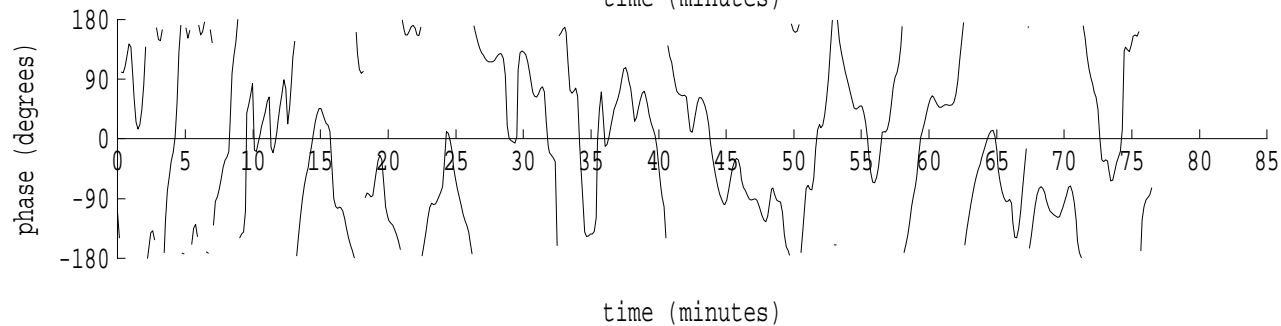
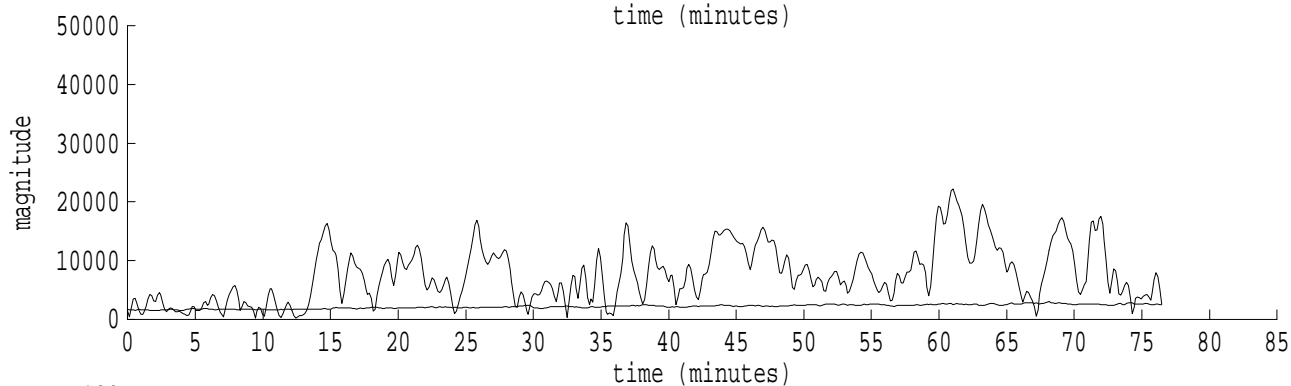
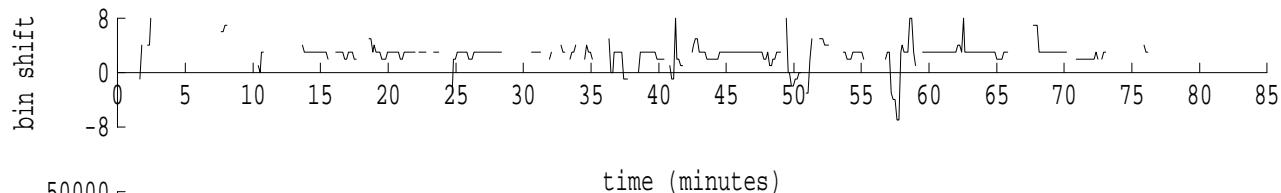
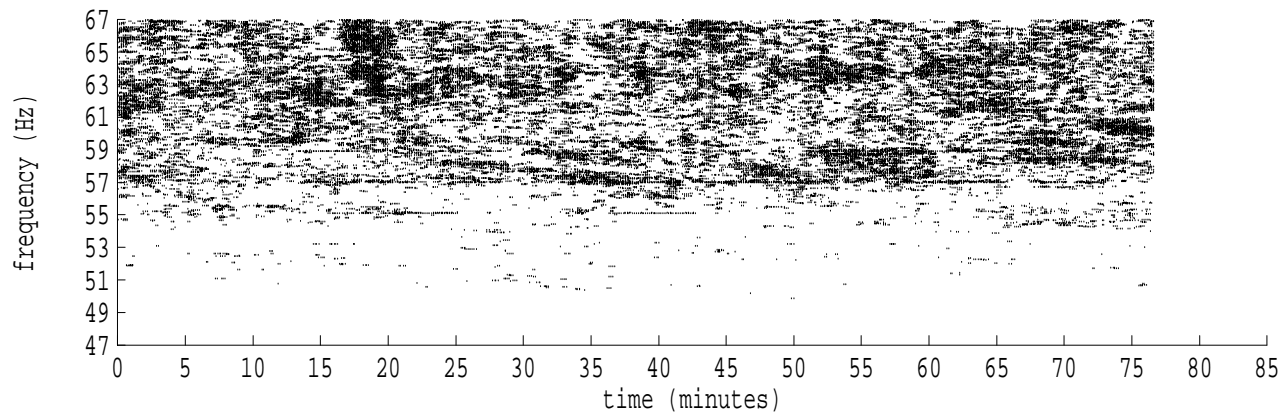


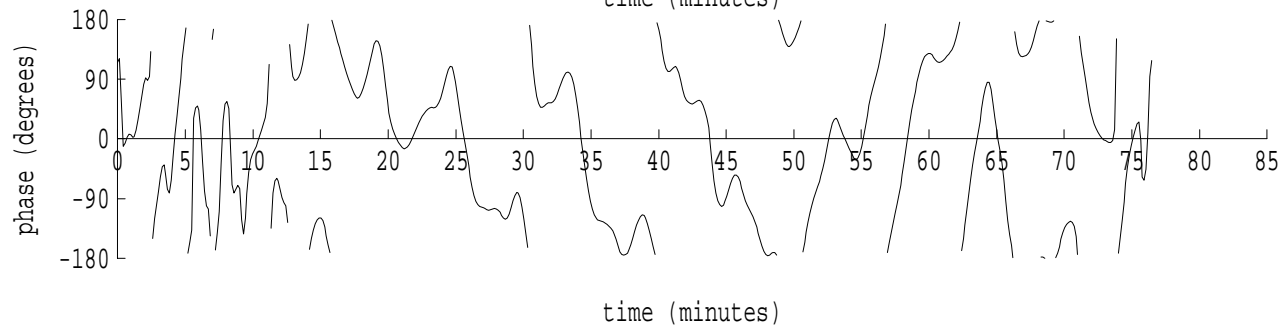
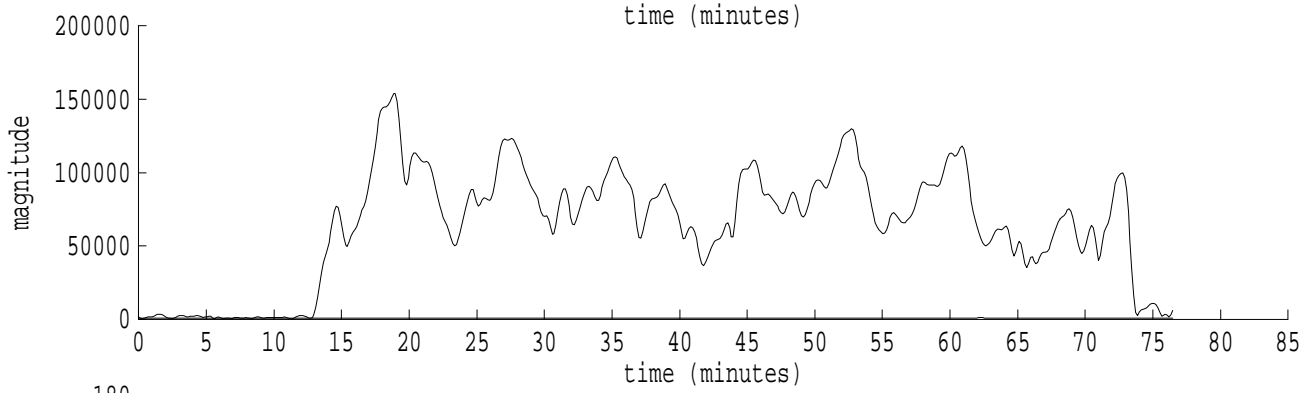
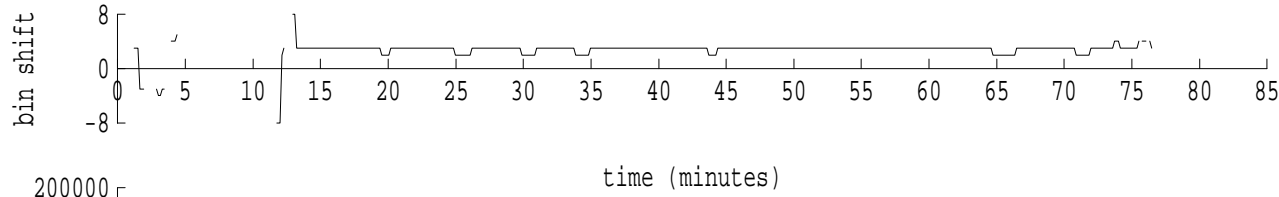
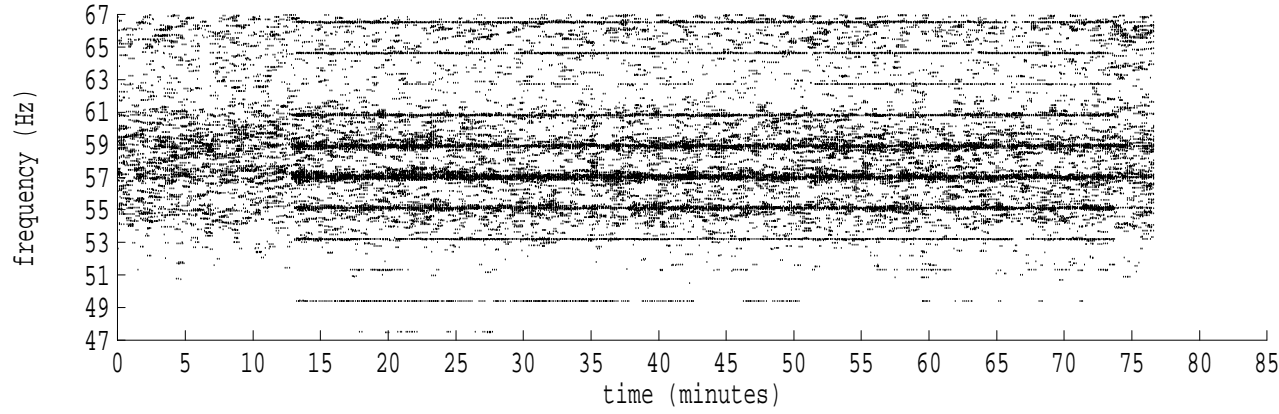
fft size: 16384  
overlap: 7/8  
sw\_hamm: 1  
sample rate: 250 Hz  
bin width: 0.0153 Hz  
int time: 65.54 sec  
bin freq: 57.053 Hz  
threshold: 2.50  
r\_max: 9865  
c rms: 5629  
n (rms): 305  
offset: 3  
pkr median: 1235  
ave median: 1224  
nor median: 1218  
sdv median: 112  
n median: 323  
peak snr: 18.2 dB  
c snr: 13.3 dB  
sw\_line: 1  
sw\_theta: 1  
freq: 57.0529 Hz  
ship spd: 1.391 m/s  
2.704 knts



fft size: 16384  
overlap: 7/8  
sw\_hamm: 1  
sample rate: 250 Hz  
bin width: 0.0153 Hz  
int time: 65.54 sec  
bin freq: 57.053 Hz  
threshold: 2.50  
r\_max: 13651  
c rms: 5314  
n (rms): 382  
offset: 3  
pkr median: 918  
ave median: 857  
nor median: 844  
sdv median: 75  
n median: 219  
peak snr: 24.2 dB  
c snr: 16.0 dB  
sw\_line: 1  
sw\_theta: 1  
freq: 57.0521 Hz  
ship spd: 1.368 m/s  
2.660 knts

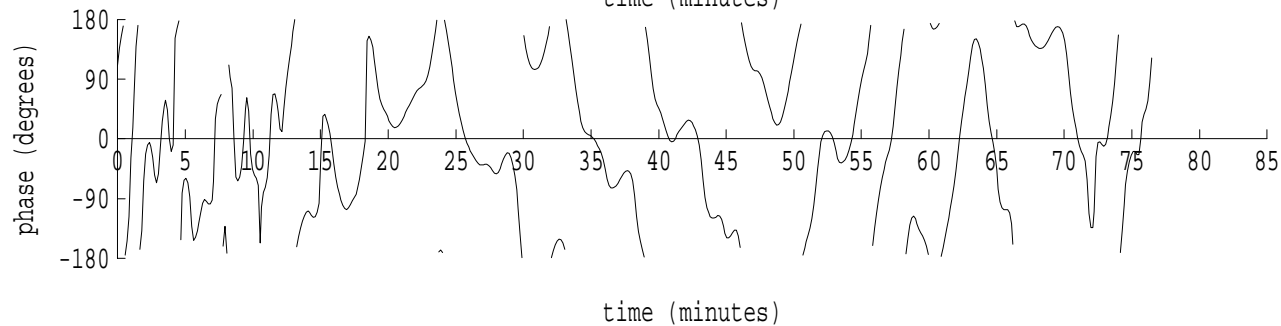
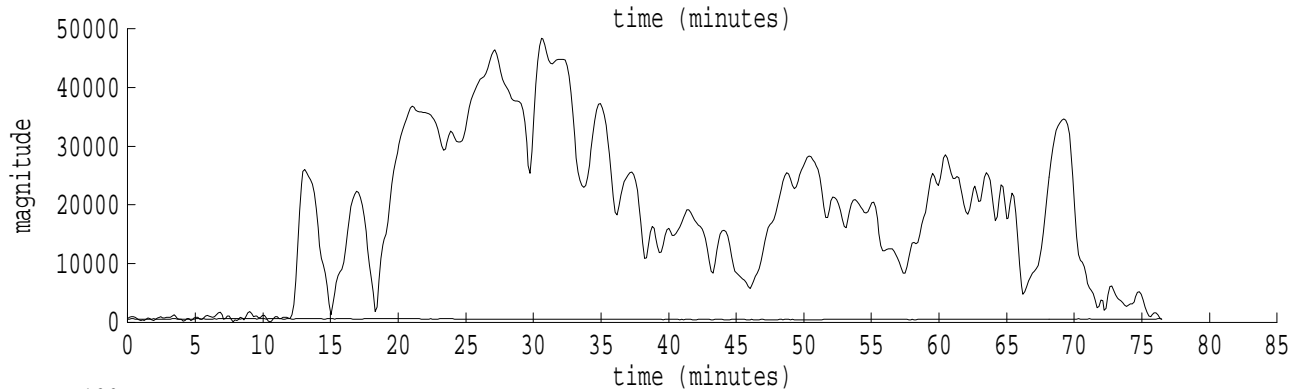
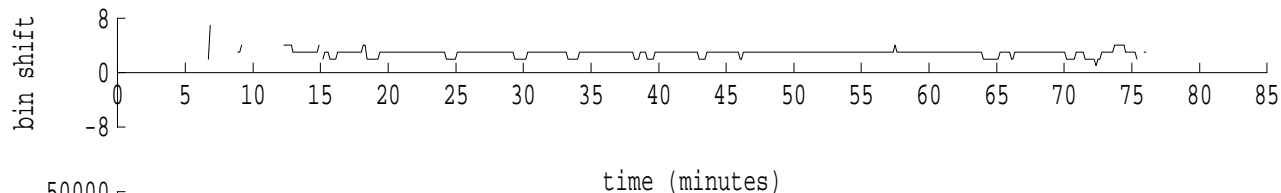
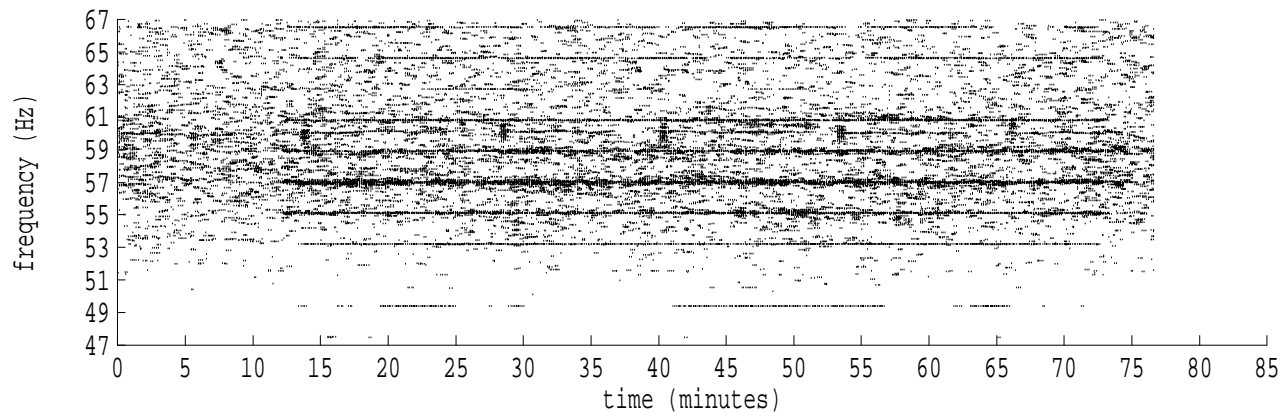


fft size: 16384  
overlap: 7/8  
sw\_hamm: 1  
sample rate: 250 Hz  
bin width: 0.0153 Hz  
int time: 65.54 sec  
bin freq: 57.053 Hz  
threshold: 2.50  
r\_max: 22193  
c rms: 11060  
n (rms): 342  
offset: 3  
pkr median: 2527  
ave median: 2188  
nor median: 2105  
sdv median: 385  
n median: 277  
peak snr: 20.5 dB  
c snr: 14.4 dB  
sw\_line: 1  
sw\_theta: 1  
freq: 57.0504 Hz  
ship spd: 1.325 m/s  
2.576 knts



fft size: 16384  
overlap: 7/8  
sw\_hamm: 1  
sample rate: 250 Hz  
bin width: 0.0153 Hz  
int time: 65.54 sec  
bin freq: 57.053 Hz  
threshold: 2.50  
r\_max: 153893  
c rms: 80426  
n (rms): 485  
offset: 3  
pkr median: 843  
ave median: 843  
nor median: 798  
sdv median: 48  
n median: 88  
peak snr: 45.7 dB  
c snr: 40.1 dB  
sw\_line: 1  
sw\_theta: 1  
freq: 57.0502 Hz  
ship spd: 1.319 m/s  
2.565 knts

Heard Island - Ascension (PAFB2) File: run6r3.sam Ch. 6 Julian:339:09:56:17



fft size: 16384  
overlap: 7/8  
sw\_hamm: 1  
sample rate: 250 Hz  
bin width: 0.0153 Hz  
int time: 65.54 sec  
bin freq: 57.053 Hz  
threshold: 2.50  
r\_max: 48415  
c rms: 24052  
n (rms): 469  
offset: 3  
pkr median: 490  
ave median: 530  
nor median: 573  
sdv median: 25  
n median: 98  
peak snr: 38.5 dB  
c snr: 32.5 dB  
sw\_line: 1  
sw\_theta: 1  
freq: 57.0508 Hz  
ship spd: 1.336 m/s  
2.598 knts