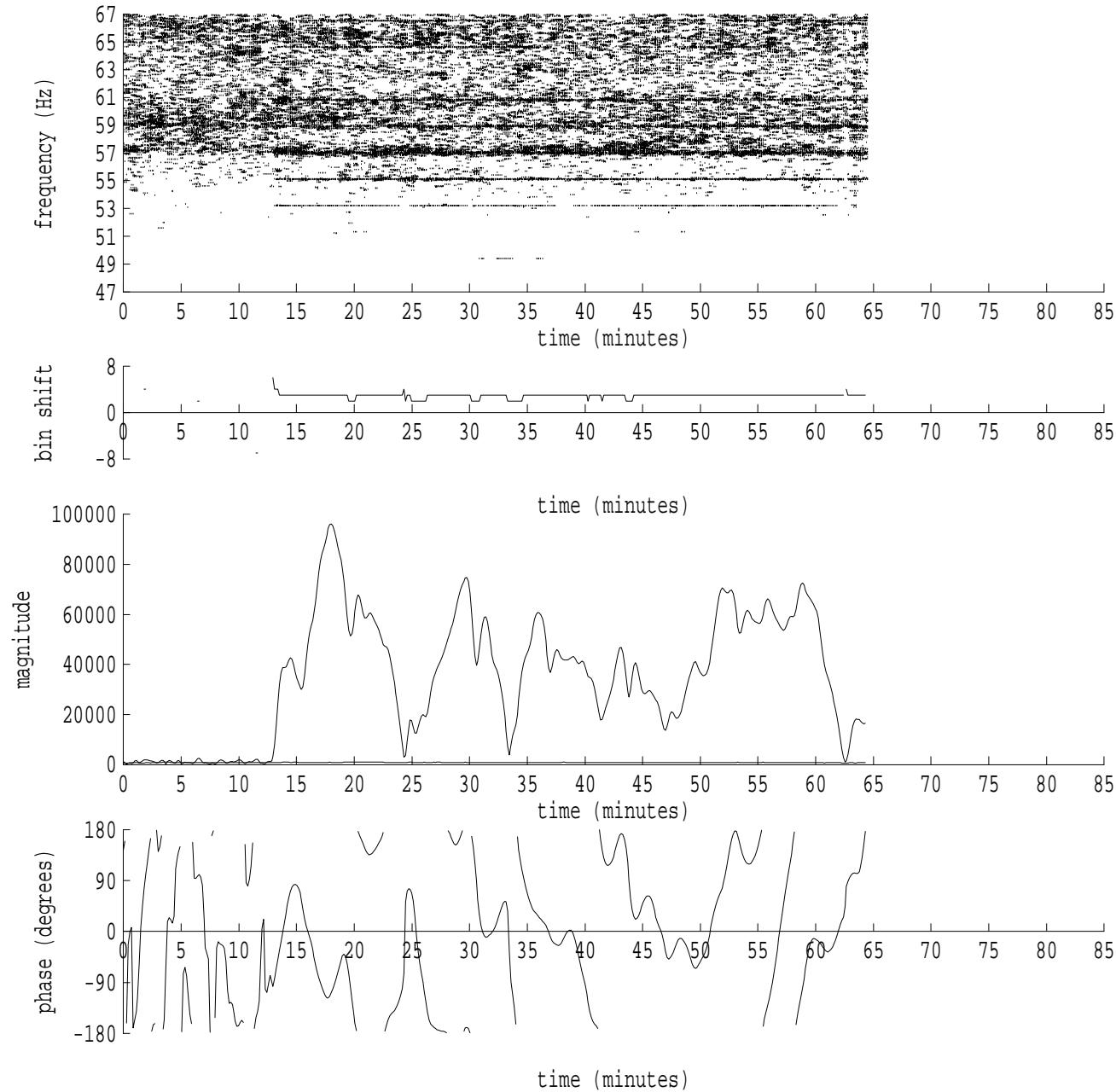
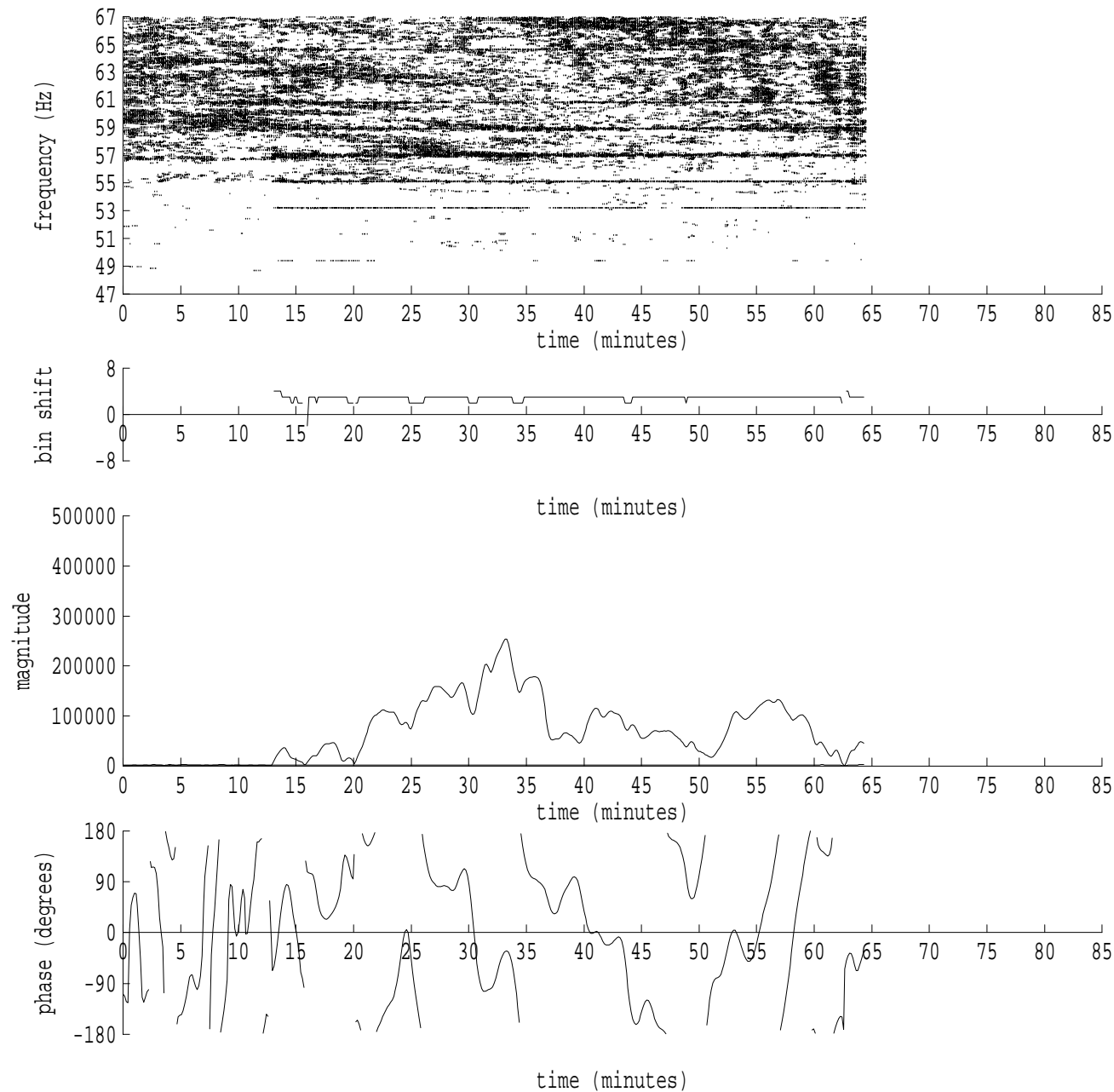


fft size: 16384
overlap: 7/8
sw_hamm: 1
sample rate: 250 Hz
bin width: 0.0153 Hz
int time: 65.54 sec
bin freq: 57.053 Hz
threshold: 2.50
r_max: 132652
c rms: 72900
n (rms): 376
offset: 3
pkr median: 470
ave median: 512
nor median: 454
sdv median: 82
n median: 97
peak snr: 49.3 dB
c snr: 44.1 dB
sw_line: 1
sw_theta: 1
freq: 57.0506 Hz
ship spd: 1.329 m/s
2.585 knts

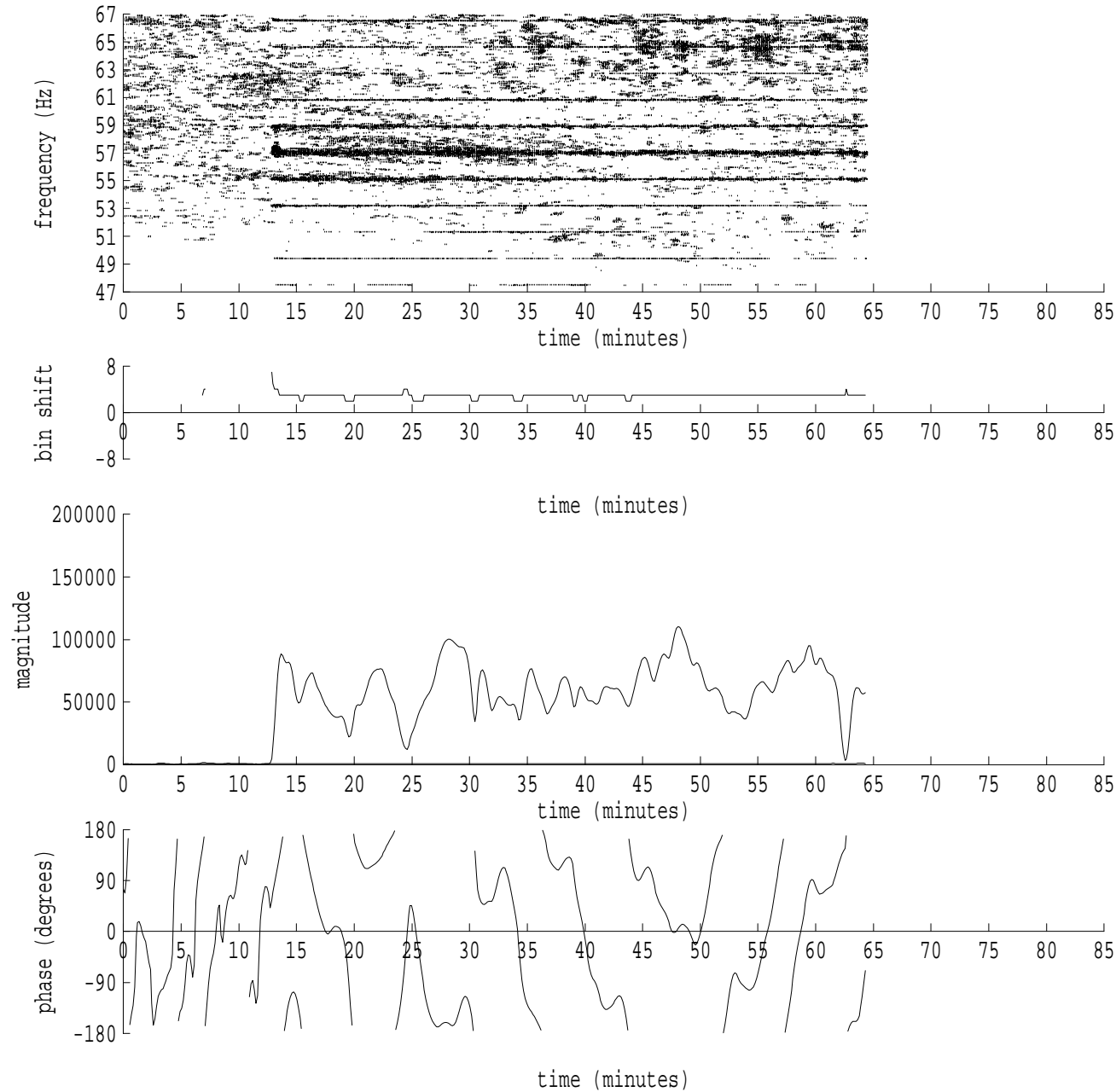
Heard Island - Ascension (PAFB2) File: run6r1.sam Ch. 3 Julian:335:07:25:02



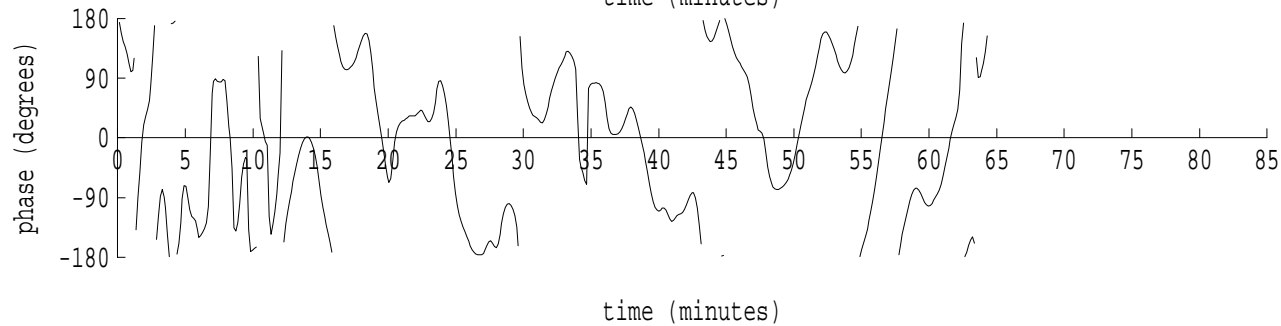
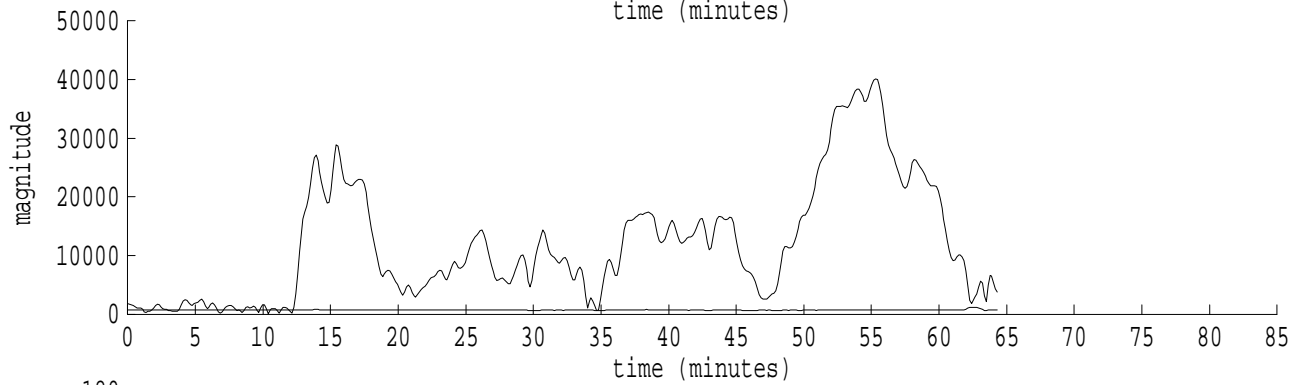
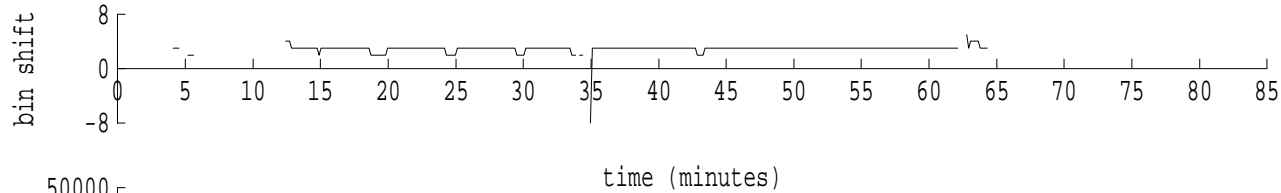
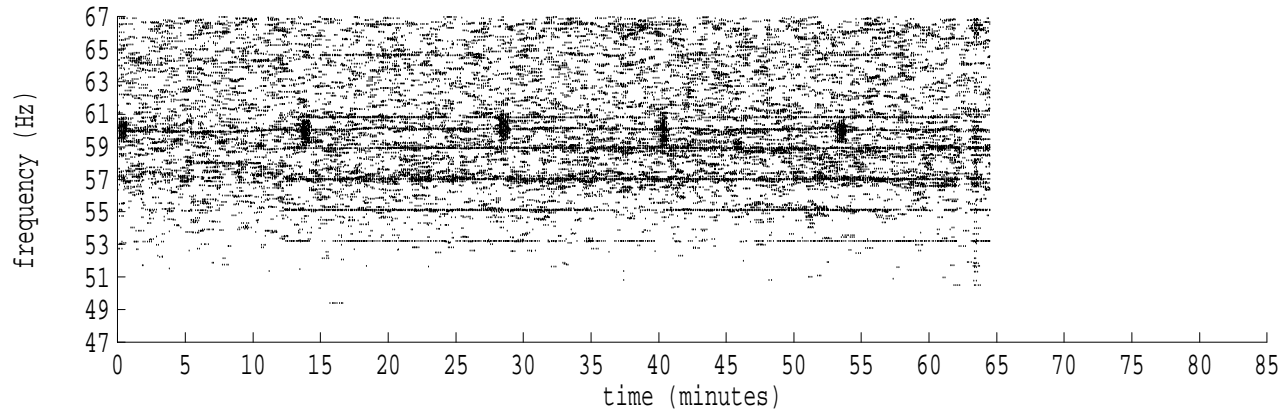
fft size: 16384
overlap: 7/8
sw_hamm: 1
sample rate: 250 Hz
bin width: 0.0153 Hz
int time: 65.54 sec
bin freq: 57.053 Hz
threshold: 2.50
r_max: 96178
c rms: 47503
n (rms): 382
offset: 3
pkr median: 920
ave median: 846
nor median: 788
sdv median: 69
n median: 97
peak snr: 41.7 dB
c snr: 35.6 dB
sw_line: 1
sw_theta: 1
freq: 57.0504 Hz
ship spd: 1.326 m/s
2.578 knts



fft size: 16384
overlap: 7/8
sw_hamm: 1
sample rate: 250 Hz
bin width: 0.0153 Hz
int time: 65.54 sec
bin freq: 57.053 Hz
threshold: 2.50
r_max: 254119
c rms: 103081
n (rms): 371
offset: 3
pkr median: 1782
ave median: 1898
nor median: 1580
sdv median: 125
n median: 101
peak snr: 44.1 dB
c snr: 36.3 dB
sw_line: 1
sw_theta: 1
freq: 57.0508 Hz
ship spd: 1.336 m/s
2.597 knts



fft size: 16384
overlap: 7/8
sw_hamm: 1
sample rate: 250 Hz
bin width: 0.0153 Hz
int time: 65.54 sec
bin freq: 57.053 Hz
threshold: 2.50
r_max: 110338
c rms: 64383
n (rms): 381
offset: 3
pkr median: 809
ave median: 720
nor median: 563
sdv median: 47
n median: 94
peak snr: 45.8 dB
c snr: 41.2 dB
sw_line: 1
sw_theta: 1
freq: 57.0509 Hz
ship spd: 1.337 m/s
2.601 knts



fft size: 16384
overlap: 7/8
sw_hamm: 1
sample rate: 250 Hz
bin width: 0.0153 Hz
int time: 65.54 sec
bin freq: 57.053 Hz
threshold: 2.50
r_max: 40180
c rms: 17271
n (rms): 382
offset: 3
pkr median: 744
ave median: 732
nor median: 755
sdv median: 105
n median: 95
peak snr: 34.5 dB
c snr: 27.2 dB
sw_line: 1
sw_theta: 1
freq: 57.0515 Hz
ship spd: 1.352 m/s
2.629 knts