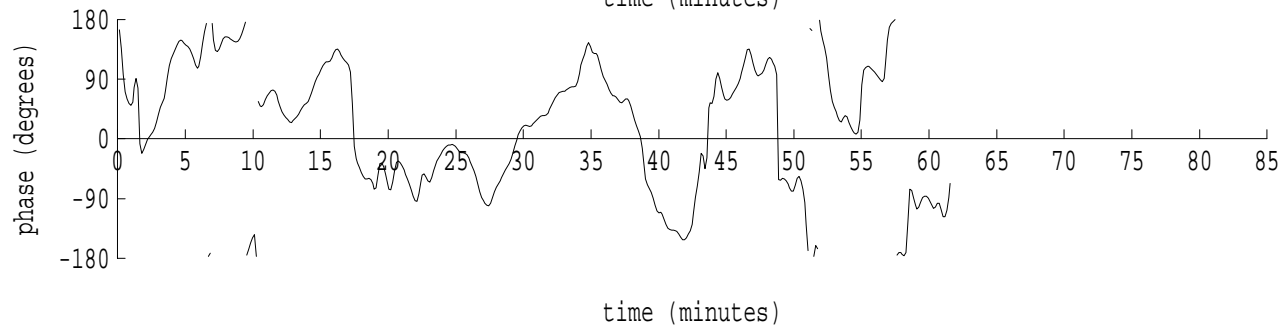
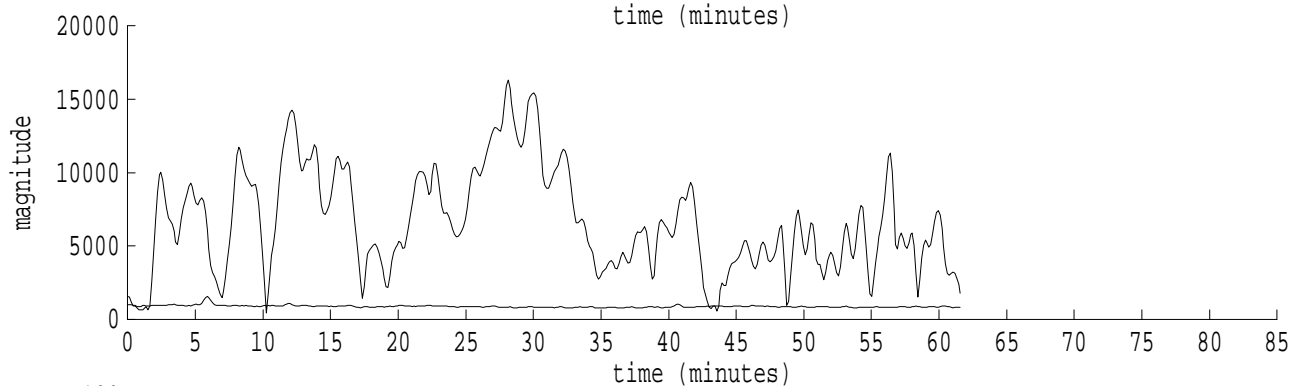
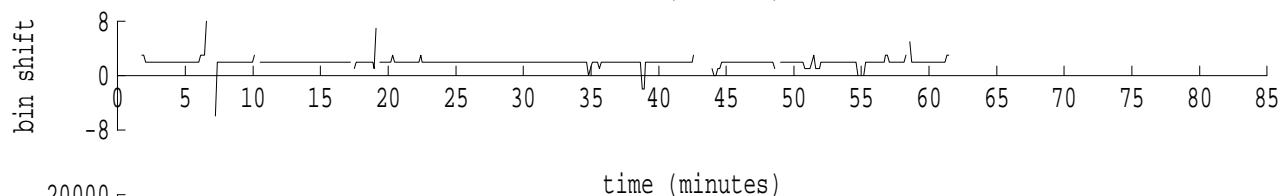
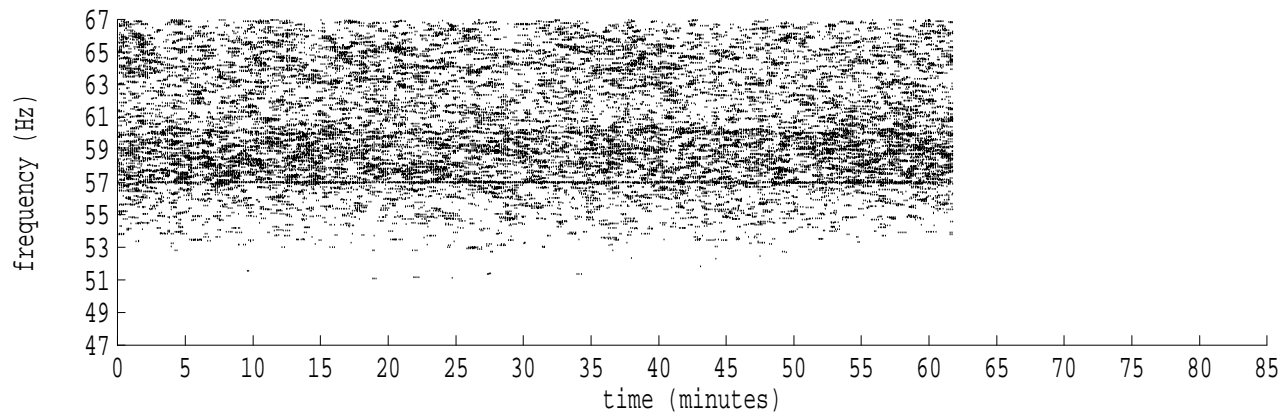
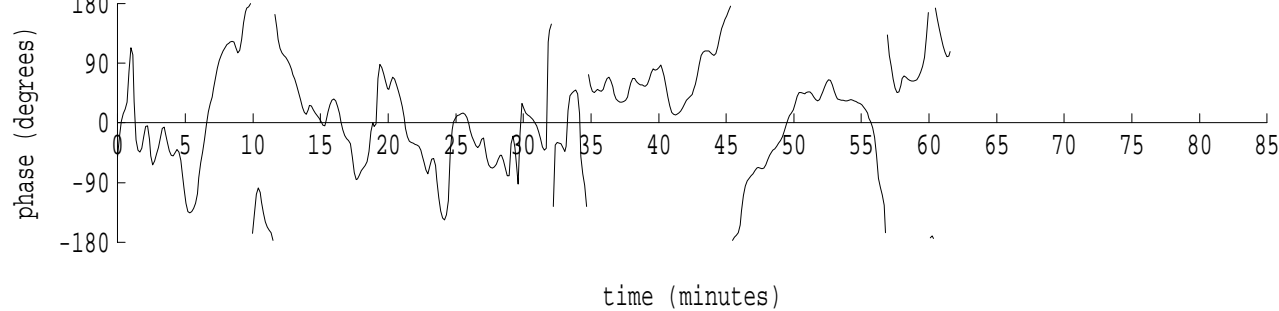
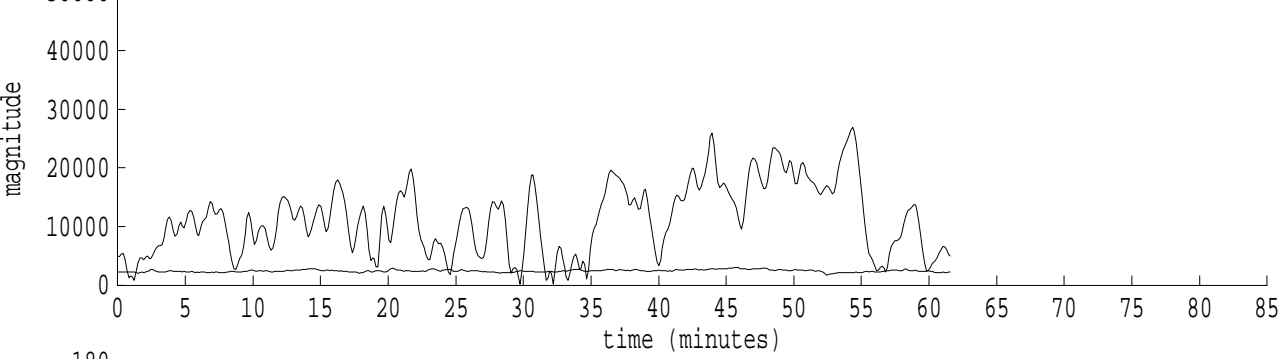
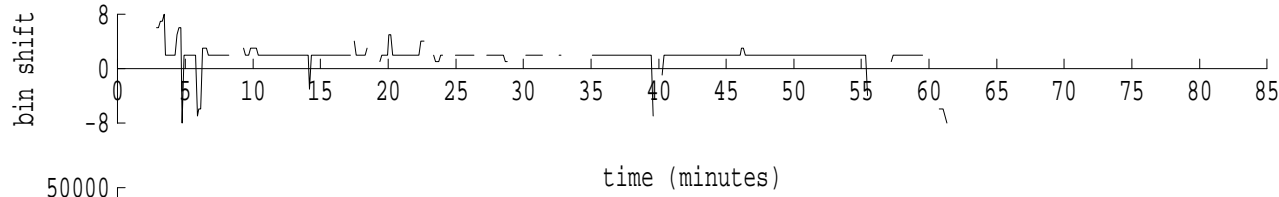
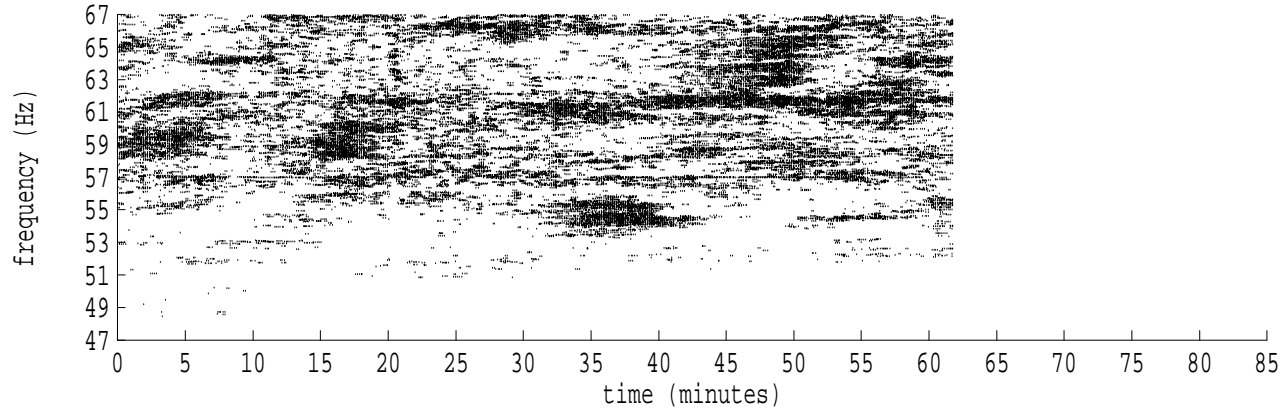


fft size: 16384
overlap: 7/8
sw_hamm: 1
sample rate: 250 Hz
bin width: 0.0153 Hz
int time: 65.54 sec
bin freq: 57.037 Hz
threshold: 2.50
r_max: 18825
c rms: 8223
n (rms): 350
offset: 2
pkr median: 1101
ave median: 1220
nor median: 1290
sdv median: 261
n median: 125
peak snr: 23.3 dB
c snr: 16.1 dB
sw_line: 1
sw_theta: 1
freq: 57.0388 Hz
ship spd: 1.020 m/s
1.984 knts

Heard Island - Ascension (PAFB2) File: run19r3.sam Ch. 3 Julian:336:10:25:42

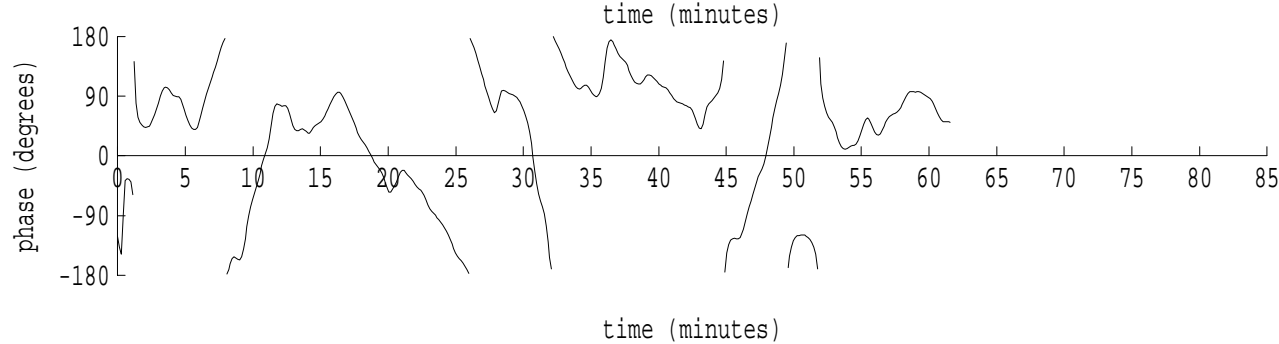
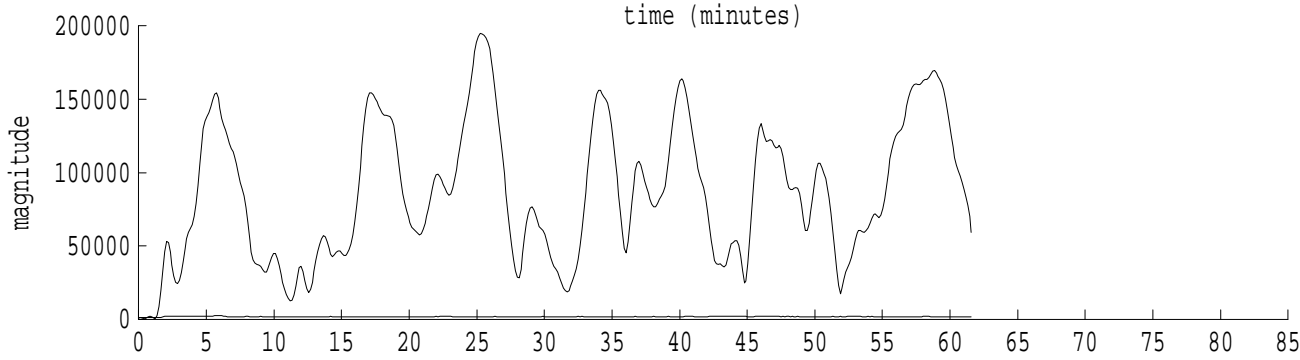
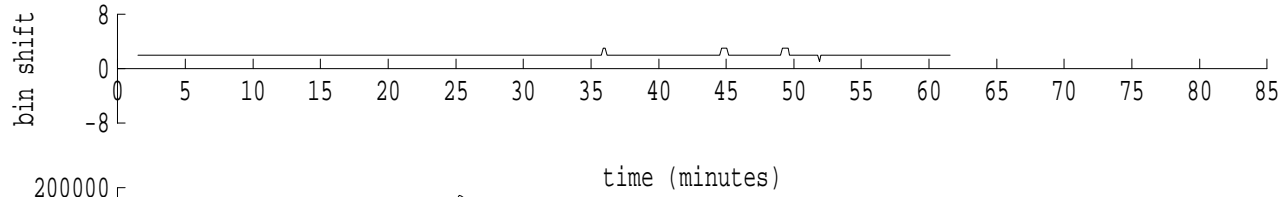
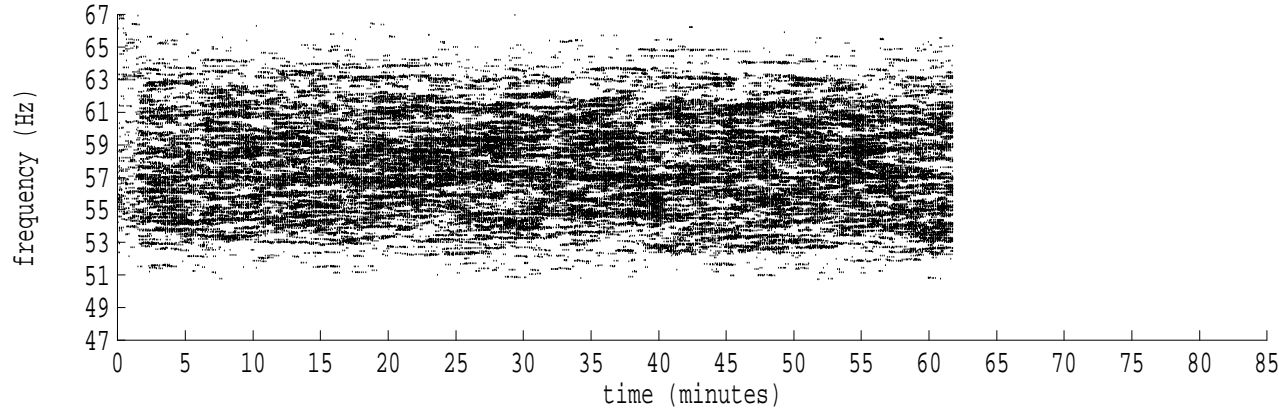


fft size: 16384
overlap: 7/8
sw_hamm: 1
sample rate: 250 Hz
bin width: 0.0153 Hz
int time: 65.54 sec
bin freq: 57.037 Hz
threshold: 2.50
r_max: 16291
c rms: 7782
n (rms): 416
offset: 2
pkr median: 834
ave median: 878
nor median: 912
sdv median: 80
n median: 49
peak snr: 25.0 dB
c snr: 18.6 dB
sw_line: 1
sw_theta: 1
freq: 57.0386 Hz
ship spd: 1.015 m/s
1.973 knts



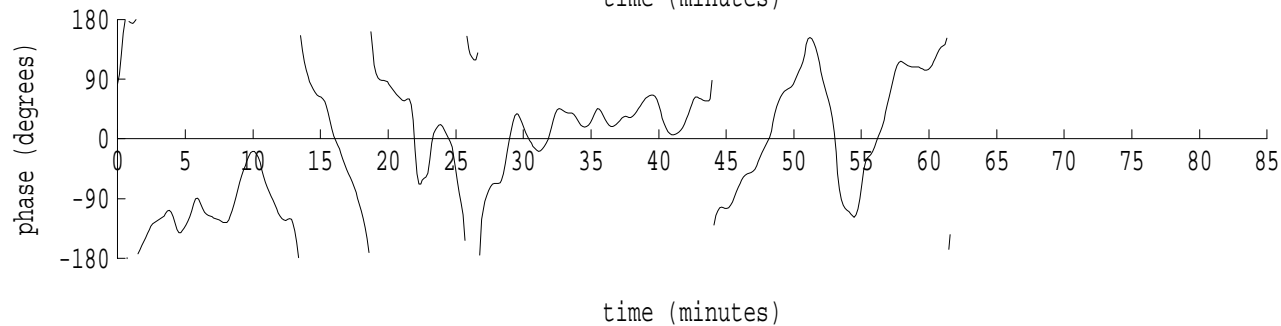
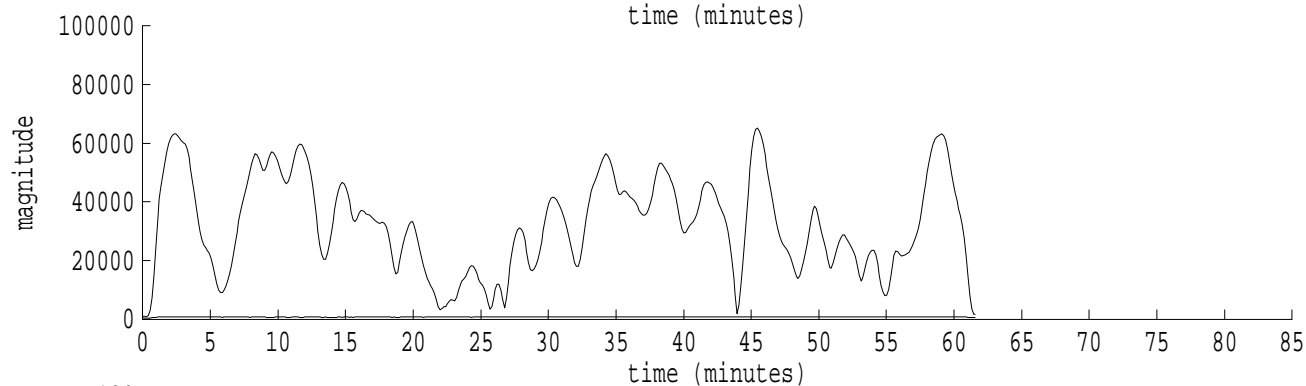
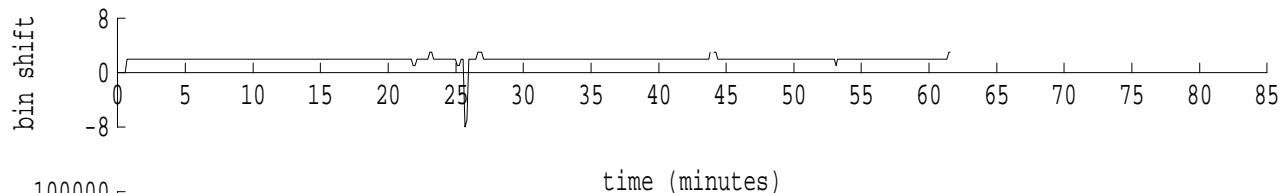
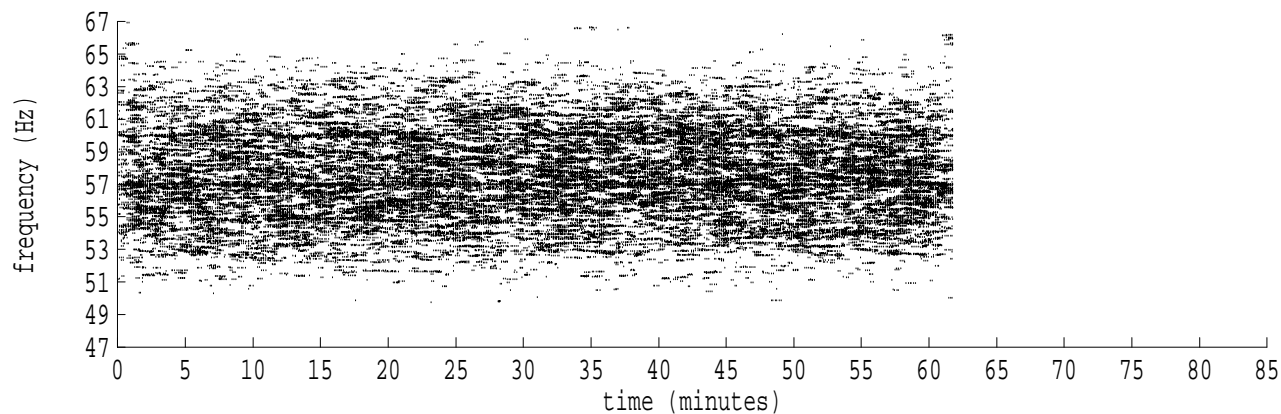
fft size: 16384
overlap: 7/8
sw_hamm: 1
sample rate: 250 Hz
bin width: 0.0153 Hz
int time: 65.54 sec
bin freq: 57.037 Hz
threshold: 2.50
r_max: 26913
c rms: 14470
n (rms): 342
offset: 2
pkr median: 2145
ave median: 2453
nor median: 2398
sdv median: 156
n median: 145
peak snr: 21.0 dB
c snr: 15.6 dB
sw_line: 1
sw_theta: 1
freq: 57.0391 Hz
ship spd: 1.028 m/s
1.999 knts

Heard Island - Ascension (PAFB2) File: run19r3.sam Ch. 5 Julian:336:10:25:42



fft size: 16384
overlap: 7/8
sw_hamm: 1
sample rate: 250 Hz
bin width: 0.0153 Hz
int time: 65.54 sec
bin freq: 57.037 Hz
threshold: 2.50
r_max: 194785
c rms: 98935
n (rms): 441
offset: 2
pkr median: 1710
ave median: 1792
nor median: 1023
sdv median: 21
n median: 11
peak snr: 45.6 dB
c snr: 39.7 dB
sw_line: 1
sw_theta: 1
freq: 57.0396 Hz
ship spd: 1.042 m/s
2.026 knts

Heard Island - Ascension (PAFB2) File: run19r3.sam Ch. 6 Julian:336:10:25:42



fft size: 16384
overlap: 7/8
sw_hamm: 1
sample rate: 250 Hz
bin width: 0.0153 Hz
int time: 65.54 sec
bin freq: 57.037 Hz
threshold: 2.50
r_max: 65190
c rms: 36370
n (rms): 448
offset: 2
pkr median: 837
ave median: 769
nor median: 542
sdv median: 126
n median: 5
peak snr: 41.6 dB
c snr: 36.5 dB
sw_line: 1
sw_theta: 1
freq: 57.0383 Hz
ship spd: 1.006 m/s
1.955 knts