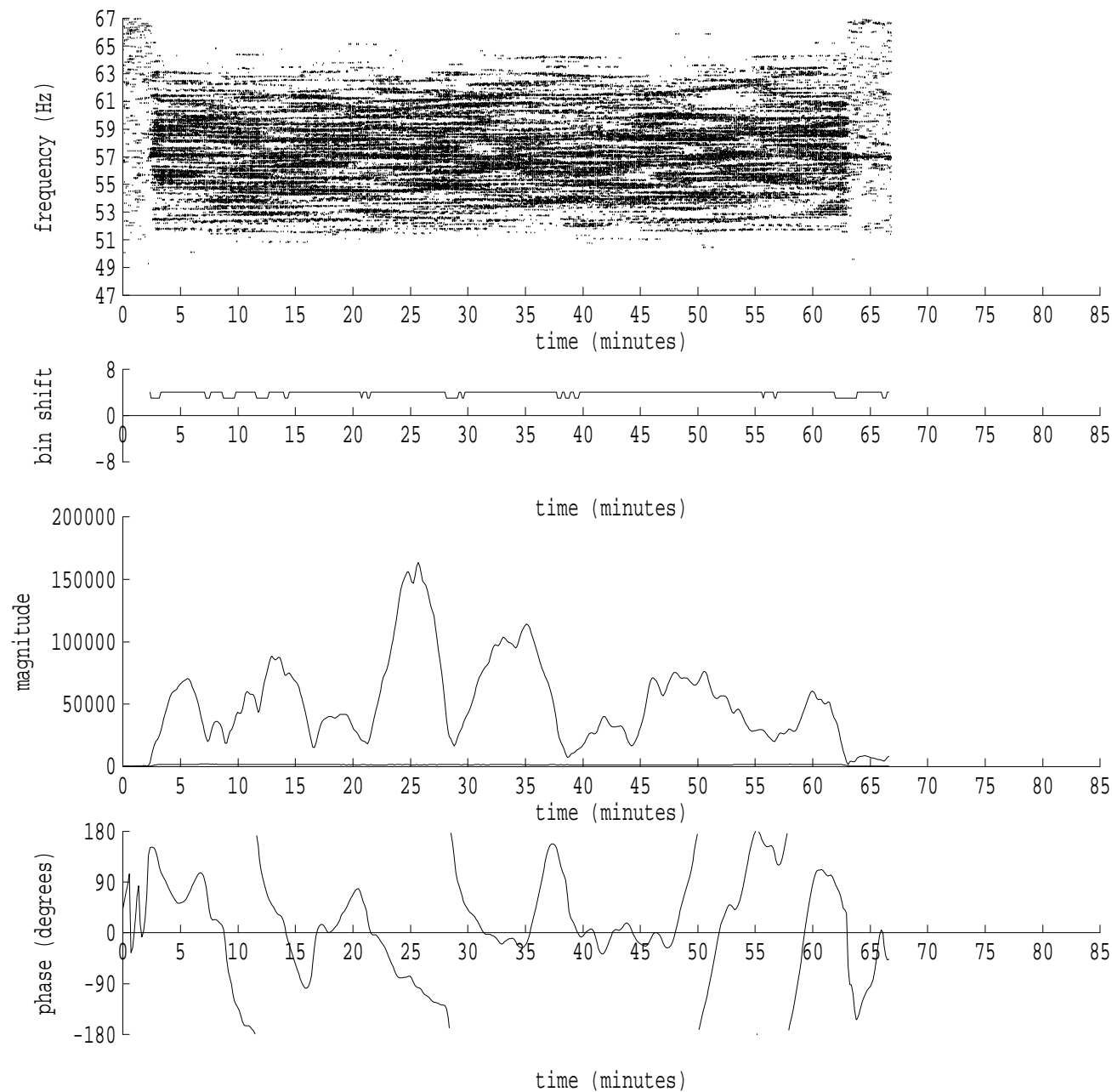
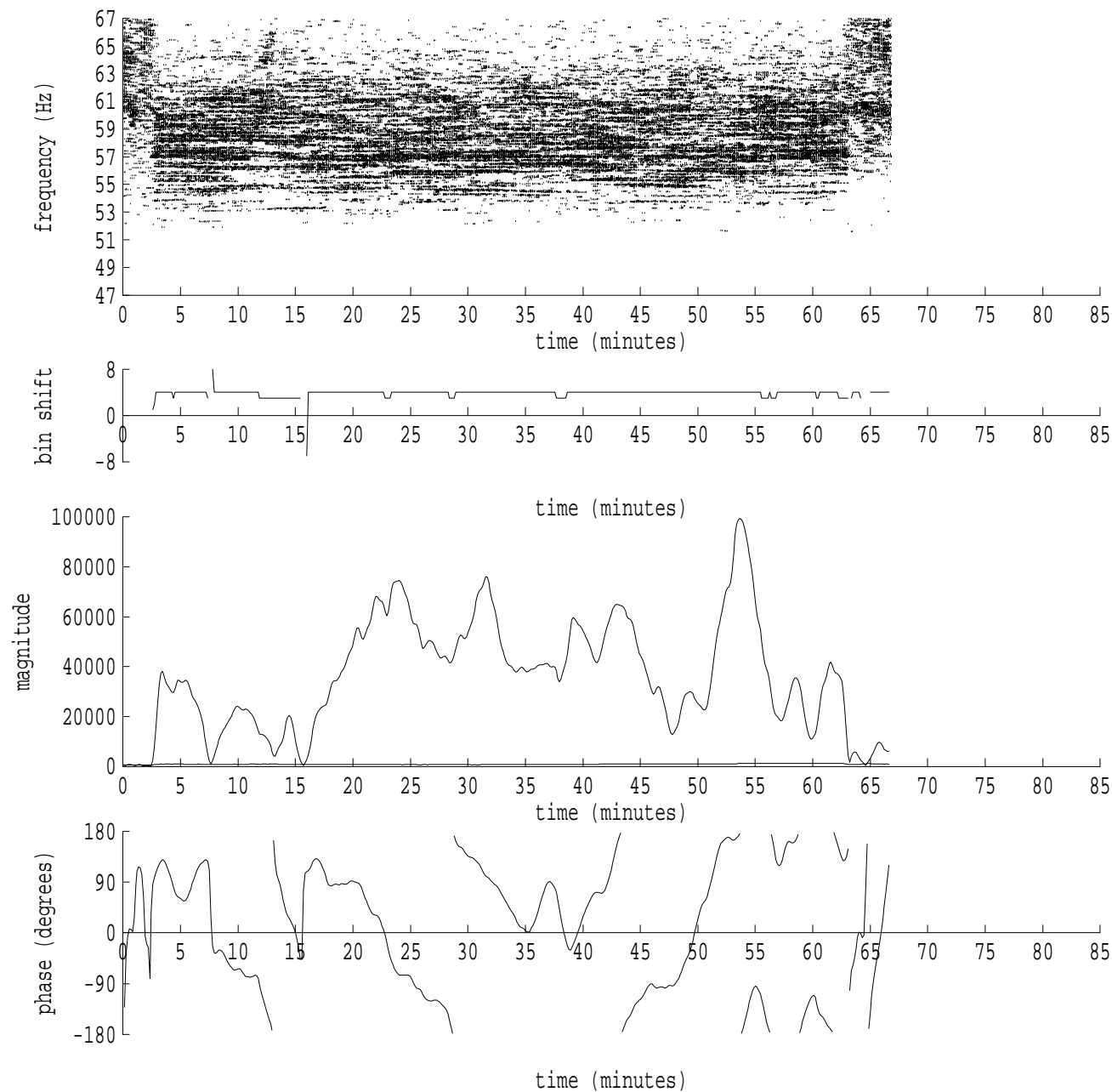


Heard Island - Ascension (PAFB2) File: run12r1.sam Ch. 2 Julian:335:15:45:25



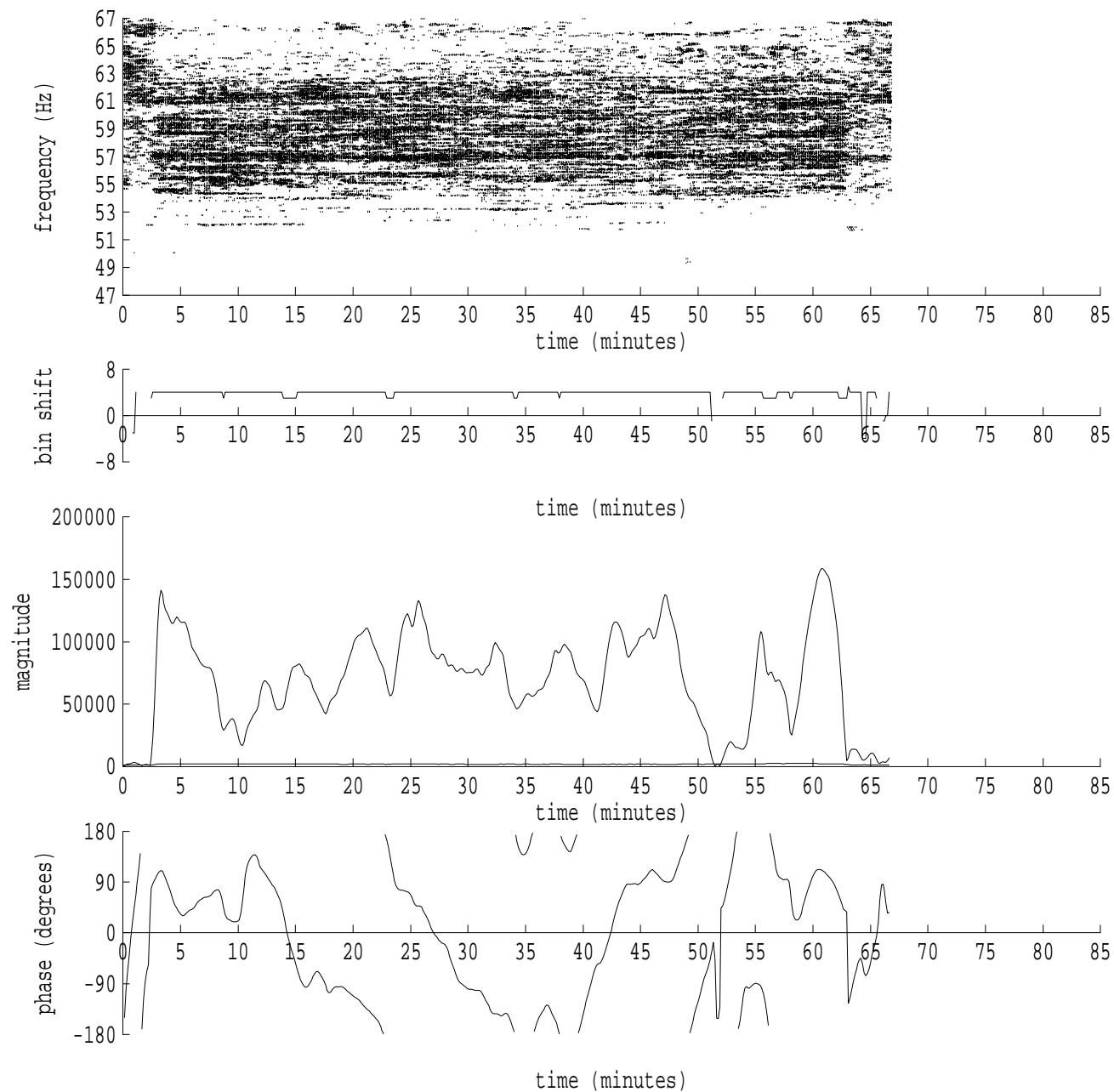
fft size: 16384
overlap: 7/8
sw_hamm: 1
sample rate: 250 Hz
bin width: 0.0153 Hz
int time: 65.54 sec
bin freq: 57.068 Hz
threshold: 2.50
r_max: 163531
c rms: 62407
n (rms): 472
offset: 4
pkr median: 1396
ave median: 1402
nor median: 402
sdv median: 43
n median: 18
peak snr: 52.2 dB
c snr: 43.8 dB
sw_line: 1
sw_theta: 1
freq: 57.0636 Hz
ship spd: 1.671 m/s
3.249 knts

Heard Island - Ascension (PAFB2) File: run12r1.sam Ch. 3 Julian:335:15:45:25



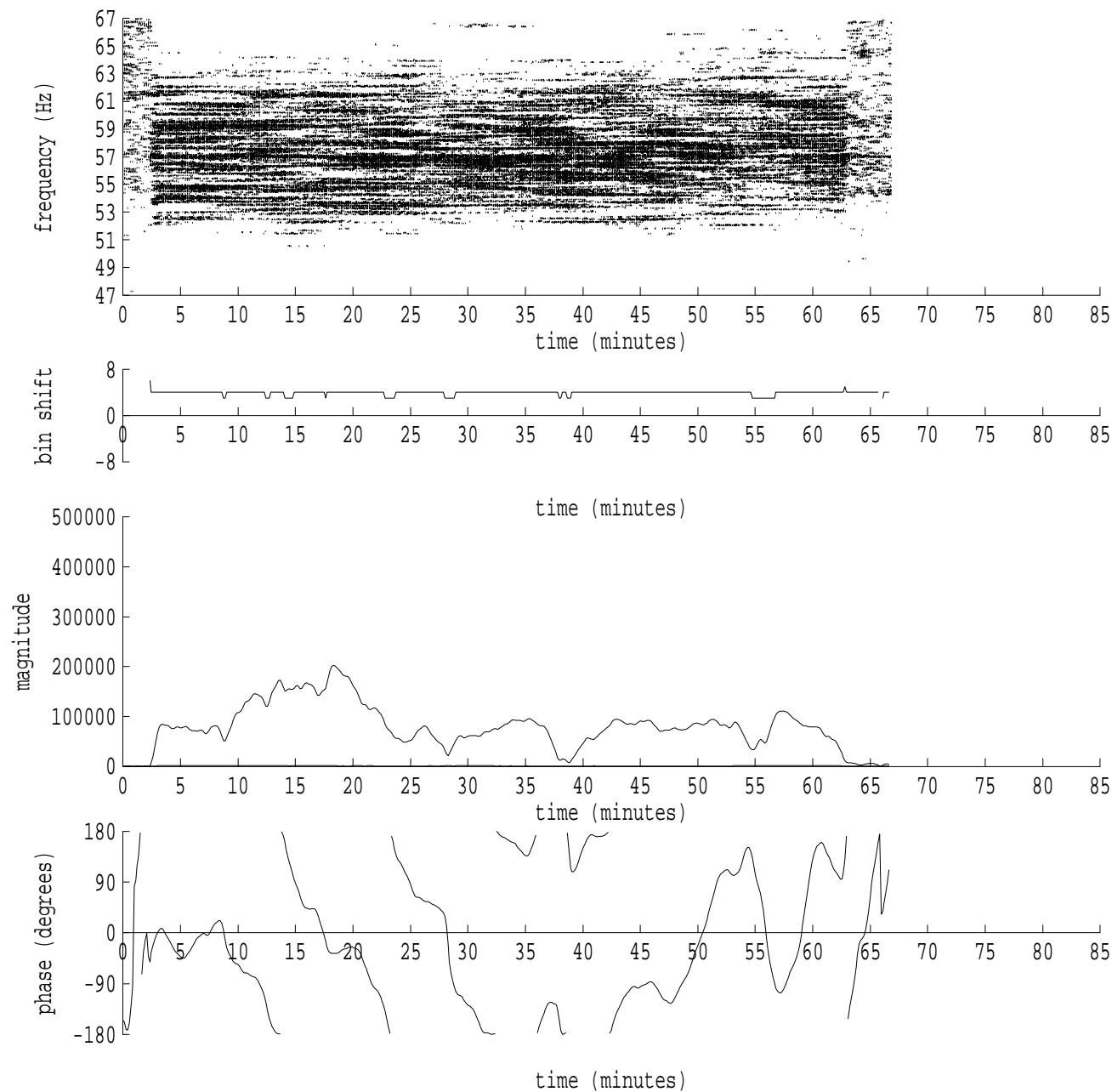
fft size: 16384
overlap: 7/8
sw_hamm: 1
sample rate: 250 Hz
bin width: 0.0153 Hz
int time: 65.54 sec
bin freq: 57.068 Hz
threshold: 2.50
r_max: 99381
c rms: 43721
n (rms): 459
offset: 4
pkr median: 1215
ave median: 913
nor median: 754
sdv median: 205
n median: 33
peak snr: 42.4 dB
c snr: 35.3 dB
sw_line: 1
sw_theta: 1
freq: 57.0635 Hz
ship spd: 1.668 m/s
3.244 knts

Heard Island - Ascension (PAFB2) File: run12r1.sam Ch. 4 Julian:335:15:45:25

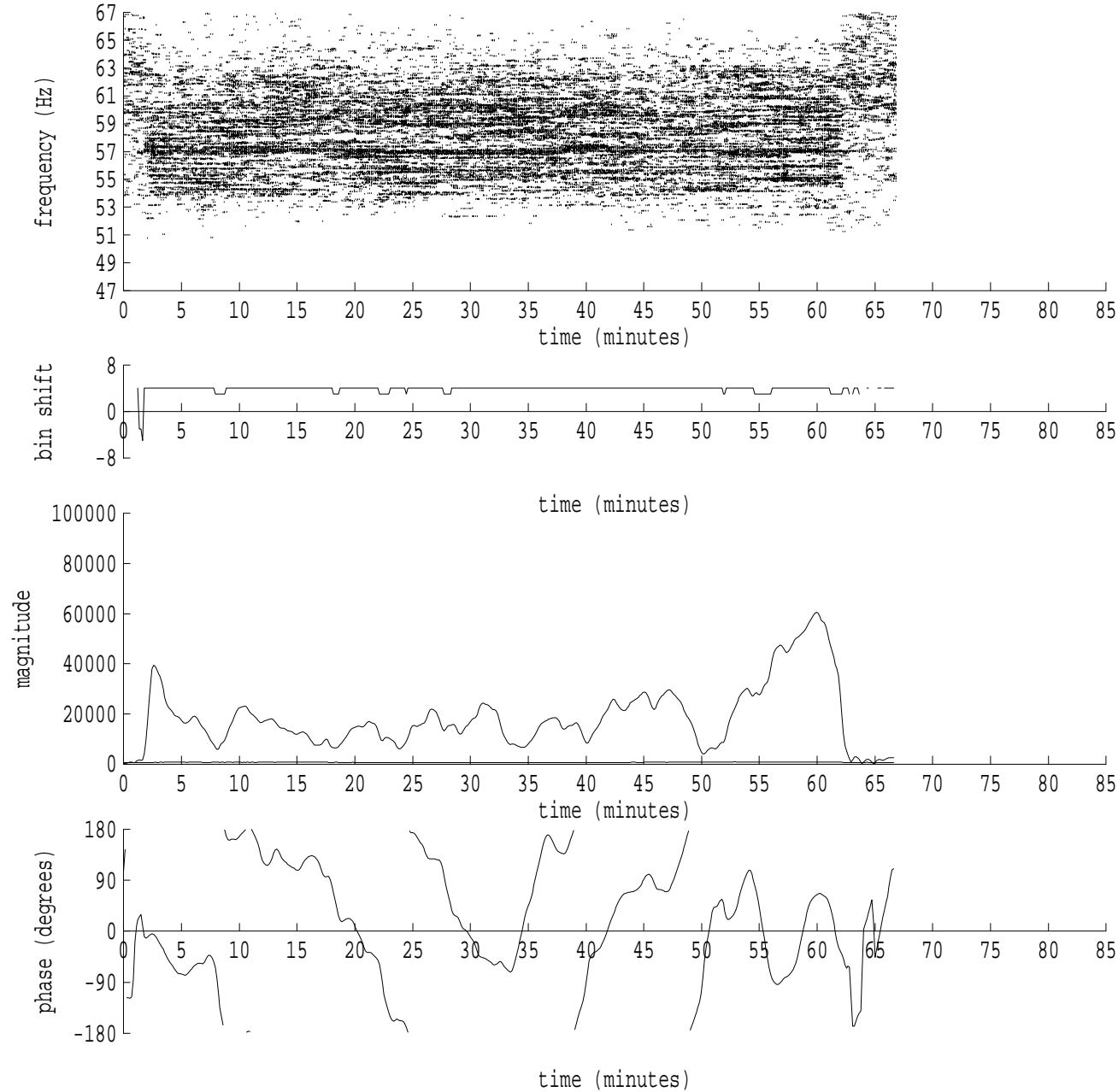


fft size: 16384
overlap: 7/8
sw_hamm: 1
sample rate: 250 Hz
bin width: 0.0153 Hz
int time: 65.54 sec
bin freq: 57.068 Hz
threshold: 2.50
r_max: 158707
c rms: 81450
n (rms): 465
offset: 4
pkr median: 2193
ave median: 1908
nor median: 1335
sdv median: 304
n median: 31
peak snr: 41.5 dB
c snr: 35.7 dB
sw_line: 1
sw_theta: 1
freq: 57.0638 Hz
ship spd: 1.677 m/s
3.262 knts

Heard Island - Ascension (PAFB2) File: run12r1.sam Ch. 5 Julian:335:15:45:25



fft size: 16384
overlap: 7/8
sw_hamm: 1
sample rate: 250 Hz
bin width: 0.0153 Hz
int time: 65.54 sec
bin freq: 57.068 Hz
threshold: 2.50
r_max: 202434
c rms: 92479
n (rms): 470
offset: 4
pkr median: 1450
ave median: 1330
nor median: 496
sdv median: 32
n median: 19
peak snr: 52.2 dB
c snr: 45.4 dB
sw_line: 1
sw_theta: 1
freq: 57.0636 Hz
ship spd: 1.672 m/s
3.251 knts



fft size: 16384
overlap: 7/8
sw_hamm: 1
sample rate: 250 Hz
bin width: 0.0153 Hz
int time: 65.54 sec
bin freq: 57.068 Hz
threshold: 2.50
r_max: 60623
c rms: 22889
n (rms): 469
offset: 4
pkr median: 858
ave median: 716
nor median: 607
sdv median: 60
n median: 27
peak snr: 40.0 dB
c snr: 31.5 dB
sw_line: 1
sw_theta: 1
freq: 57.0639 Hz
ship spd: 1.680 m/s
3.267 knts