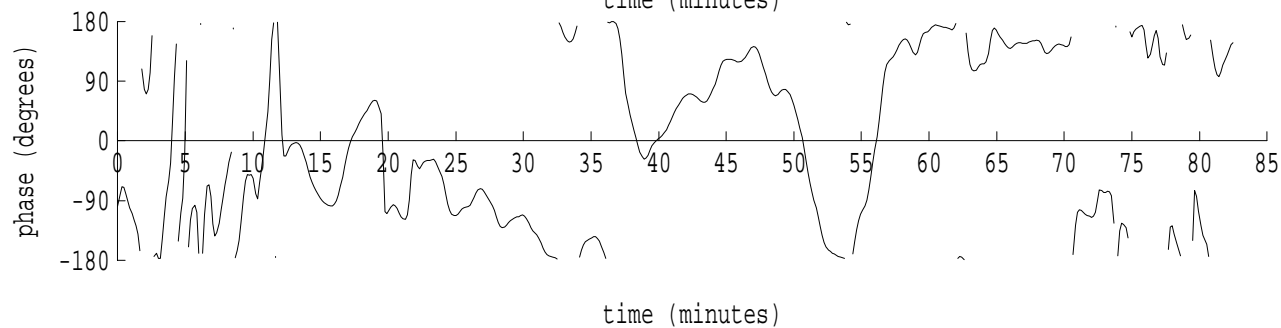
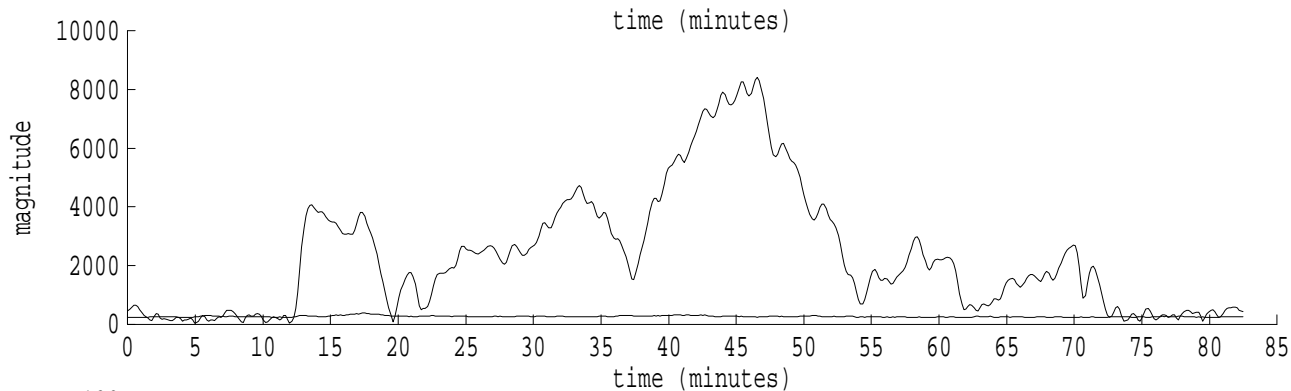
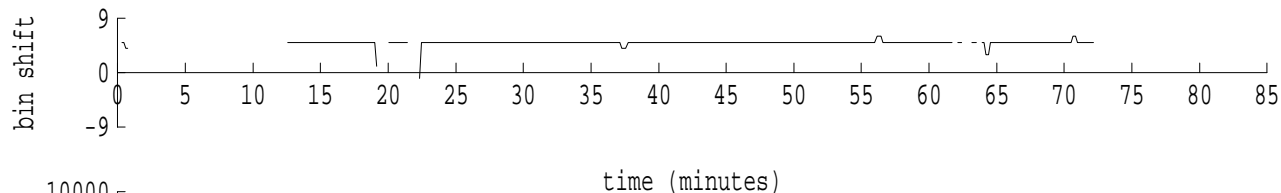
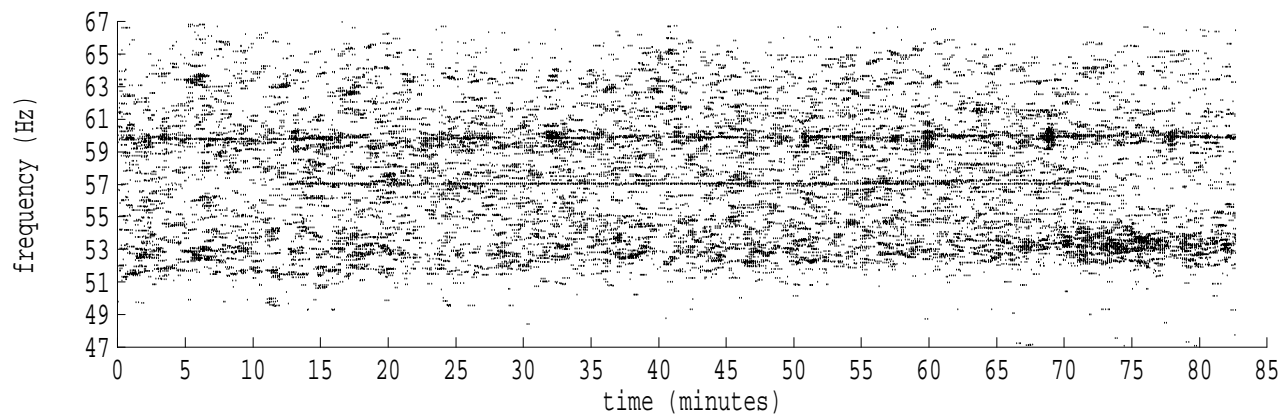
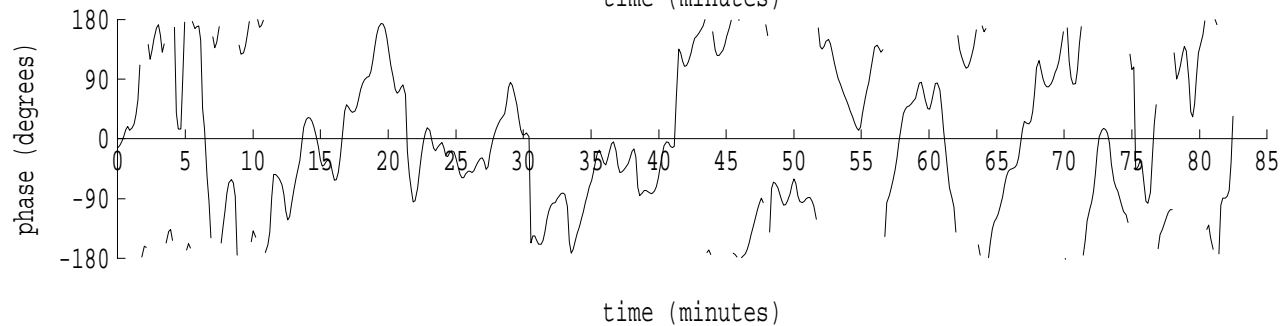
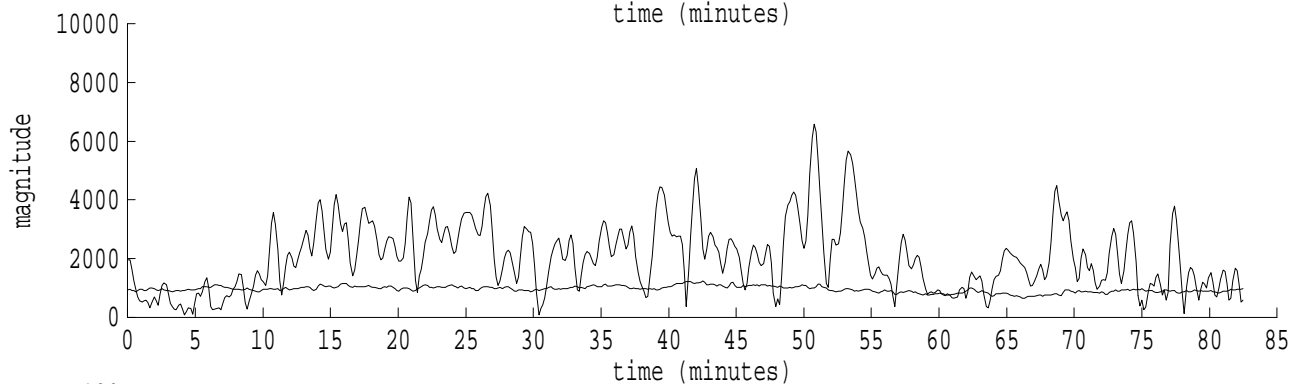
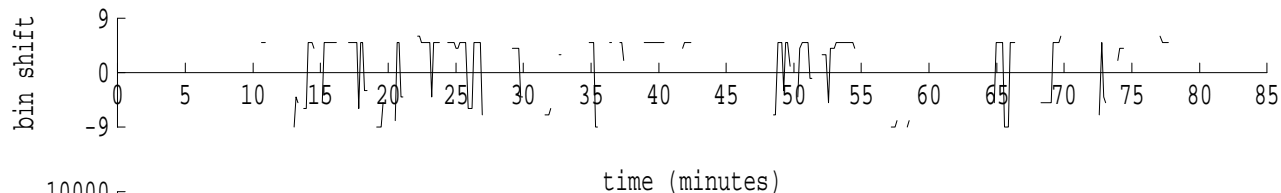
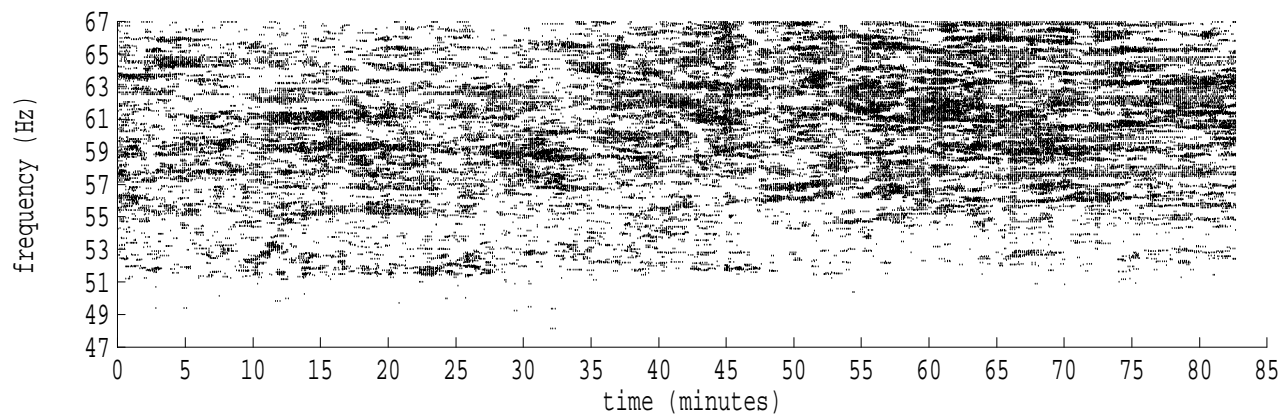


Heard Island - Ascension Island (PC2) File: a1301930.sam Ch. 1 Julian:030:19:30:13



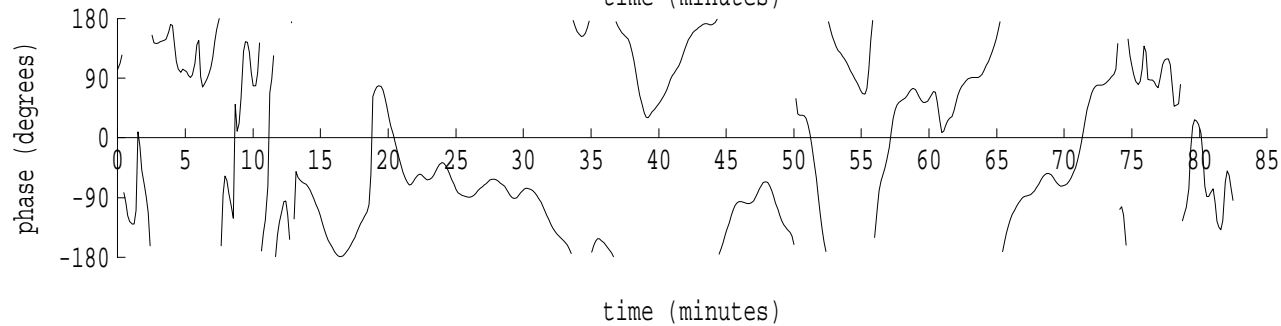
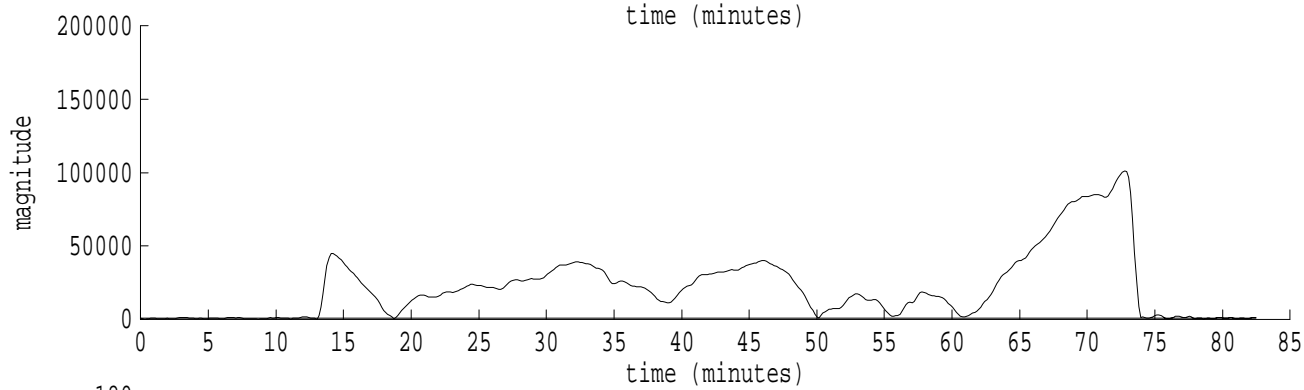
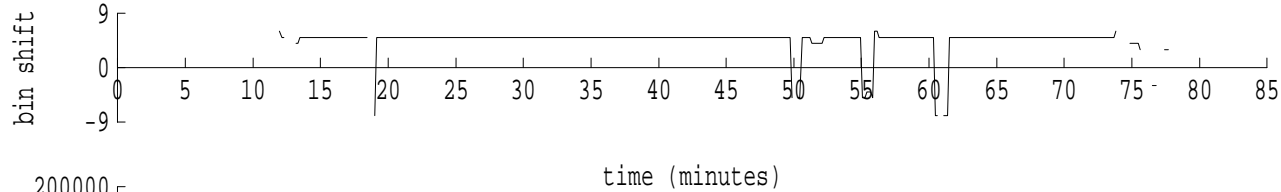
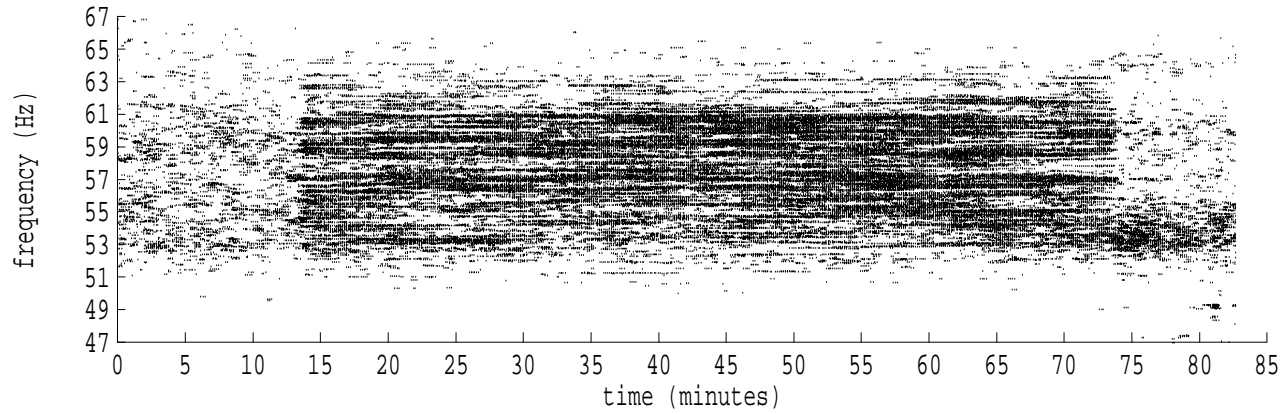
fft size: 16384  
overlap: 7/8  
sw\_hamm: 1  
sample rate: 228 Hz  
bin width: 0.0139 Hz  
int time: 71.86 sec  
bin freq: 57.070 Hz  
threshold: 2.50  
r\_max: 8408  
c rms: 3741  
n (rms): 385  
offset: 5  
pkr median: 245  
ave median: 265  
nor median: 254  
sdv median: 16  
n median: 182  
peak snr: 30.4 dB  
c snr: 23.3 dB  
sw\_line: 1  
sw\_theta: 1  
freq: 57.0687 Hz  
ship spd: 1.806 m/s  
3.512 knts

Heard Island - Ascension Island (PC2) File: a1301930.sam Ch. 2 Julian:030:19:30:13



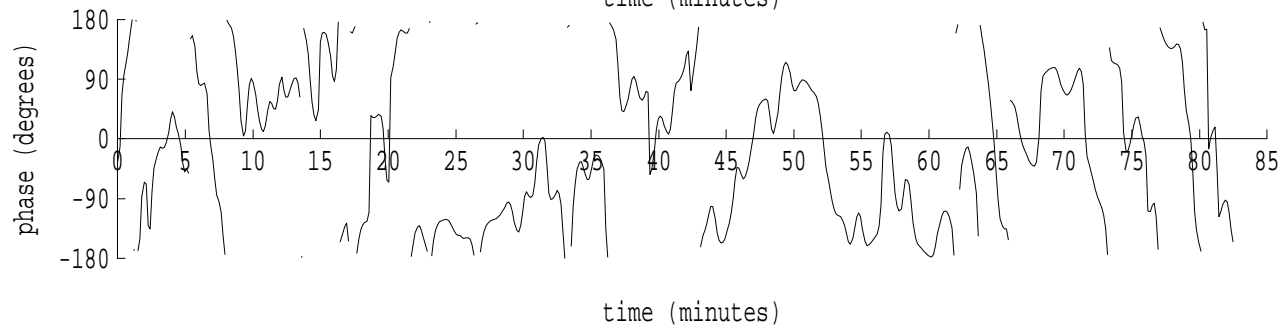
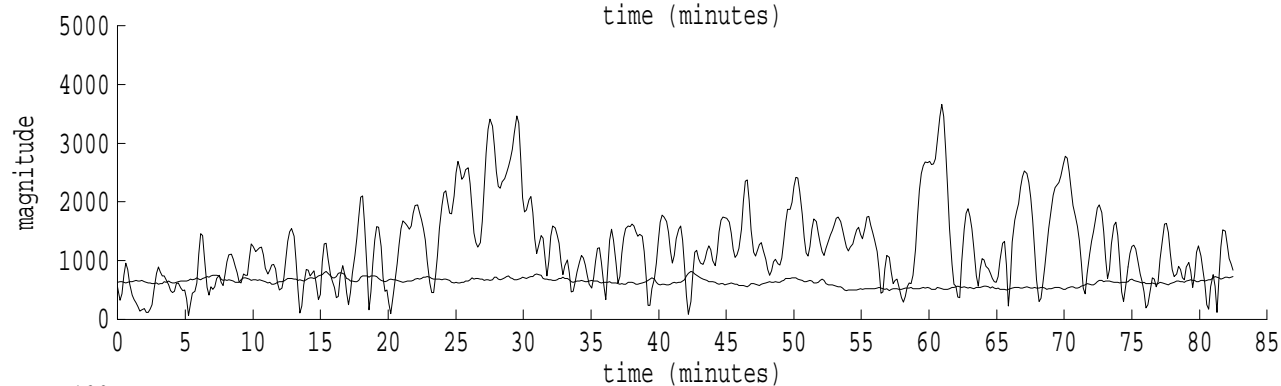
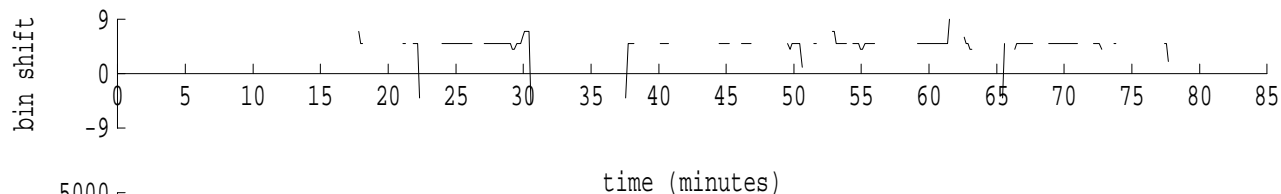
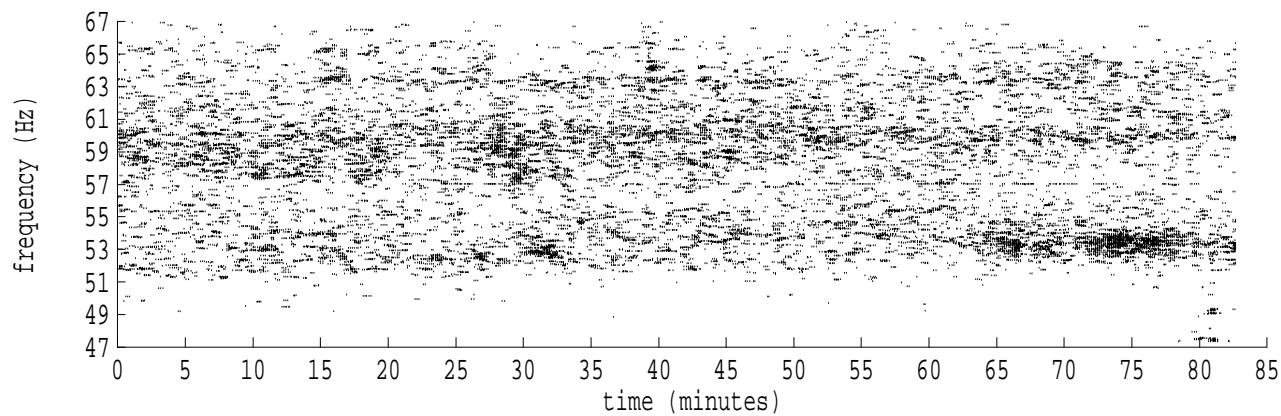
fft size: 16384  
overlap: 7/8  
sw\_hamm: 1  
sample rate: 228 Hz  
bin width: 0.0139 Hz  
int time: 71.86 sec  
bin freq: 57.070 Hz  
threshold: 2.50  
r\_max: 6732  
c rms: 3390  
n (rms): 185  
offset: 5  
pkr median: 1046  
ave median: 958  
nor median: 952  
sdv median: 110  
n median: 445  
peak snr: 17.0 dB  
c snr: 11.0 dB  
sw\_line: 1  
sw\_theta: 1  
freq: 57.0677 Hz  
ship spd: 1.779 m/s  
3.459 knts

Heard Island - Ascension Island (PC2) File: a1301930.sam Ch. 3 Julian:030:19:30:13



fft size: 16384  
overlap: 7/8  
sw\_hamm: 1  
sample rate: 228 Hz  
bin width: 0.0139 Hz  
int time: 71.86 sec  
bin freq: 57.070 Hz  
threshold: 2.50  
r\_max: 100998  
c rms: 35842  
n (rms): 414  
offset: 5  
pkr median: 923  
ave median: 768  
nor median: 654  
sdv median: 69  
n median: 153  
peak snr: 43.8 dB  
c snr: 34.8 dB  
sw\_line: 1  
sw\_theta: 1  
freq: 57.0690 Hz  
ship spd: 1.812 m/s  
3.524 knts

Heard Island - Ascension Island (PC2) File: a1301930.sam Ch. 4 Julian:030:19:30:13



fft size: 16384  
overlap: 7/8  
sw\_hamm: 1  
sample rate: 228 Hz  
bin width: 0.0139 Hz  
int time: 71.86 sec  
bin freq: 57.070 Hz  
threshold: 2.50  
r\_max: 3774  
c rms: 2140  
n (rms): 161  
offset: 5  
pkr median: 675  
ave median: 632  
nor median: 640  
sdv median: 64  
n median: 462  
peak snr: 15.4 dB  
c snr: 10.5 dB  
sw\_line: 1  
sw\_theta: 1  
freq: 57.0680 Hz  
ship spd: 1.787 m/s  
3.476 knts