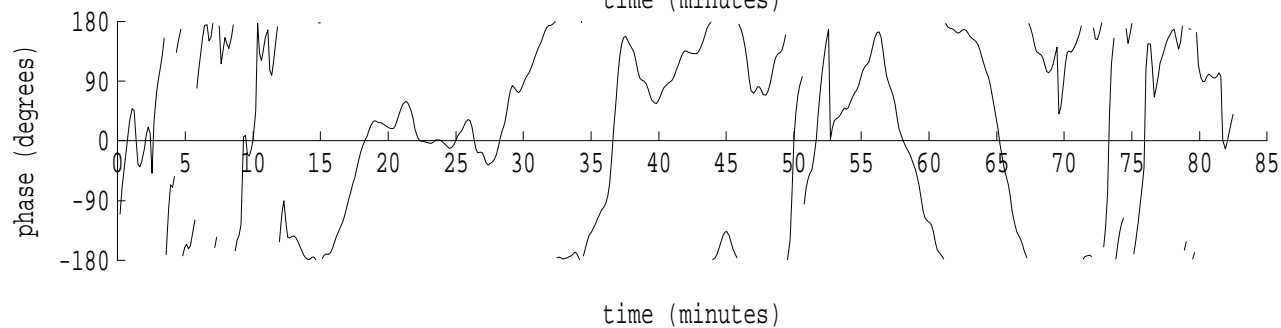
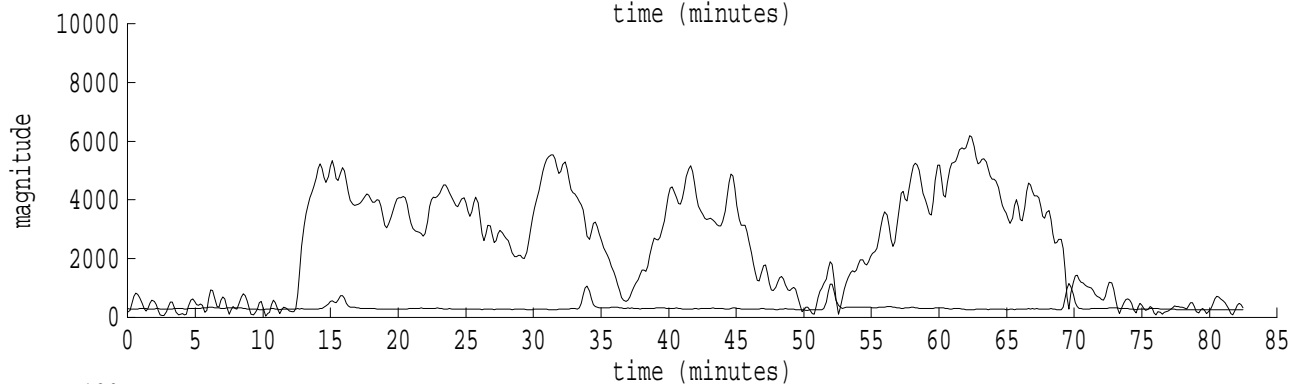
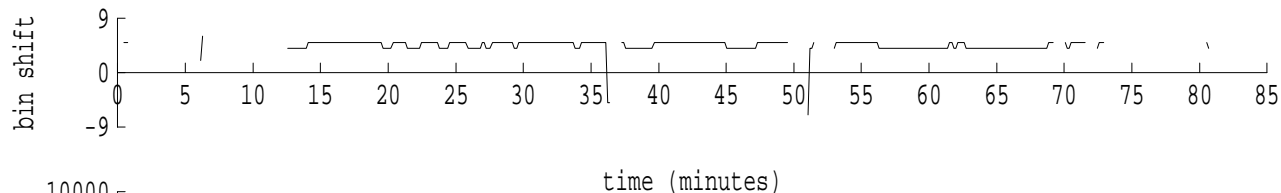
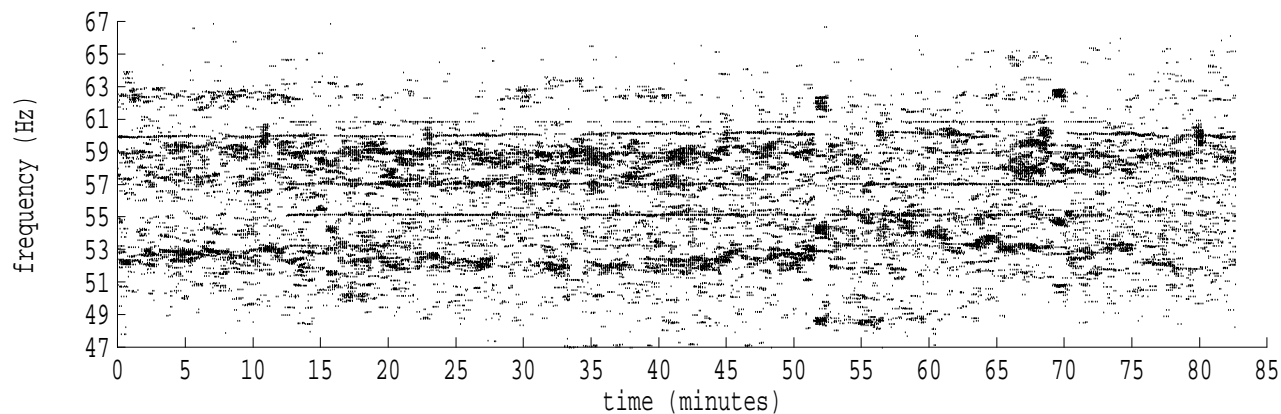
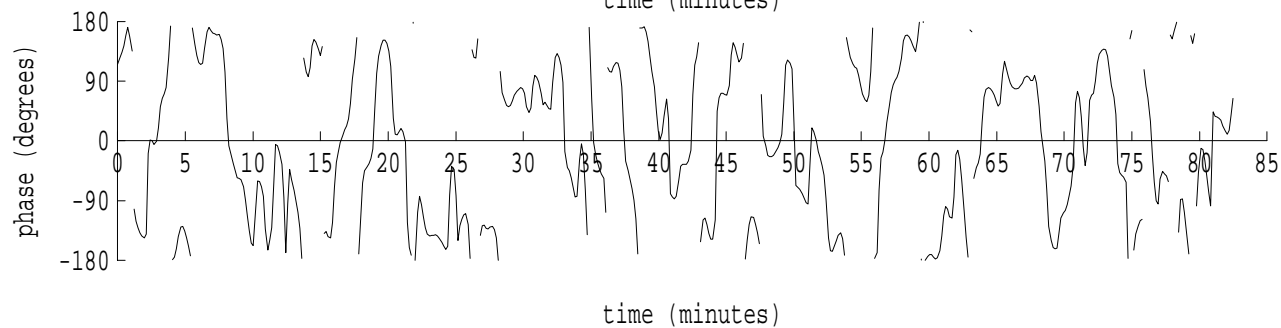
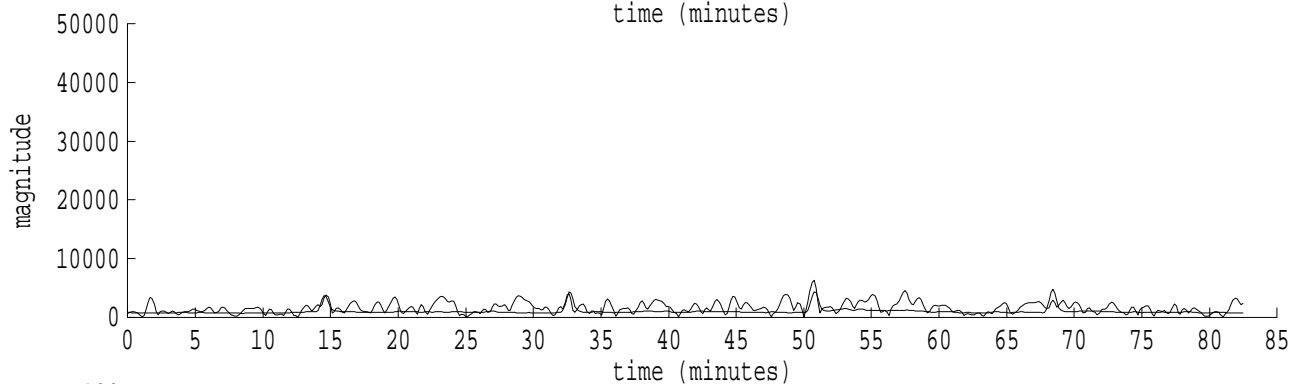
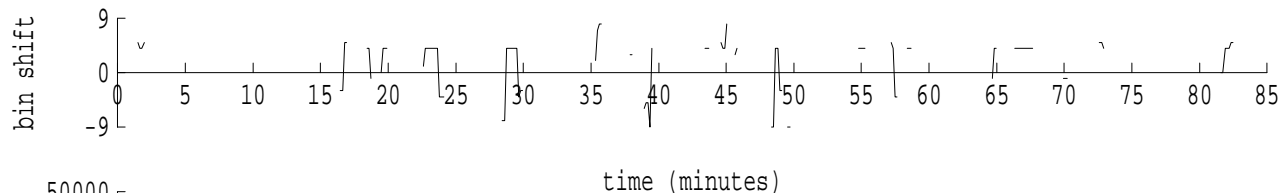
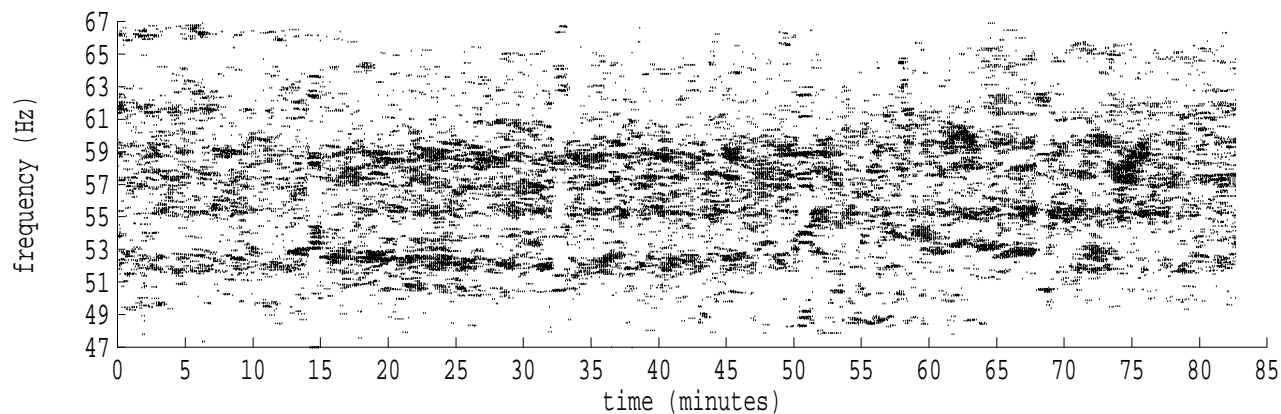


Heard Island - Ascension Island (PC2) File: a1301630.sam Ch. 1 Julian:030:16:30:13



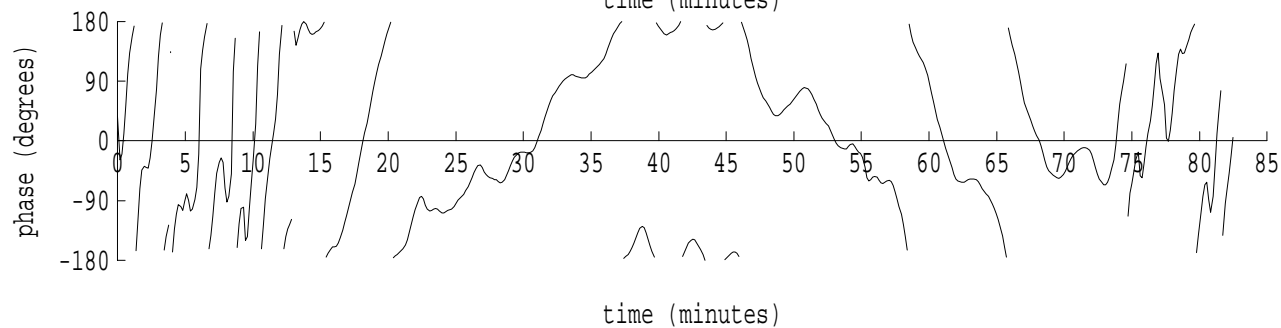
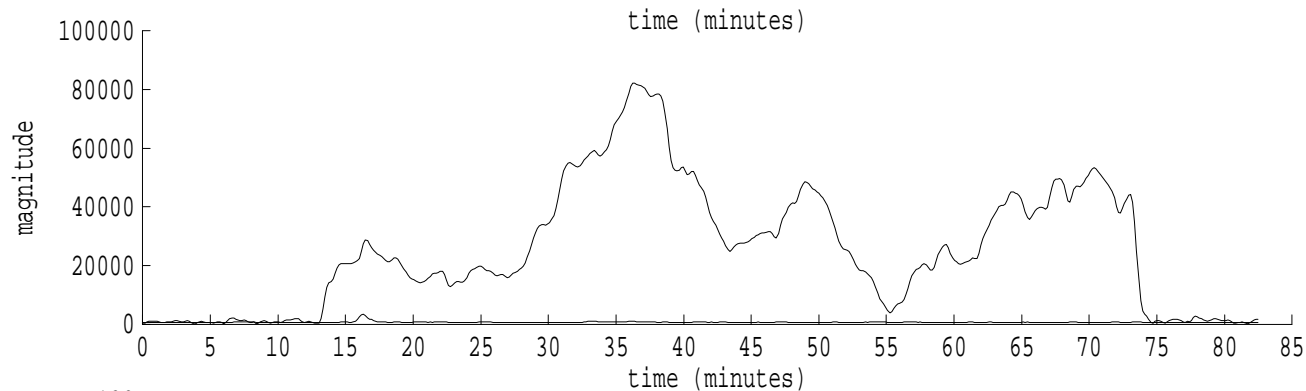
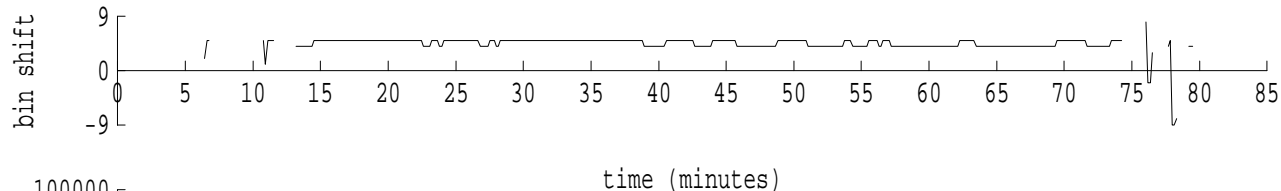
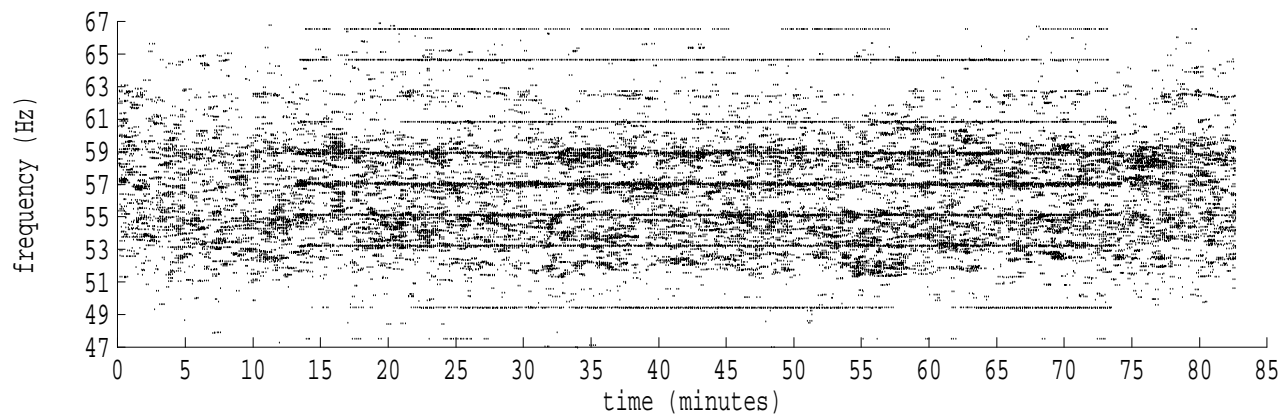
fft size: 16384  
overlap: 7/8  
sw\_hamm: 1  
sample rate: 228 Hz  
bin width: 0.0139 Hz  
int time: 71.86 sec  
bin freq: 57.070 Hz  
threshold: 2.50  
r\_max: 7037  
c rms: 3582  
n (rms): 379  
offset: 5  
pkr median: 331  
ave median: 315  
nor median: 328  
sdv median: 165  
n median: 191  
peak snr: 26.6 dB  
c snr: 20.7 dB  
sw\_line: 1  
sw\_theta: 1  
freq: 57.0632 Hz  
ship spd: 1.661 m/s  
3.231 knts

Heard Island - Ascension Island (PC2) File: a1301630.sam Ch. 2 Julian:030:16:30:13



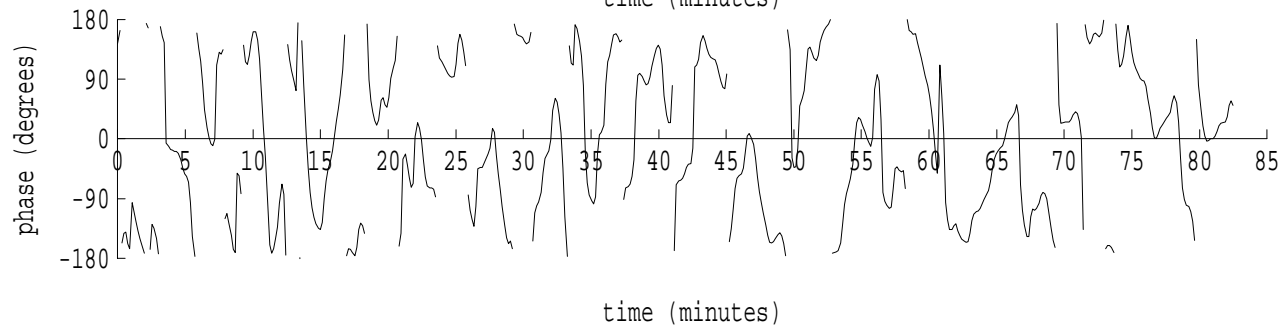
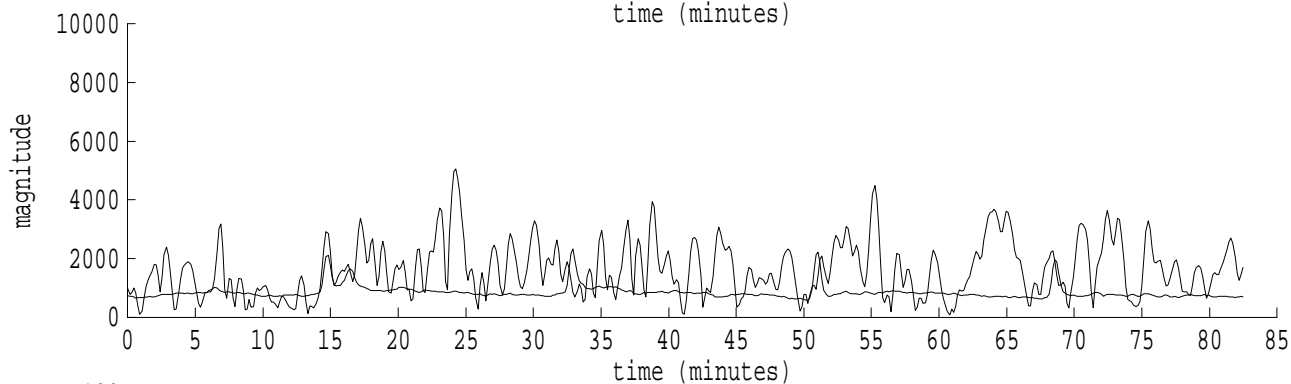
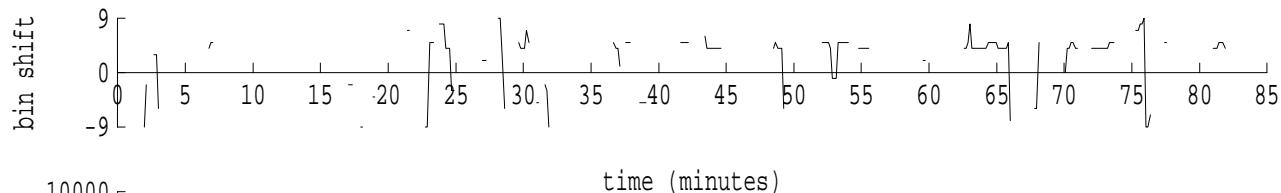
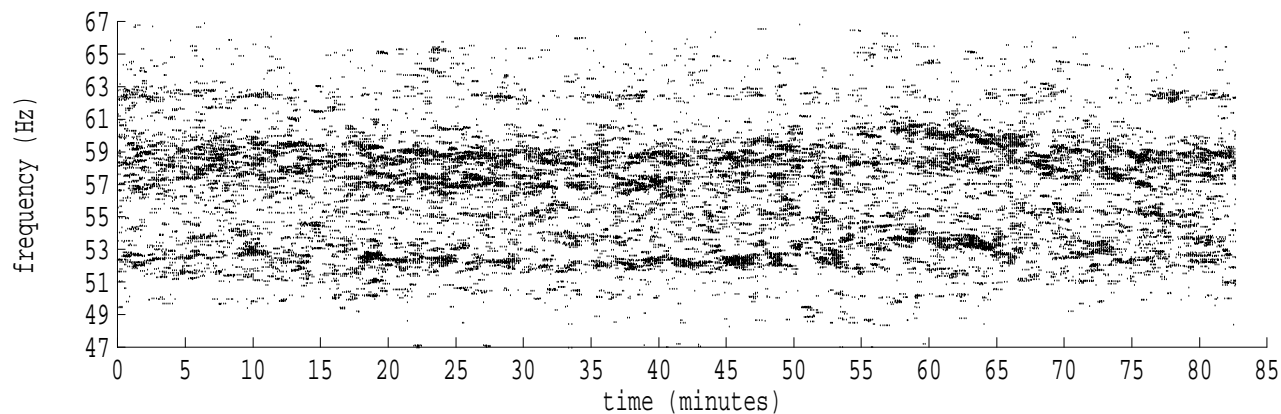
fft size: 16384  
overlap: 7/8  
sw\_hamm: 1  
sample rate: 228 Hz  
bin width: 0.0139 Hz  
int time: 71.86 sec  
bin freq: 57.056 Hz  
threshold: 2.50  
r\_max: 20397  
c rms: 2899  
n (rms): 104  
offset: 4  
pkr median: 4264  
ave median: 995  
nor median: 1008  
sdv median: 545  
n median: 494  
peak snr: 26.1 dB  
c snr: 9.2 dB  
sw\_line: 1  
sw\_theta: 1  
freq: 57.0579 Hz  
ship spd: 1.522 m/s  
2.959 knts

Heard Island - Ascension Island (PC2) File: a1301630.sam Ch. 3 Julian:030:16:30:13



fft size: 16384  
overlap: 7/8  
sw\_hamm: 1  
sample rate: 228 Hz  
bin width: 0.0139 Hz  
int time: 71.86 sec  
bin freq: 57.070 Hz  
threshold: 2.50  
r\_max: 82196  
c rms: 37471  
n (rms): 431  
offset: 5  
pkr median: 961  
ave median: 717  
nor median: 652  
sdv median: 42  
n median: 136  
peak snr: 42.0 dB  
c snr: 35.2 dB  
sw\_line: 1  
sw\_theta: 1  
freq: 57.0631 Hz  
ship spd: 1.657 m/s  
3.222 knts

Heard Island - Ascension Island (PC2) File: a1301630.sam Ch. 4 Julian:030:16:30:13



fft size: 16384  
overlap: 7/8  
sw\_hamm: 1  
sample rate: 228 Hz  
bin width: 0.0139 Hz  
int time: 71.86 sec  
bin freq: 57.056 Hz  
threshold: 2.50  
r\_max: 7066  
c rms: 2785  
n (rms): 167  
offset: 4  
pkr median: 834  
ave median: 848  
nor median: 863  
sdv median: 248  
n median: 446  
peak snr: 18.3 dB  
c snr: 10.2 dB  
sw\_line: 1  
sw\_theta: 1  
freq: 57.0592 Hz  
ship spd: 1.557 m/s  
3.027 knts