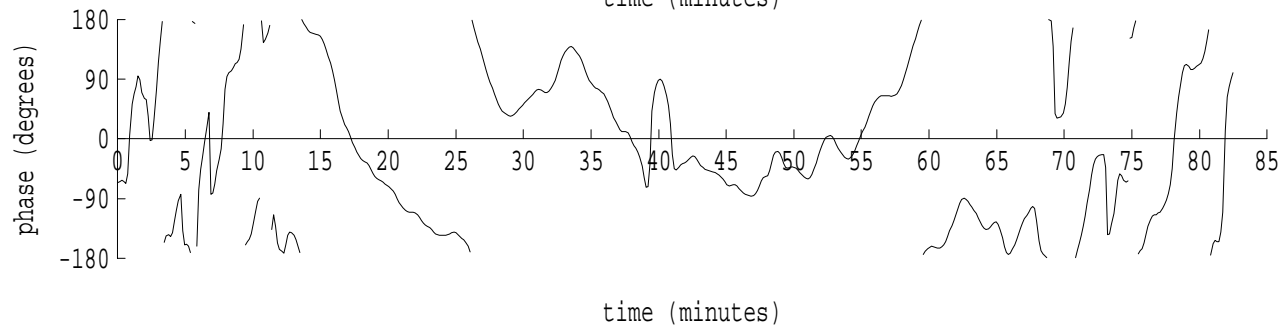
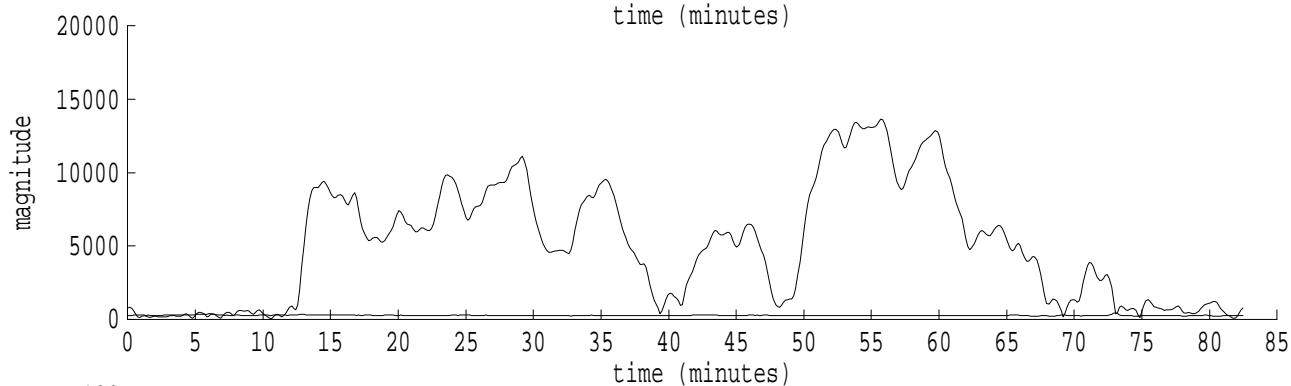
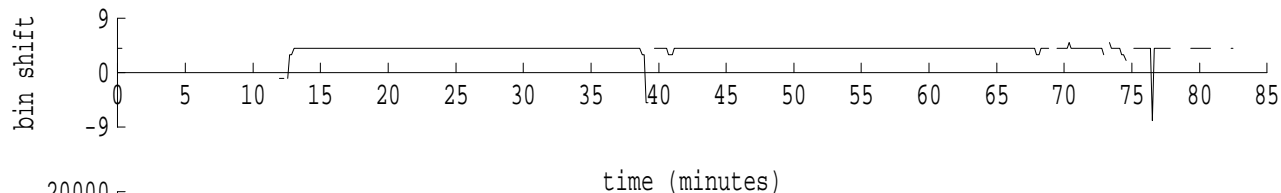
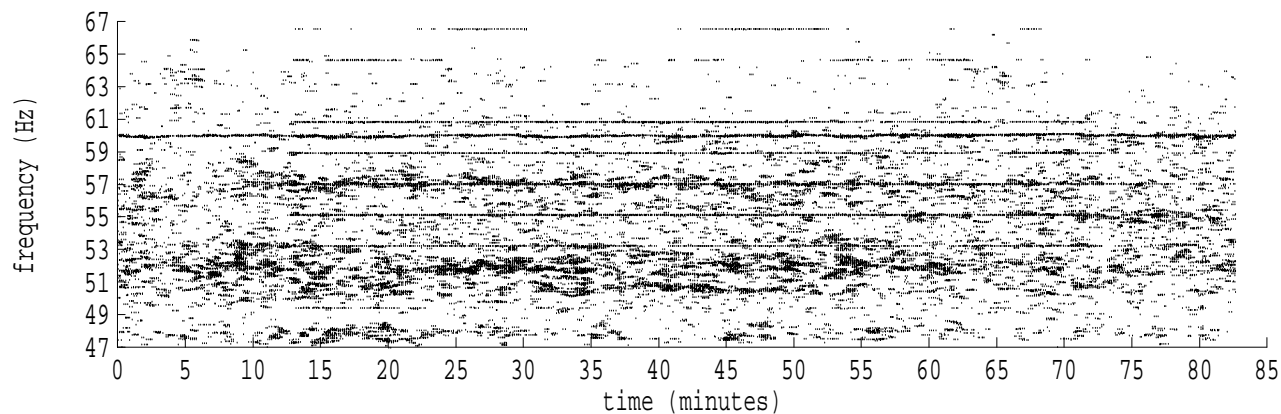
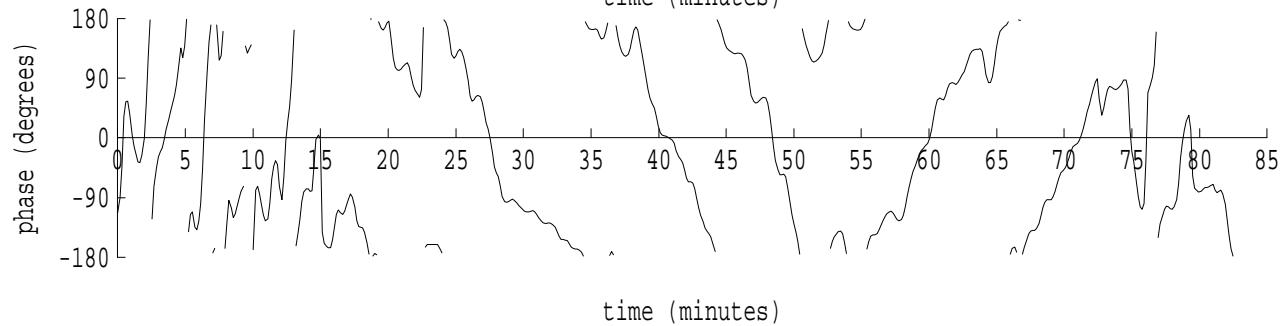
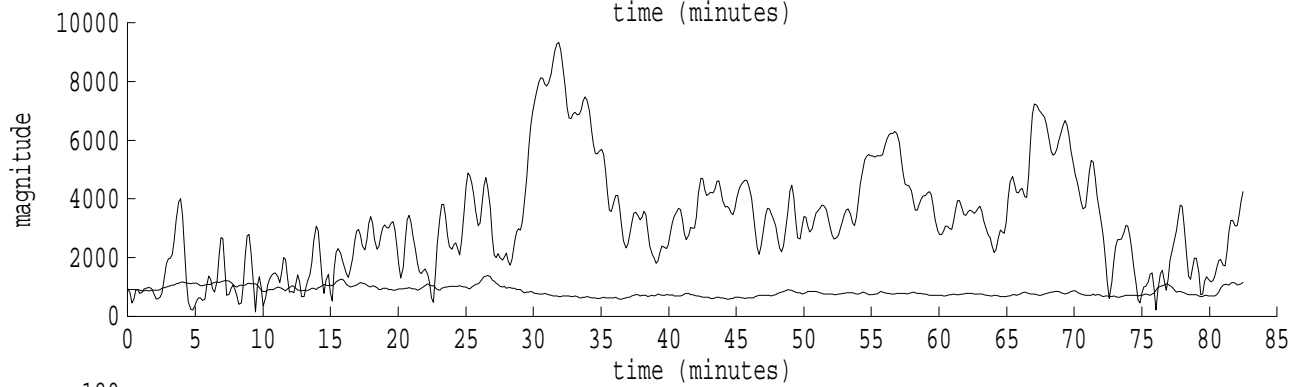
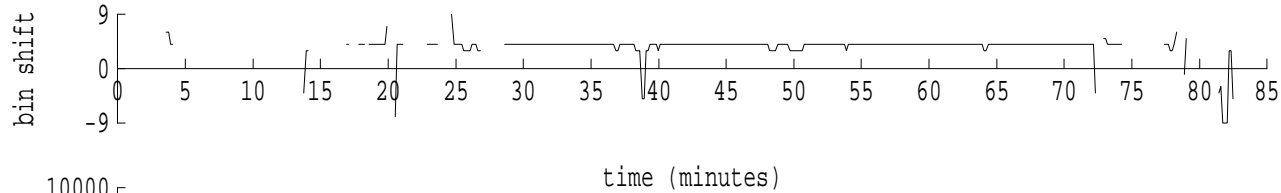
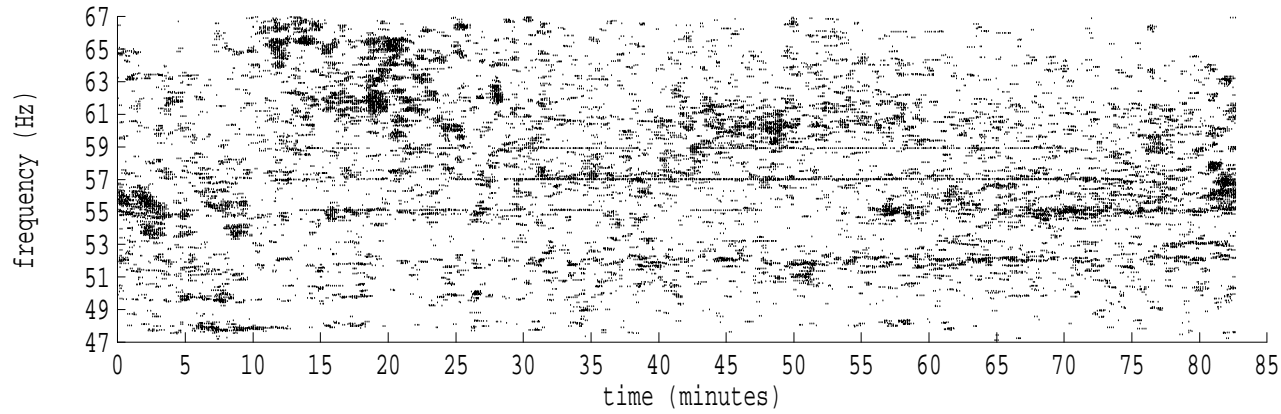


Heard Island - Ascension Island (PC2) File: a1271630.sam Ch. 1 Julian:027:16:30:13



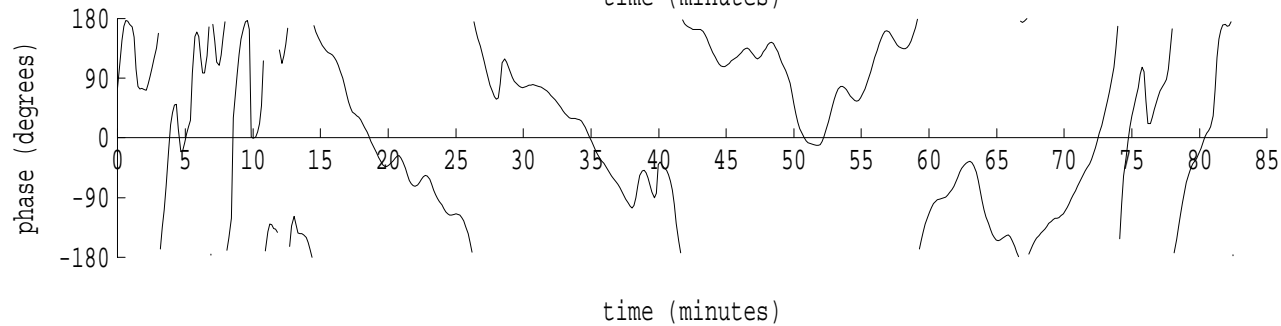
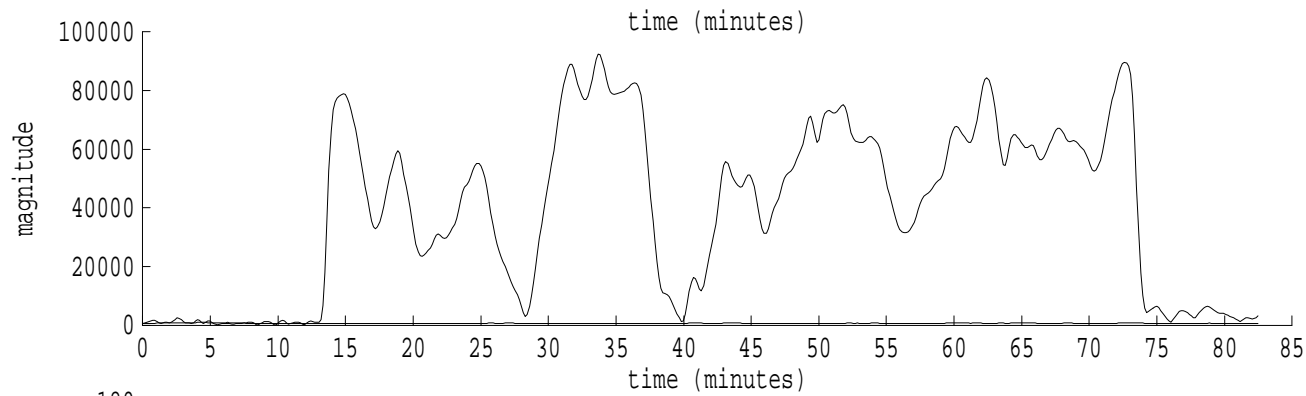
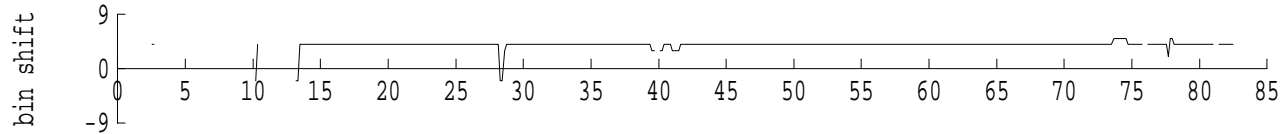
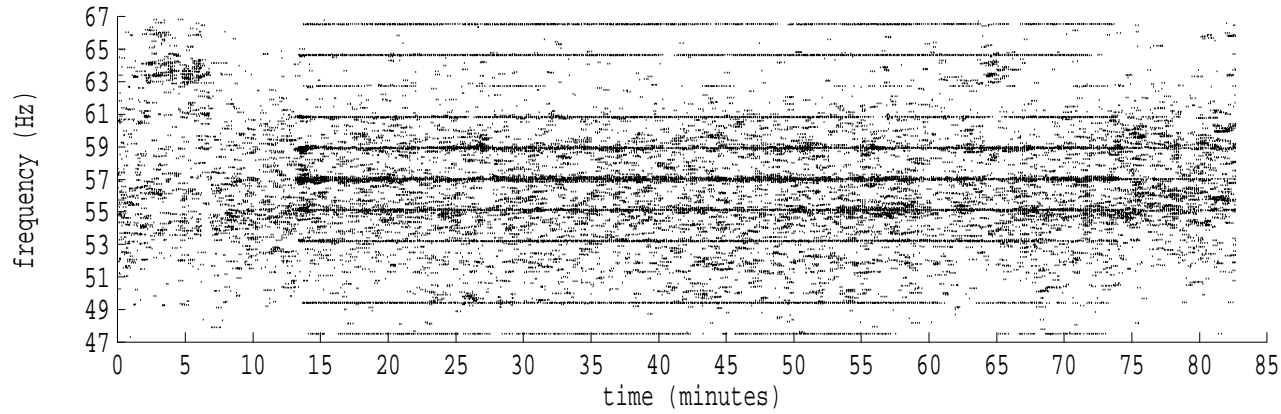
fft size: 16384  
overlap: 7/8  
sw\_hamm: 1  
sample rate: 228 Hz  
bin width: 0.0139 Hz  
int time: 71.86 sec  
bin freq: 57.056 Hz  
threshold: 2.50  
r\_max: 13649  
c rms: 7118  
n (rms): 446  
offset: 4  
pkr median: 245  
ave median: 264  
nor median: 278  
sdv median: 38  
n median: 126  
peak snr: 33.8 dB  
c snr: 28.2 dB  
sw\_line: 1  
sw\_theta: 1  
freq: 57.0538 Hz  
ship spd: 1.415 m/s  
2.751 knts

Heard Island - Ascension Island (PC2) File: a1271630.sam Ch. 2 Julian:027:16:30:13



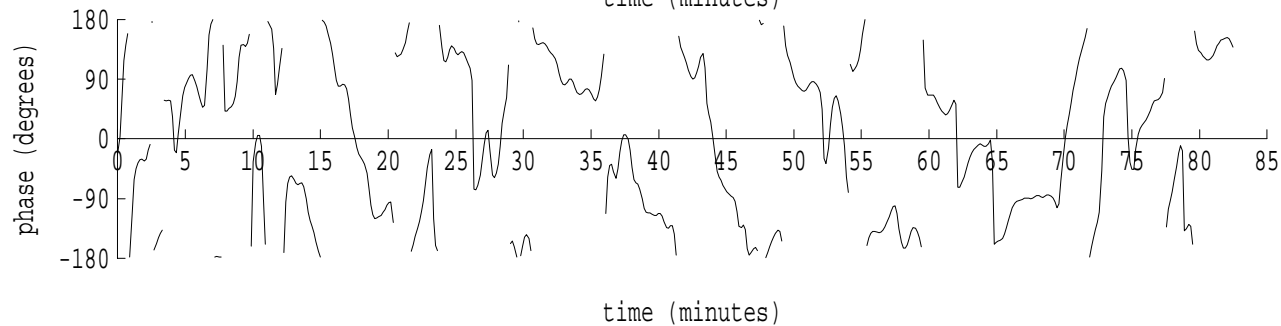
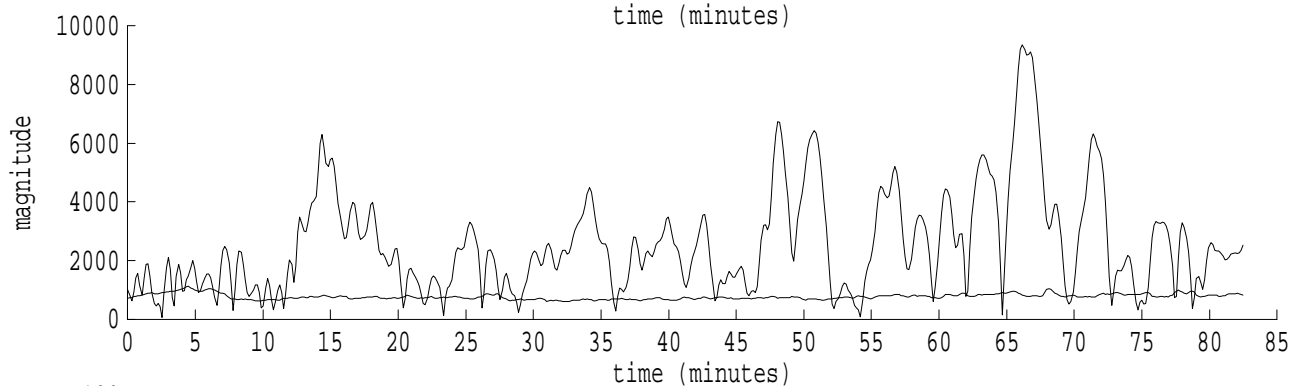
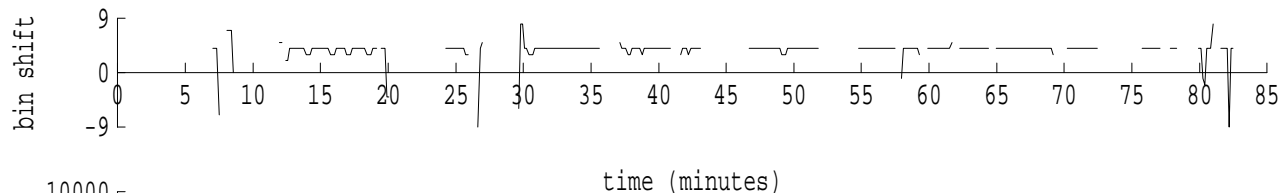
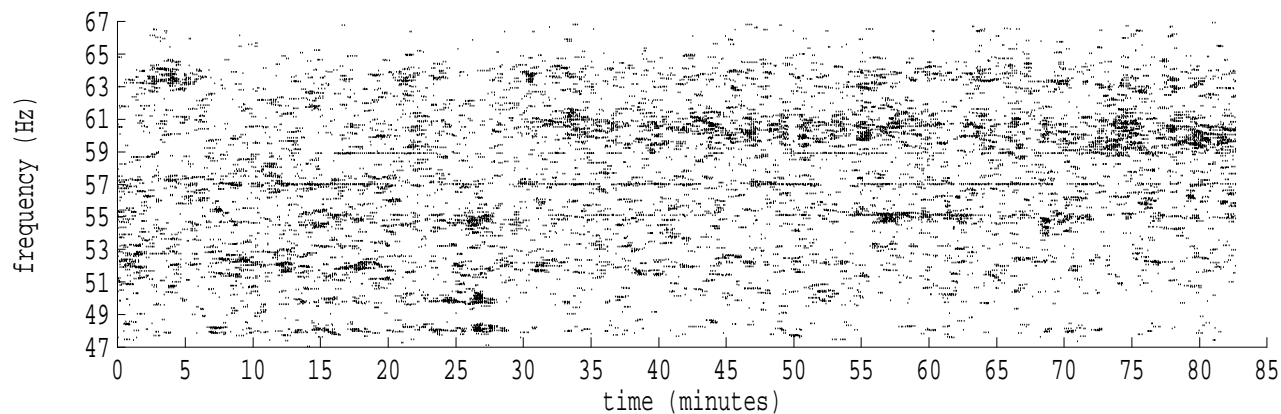
fft size: 16384  
overlap: 7/8  
sw\_hamm: 1  
sample rate: 228 Hz  
bin width: 0.0139 Hz  
int time: 71.86 sec  
bin freq: 57.056 Hz  
threshold: 2.50  
r\_max: 9333  
c rms: 4398  
n (rms): 369  
offset: 4  
pkr median: 665  
ave median: 847  
nor median: 967  
sdv median: 148  
n median: 221  
peak snr: 19.7 dB  
c snr: 13.2 dB  
sw\_line: 1  
sw\_theta: 1  
freq: 57.0533 Hz  
ship spd: 1.401 m/s  
2.725 knts

Heard Island - Ascension Island (PC2) File: a1271630.sam Ch. 3 Julian:027:16:30:13



fft size: 16384  
overlap: 7/8  
sw\_hamm: 1  
sample rate: 228 Hz  
bin width: 0.0139 Hz  
int time: 71.86 sec  
bin freq: 57.056 Hz  
threshold: 2.50  
r\_max: 92406  
c rms: 53035  
n (rms): 462  
offset: 4  
pkr median: 609  
ave median: 677  
nor median: 726  
sdv median: 127  
n median: 96  
peak snr: 42.1 dB  
c snr: 37.3 dB  
sw\_line: 1  
sw\_theta: 1  
freq: 57.0536 Hz  
ship spd: 1.410 m/s  
2.741 knts

Heard Island - Ascension Island (PC2) File: a1271630.sam Ch. 4 Julian:027:16:30:13



fft size: 16384  
overlap: 7/8  
sw\_hamm: 1  
sample rate: 228 Hz  
bin width: 0.0139 Hz  
int time: 71.86 sec  
bin freq: 57.056 Hz  
threshold: 2.50  
r\_max: 9367  
c rms: 3878  
n (rms): 322  
offset: 4  
pkr median: 830  
ave median: 773  
nor median: 787  
sdv median: 104  
n median: 286  
peak snr: 21.5 dB  
c snr: 13.9 dB  
sw\_line: 1  
sw\_theta: 1  
freq: 57.0537 Hz  
ship spd: 1.412 m/s  
2.745 knts