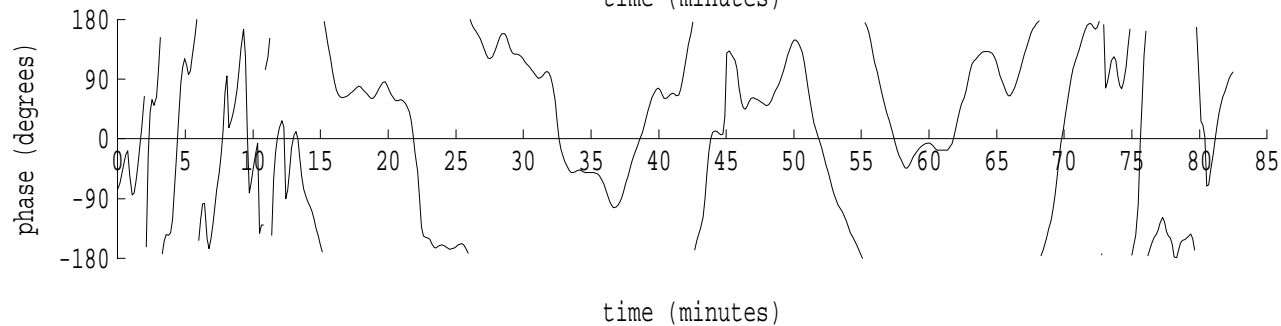
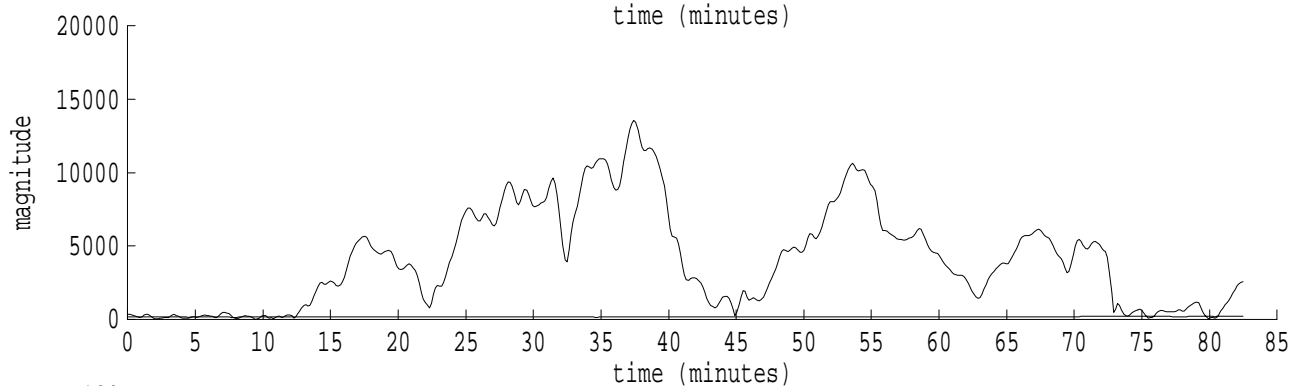
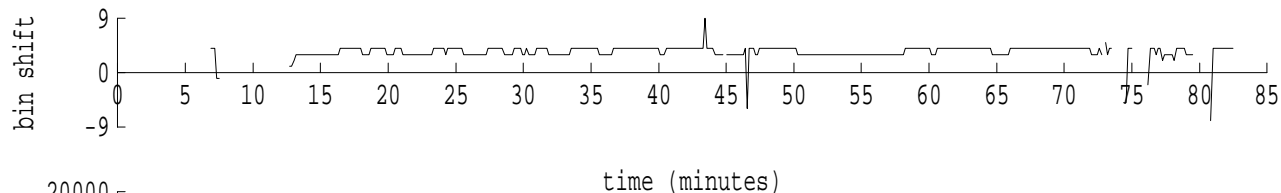
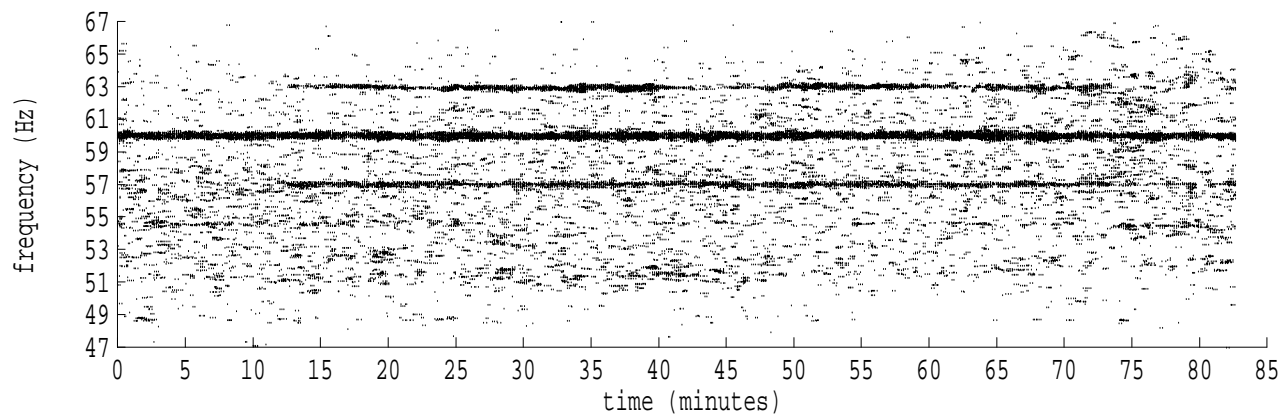
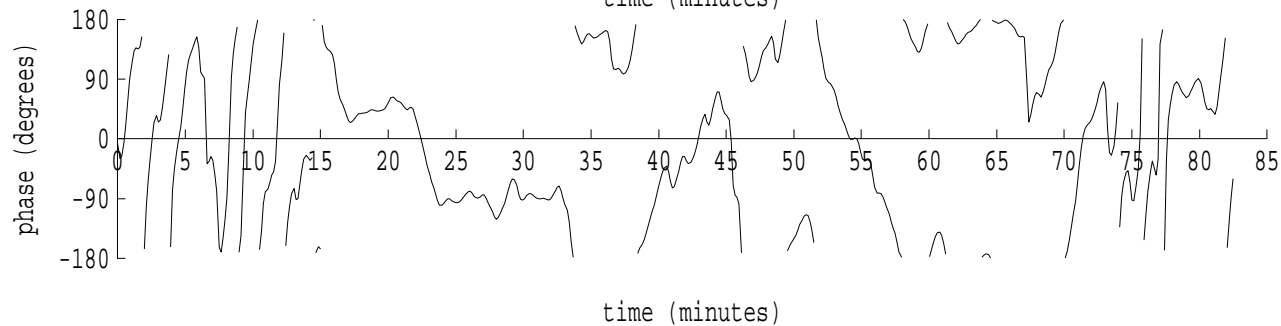
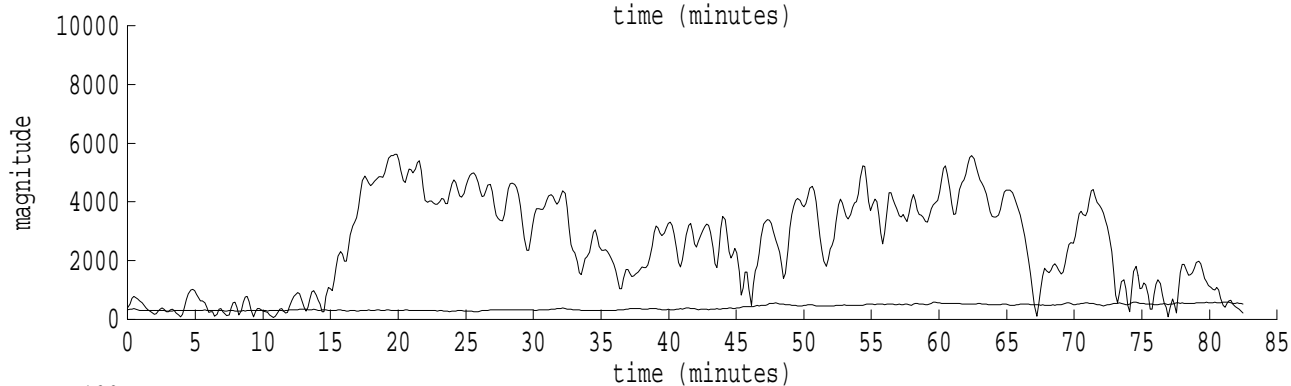
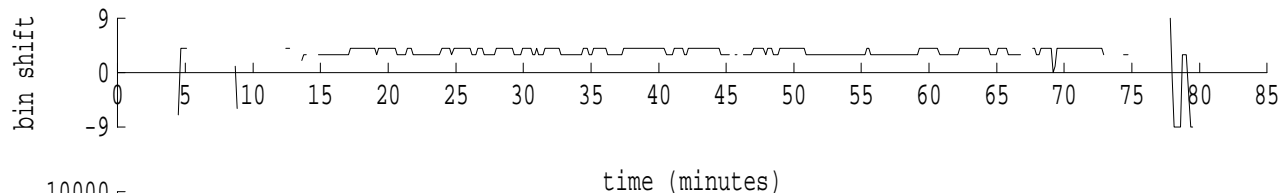
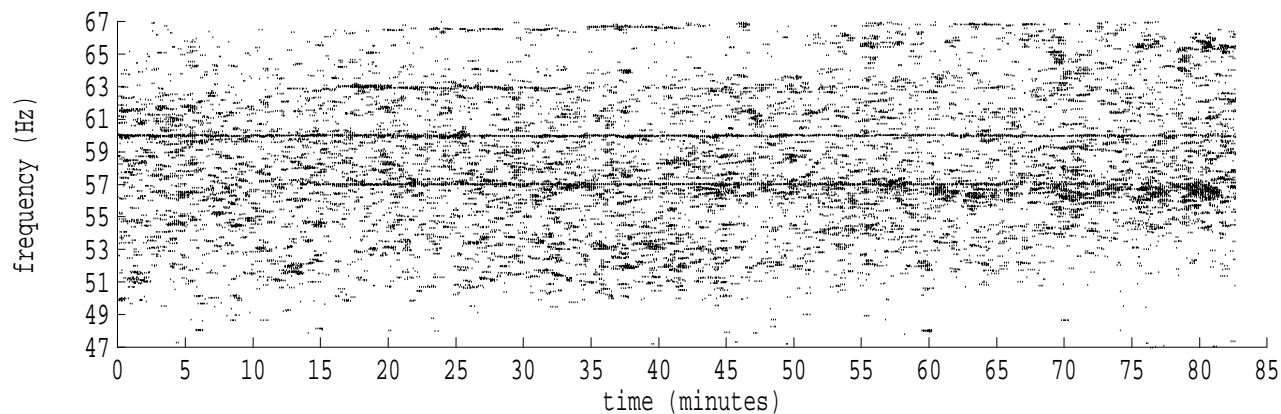


Heard Island - Ascension Island (PC2) File: a1270130.sam Ch. 1 Julian:027:01:30:13



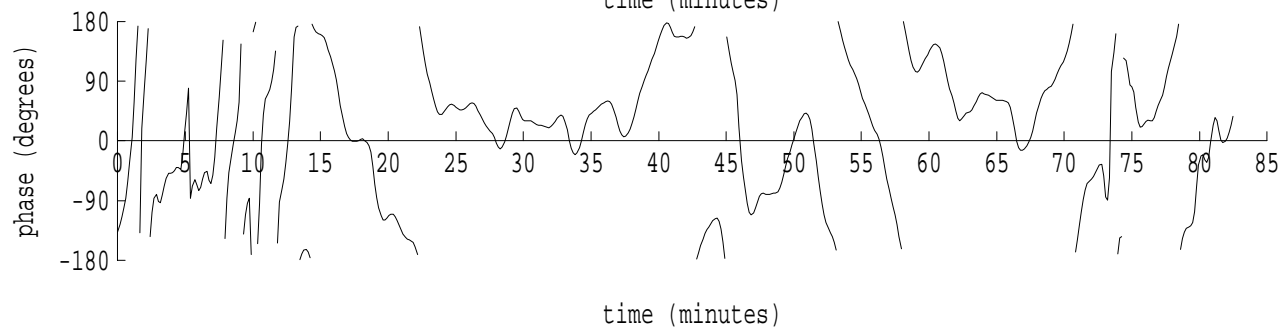
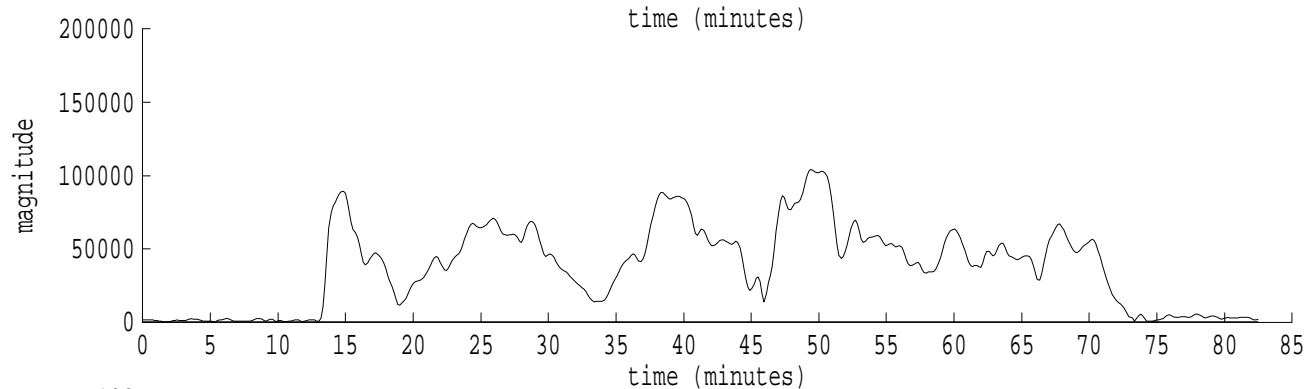
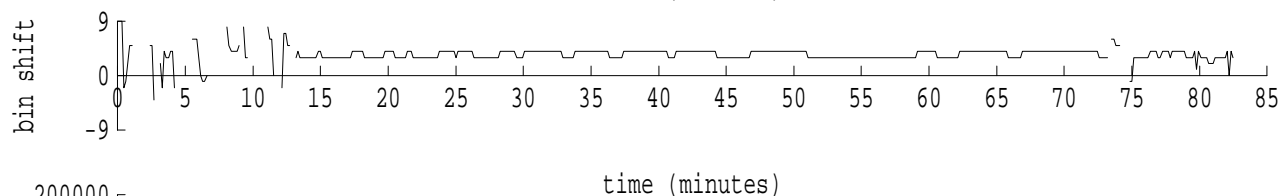
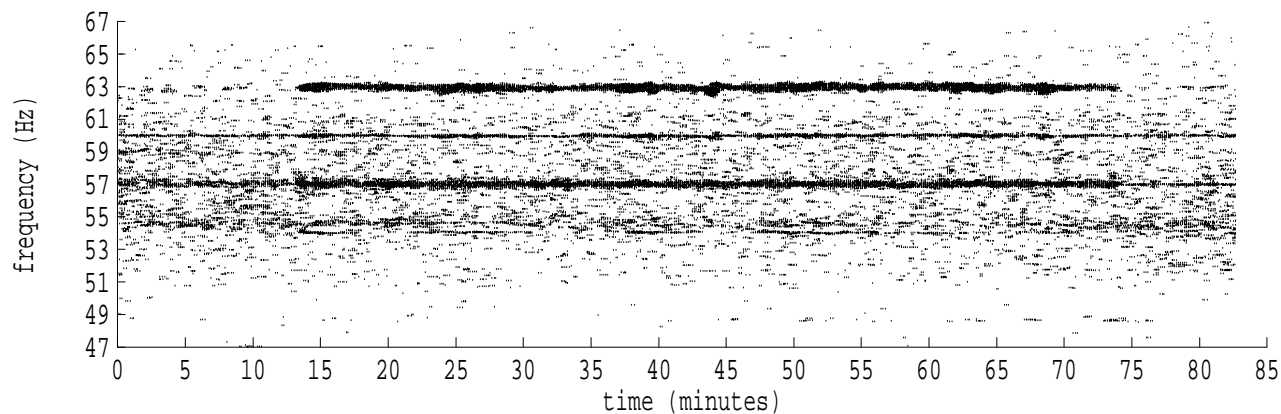
fft size: 16384  
overlap: 7/8  
sw\_hamm: 1  
sample rate: 228 Hz  
bin width: 0.0139 Hz  
int time: 71.86 sec  
bin freq: 57.056 Hz  
threshold: 2.50  
r\_max: 13568  
c rms: 5862  
n (rms): 450  
offset: 4  
pkr median: 172  
ave median: 165  
nor median: 165  
sdv median: 22  
n median: 120  
peak snr: 38.3 dB  
c snr: 31.0 dB  
sw\_line: 1  
sw\_theta: 1  
freq: 57.0497 Hz  
ship spd: 1.306 m/s  
2.540 knts

Heard Island - Ascension Island (PC2) File: a1270130.sam Ch. 2 Julian:027:01:30:13



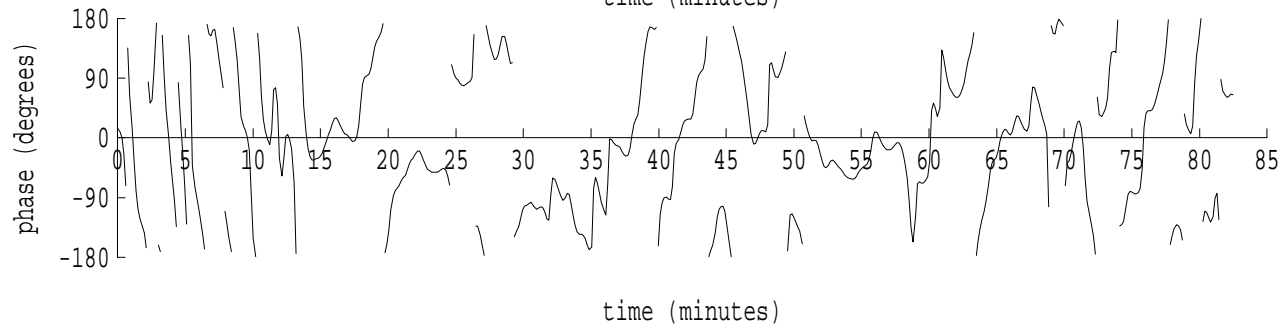
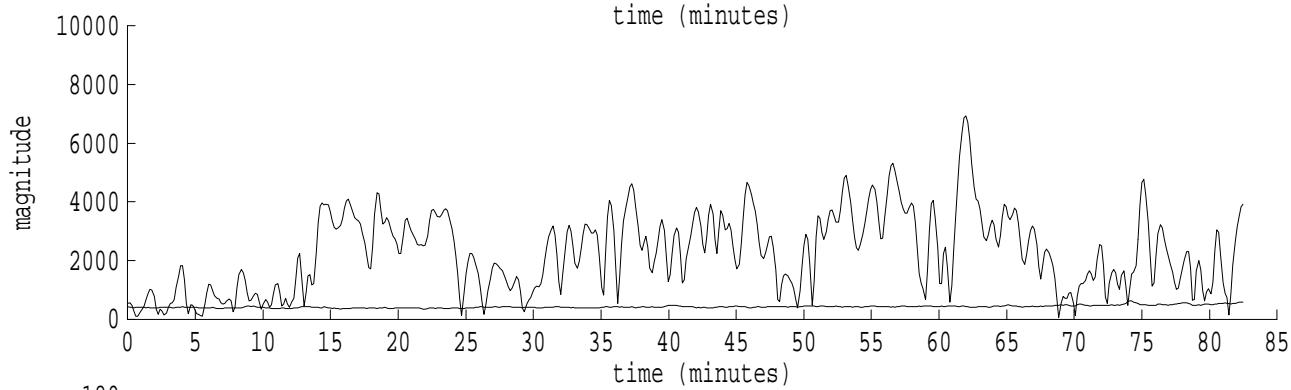
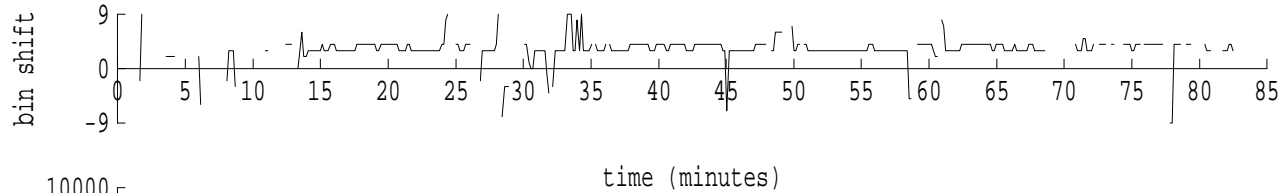
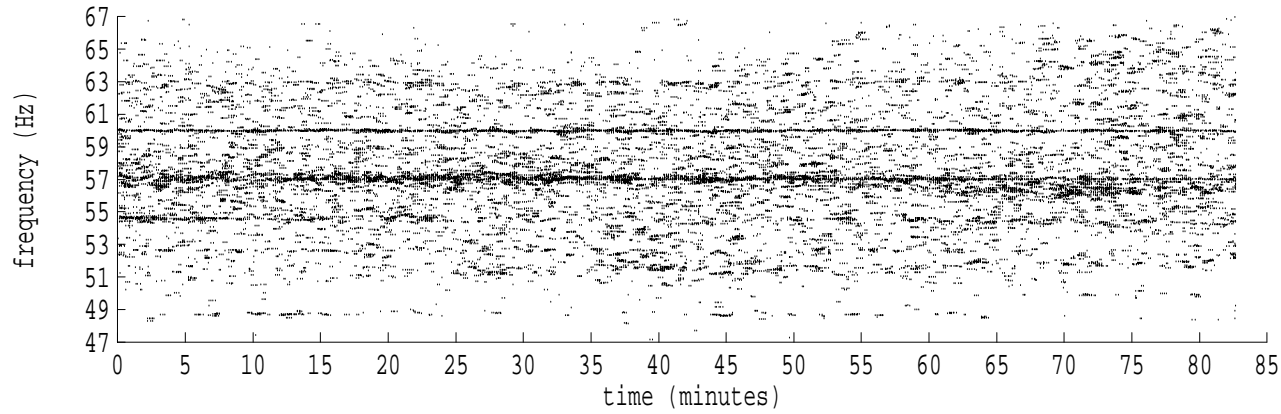
fft size: 16384  
overlap: 7/8  
sw\_hamm: 1  
sample rate: 228 Hz  
bin width: 0.0139 Hz  
int time: 71.86 sec  
bin freq: 57.056 Hz  
threshold: 2.50  
r\_max: 6130  
c rms: 3480  
n (rms): 410  
offset: 4  
pkr median: 306  
ave median: 404  
nor median: 396  
sdv median: 114  
n median: 163  
peak snr: 23.8 dB  
c snr: 18.9 dB  
sw\_line: 1  
sw\_theta: 1  
freq: 57.0492 Hz  
ship spd: 1.293 m/s  
2.514 knts

Heard Island - Ascension Island (PC2) File: a1270130.sam Ch. 3 Julian:027:01:30:13



fft size: 16384  
overlap: 7/8  
sw\_hamm: 1  
sample rate: 228 Hz  
bin width: 0.0139 Hz  
int time: 71.86 sec  
bin freq: 57.056 Hz  
threshold: 2.50  
r\_max: 109801  
c rms: 48681  
n (rms): 506  
offset: 4  
pkr median: 470  
ave median: 438  
nor median: 433  
sdv median: 21  
n median: 55  
peak snr: 48.1 dB  
c snr: 41.0 dB  
sw\_line: 1  
sw\_theta: 1  
freq: 57.0495 Hz  
ship spd: 1.300 m/s  
2.528 knts

Heard Island - Ascension Island (PC2) File: a1270130.sam Ch. 4 Julian:027:01:30:13



fft size: 16384  
overlap: 7/8  
sw\_hamm: 1  
sample rate: 228 Hz  
bin width: 0.0139 Hz  
int time: 71.86 sec  
bin freq: 57.042 Hz  
threshold: 2.50  
r\_max: 6942  
c rms: 2982  
n (rms): 416  
offset: 3  
pkr median: 437  
ave median: 429  
nor median: 433  
sdv median: 53  
n median: 165  
peak snr: 24.1 dB  
c snr: 16.7 dB  
sw\_line: 1  
sw\_theta: 1  
freq: 57.0464 Hz  
ship spd: 1.220 m/s  
2.373 knts