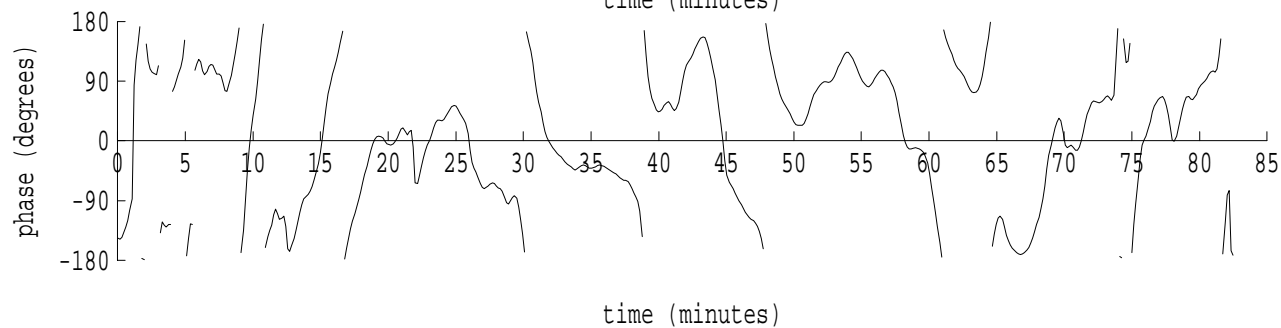
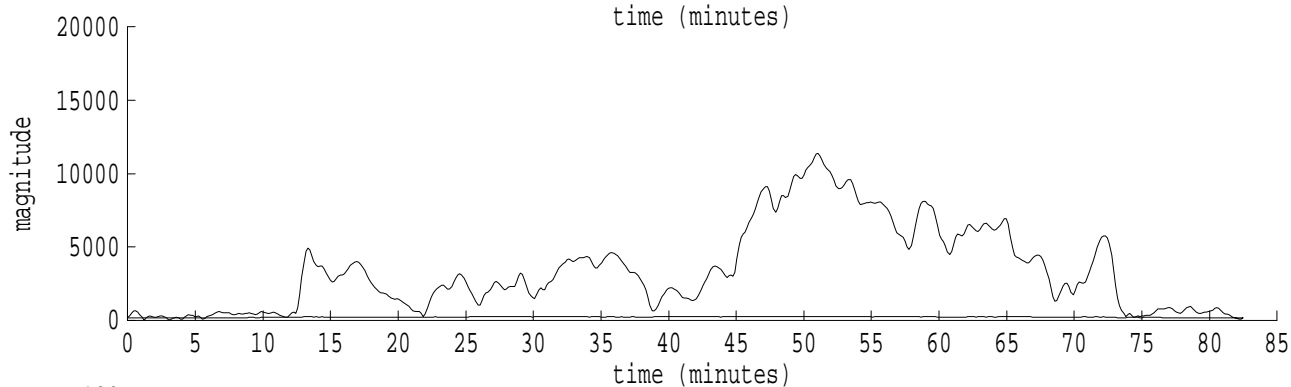
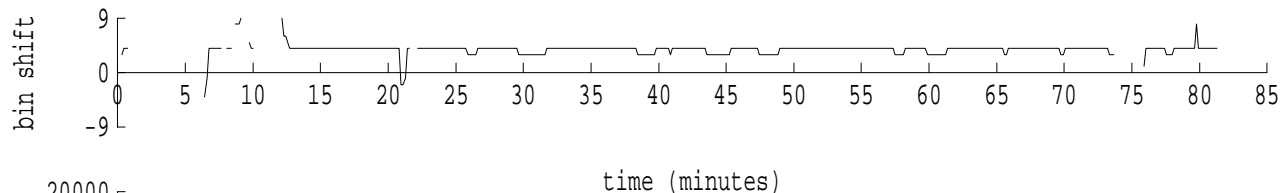
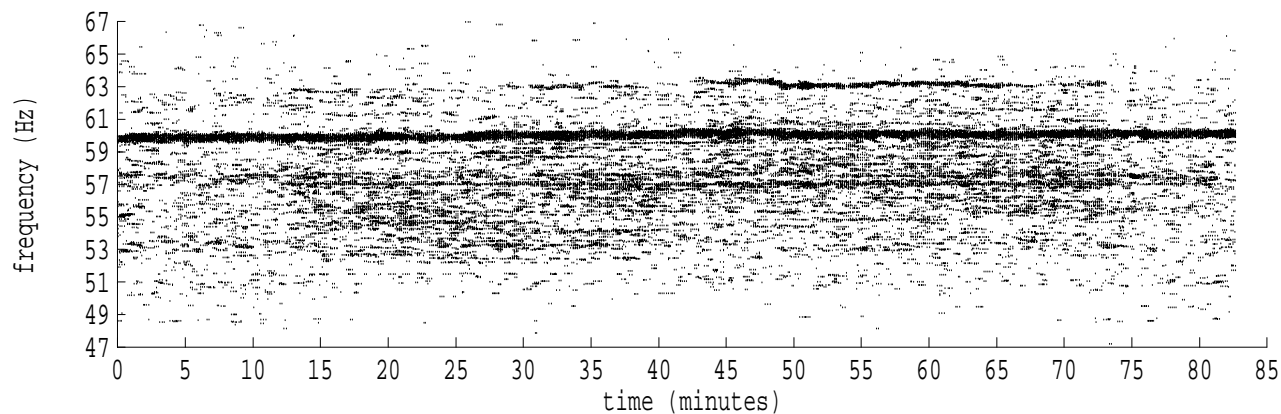
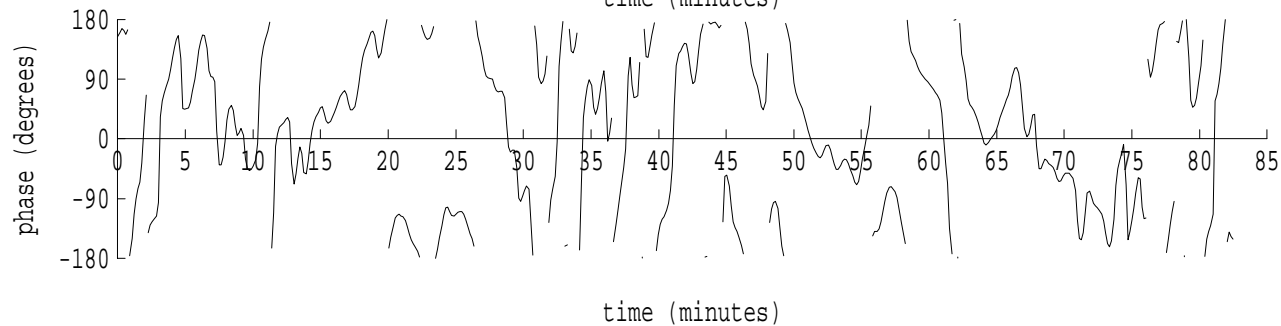
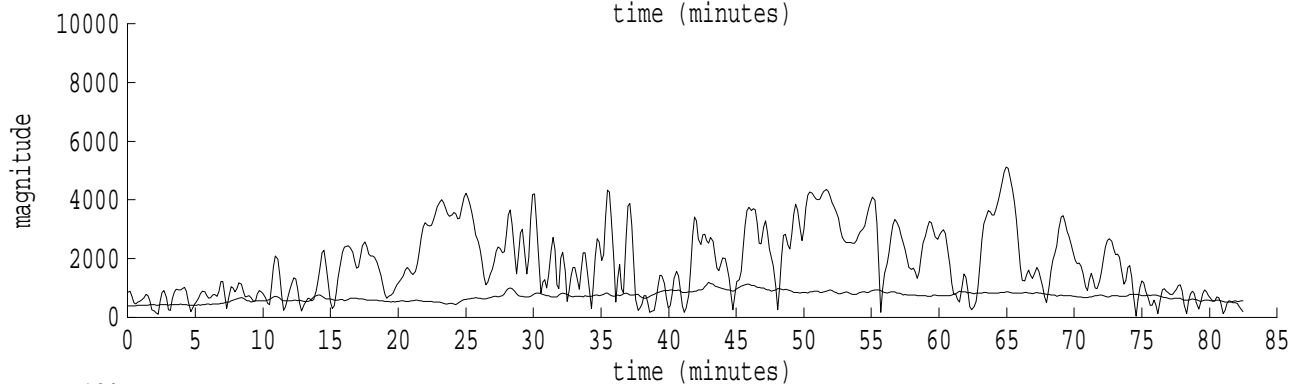
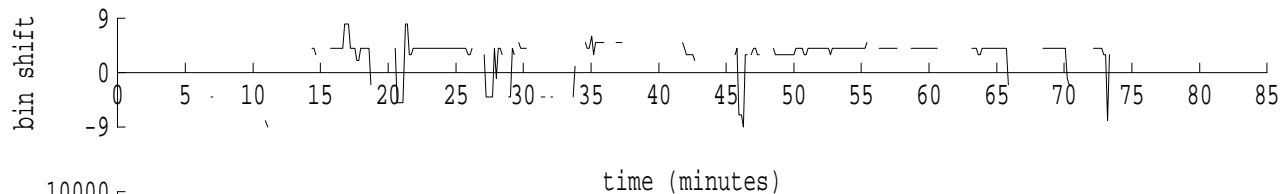
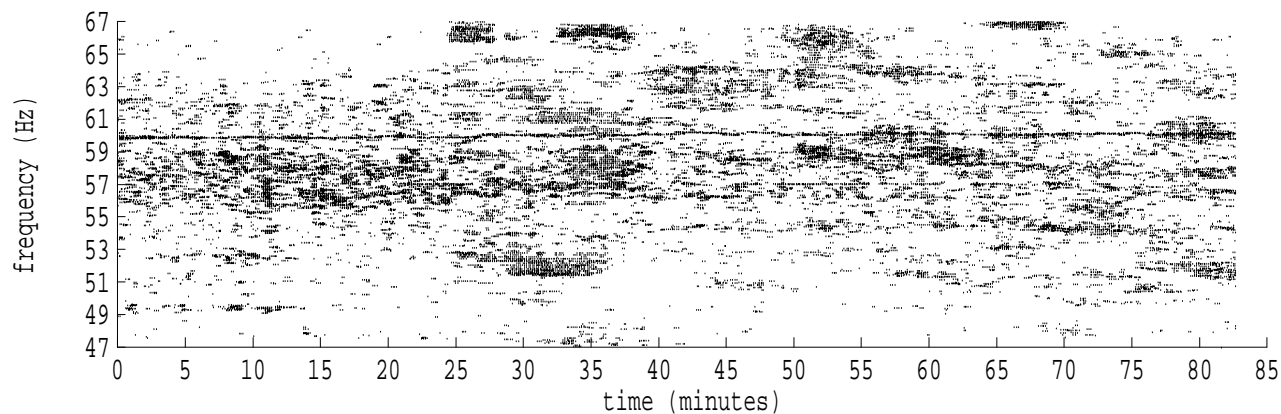


Heard Island - Ascension Island (PC2) File: a1262230.sam Ch. 1 Julian:026:22:30:13



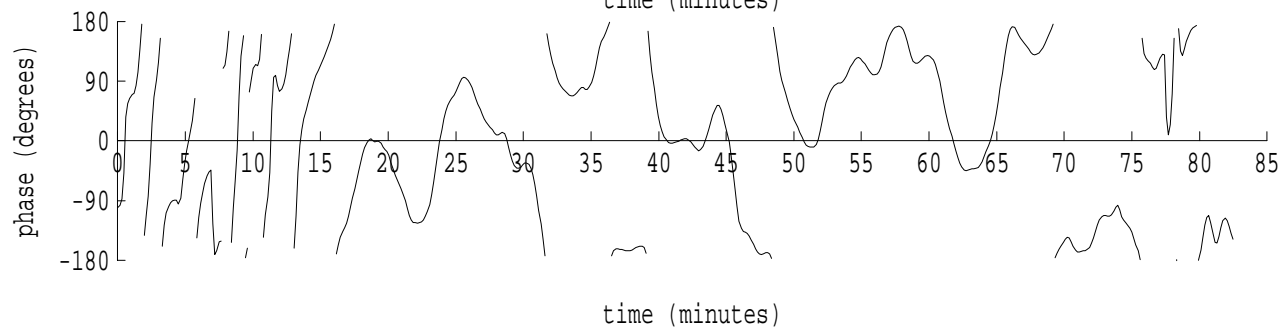
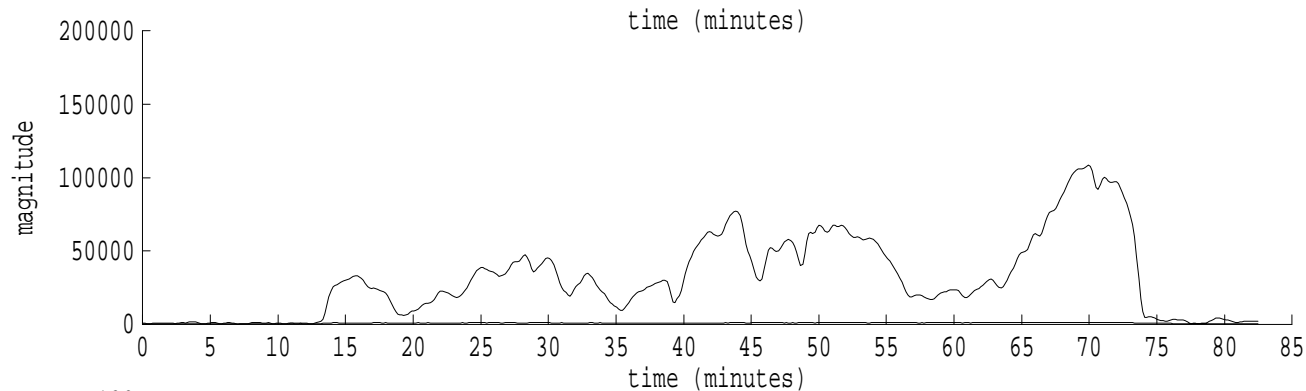
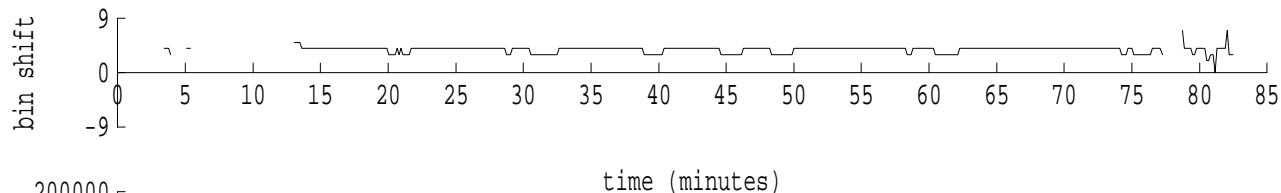
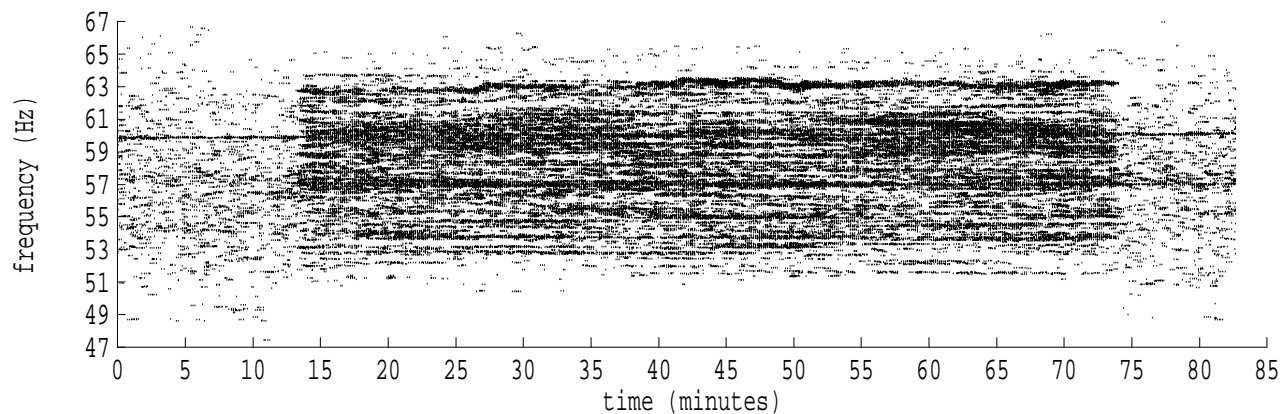
fft size: 16384  
overlap: 7/8  
sw\_hamm: 1  
sample rate: 228 Hz  
bin width: 0.0139 Hz  
int time: 71.86 sec  
bin freq: 57.056 Hz  
threshold: 2.50  
r\_max: 11377  
c rms: 4792  
n (rms): 470  
offset: 4  
pkr median: 251  
ave median: 217  
nor median: 177  
sdv median: 19  
n median: 112  
peak snr: 36.1 dB  
c snr: 28.6 dB  
sw\_line: 1  
sw\_theta: 1  
freq: 57.0517 Hz  
ship spd: 1.358 m/s  
2.640 knts

Heard Island - Ascension Island (PC2) File: a1262230.sam Ch. 2 Julian:026:22:30:13



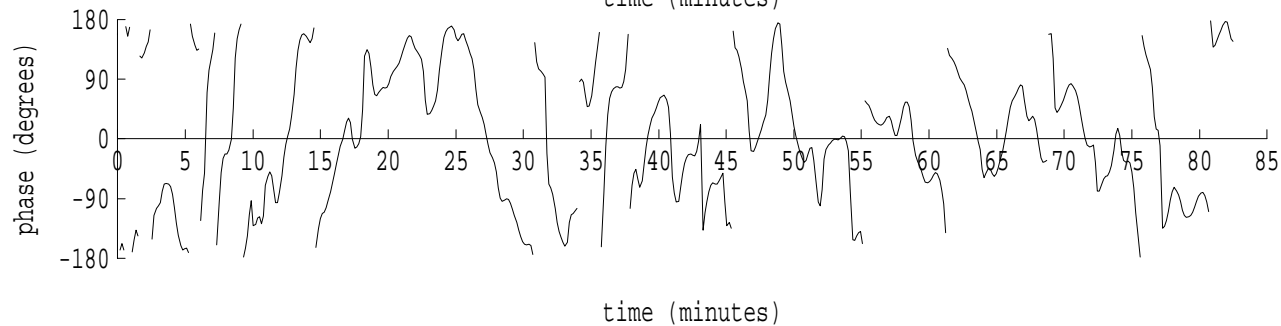
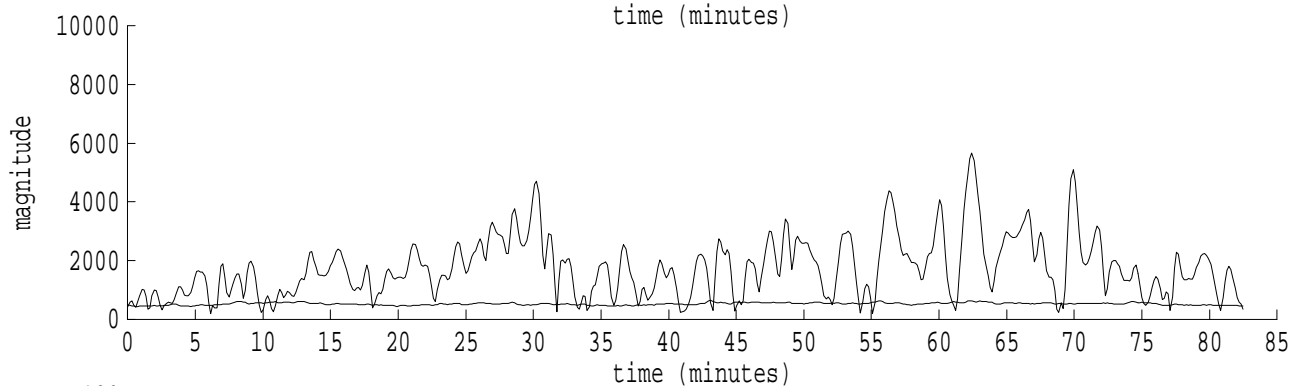
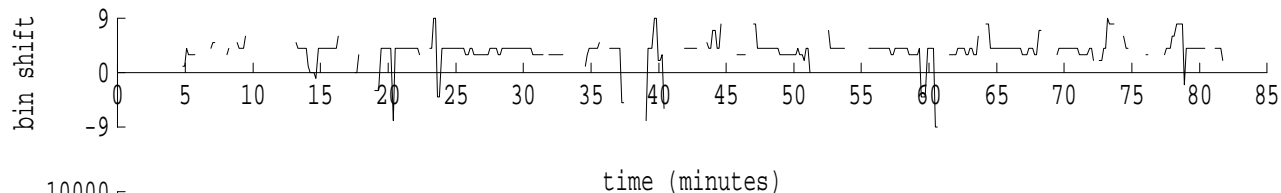
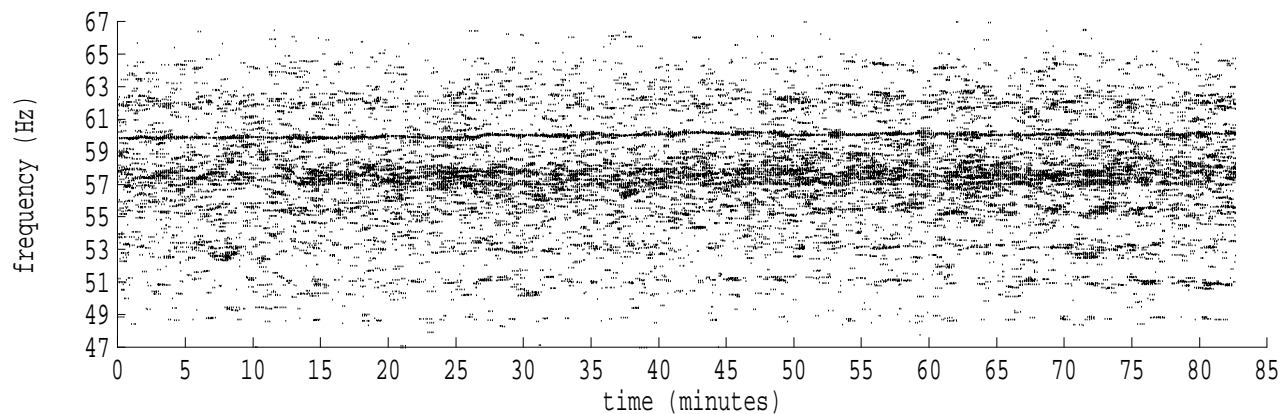
fft size: 16384  
overlap: 7/8  
sw\_hamm: 1  
sample rate: 228 Hz  
bin width: 0.0139 Hz  
int time: 71.86 sec  
bin freq: 57.056 Hz  
threshold: 2.50  
r\_max: 5125  
c rms: 3046  
n (rms): 240  
offset: 4  
pkr median: 870  
ave median: 712  
nor median: 690  
sdv median: 169  
n median: 364  
peak snr: 17.4 dB  
c snr: 12.9 dB  
sw\_line: 1  
sw\_theta: 1  
freq: 57.0529 Hz  
ship spd: 1.390 m/s  
2.703 knts

Heard Island - Ascension Island (PC2) File: a1262230.sam Ch. 3 Julian:026:22:30:13



fft size: 16384  
overlap: 7/8  
sw\_hamm: 1  
sample rate: 228 Hz  
bin width: 0.0139 Hz  
int time: 71.86 sec  
bin freq: 57.056 Hz  
threshold: 2.50  
r\_max: 108369  
c rms: 45208  
n (rms): 463  
offset: 4  
pkr median: 1091  
ave median: 864  
nor median: 478  
sdv median: 52  
n median: 95  
peak snr: 47.1 dB  
c snr: 39.5 dB  
sw\_line: 1  
sw\_theta: 1  
freq: 57.0512 Hz  
ship spd: 1.346 m/s  
2.617 knts

Heard Island - Ascension Island (PC2) File: a1262230.sam Ch. 4 Julian:026:22:30:13



fft size: 16384  
overlap: 7/8  
sw\_hamm: 1  
sample rate: 228 Hz  
bin width: 0.0139 Hz  
int time: 71.86 sec  
bin freq: 57.056 Hz  
threshold: 2.50  
r\_max: 5671  
c rms: 2434  
n (rms): 350  
offset: 4  
pkr median: 621  
ave median: 526  
nor median: 522  
sdv median: 47  
n median: 261  
peak snr: 20.7 dB  
c snr: 13.4 dB  
sw\_line: 1  
sw\_theta: 1  
freq: 57.0525 Hz  
ship spd: 1.380 m/s  
2.684 knts