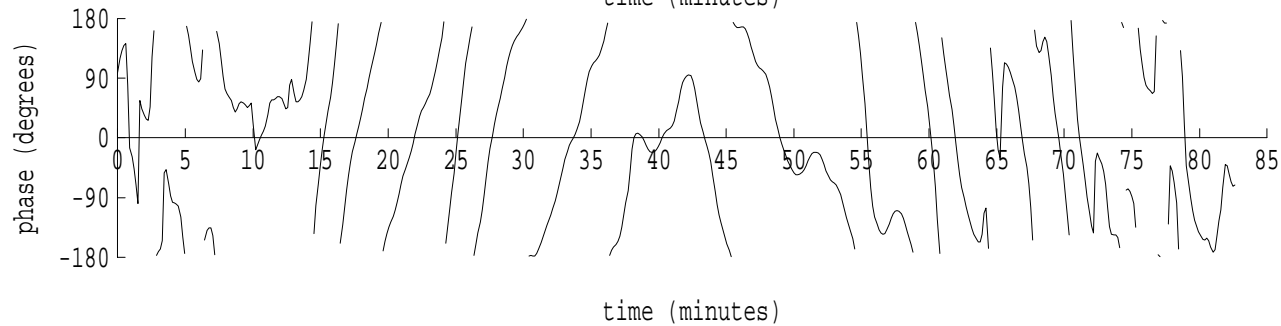
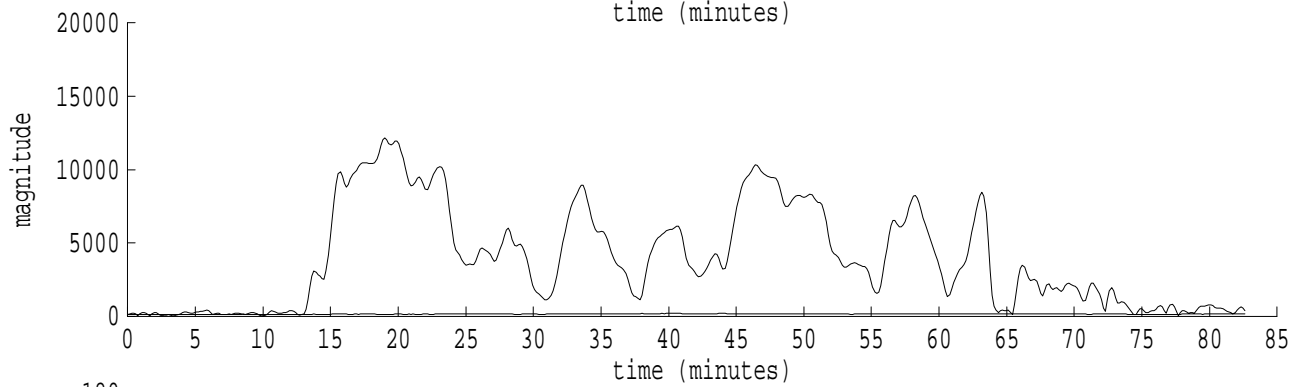
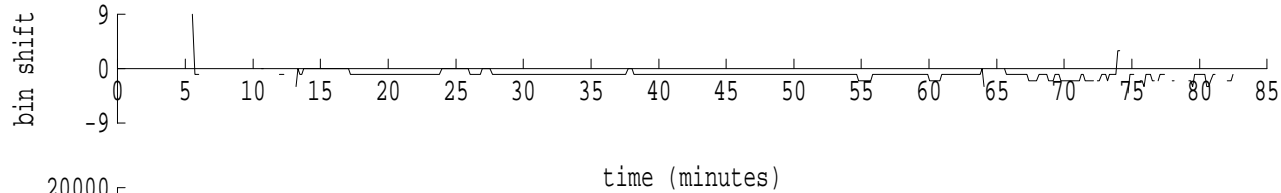
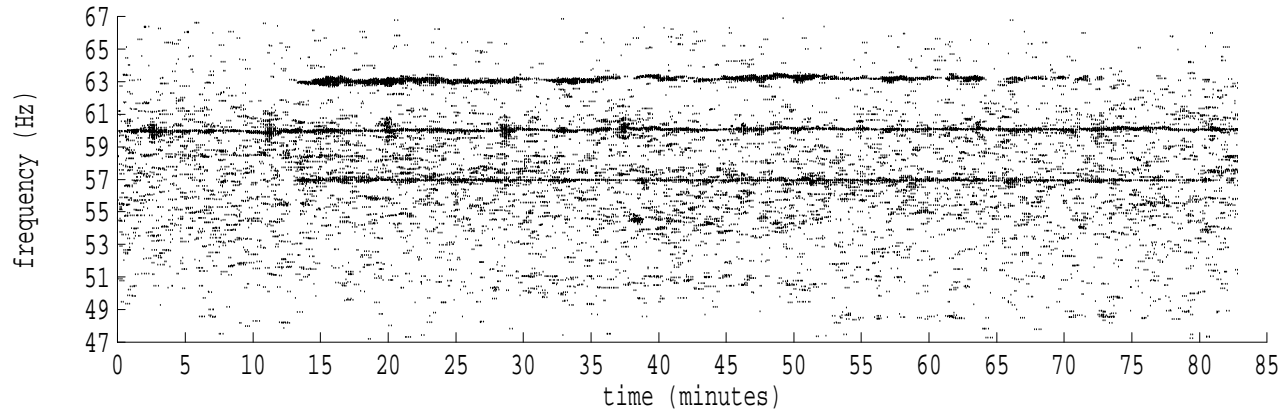
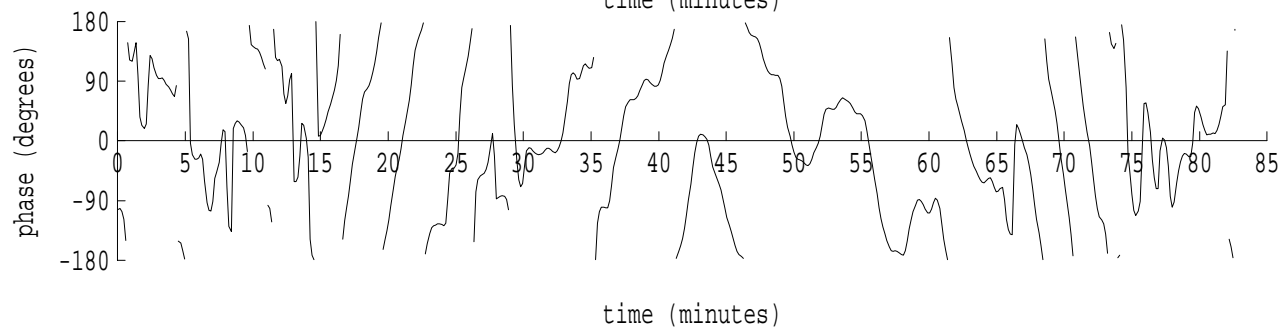
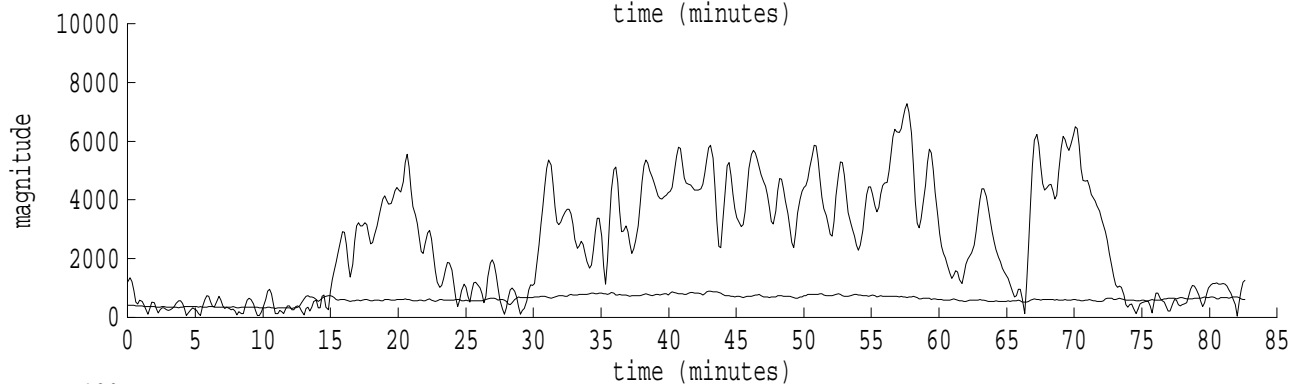
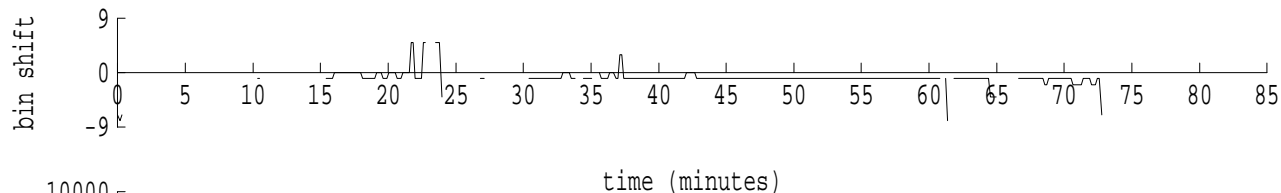
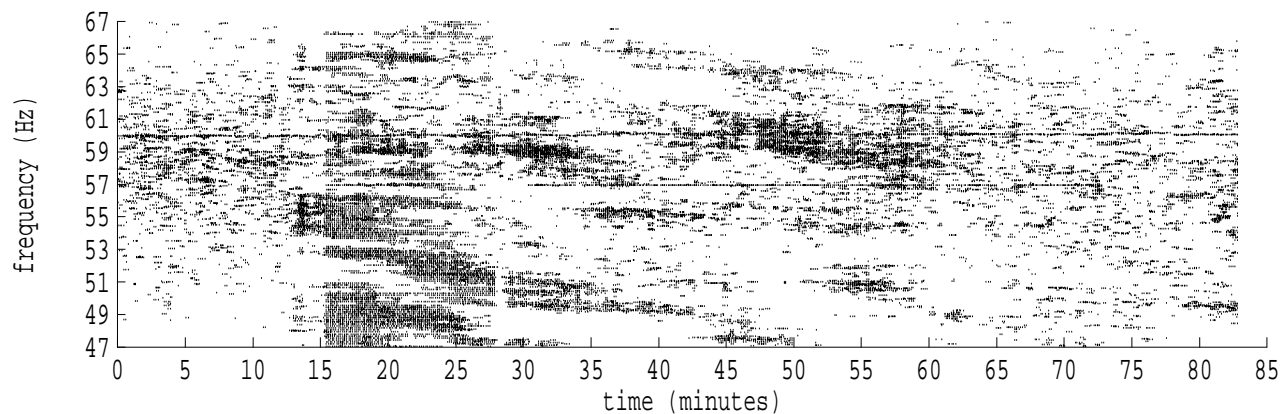


Heard Island - Ascension Island (PC2) File: a1260130.sam Ch. 1 Julian:026:01:30:13



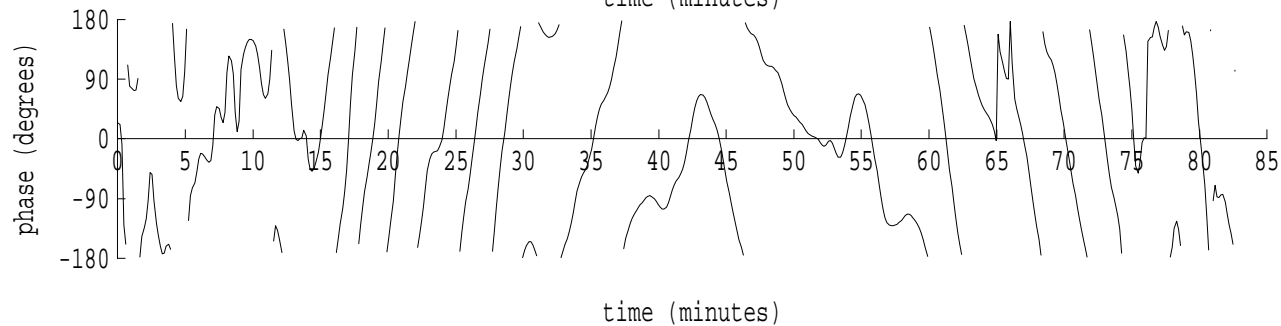
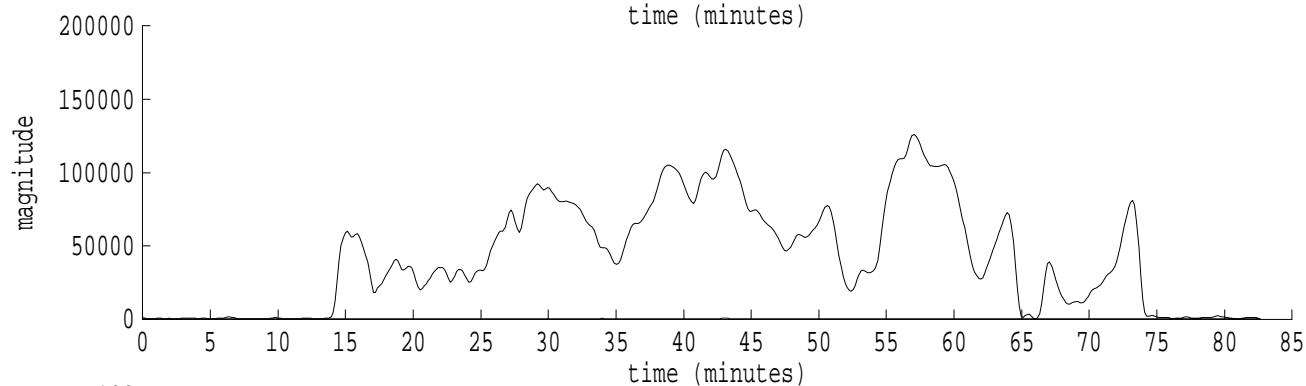
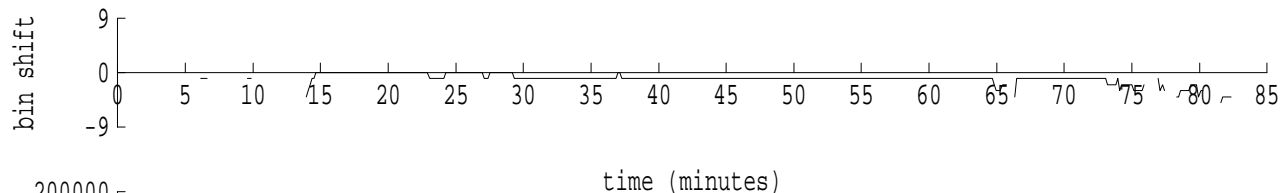
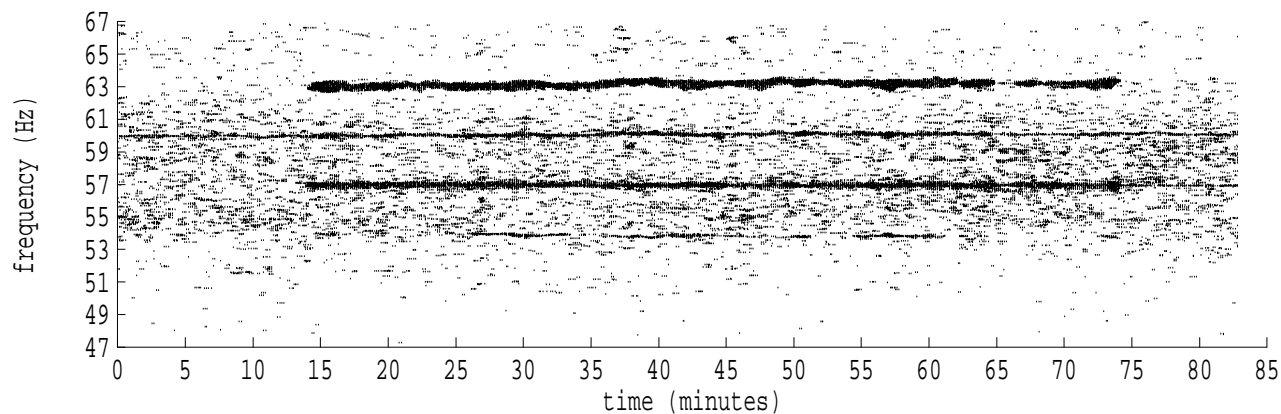
fft size: 16384  
overlap: 7/8  
sw\_hamm: 1  
sample rate: 228 Hz  
bin width: 0.0139 Hz  
int time: 71.86 sec  
bin freq: 56.986 Hz  
threshold: 2.50  
r\_max: 13935  
c rms: 5782  
n (rms): 444  
offset: -1  
pkr median: 141  
ave median: 151  
nor median: 137  
sdv median: 11  
n median: 127  
peak snr: 40.1 dB  
c snr: 32.5 dB  
sw\_line: 1  
sw\_theta: 1  
freq: 56.9872 Hz  
ship spd: -0.336 m/s  
-0.654 knts

Heard Island - Ascension Island (PC2) File: a1260130.sam Ch. 2 Julian:026:01:30:13



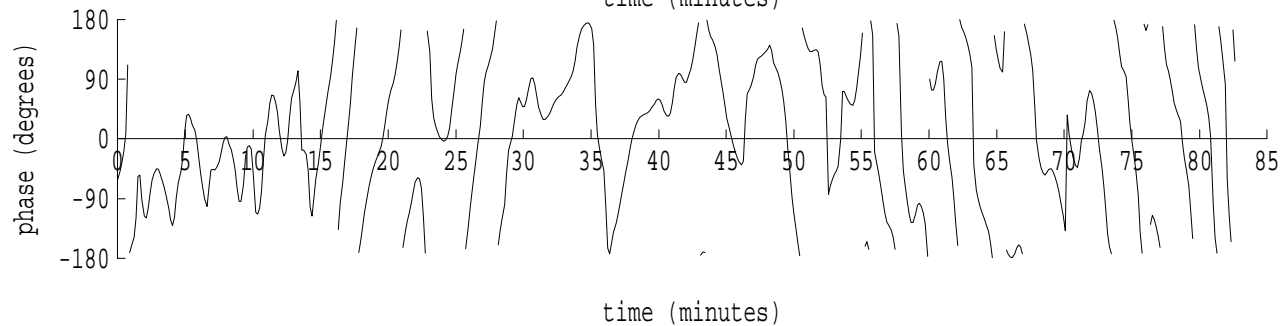
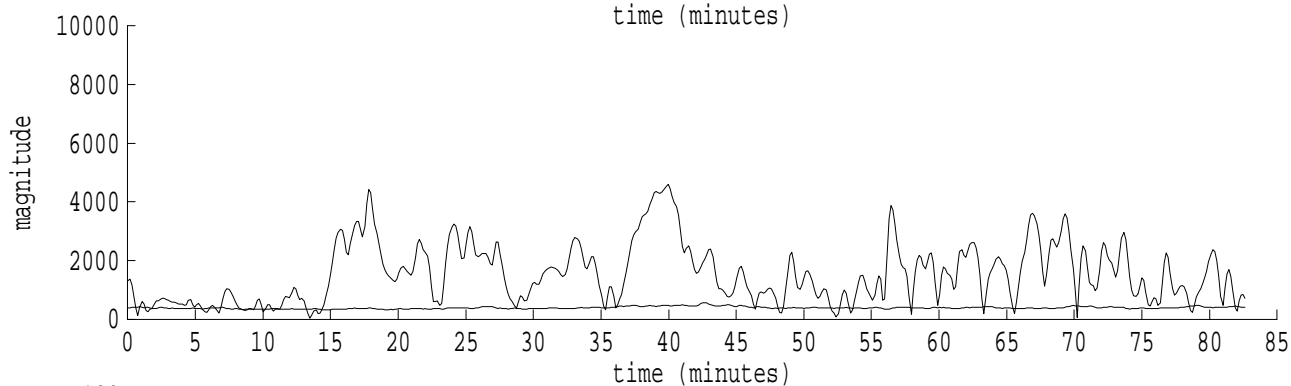
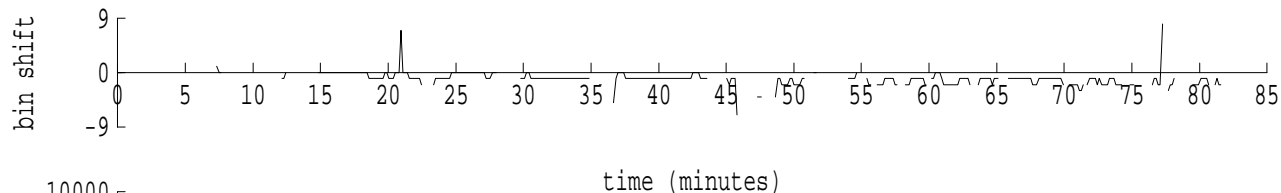
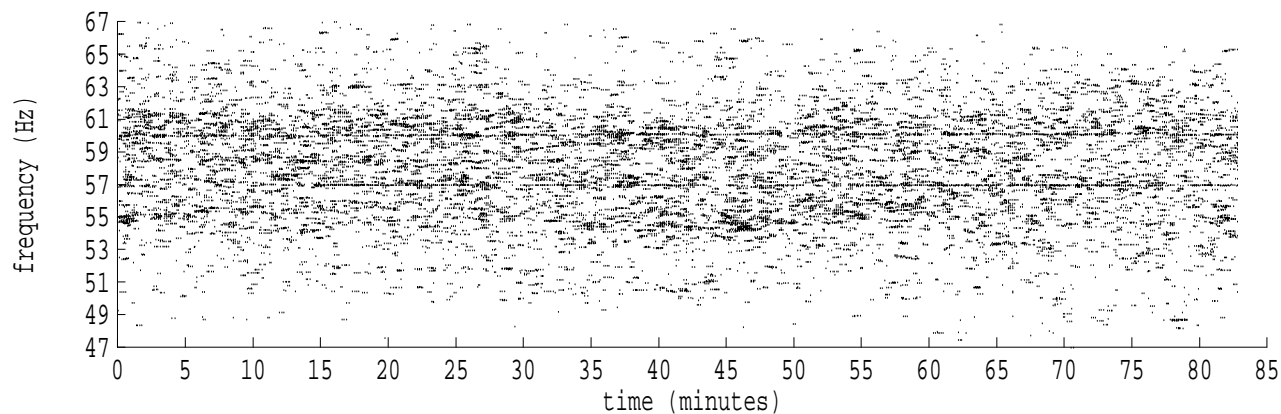
fft size: 16384  
overlap: 7/8  
sw\_hamm: 1  
sample rate: 228 Hz  
bin width: 0.0139 Hz  
int time: 71.86 sec  
bin freq: 56.986 Hz  
threshold: 2.50  
r\_max: 7291  
c rms: 4058  
n (rms): 326  
offset: -1  
pkr median: 672  
ave median: 615  
nor median: 532  
sdv median: 145  
n median: 250  
peak snr: 22.7 dB  
c snr: 17.6 dB  
sw\_line: 1  
sw\_theta: 1  
freq: 56.9874 Hz  
ship spd: -0.332 m/s  
-0.646 knts

Heard Island - Ascension Island (PC2) File: a1260130.sam Ch. 3 Julian:026:01:30:13



fft size: 16384  
overlap: 7/8  
sw\_hamm: 1  
sample rate: 228 Hz  
bin width: 0.0139 Hz  
int time: 71.86 sec  
bin freq: 56.986 Hz  
threshold: 2.50  
r\_max: 125955  
c rms: 62063  
n (rms): 444  
offset: -1  
pkr median: 436  
ave median: 422  
nor median: 398  
sdv median: 21  
n median: 122  
peak snr: 50.0 dB  
c snr: 43.9 dB  
sw\_line: 1  
sw\_theta: 1  
freq: 56.9871 Hz  
ship spd: -0.338 m/s  
-0.658 knts

Heard Island - Ascension Island (PC2) File: a1260130.sam Ch. 4 Julian:026:01:30:13



fft size: 16384  
overlap: 7/8  
sw\_hamm: 1  
sample rate: 228 Hz  
bin width: 0.0139 Hz  
int time: 71.86 sec  
bin freq: 56.986 Hz  
threshold: 2.50  
r\_max: 5940  
c rms: 2274  
n (rms): 345  
offset: -1  
pkr median: 374  
ave median: 392  
nor median: 385  
sdv median: 34  
n median: 250  
peak snr: 23.7 dB  
c snr: 15.4 dB  
sw\_line: 1  
sw\_theta: 1  
freq: 56.9873 Hz  
ship spd: -0.333 m/s  
-0.647 knts