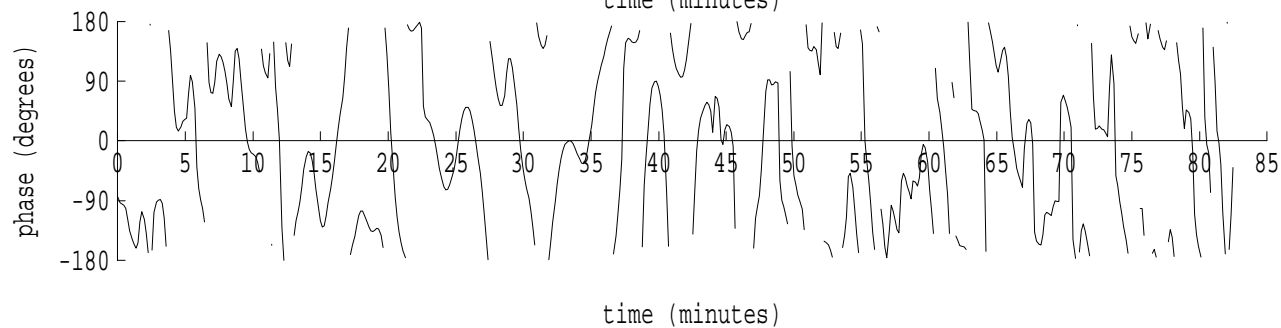
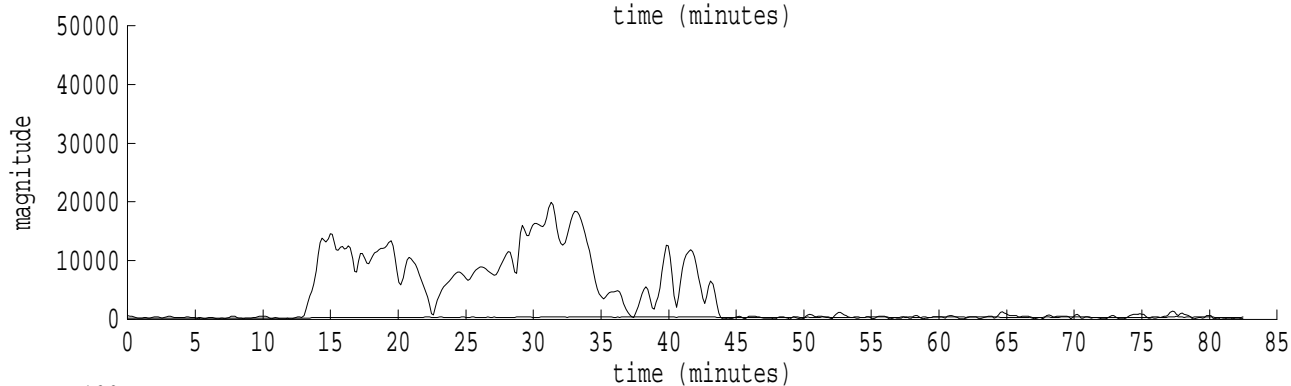
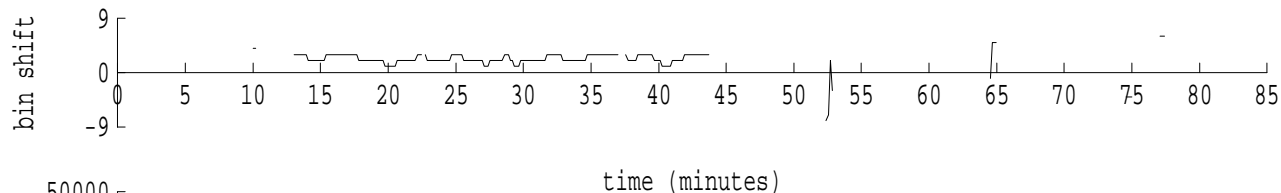
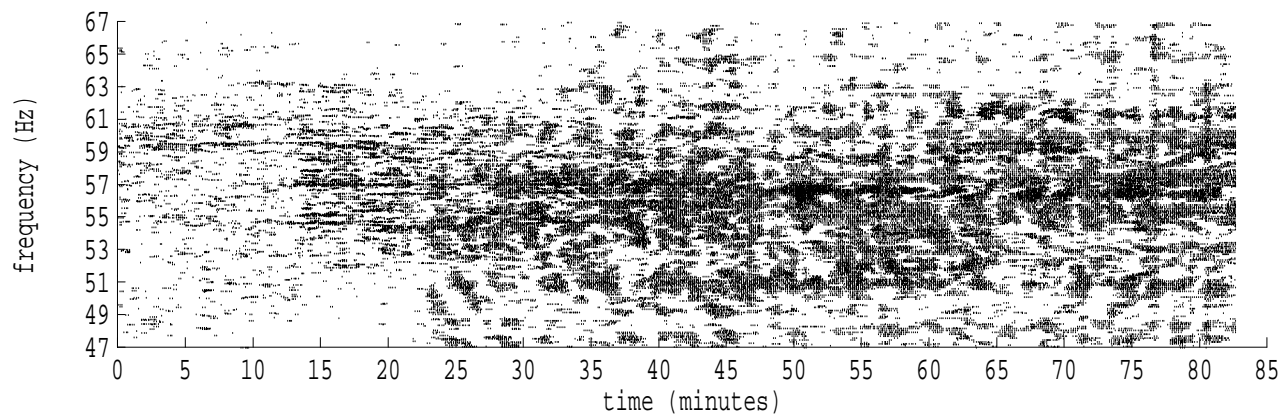
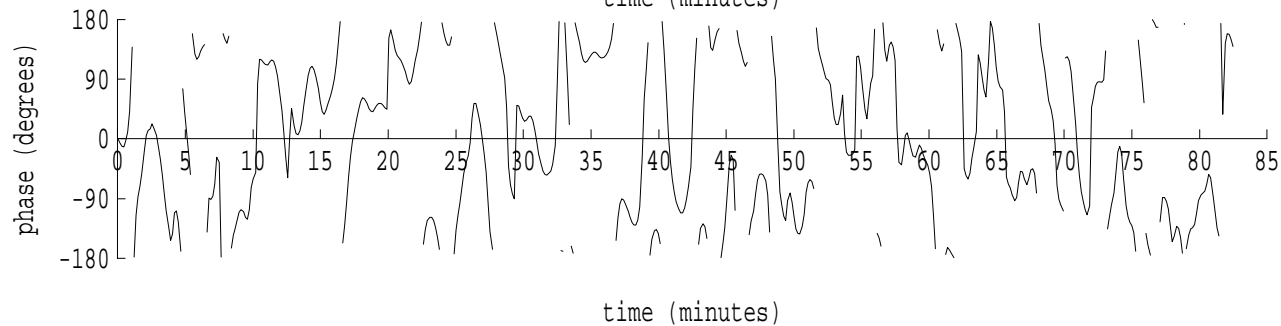
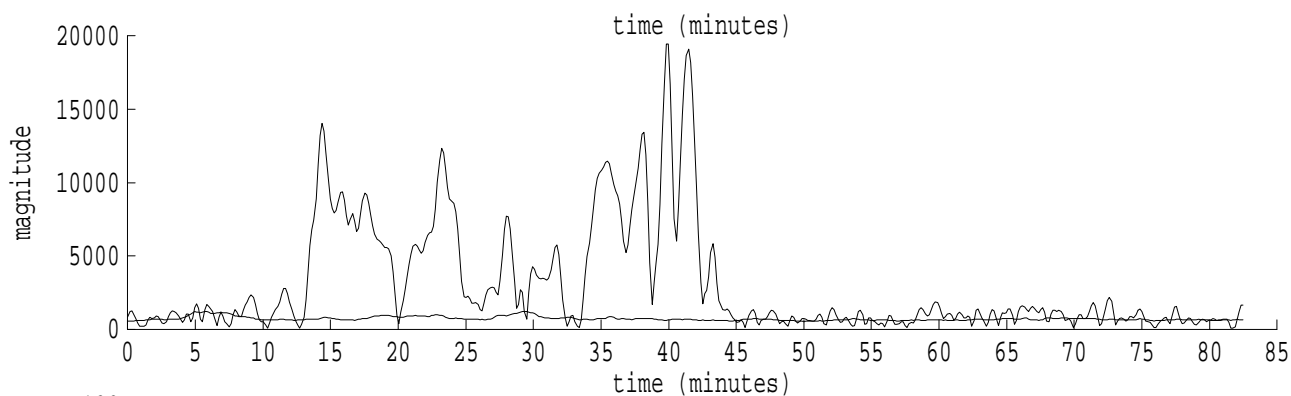
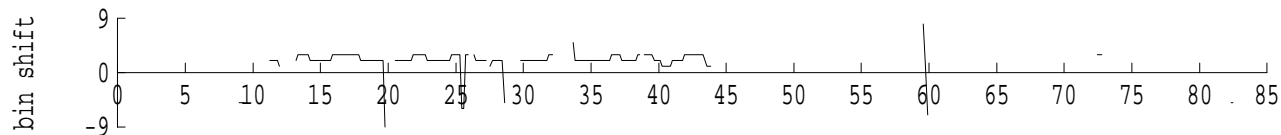
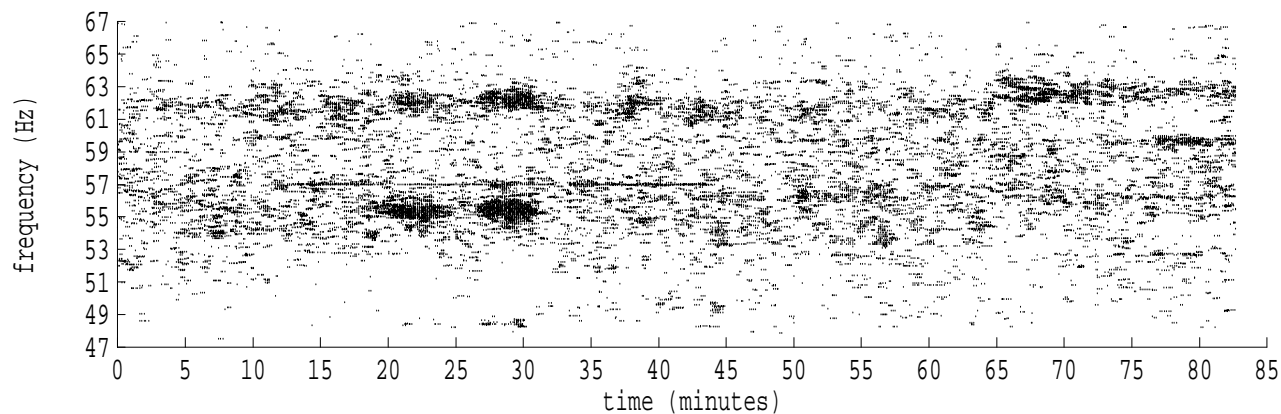


Heard Island - Ascension Island (PC1) File: a0311030.sam Ch. 1 Julian:031:10:30:13



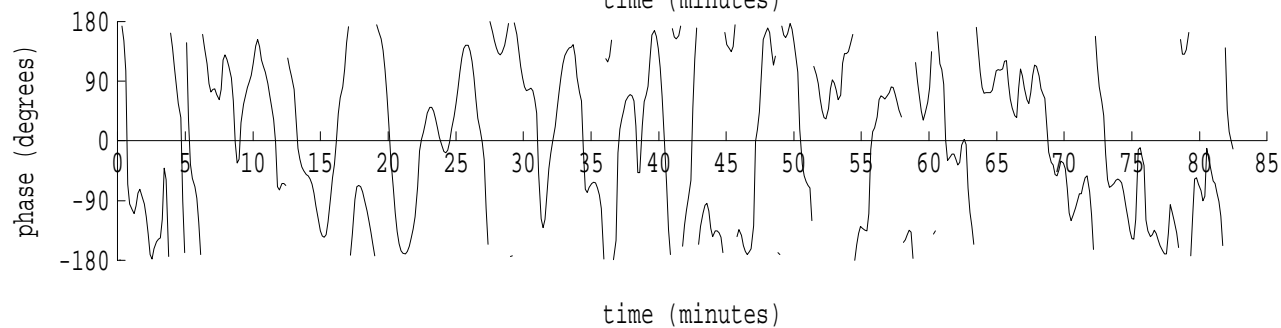
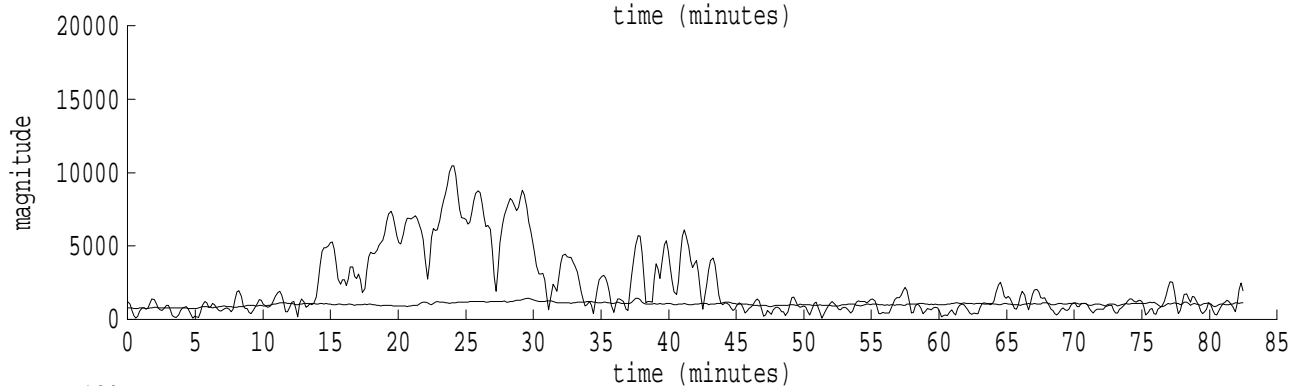
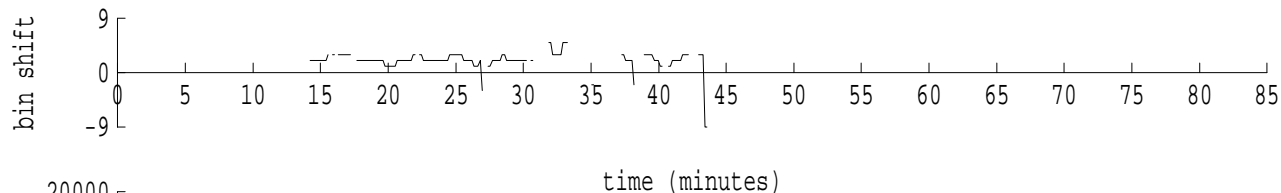
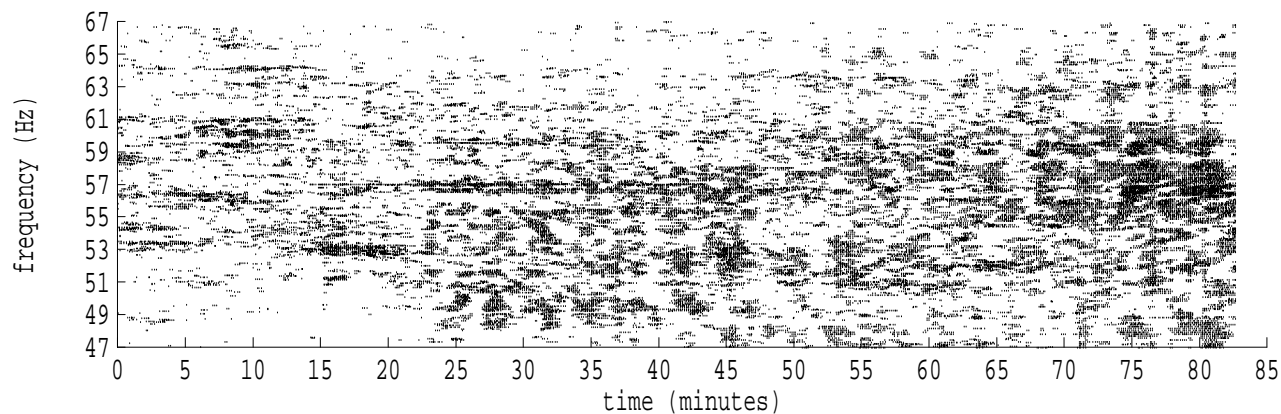
fft size: 16384  
overlap: 7/8  
sw\_hamm: 1  
sample rate: 228 Hz  
bin width: 0.0139 Hz  
int time: 71.86 sec  
bin freq: 57.028 Hz  
threshold: 2.50  
r\_max: 23286  
c rms: 9734  
n (rms): 221  
offset: 2  
pkr median: 376  
ave median: 325  
nor median: 315  
sdv median: 62  
n median: 344  
peak snr: 37.4 dB  
c snr: 29.8 dB  
sw\_line: 1  
sw\_theta: 1  
freq: 57.0308 Hz  
ship spd: 0.810 m/s  
1.576 knts

Heard Island - Ascension Island (PC1) File: a0311030.sam Ch. 2 Julian:031:10:30:13



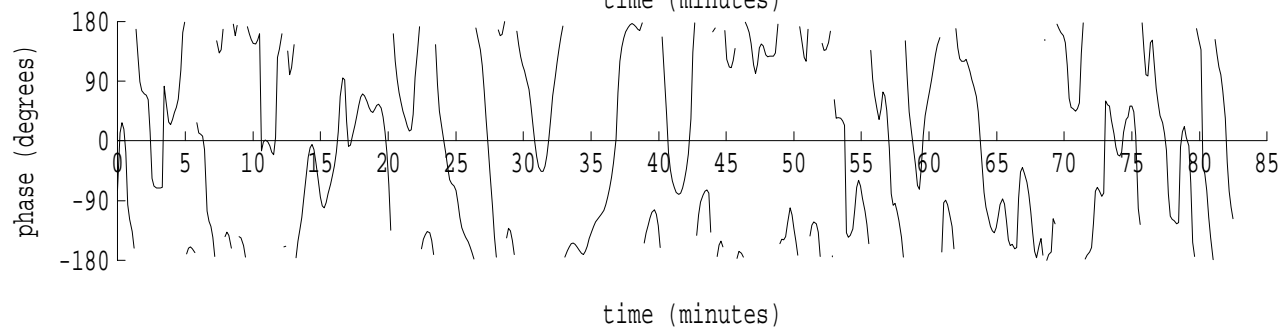
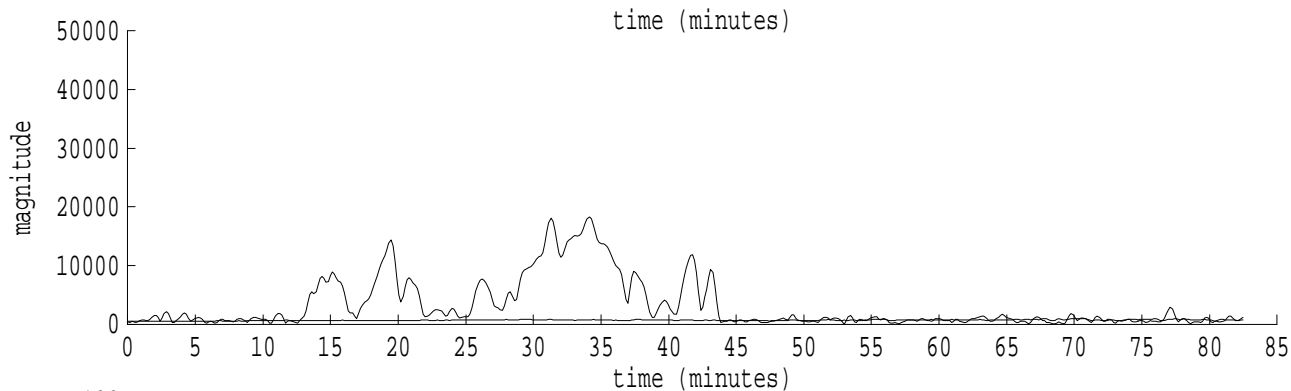
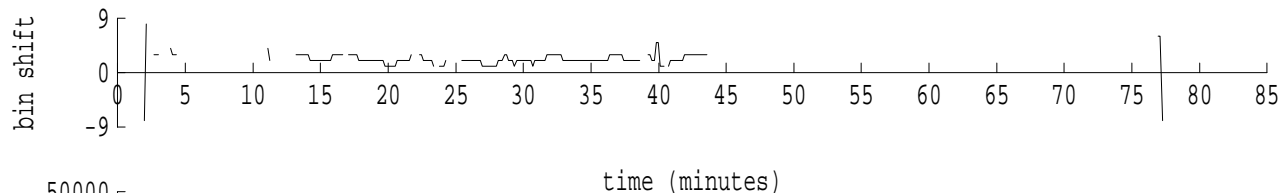
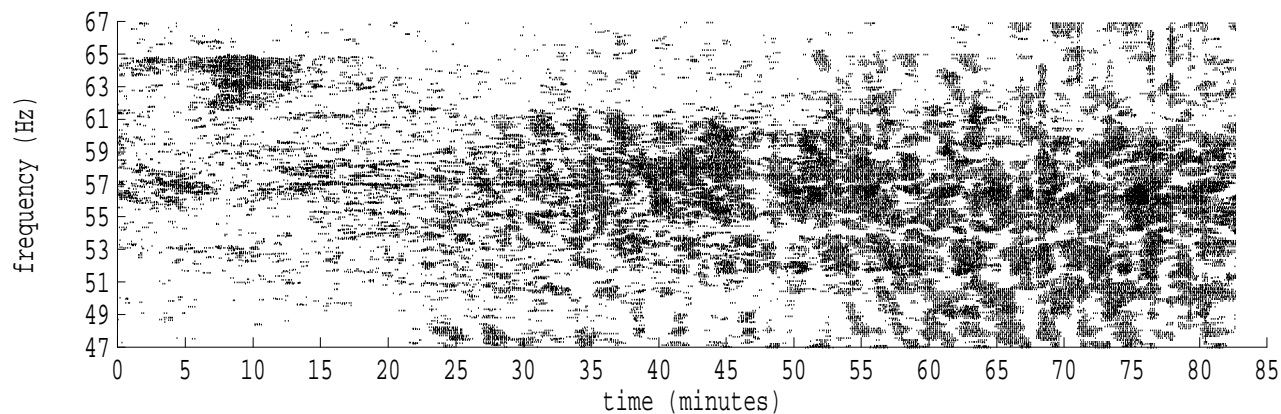
fft size: 16384  
overlap: 7/8  
sw\_hamm: 1  
sample rate: 228 Hz  
bin width: 0.0139 Hz  
int time: 71.86 sec  
bin freq: 57.028 Hz  
threshold: 2.50  
r\_max: 19458  
c rms: 7917  
n (rms): 200  
offset: 2  
pkr median: 634  
ave median: 721  
nor median: 700  
sdv median: 143  
n median: 375  
peak snr: 28.9 dB  
c snr: 21.1 dB  
sw\_line: 1  
sw\_theta: 1  
freq: 57.0305 Hz  
ship spd: 0.800 m/s  
1.556 knts

Heard Island - Ascension Island (PC1) File: a0311030.sam Ch. 3 Julian:031:10:30:13



fft size: 16384  
overlap: 7/8  
sw\_hamm: 1  
sample rate: 228 Hz  
bin width: 0.0139 Hz  
int time: 71.86 sec  
bin freq: 57.028 Hz  
threshold: 2.50  
r\_max: 11466  
c rms: 5758  
n (rms): 149  
offset: 2  
pkr median: 901  
ave median: 1029  
nor median: 1004  
sdv median: 110  
n median: 426  
peak snr: 21.1 dB  
c snr: 15.2 dB  
sw\_line: 1  
sw\_theta: 1  
freq: 57.0298 Hz  
ship spd: 0.784 m/s  
1.524 knts

Heard Island - Ascension Island (PC1) File: a0311030.sam Ch. 4 Julian:031:10:30:13



fft size: 16384  
overlap: 7/8  
sw\_hamm: 1  
sample rate: 228 Hz  
bin width: 0.0139 Hz  
int time: 71.86 sec  
bin freq: 57.028 Hz  
threshold: 2.50  
r\_max: 20161  
c rms: 8671  
n (rms): 200  
offset: 2  
pkr median: 719  
ave median: 696  
nor median: 695  
sdv median: 106  
n median: 366  
peak snr: 29.2 dB  
c snr: 21.9 dB  
sw\_line: 1  
sw\_theta: 1  
freq: 57.0298 Hz  
ship spd: 0.783 m/s  
1.522 knts