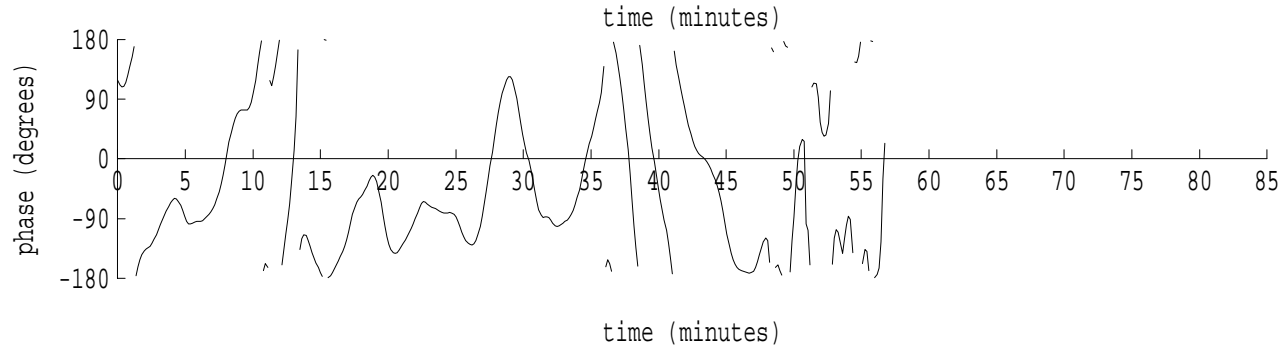
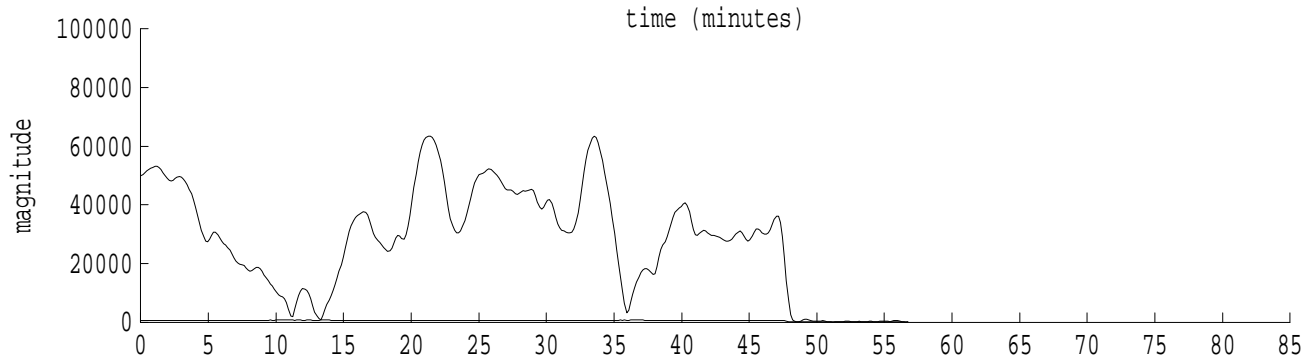
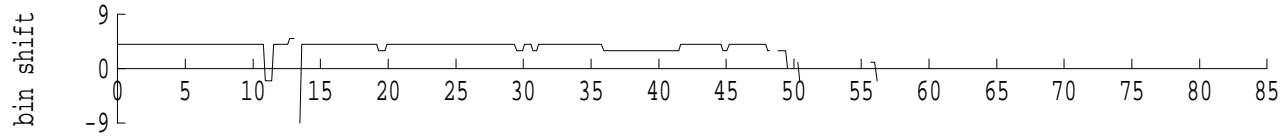
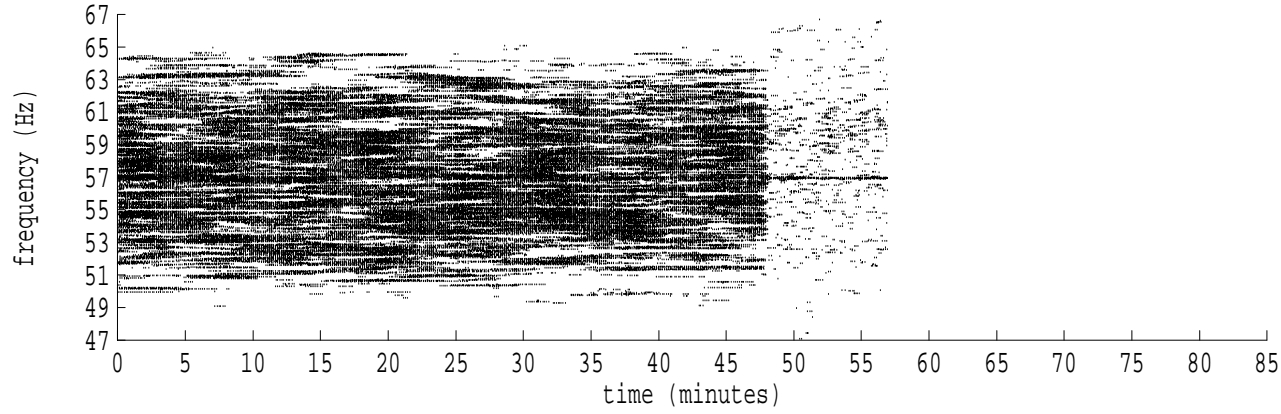
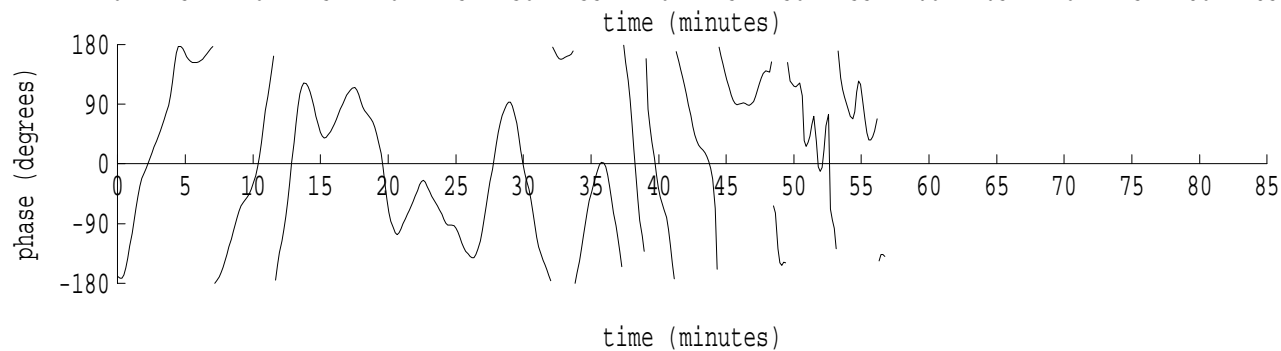
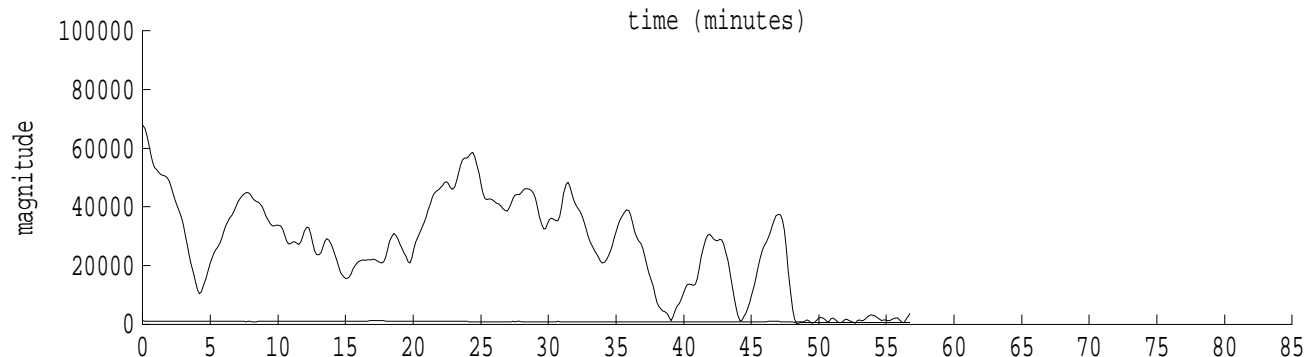
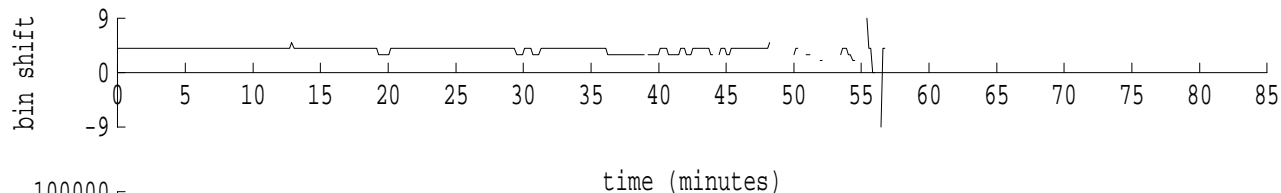
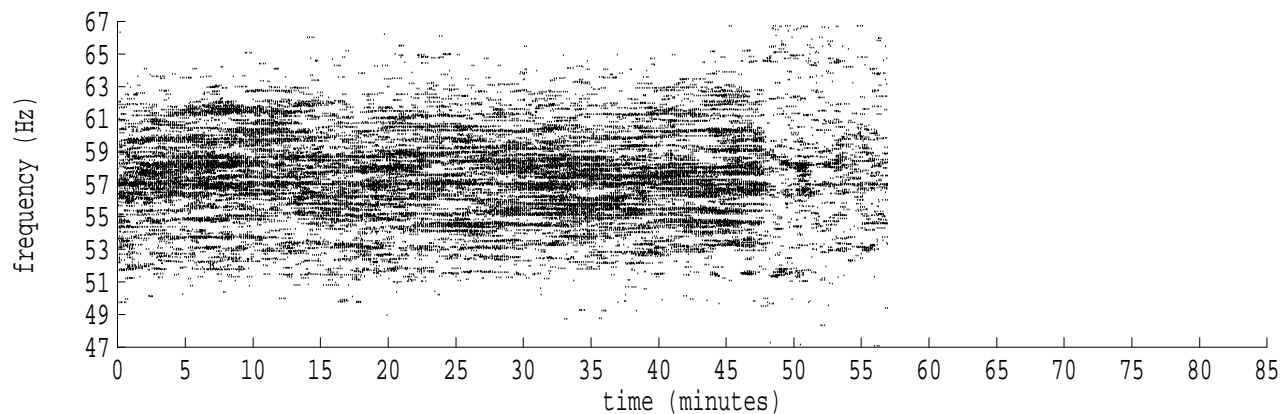


Heard Island - Ascension Island (PCI) File: a0300755.sam Ch. 1 Julian:030:07:55:57



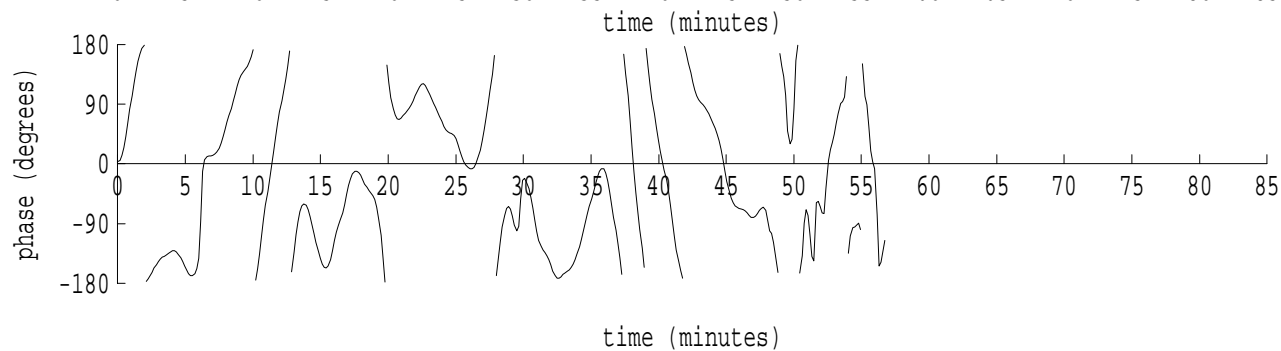
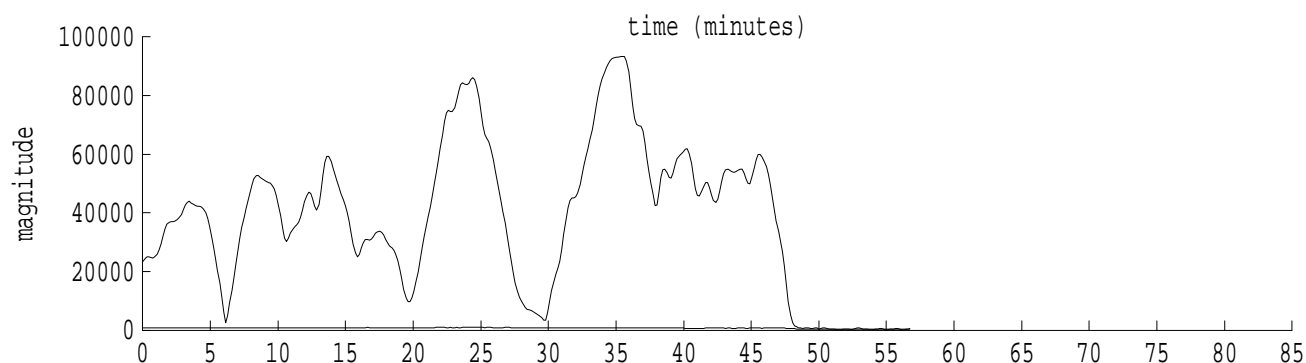
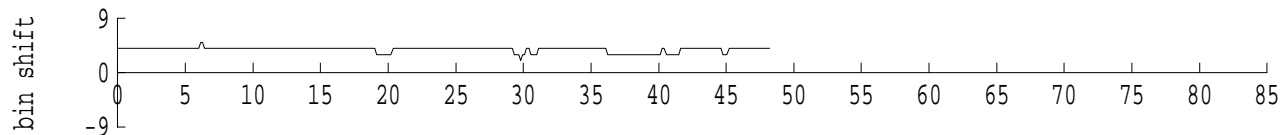
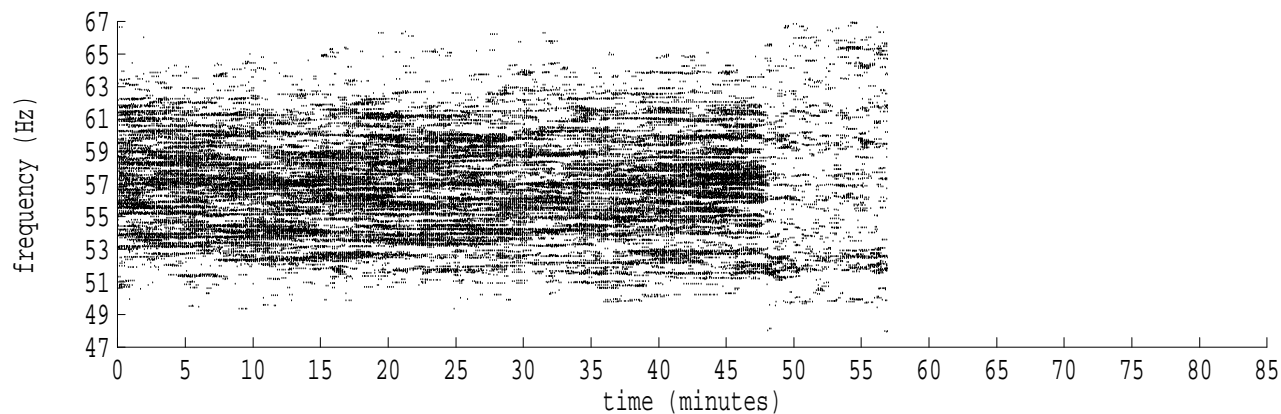
fft size: 16384  
overlap: 7/8  
sw\_hamm: 1  
sample rate: 228 Hz  
bin width: 0.0139 Hz  
int time: 71.86 sec  
bin freq: 57.056 Hz  
threshold: 2.50  
r\_max: 63483  
c rms: 35195  
n (rms): 333  
offset: 4  
pkr median: 629  
ave median: 566  
nor median: 229  
sdv median: 153  
n median: 55  
peak snr: 48.8 dB  
c snr: 43.7 dB  
sw\_line: 1  
sw\_theta: 1  
freq: 57.0534 Hz  
ship spd: 1.403 m/s  
2.729 knts

Heard Island - Ascension Island (PC1) File: a0300755.sam Ch. 2 Julian:030:07:55:57



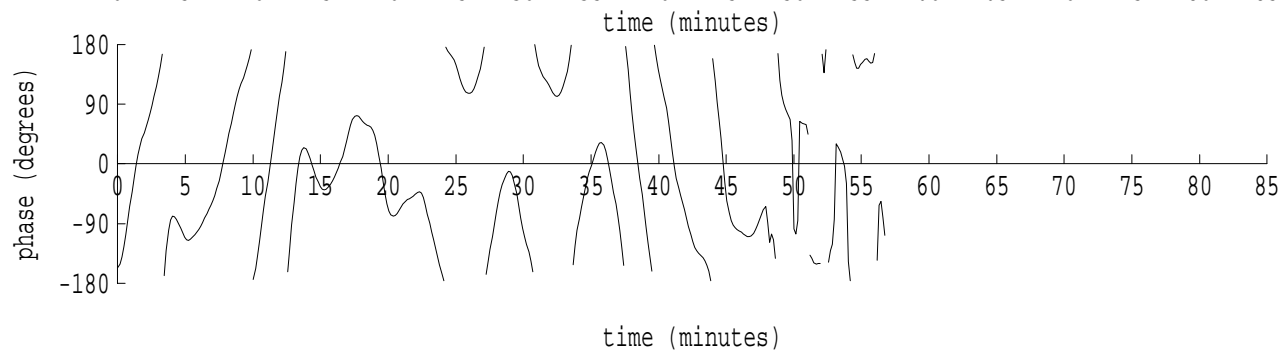
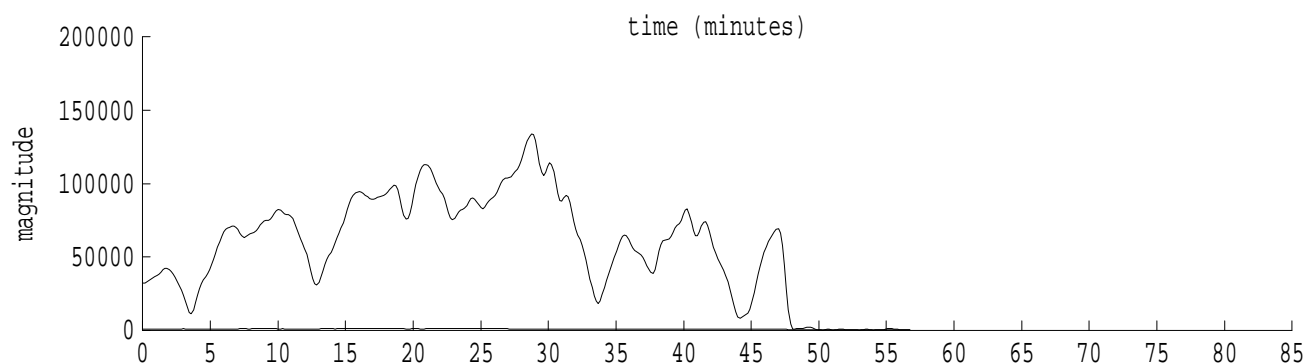
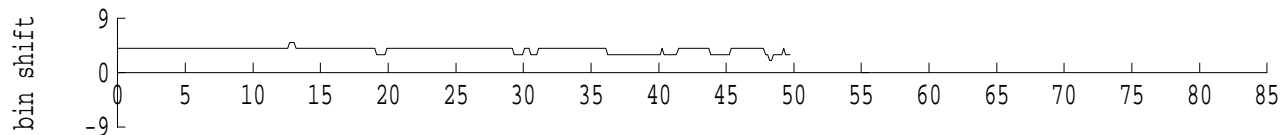
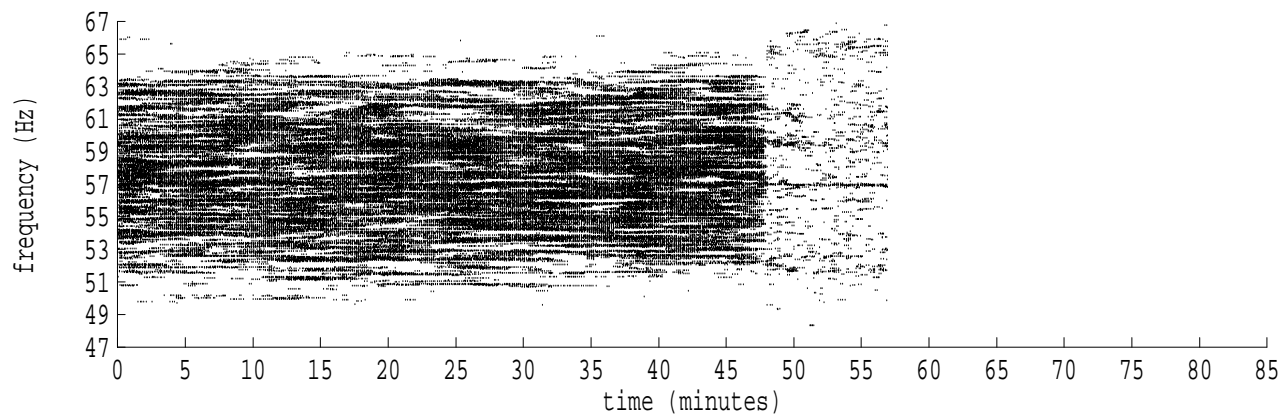
fft size: 16384  
overlap: 7/8  
sw\_hamm: 1  
sample rate: 228 Hz  
bin width: 0.0139 Hz  
int time: 71.86 sec  
bin freq: 57.056 Hz  
threshold: 2.50  
r\_max: 68114  
c rms: 32590  
n (rms): 346  
offset: 4  
pkr median: 1189  
ave median: 898  
nor median: 636  
sdv median: 68  
n median: 45  
peak snr: 40.6 dB  
c snr: 34.2 dB  
sw\_line: 1  
sw\_theta: 1  
freq: 57.0534 Hz  
ship spd: 1.404 m/s  
2.730 knts

Heard Island - Ascension Island (PC1) File: a0300755.sam Ch. 3 Julian:030:07:55:57



fft size: 16384  
overlap: 7/8  
sw\_hamm: 1  
sample rate: 228 Hz  
bin width: 0.0139 Hz  
int time: 71.86 sec  
bin freq: 57.056 Hz  
threshold: 2.50  
r\_max: 98258  
c rms: 49280  
n (rms): 323  
offset: 4  
pkr median: 797  
ave median: 768  
nor median: 432  
sdv median: 22  
n median: 57  
peak snr: 47.1 dB  
c snr: 41.1 dB  
sw\_line: 1  
sw\_theta: 1  
freq: 57.0533 Hz  
ship spd: 1.401 m/s  
2.725 knts

Heard Island - Ascension Island (PC1) File: a0300755.sam Ch. 4 Julian:030:07:55:57



fft size: 16384  
overlap: 7/8  
sw\_hamm: 1  
sample rate: 228 Hz  
bin width: 0.0139 Hz  
int time: 71.86 sec  
bin freq: 57.056 Hz  
threshold: 2.50  
r\_max: 133953  
c rms: 70735  
n (rms): 337  
offset: 4  
pkr median: 875  
ave median: 837  
nor median: 306  
sdv median: 14  
n median: 48  
peak snr: 52.8 dB  
c snr: 47.3 dB  
sw\_line: 1  
sw\_theta: 1  
freq: 57.0532 Hz  
ship spd: 1.397 m/s  
2.717 knts