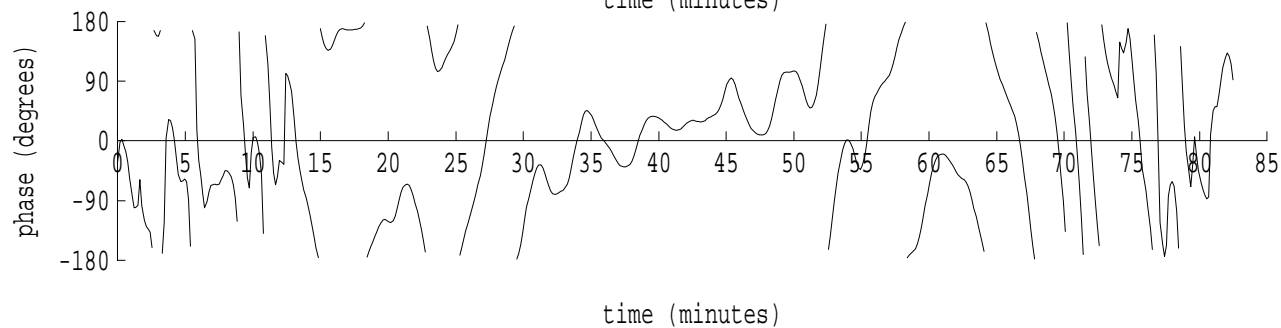
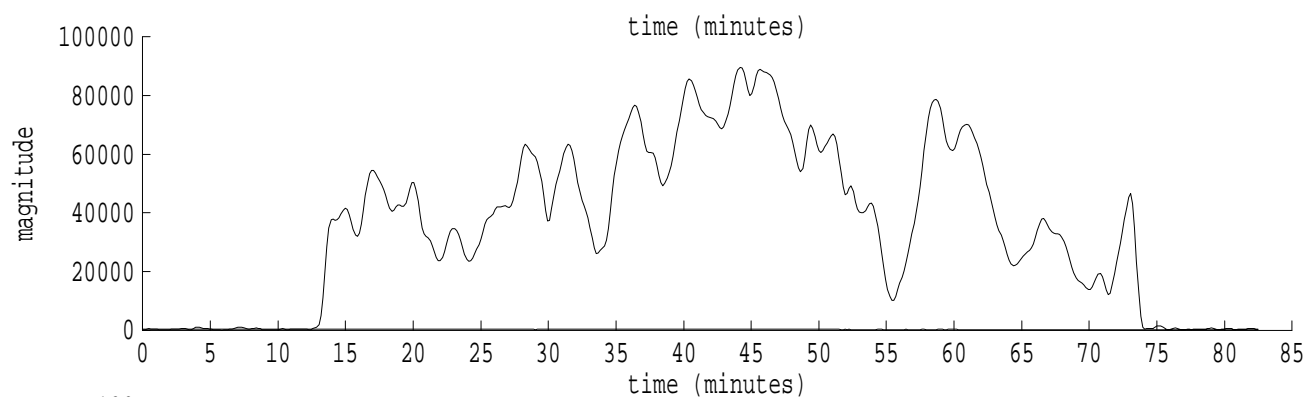
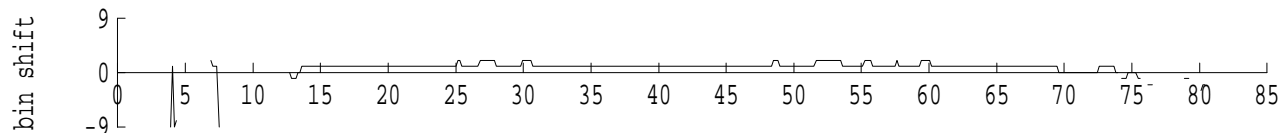
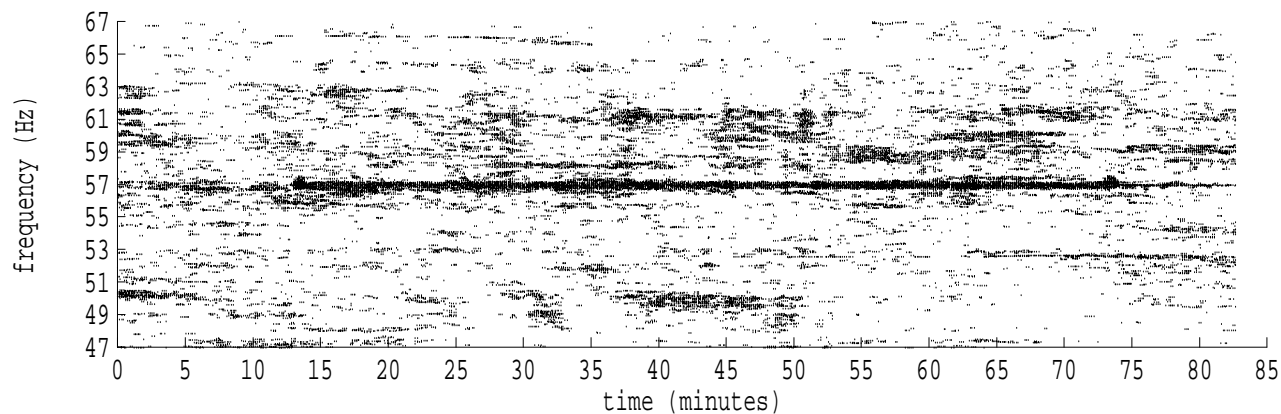
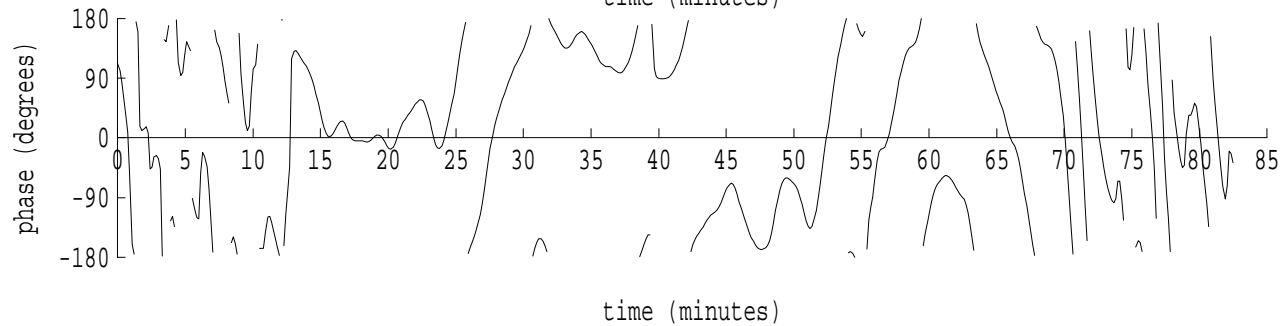
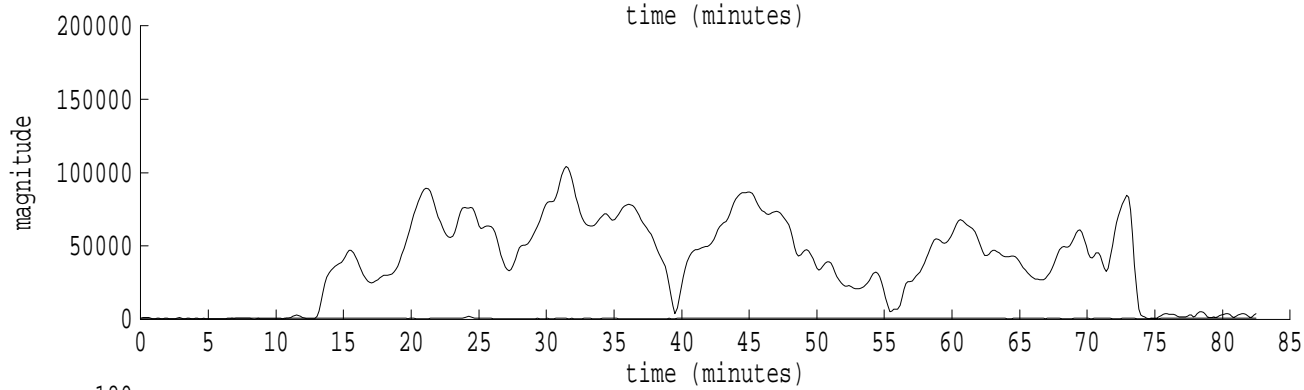
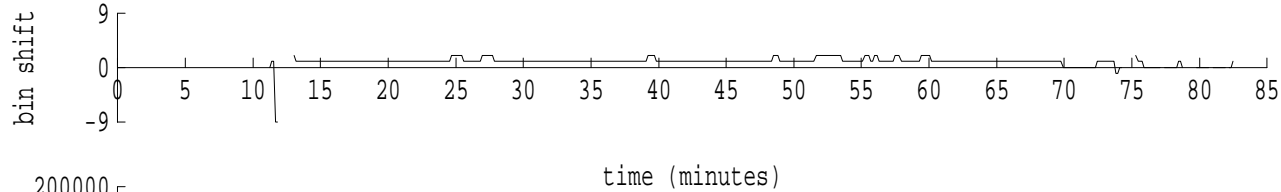
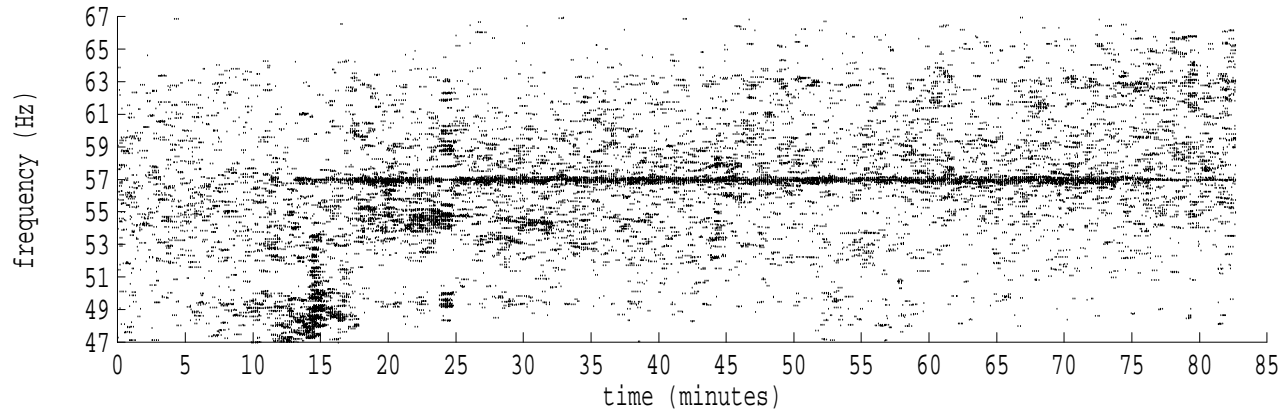


Heard Island - Ascension Island (PC1) File: a0300130.sam Ch. 1 Julian:030:01:30:13



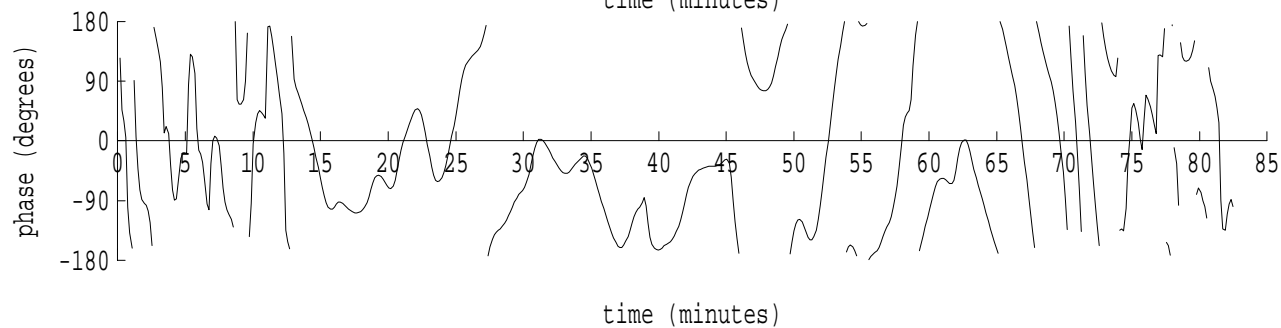
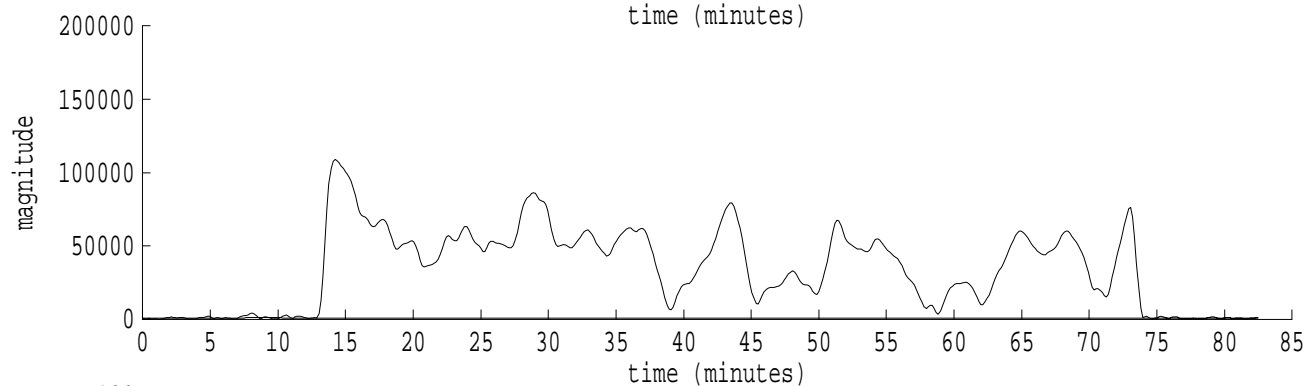
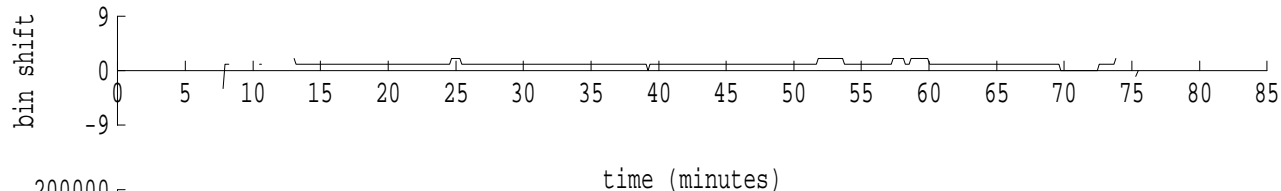
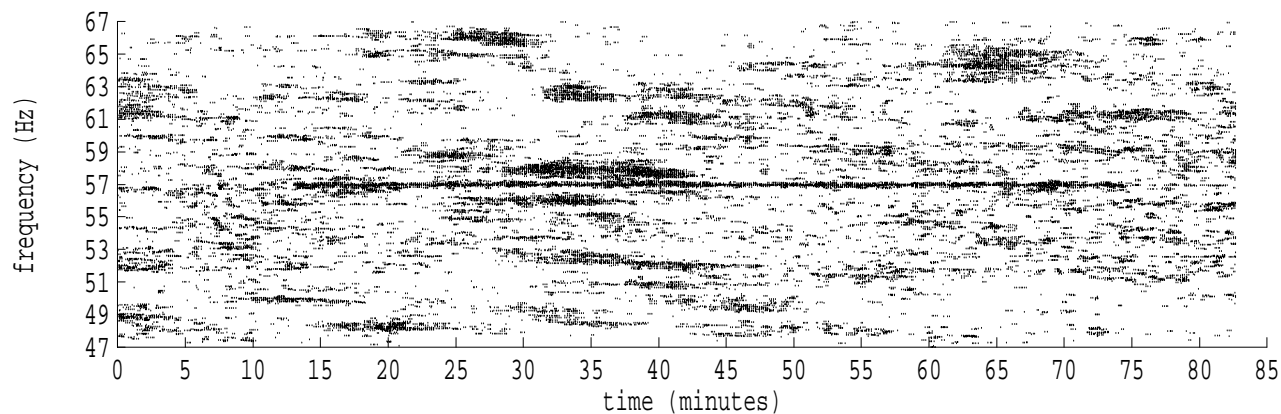
fft size: 16384  
overlap: 7/8  
sw\_hamm: 1  
sample rate: 228 Hz  
bin width: 0.0139 Hz  
int time: 71.86 sec  
bin freq: 57.014 Hz  
threshold: 2.50  
r\_max: 89720  
c rms: 49999  
n (rms): 439  
offset: 1  
pkr median: 319  
ave median: 283  
nor median: 278  
sdv median: 37  
n median: 126  
peak snr: 50.2 dB  
c snr: 45.1 dB  
sw\_line: 1  
sw\_theta: 1  
freq: 57.0166 Hz  
ship spd: 0.435 m/s  
0.847 knts

Heard Island - Ascension Island (PC1) File: a0300130.sam Ch. 2 Julian:030:01:30:13



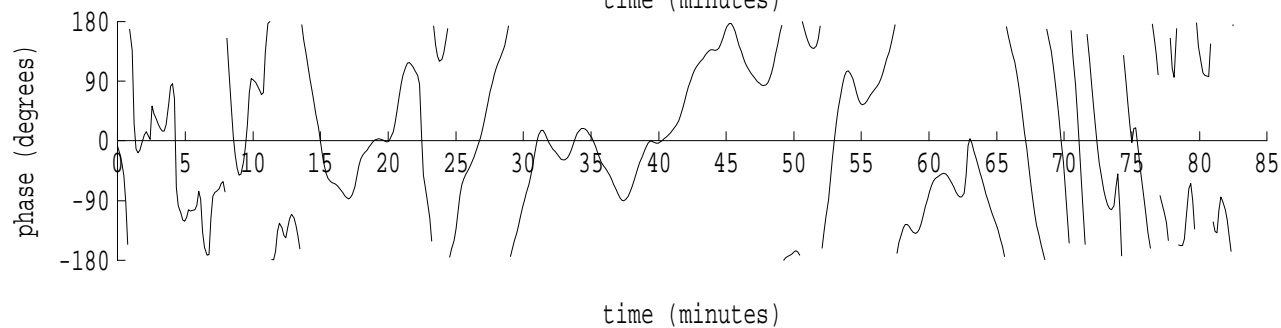
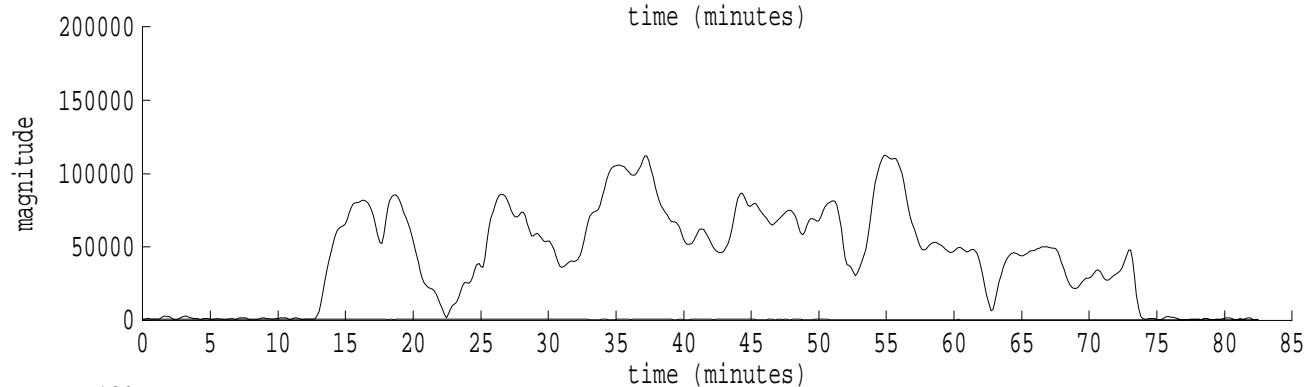
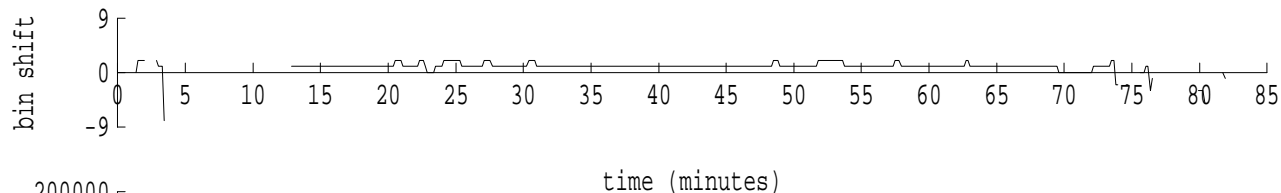
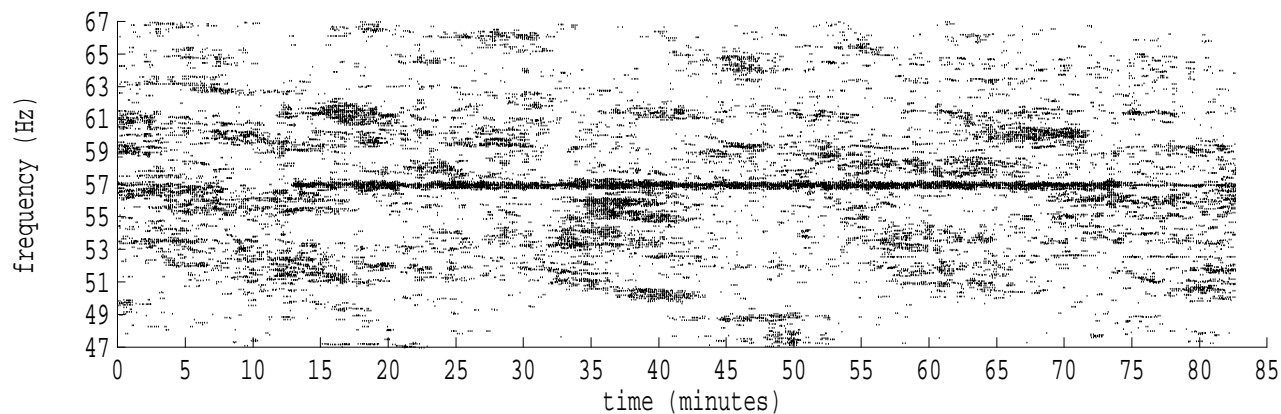
fft size: 16384  
overlap: 7/8  
sw\_hamm: 1  
sample rate: 228 Hz  
bin width: 0.0139 Hz  
int time: 71.86 sec  
bin freq: 57.014 Hz  
threshold: 2.50  
r\_max: 104010  
c rms: 52265  
n (rms): 455  
offset: 1  
pkr median: 549  
ave median: 610  
nor median: 566  
sdv median: 70  
n median: 103  
peak snr: 45.3 dB  
c snr: 39.3 dB  
sw\_line: 1  
sw\_theta: 1  
freq: 57.0161 Hz  
ship spd: 0.422 m/s  
0.821 knts

Heard Island - Ascension Island (PC1) File: a0300130.sam Ch. 3 Julian:030:01:30:13



fft size: 16384  
overlap: 7/8  
sw\_hamm: 1  
sample rate: 228 Hz  
bin width: 0.0139 Hz  
int time: 71.86 sec  
bin freq: 57.014 Hz  
threshold: 2.50  
r\_max: 108807  
c rms: 49850  
n (rms): 418  
offset: 1  
pkr median: 782  
ave median: 827  
nor median: 848  
sdv median: 126  
n median: 141  
peak snr: 42.2 dB  
c snr: 35.4 dB  
sw\_line: 1  
sw\_theta: 1  
freq: 57.0162 Hz  
ship spd: 0.426 m/s  
0.828 knts

Heard Island - Ascension Island (PC1) File: a0300130.sam Ch. 4 Julian:030:01:30:13



fft size: 16384  
overlap: 7/8  
sw\_hamm: 1  
sample rate: 228 Hz  
bin width: 0.0139 Hz  
int time: 71.86 sec  
bin freq: 57.014 Hz  
threshold: 2.50  
r\_max: 112486  
c rms: 60606  
n (rms): 435  
offset: 1  
pkr median: 522  
ave median: 569  
nor median: 640  
sdv median: 141  
n median: 126  
peak snr: 44.9 dB  
c snr: 39.5 dB  
sw\_line: 1  
sw\_theta: 1  
freq: 57.0165 Hz  
ship spd: 0.433 m/s  
0.843 knts