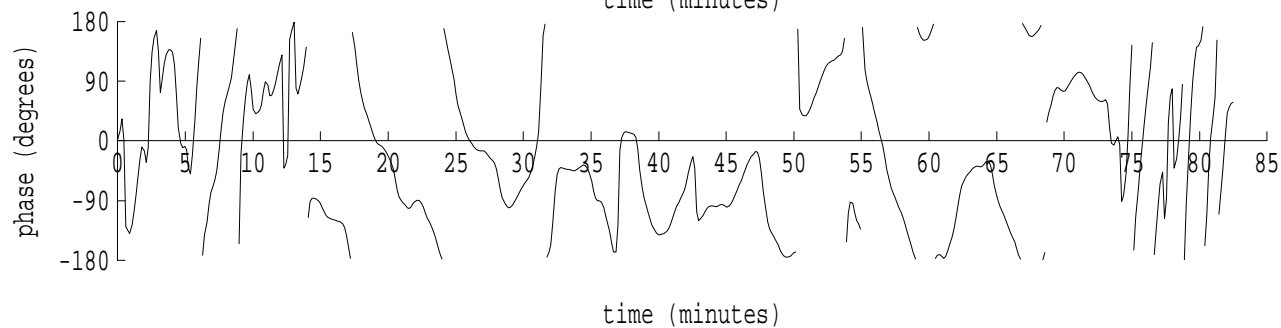
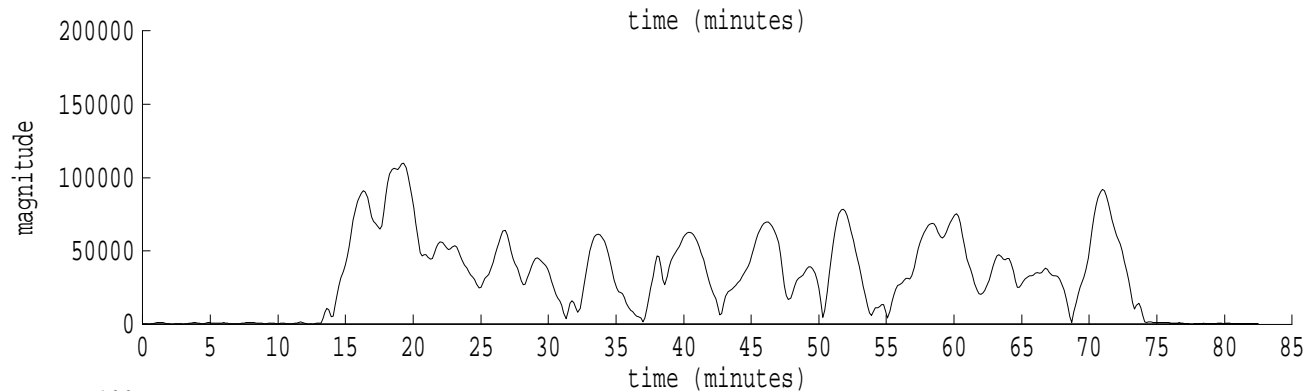
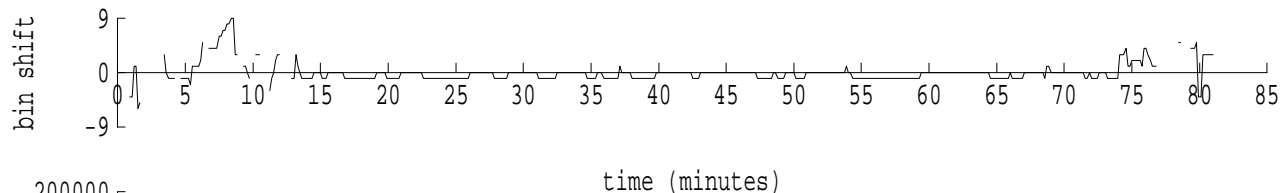
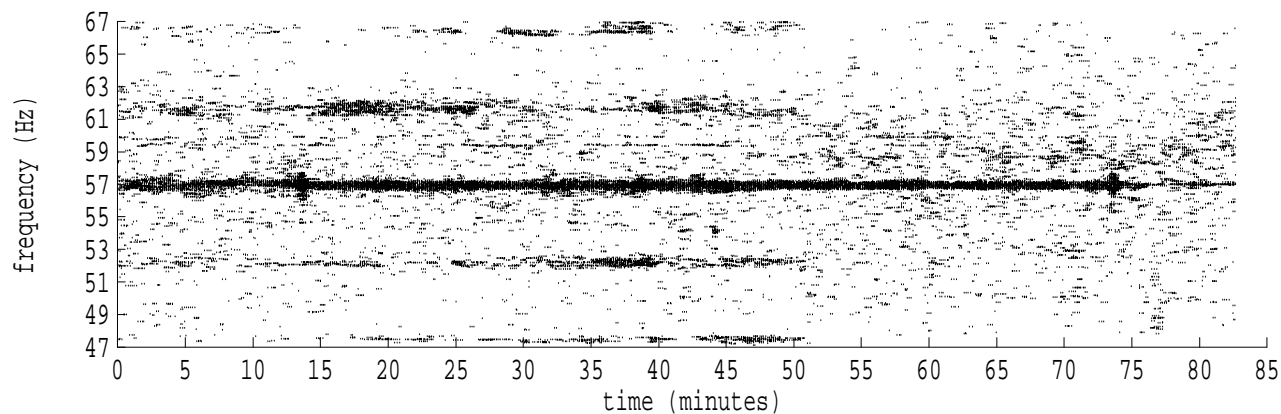
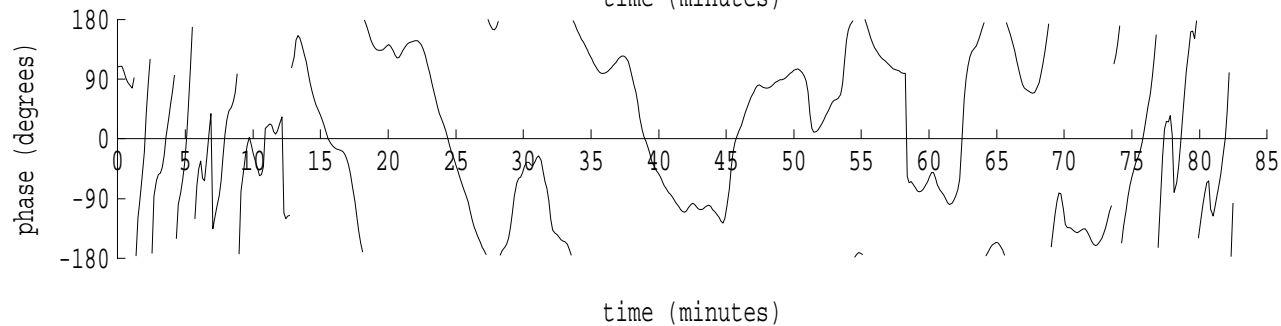
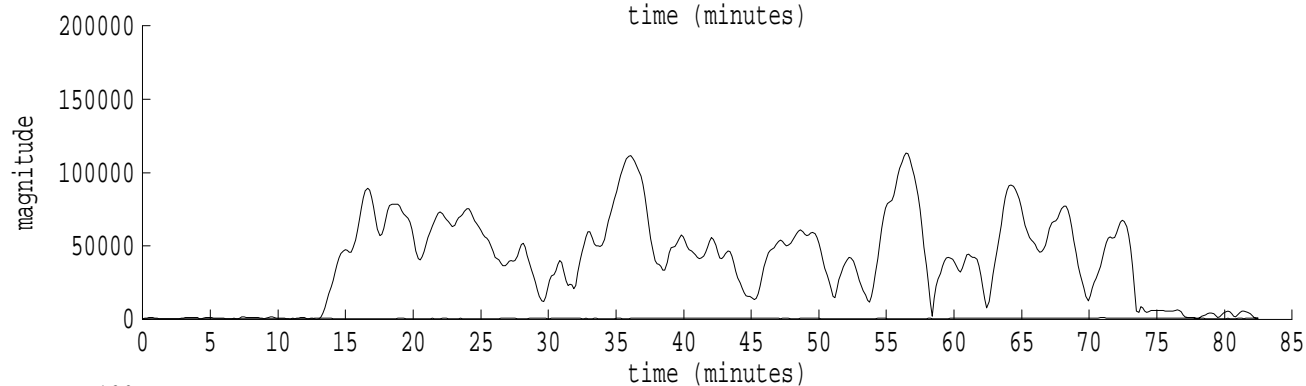
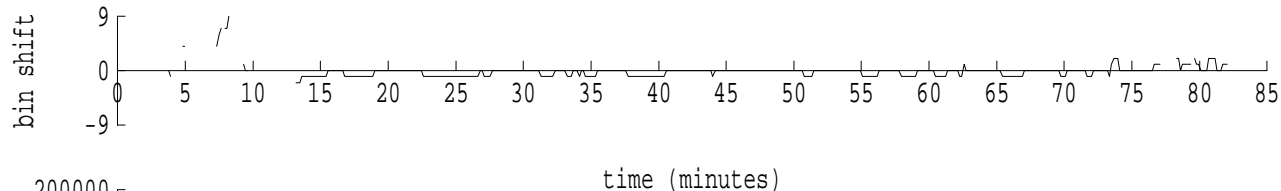
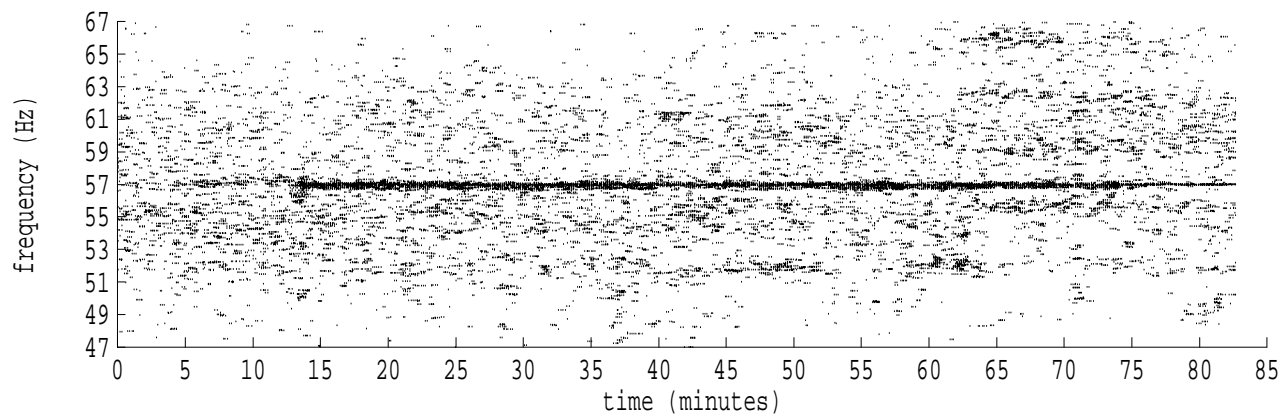


Heard Island - Ascension Island (PC1) File: a0291330.sam Ch. 1 Julian:029:13:30:13



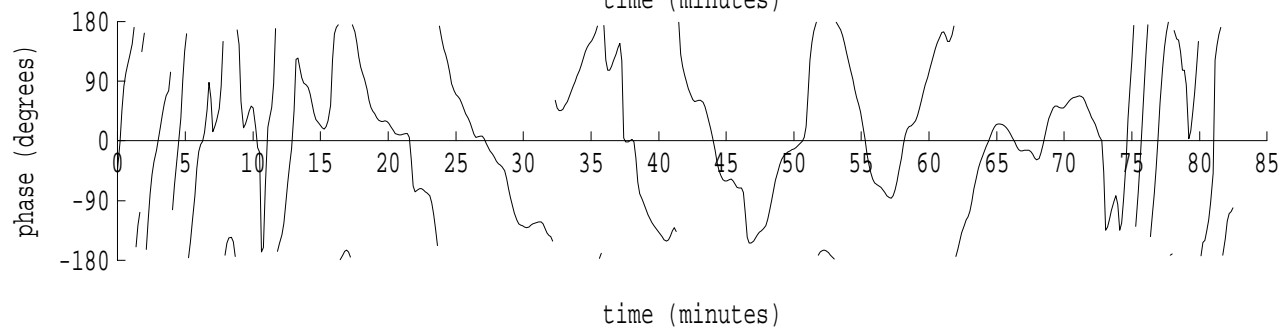
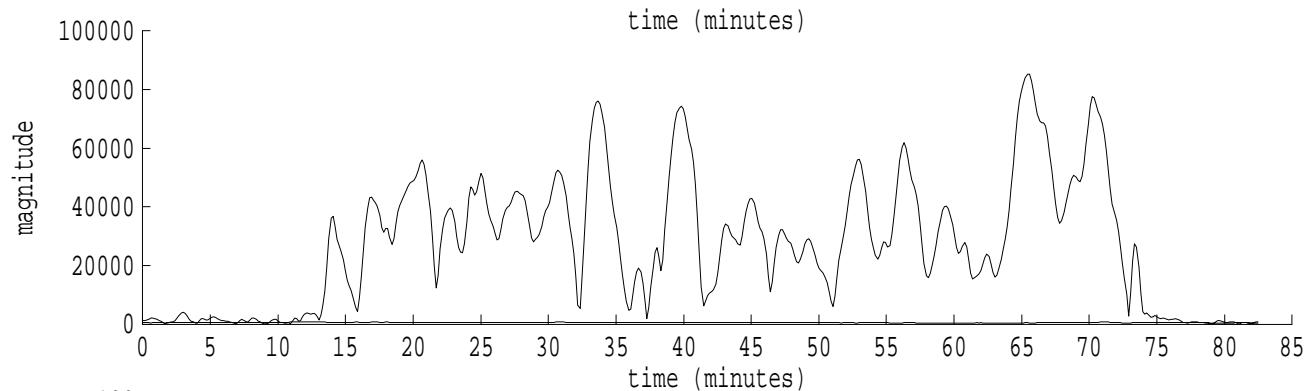
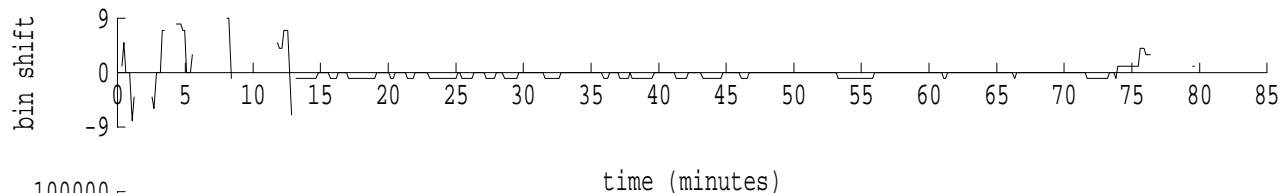
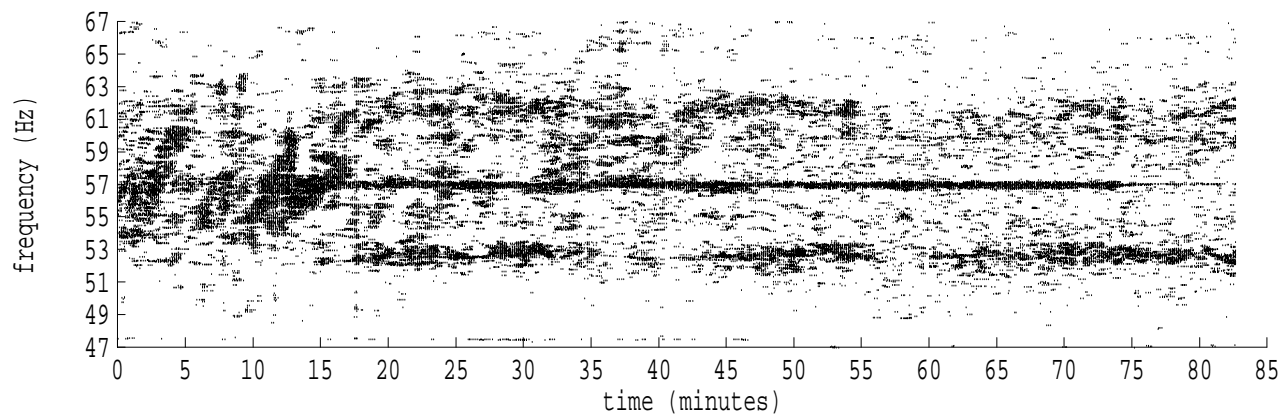
fft size: 16384  
overlap: 7/8  
sw\_hamm: 1  
sample rate: 228 Hz  
bin width: 0.0139 Hz  
int time: 71.86 sec  
bin freq: 57.000 Hz  
threshold: 2.50  
r\_max: 130972  
c rms: 43909  
n (rms): 494  
offset: 0  
pkr median: 197  
ave median: 196  
nor median: 195  
sdv median: 29  
n median: 71  
peak snr: 56.5 dB  
c snr: 47.0 dB  
sw\_line: 1  
sw\_theta: 1  
freq: 56.9949 Hz  
ship spd: -0.135 m/s  
-0.262 knts

Heard Island - Ascension Island (PC1) File: a0291330.sam Ch. 2 Julian:029:13:30:13



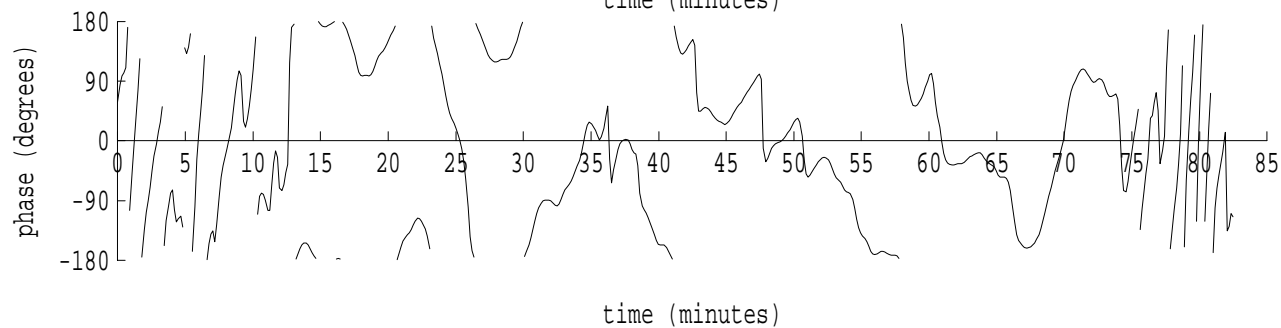
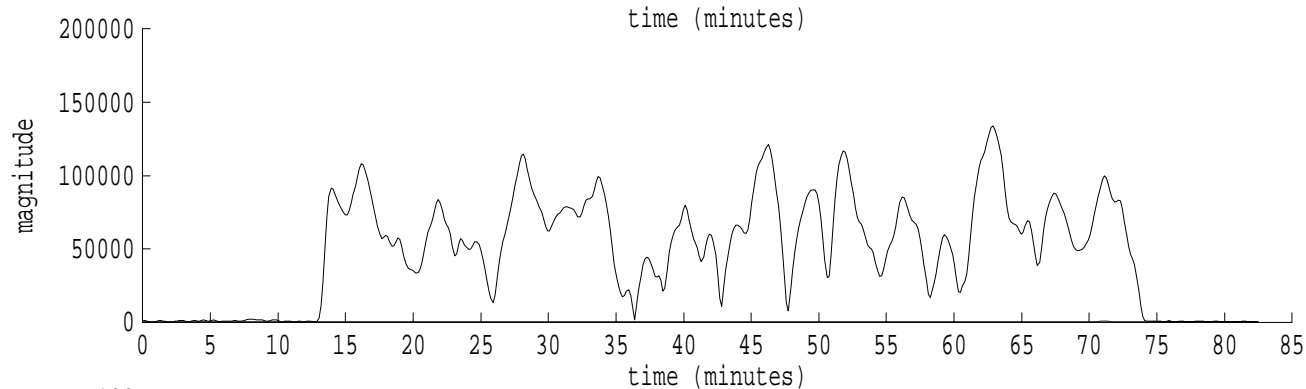
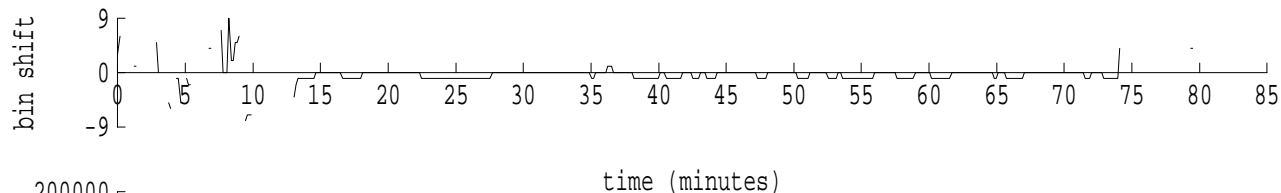
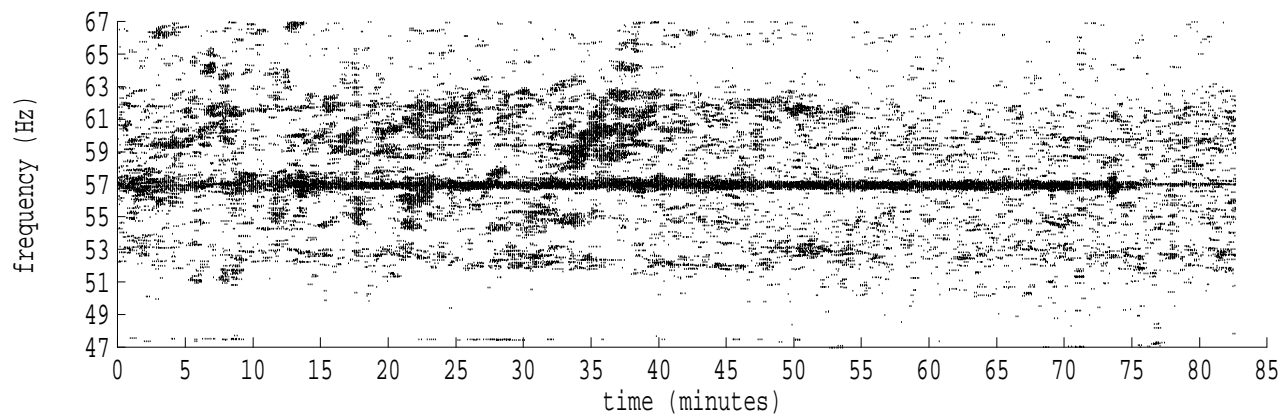
fft size: 16384  
overlap: 7/8  
sw\_hamm: 1  
sample rate: 228 Hz  
bin width: 0.0139 Hz  
int time: 71.86 sec  
bin freq: 57.000 Hz  
threshold: 2.50  
r\_max: 113305  
c rms: 52327  
n (rms): 466  
offset: 0  
pkr median: 470  
ave median: 567  
nor median: 509  
sdv median: 42  
n median: 99  
peak snr: 47.0 dB  
c snr: 40.2 dB  
sw\_line: 1  
sw\_theta: 1  
freq: 56.9948 Hz  
ship spd: -0.137 m/s  
-0.266 knts

Heard Island - Ascension Island (PC1) File: a0291330.sam Ch. 3 Julian:029:13:30:13



fft size: 16384  
overlap: 7/8  
sw\_hamm: 1  
sample rate: 228 Hz  
bin width: 0.0139 Hz  
int time: 71.86 sec  
bin freq: 57.000 Hz  
threshold: 2.50  
r\_max: 85373  
c rms: 37957  
n (rms): 460  
offset: 0  
pkr median: 512  
ave median: 585  
nor median: 576  
sdv median: 90  
n median: 107  
peak snr: 43.4 dB  
c snr: 36.4 dB  
sw\_line: 1  
sw\_theta: 1  
freq: 56.9949 Hz  
ship spd: -0.133 m/s  
-0.259 knts

Heard Island - Ascension Island (PC1) File: a0291330.sam Ch. 4 Julian:029:13:30:13



fft size: 16384  
overlap: 7/8  
sw\_hamm: 1  
sample rate: 228 Hz  
bin width: 0.0139 Hz  
int time: 71.86 sec  
bin freq: 57.000 Hz  
threshold: 2.50  
r\_max: 133777  
c rms: 66628  
n (rms): 445  
offset: 0  
pkr median: 287  
ave median: 392  
nor median: 397  
sdv median: 62  
n median: 117  
peak snr: 50.5 dB  
c snr: 44.5 dB  
sw\_line: 1  
sw\_theta: 1  
freq: 56.9942 Hz  
ship spd: -0.154 m/s  
-0.299 knts