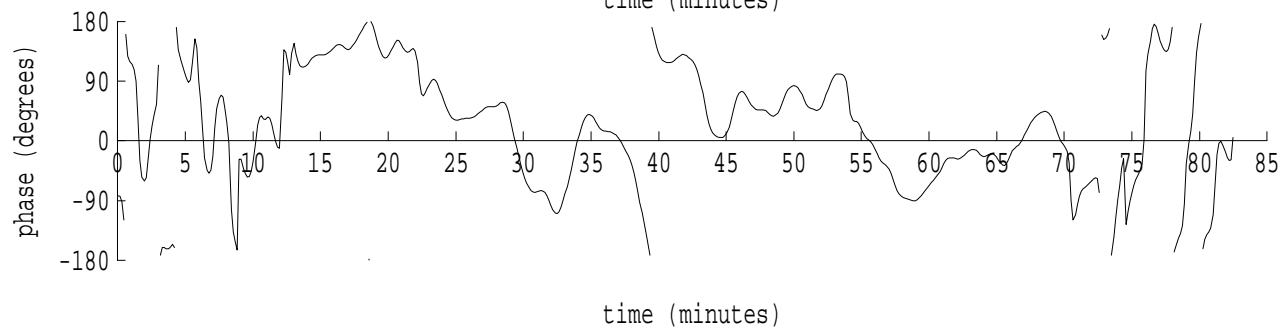
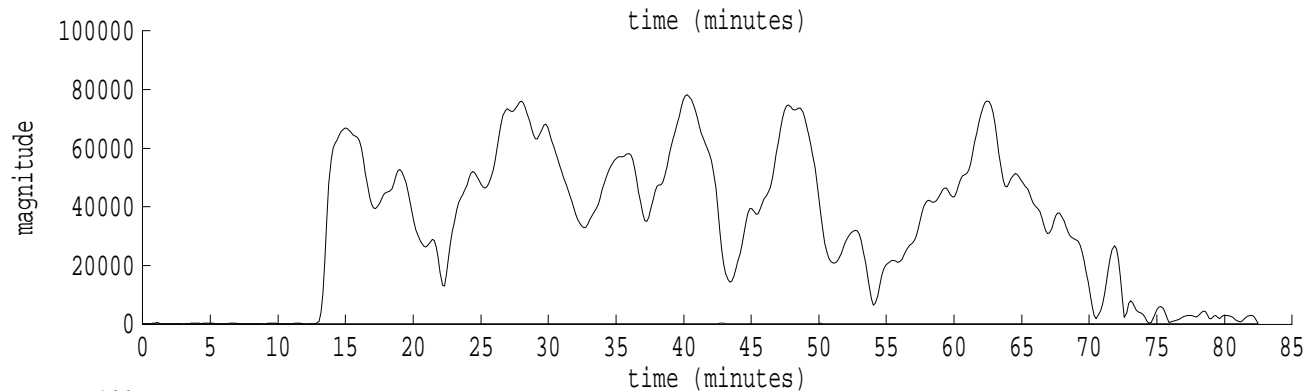
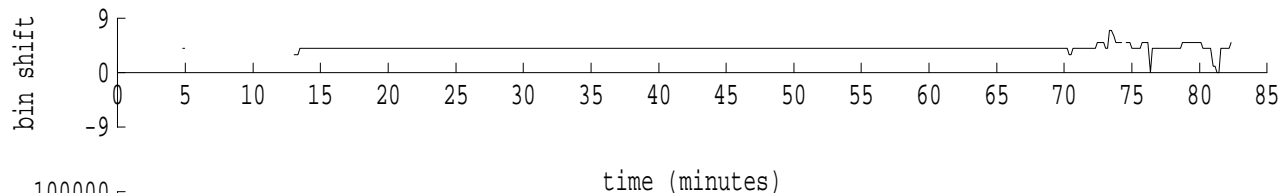
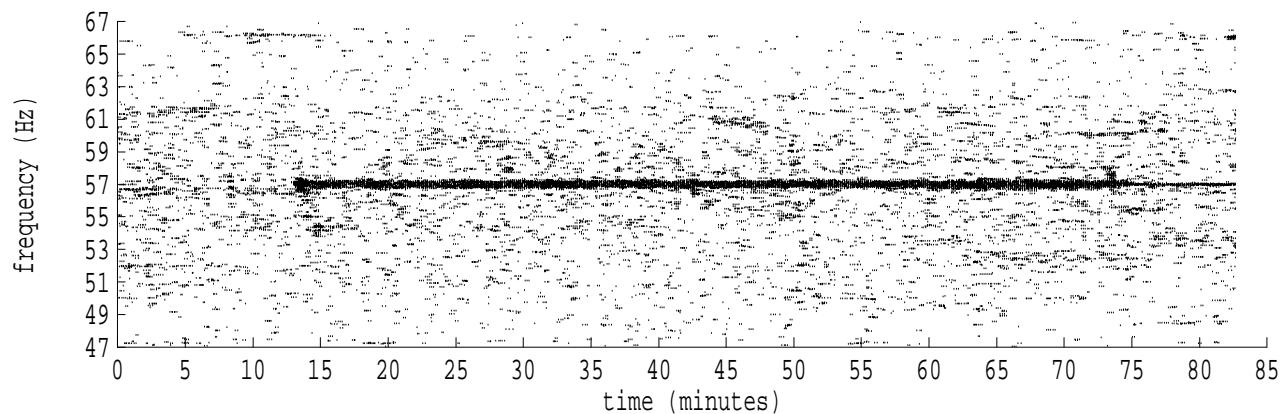
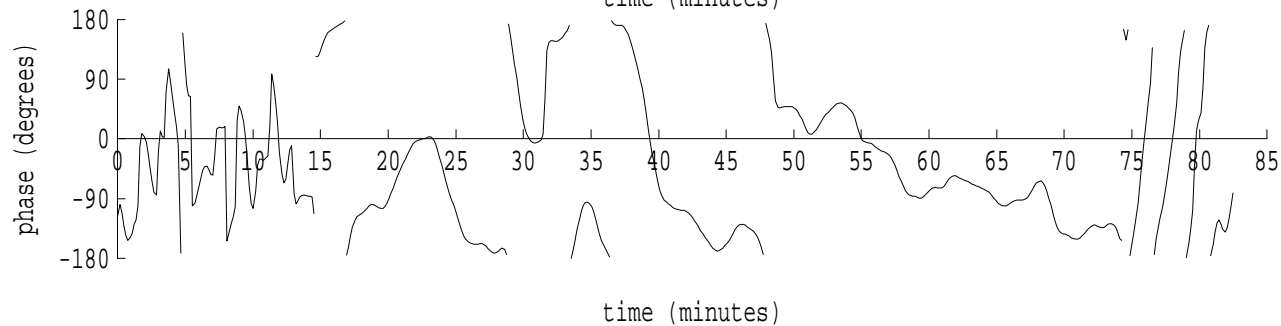
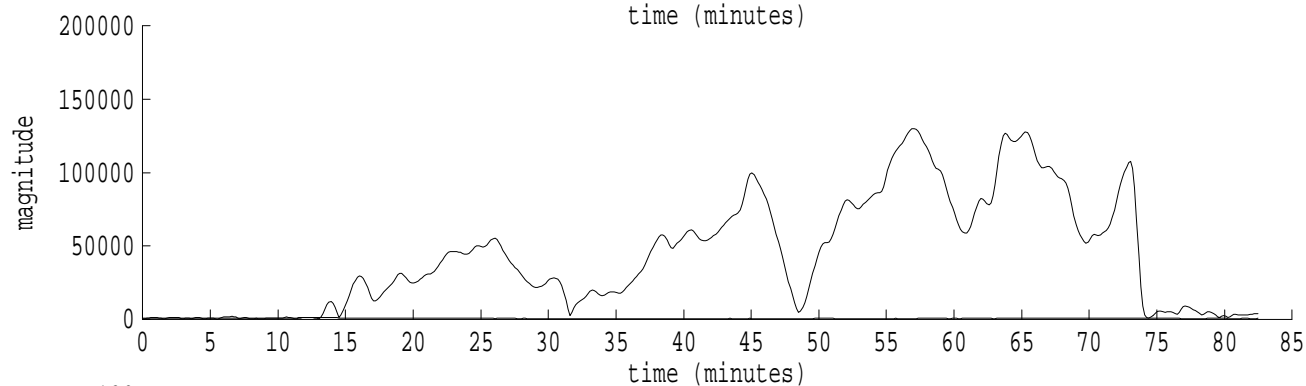
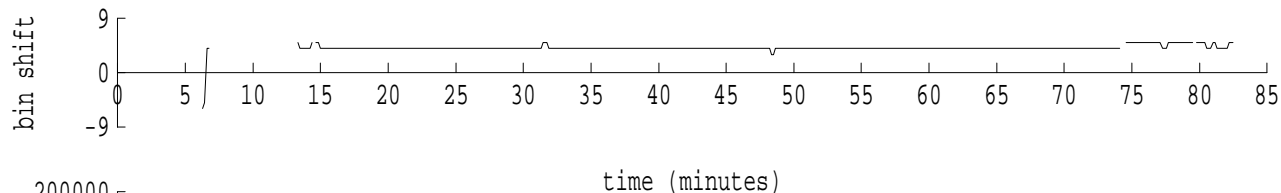
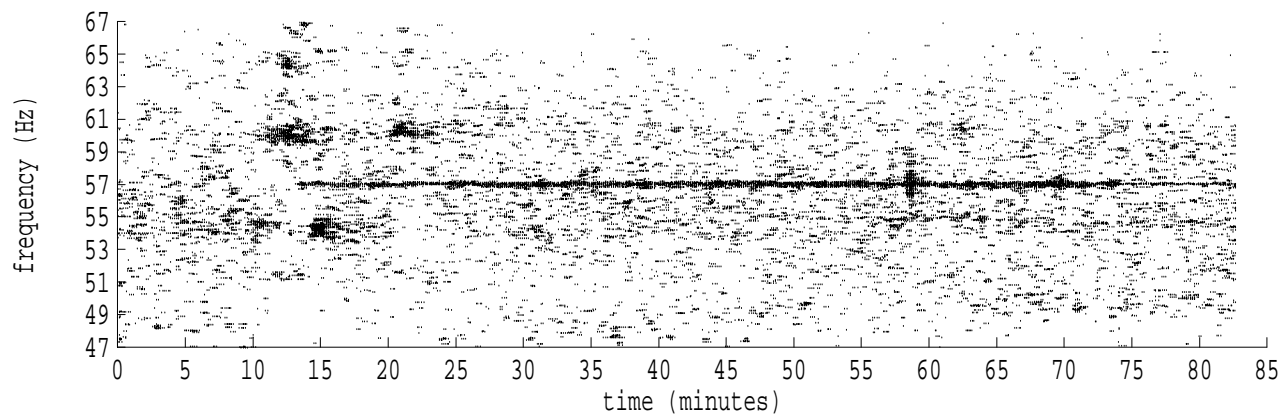


Heard Island - Ascension Island (PC1) File: a0271330.sam Ch. 1 Julian:027:13:30:13



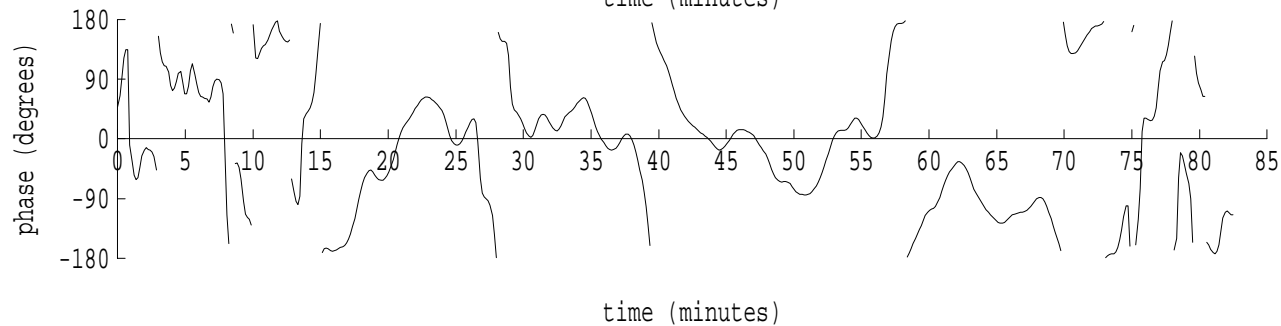
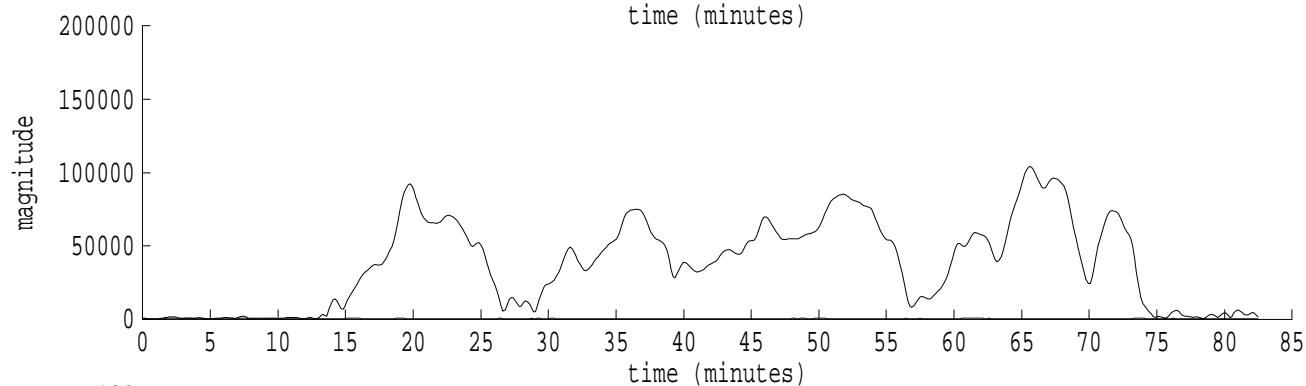
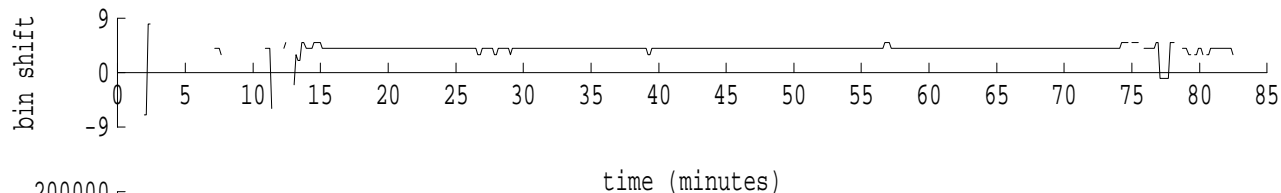
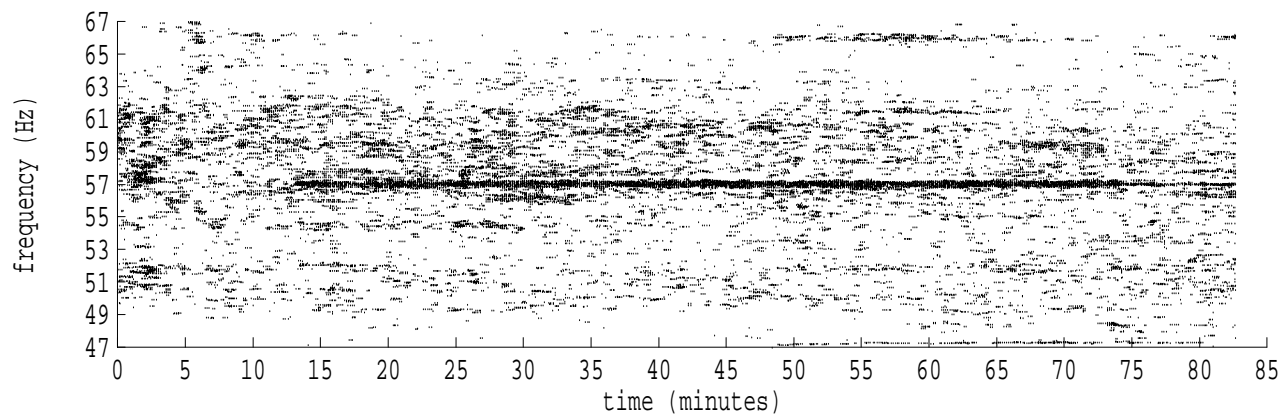
fft size: 16384  
overlap: 7/8  
sw\_hamm: 1  
sample rate: 228 Hz  
bin width: 0.0139 Hz  
int time: 71.86 sec  
bin freq: 57.056 Hz  
threshold: 2.50  
r\_max: 78194  
c rms: 44145  
n (rms): 466  
offset: 4  
pkr median: 216  
ave median: 212  
nor median: 203  
sdv median: 14  
n median: 89  
peak snr: 51.7 dB  
c snr: 46.7 dB  
sw\_line: 1  
sw\_theta: 1  
freq: 57.0558 Hz  
ship spd: 1.465 m/s  
2.849 knts

Heard Island - Ascension Island (PC1) File: a0271330.sam Ch. 2 Julian:027:13:30:13



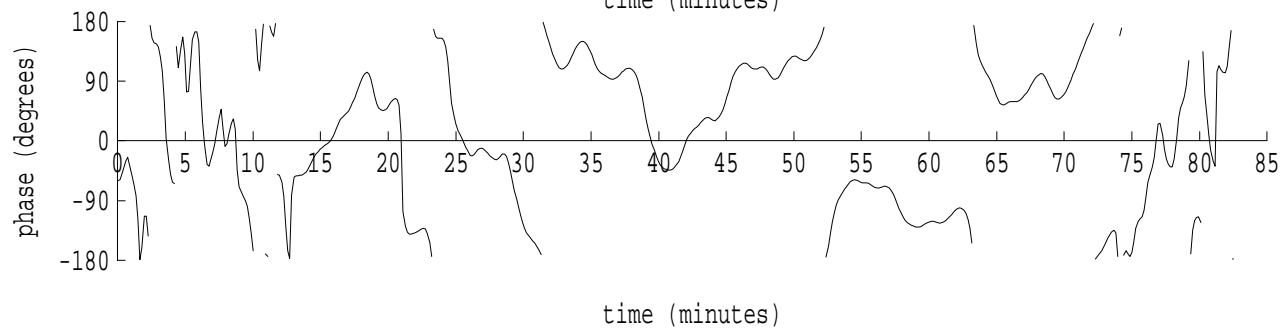
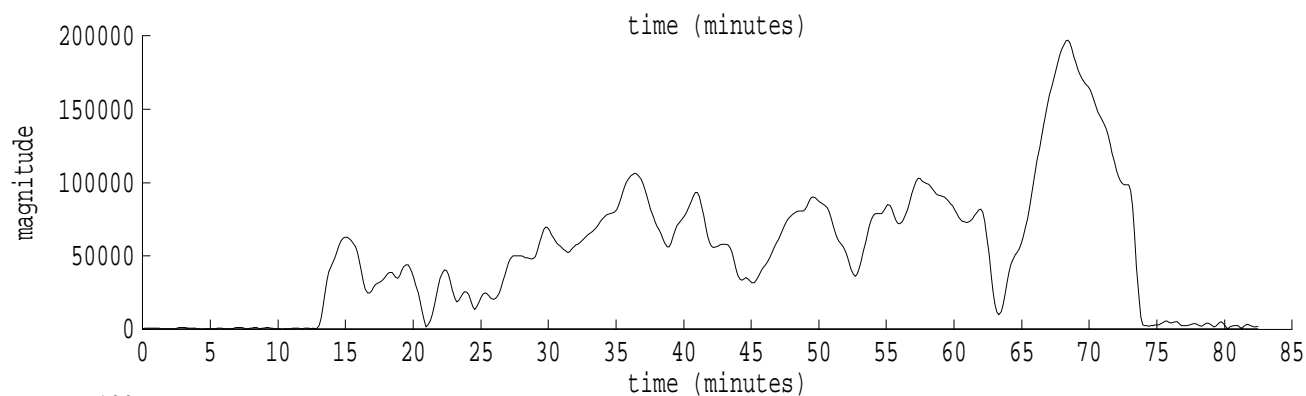
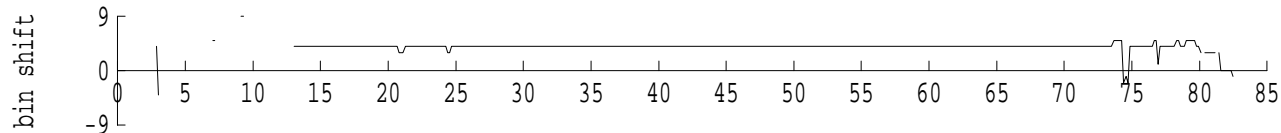
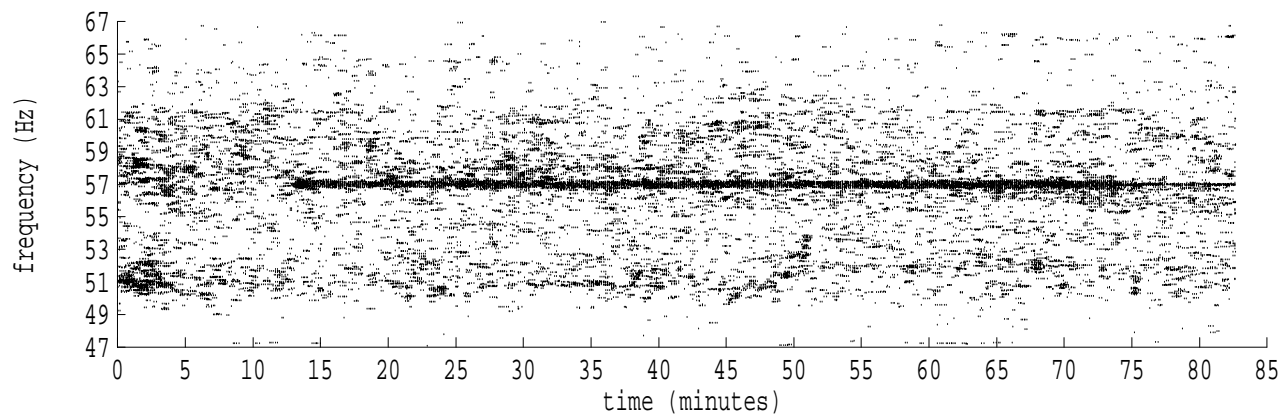
fft size: 16384  
overlap: 7/8  
sw\_hamm: 1  
sample rate: 228 Hz  
bin width: 0.0139 Hz  
int time: 71.86 sec  
bin freq: 57.056 Hz  
threshold: 2.50  
r\_max: 130076  
c rms: 62638  
n (rms): 463  
offset: 4  
pkr median: 538  
ave median: 618  
nor median: 779  
sdv median: 174  
n median: 96  
peak snr: 44.4 dB  
c snr: 38.1 dB  
sw\_line: 1  
sw\_theta: 1  
freq: 57.0566 Hz  
ship spd: 1.486 m/s  
2.891 knts

Heard Island - Ascension Island (PC1) File: a0271330.sam Ch. 3 Julian:027:13:30:13



fft size: 16384  
overlap: 7/8  
sw\_hamm: 1  
sample rate: 228 Hz  
bin width: 0.0139 Hz  
int time: 71.86 sec  
bin freq: 57.056 Hz  
threshold: 2.50  
r\_max: 104415  
c rms: 51626  
n (rms): 471  
offset: 4  
pkr median: 471  
ave median: 509  
nor median: 529  
sdv median: 56  
n median: 99  
peak snr: 45.9 dB  
c snr: 39.8 dB  
sw\_line: 1  
sw\_theta: 1  
freq: 57.0563 Hz  
ship spd: 1.479 m/s  
2.877 knts

Heard Island - Ascension Island (PC1) File: a0271330.sam Ch. 4 Julian:027:13:30:13



fft size: 16384  
overlap: 7/8  
sw\_hamm: 1  
sample rate: 228 Hz  
bin width: 0.0139 Hz  
int time: 71.86 sec  
bin freq: 57.056 Hz  
threshold: 2.50  
r\_max: 197333  
c rms: 73692  
n (rms): 469  
offset: 4  
pkr median: 398  
ave median: 417  
nor median: 445  
sdv median: 47  
n median: 89  
peak snr: 52.9 dB  
c snr: 44.4 dB  
sw\_line: 1  
sw\_theta: 1  
freq: 57.0562 Hz  
ship spd: 1.477 m/s  
2.872 knts