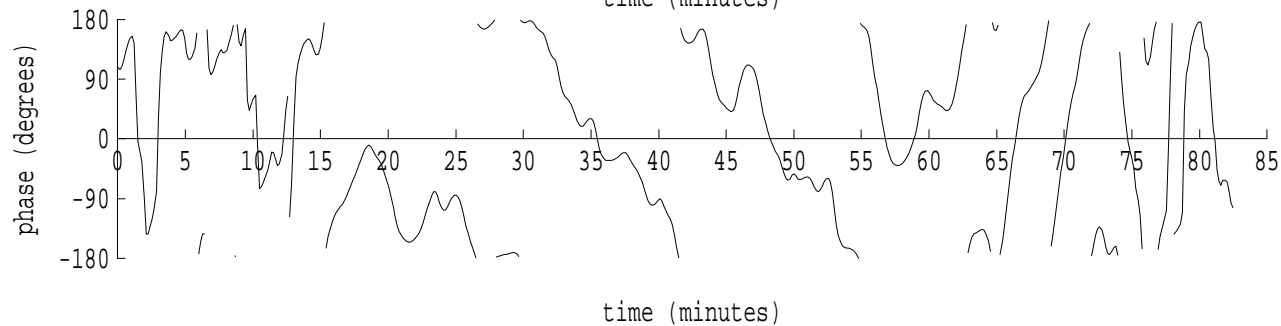
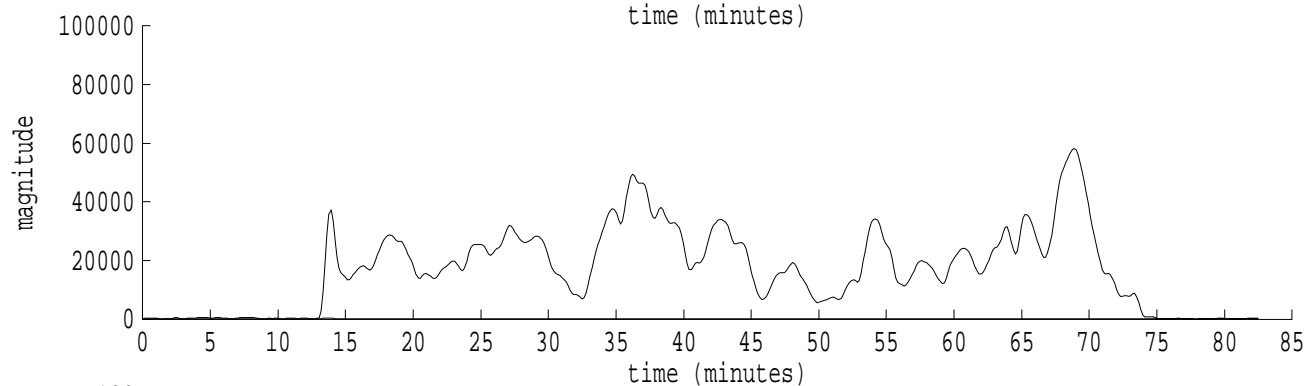
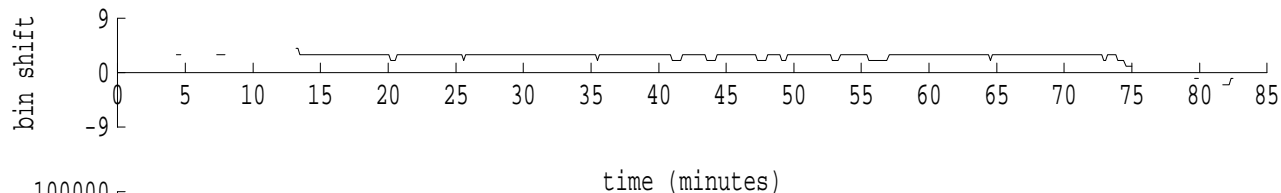
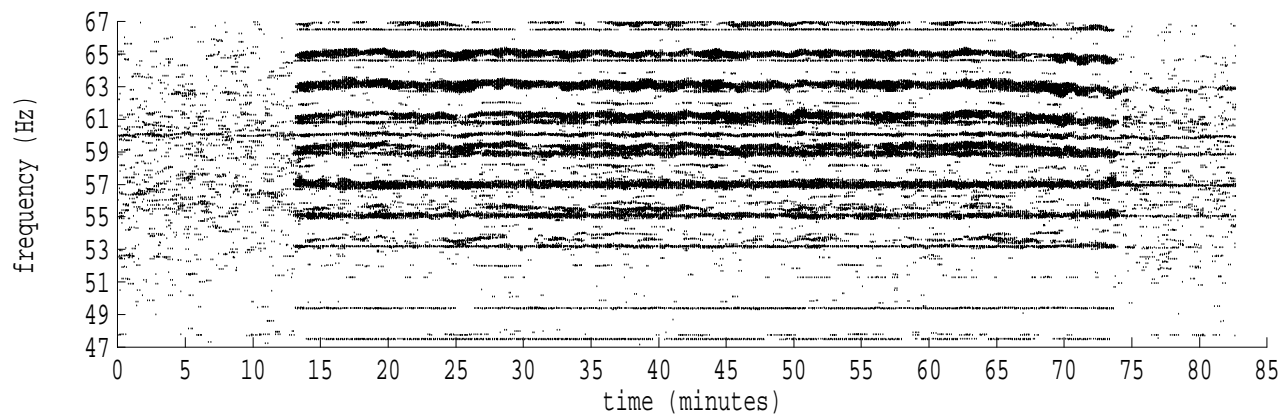
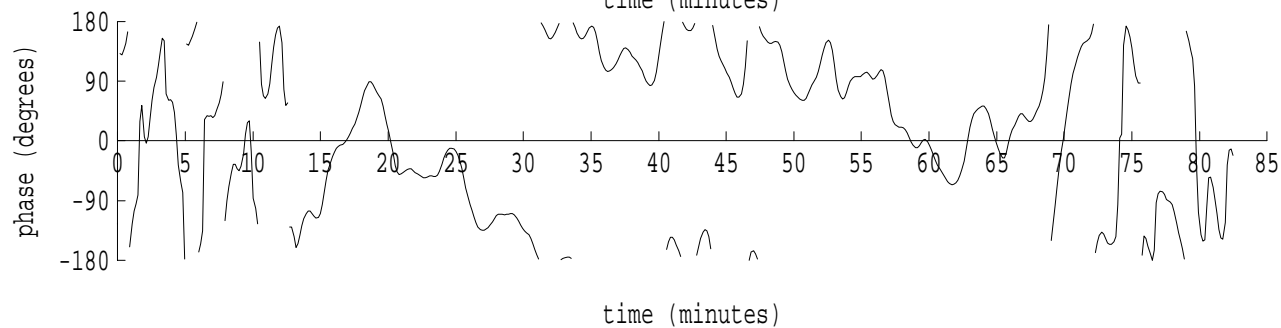
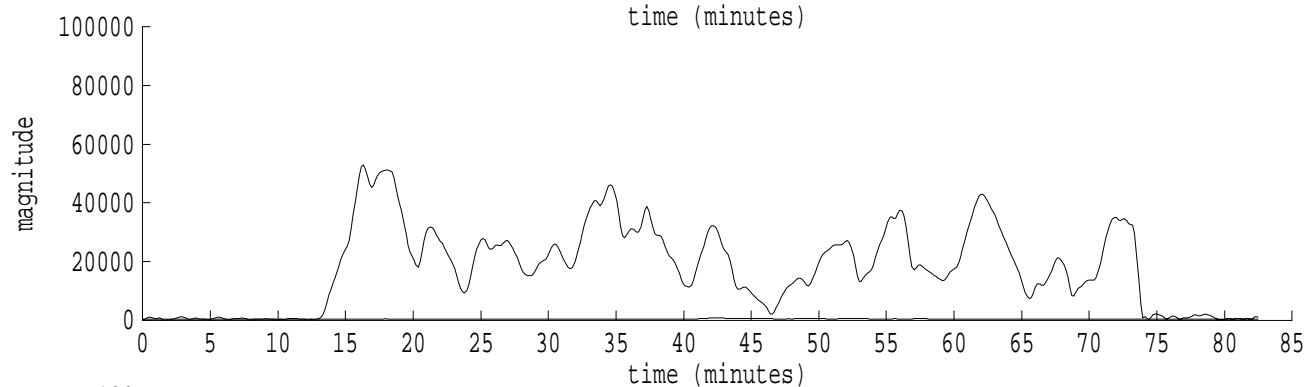
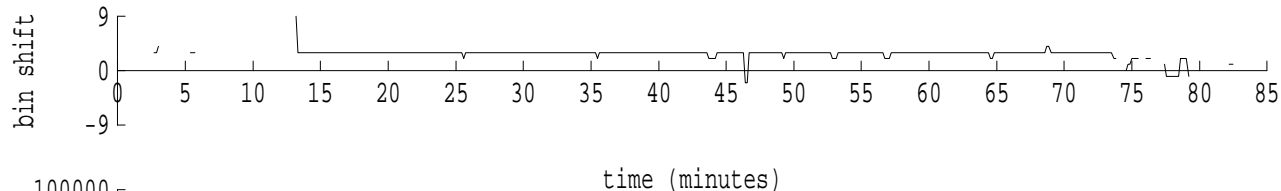
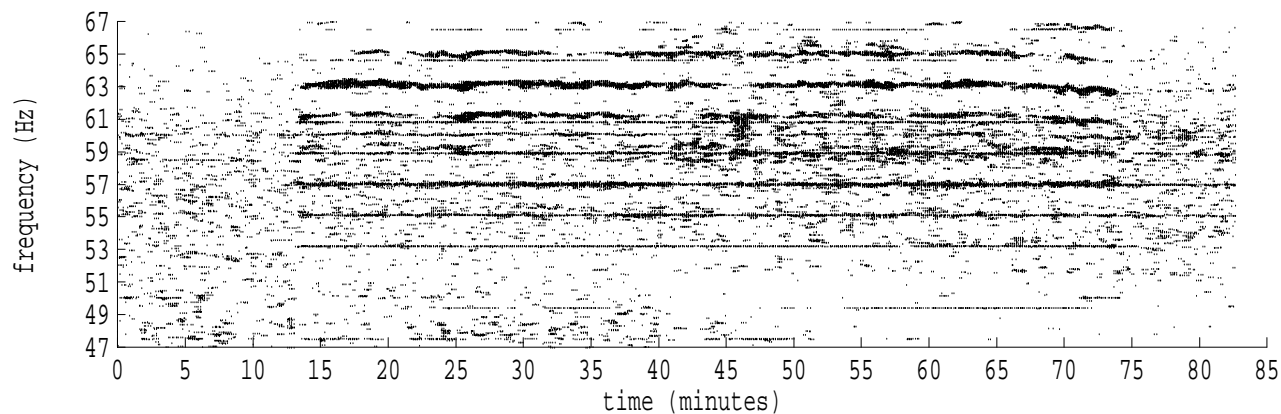


Heard Island - Ascension Island (PC1) File: a0260430.sam Ch. 1 Julian:026:04:30:13



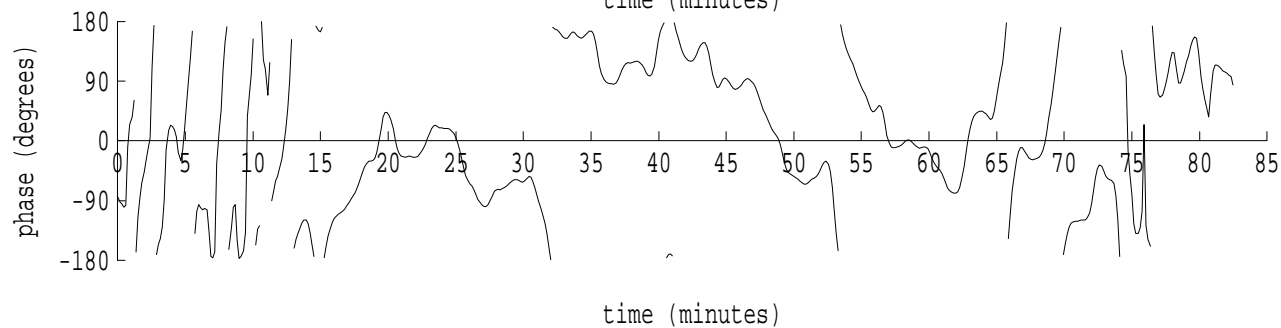
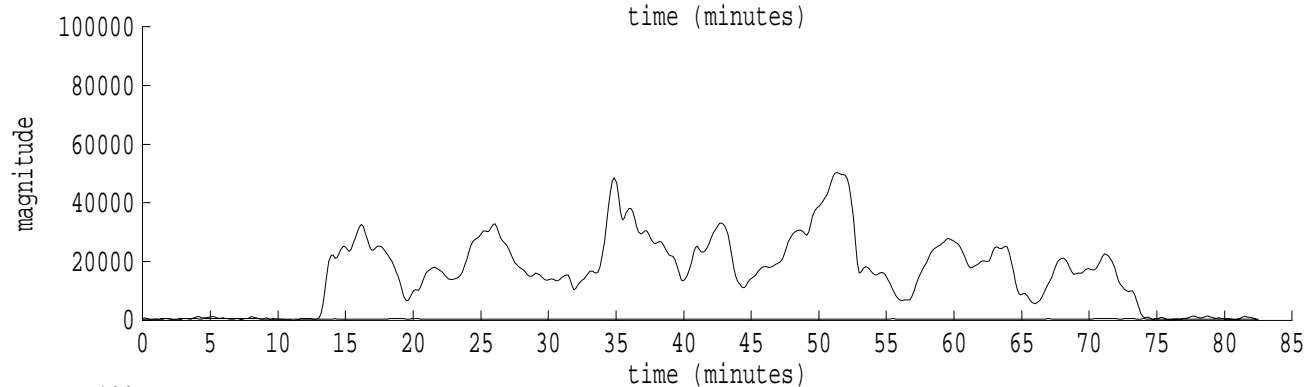
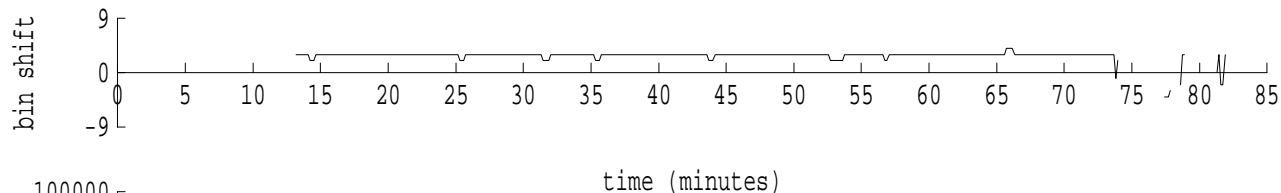
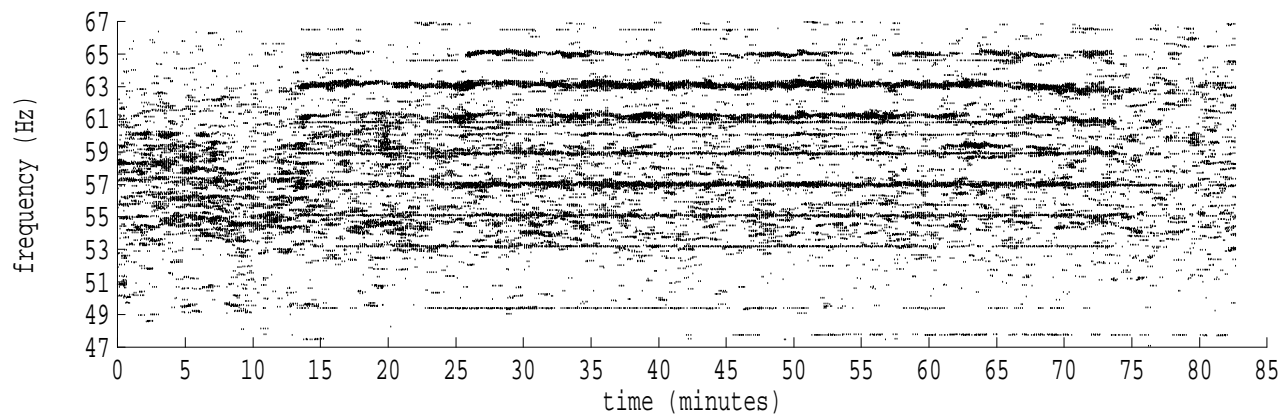
fft size: 16384  
overlap: 7/8  
sw\_hamm: 1  
sample rate: 228 Hz  
bin width: 0.0139 Hz  
int time: 71.86 sec  
bin freq: 57.042 Hz  
threshold: 2.50  
r\_max: 58247  
c rms: 24446  
n (rms): 432  
offset: 3  
pkr median: 192  
ave median: 171  
nor median: 202  
sdv median: 56  
n median: 137  
peak snr: 49.2 dB  
c snr: 41.7 dB  
sw\_line: 1  
sw\_theta: 1  
freq: 57.0388 Hz  
ship spd: 1.021 m/s  
1.985 knts

Heard Island - Ascension Island (PC1) File: a0260430.sam Ch. 2 Julian:026:04:30:13



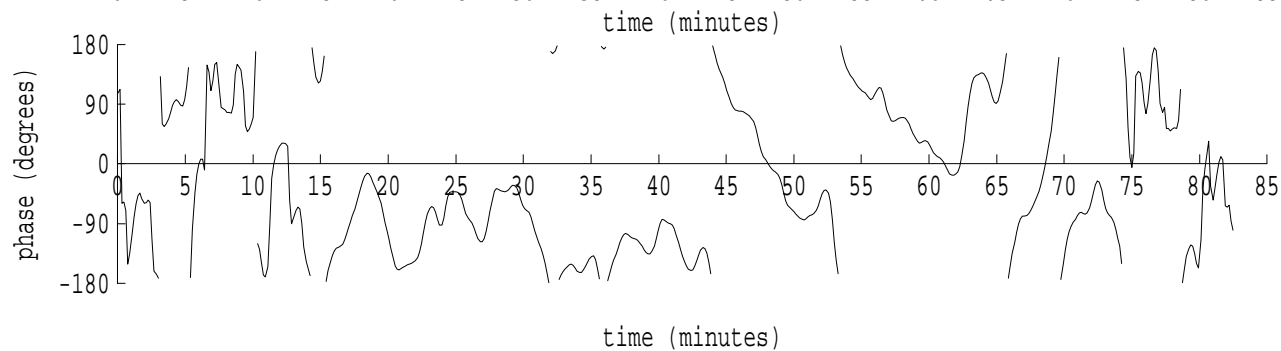
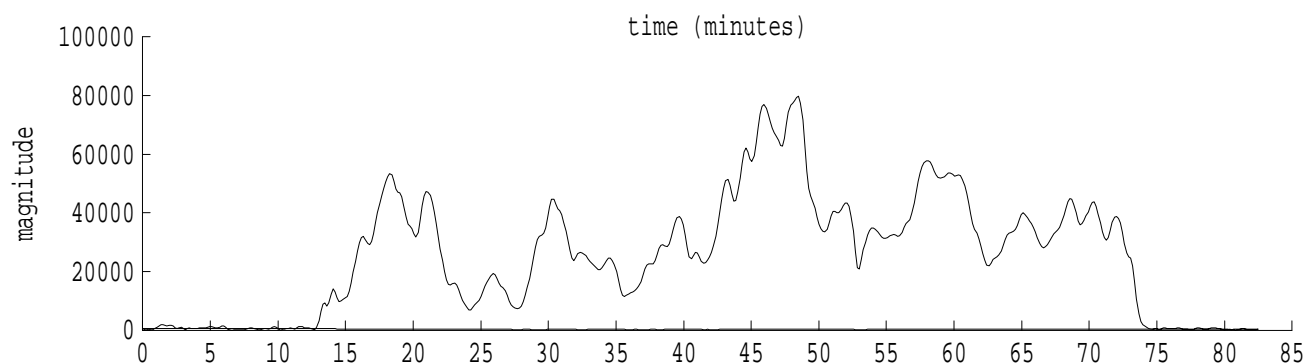
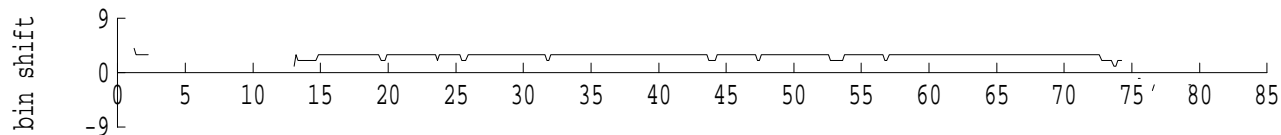
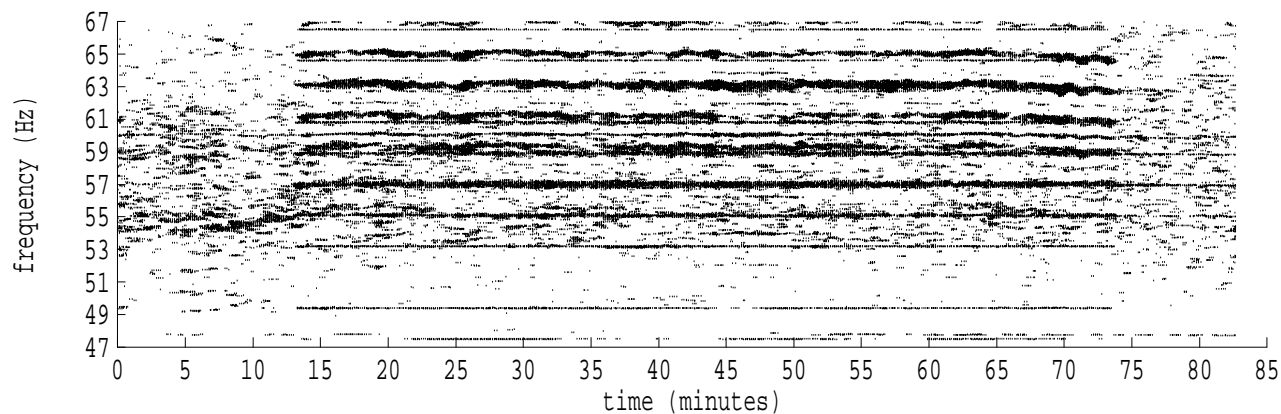
fft size: 16384  
overlap: 7/8  
sw\_hamm: 1  
sample rate: 228 Hz  
bin width: 0.0139 Hz  
int time: 71.86 sec  
bin freq: 57.042 Hz  
threshold: 2.50  
r\_max: 53016  
c rms: 25149  
n (rms): 439  
offset: 3  
pkr median: 454  
ave median: 431  
nor median: 368  
sdv median: 27  
n median: 123  
peak snr: 43.2 dB  
c snr: 36.7 dB  
sw\_line: 1  
sw\_theta: 1  
freq: 57.0394 Hz  
ship spd: 1.035 m/s  
2.012 knts

Heard Island - Ascension Island (PC1) File: a0260430.sam Ch. 3 Julian:026:04:30:13



fft size: 16384  
overlap: 7/8  
sw\_hamm: 1  
sample rate: 228 Hz  
bin width: 0.0139 Hz  
int time: 71.86 sec  
bin freq: 57.042 Hz  
threshold: 2.50  
r\_max: 50362  
c rms: 22826  
n (rms): 419  
offset: 3  
pkr median: 447  
ave median: 445  
nor median: 471  
sdv median: 50  
n median: 141  
peak snr: 40.6 dB  
c snr: 33.7 dB  
sw\_line: 1  
sw\_theta: 1  
freq: 57.0391 Hz  
ship spd: 1.028 m/s  
2.000 knts

Heard Island - Ascension Island (PC1) File: a0260430.sam Ch. 4 Julian:026:04:30:13



fft size: 16384  
overlap: 7/8  
sw\_hamm: 1  
sample rate: 228 Hz  
bin width: 0.0139 Hz  
int time: 71.86 sec  
bin freq: 57.042 Hz  
threshold: 2.50  
r\_max: 79732  
c rms: 36648  
n (rms): 426  
offset: 3  
pkr median: 316  
ave median: 351  
nor median: 449  
sdv median: 121  
n median: 139  
peak snr: 45.0 dB  
c snr: 38.2 dB  
sw\_line: 1  
sw\_theta: 1  
freq: 57.0388 Hz  
ship spd: 1.018 m/s  
1.980 knts