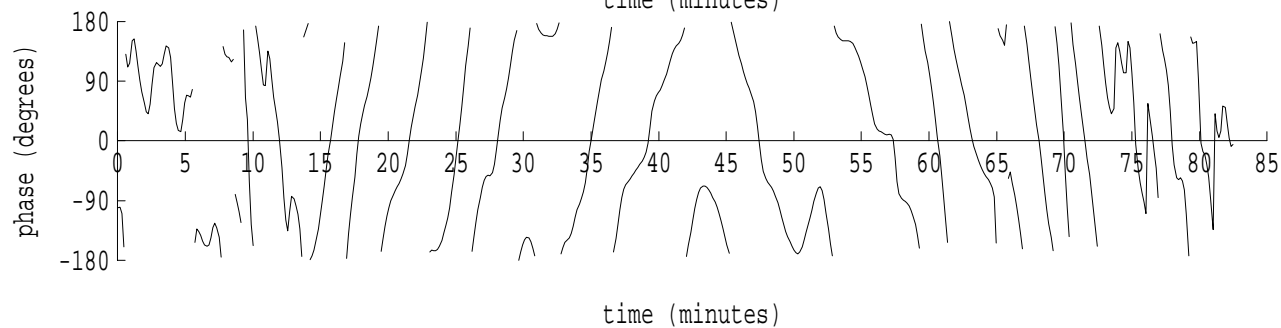
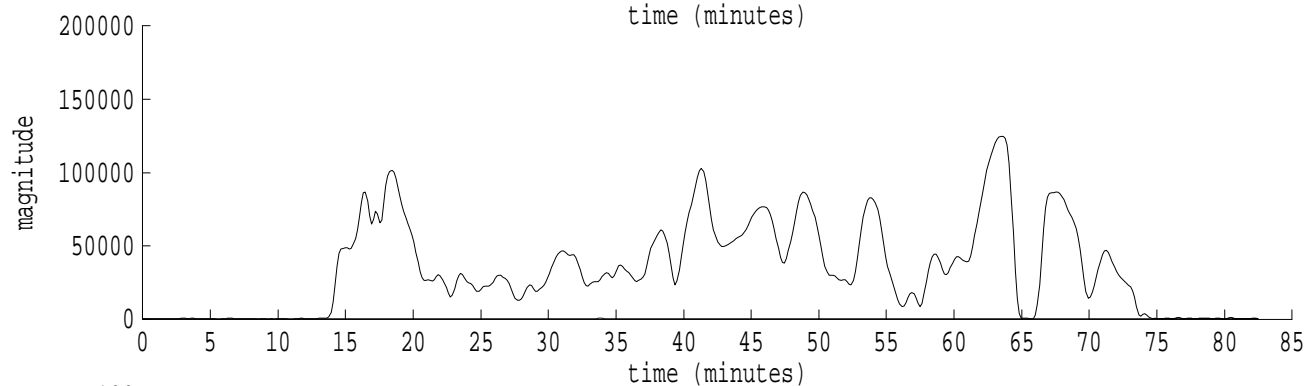
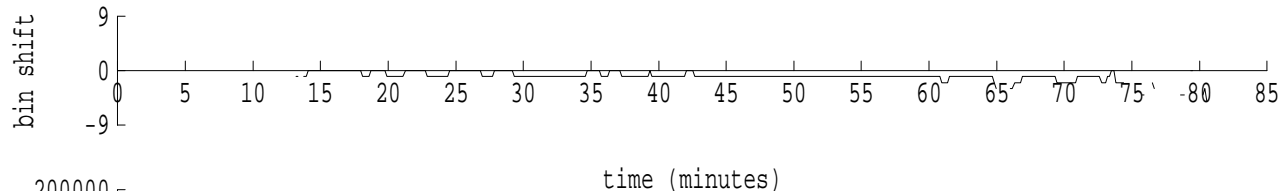
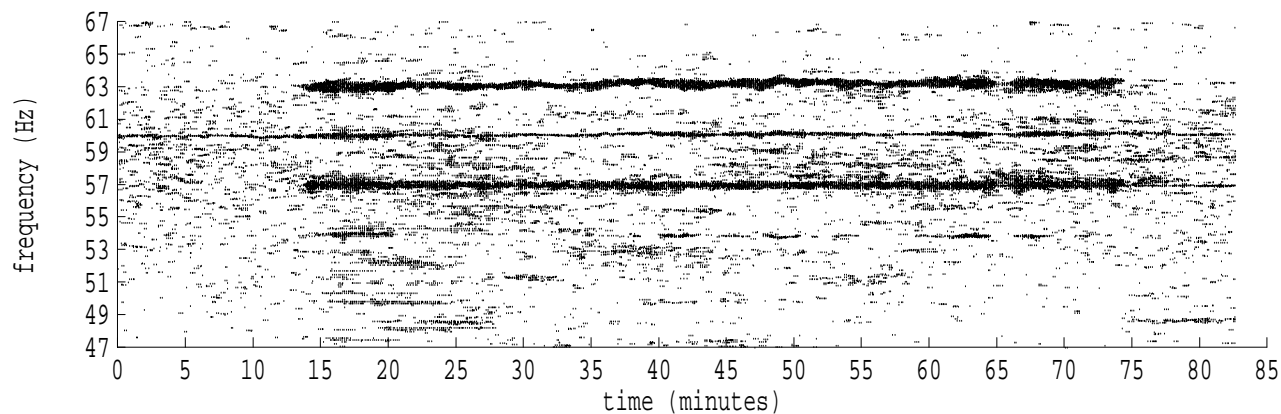
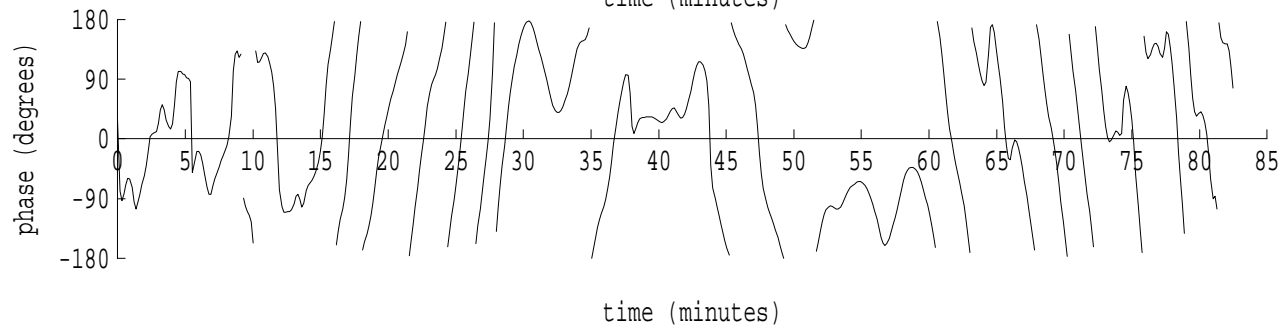
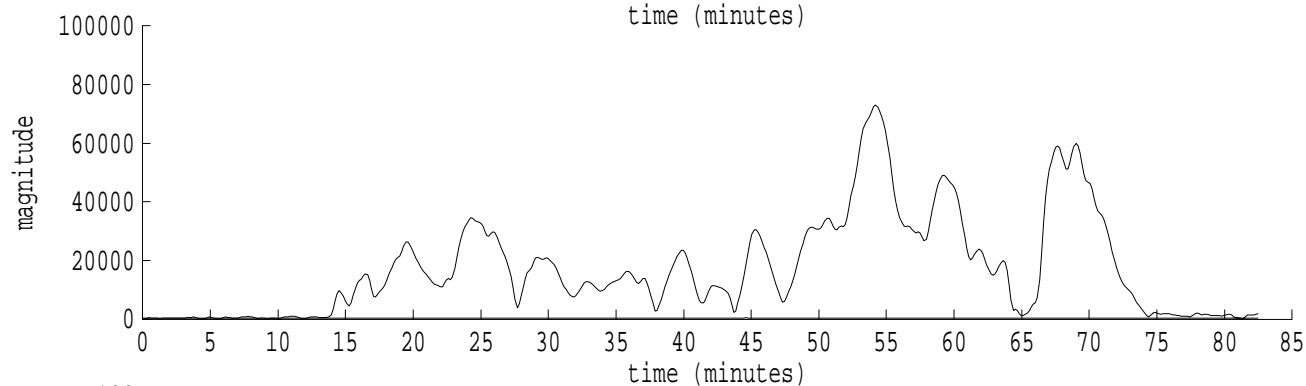
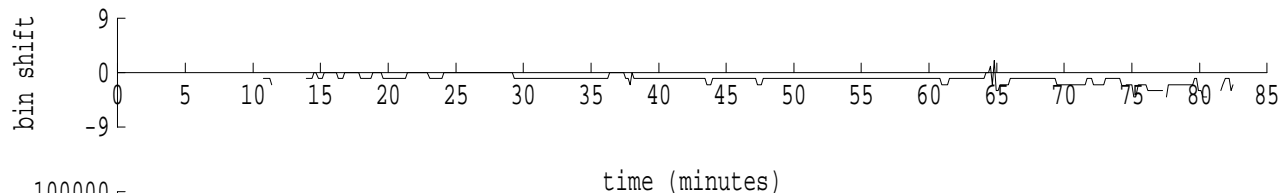
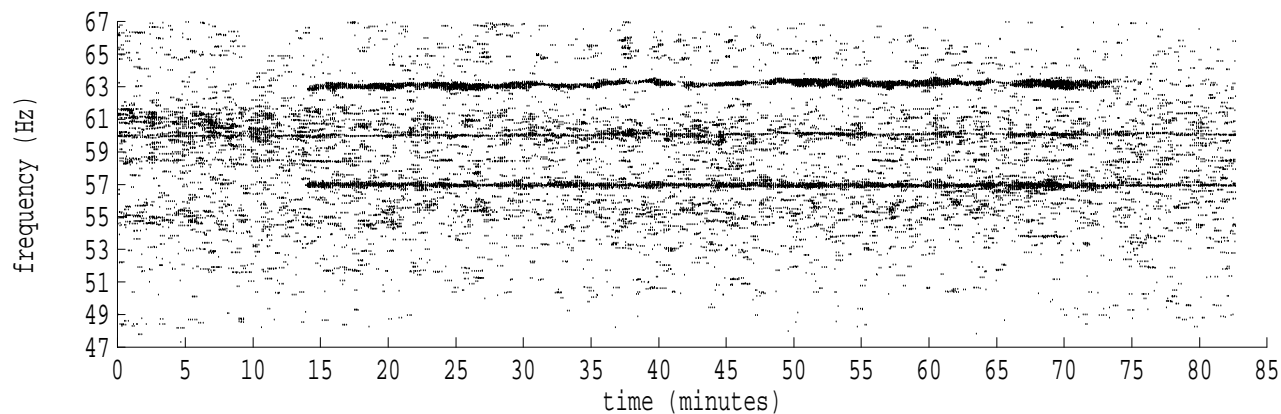


Heard Island - Ascension Island (PC1) File: a0260130.sam Ch. 1 Julian:026:01:30:13



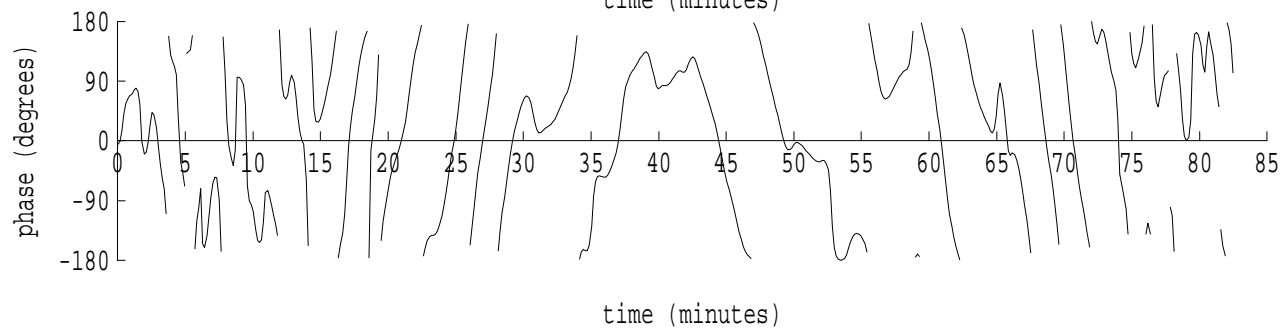
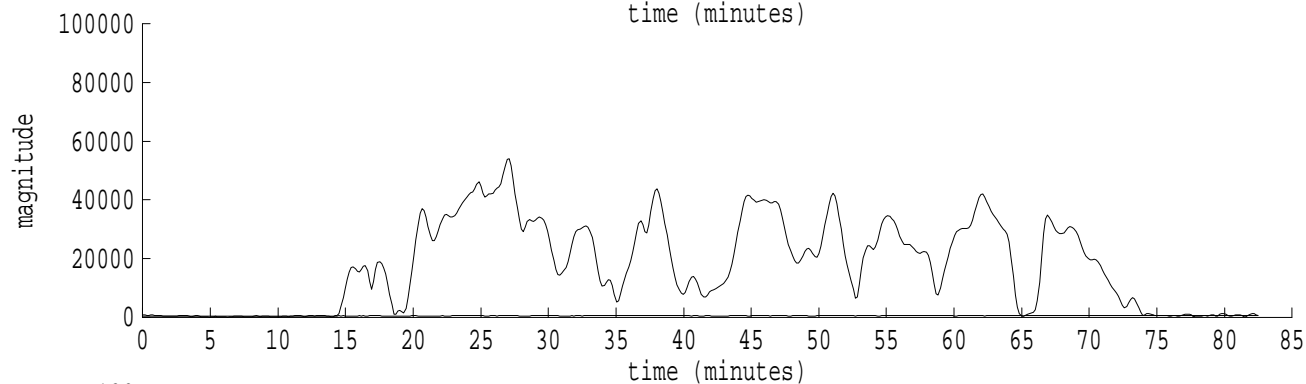
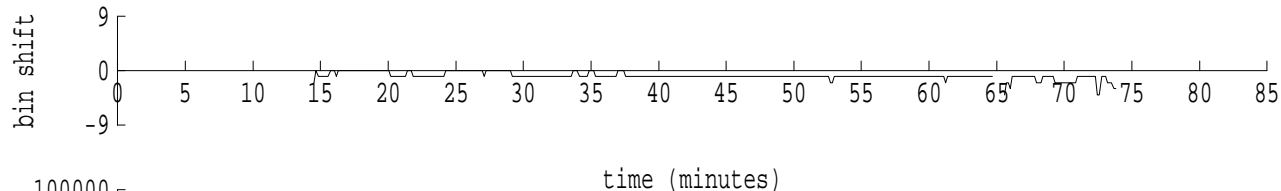
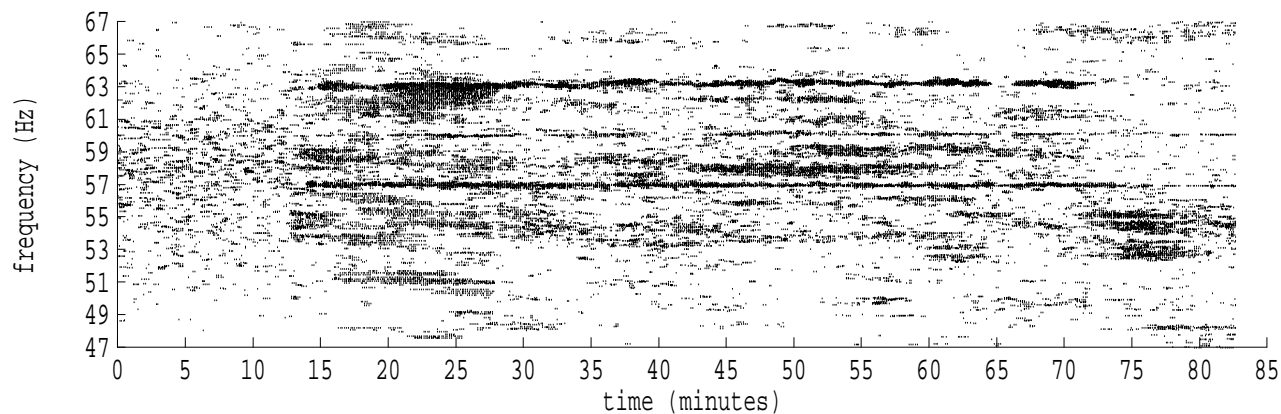
fft size: 16384  
overlap: 7/8  
sw\_hamm: 1  
sample rate: 228 Hz  
bin width: 0.0139 Hz  
int time: 71.86 sec  
bin freq: 56.986 Hz  
threshold: 2.50  
r\_max: 128599  
c rms: 52533  
n (rms): 415  
offset: -1  
pkr median: 341  
ave median: 327  
nor median: 293  
sdv median: 23  
n median: 149  
peak snr: 52.8 dB  
c snr: 45.0 dB  
sw\_line: 1  
sw\_theta: 1  
freq: 56.9881 Hz  
ship spd: -0.313 m/s  
-0.608 knts

Heard Island - Ascension Island (PC1) File: a0260130.sam Ch. 2 Julian:026:01:30:13



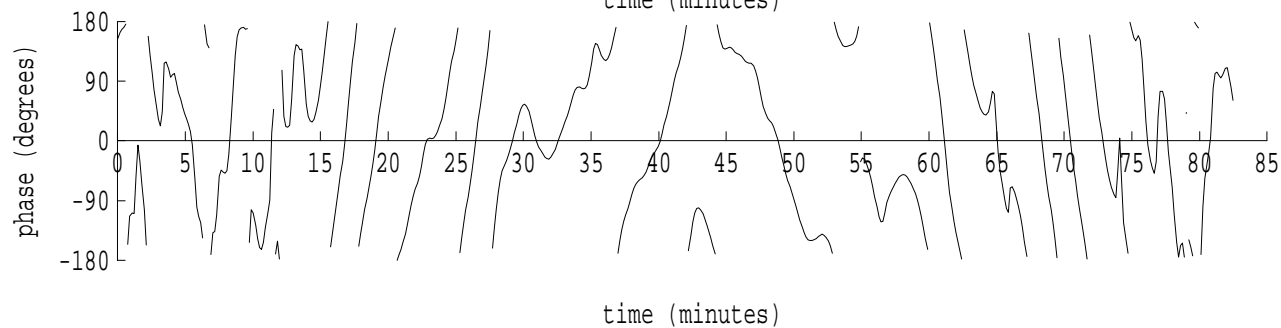
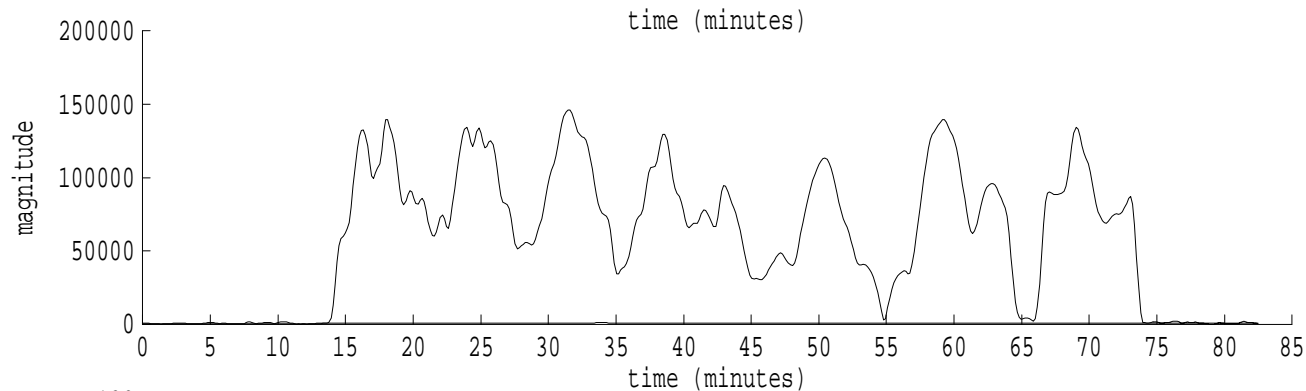
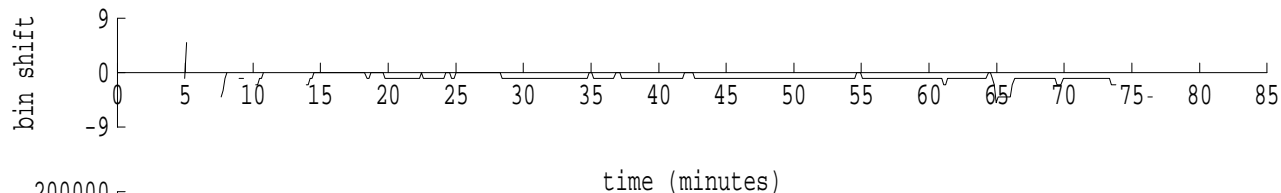
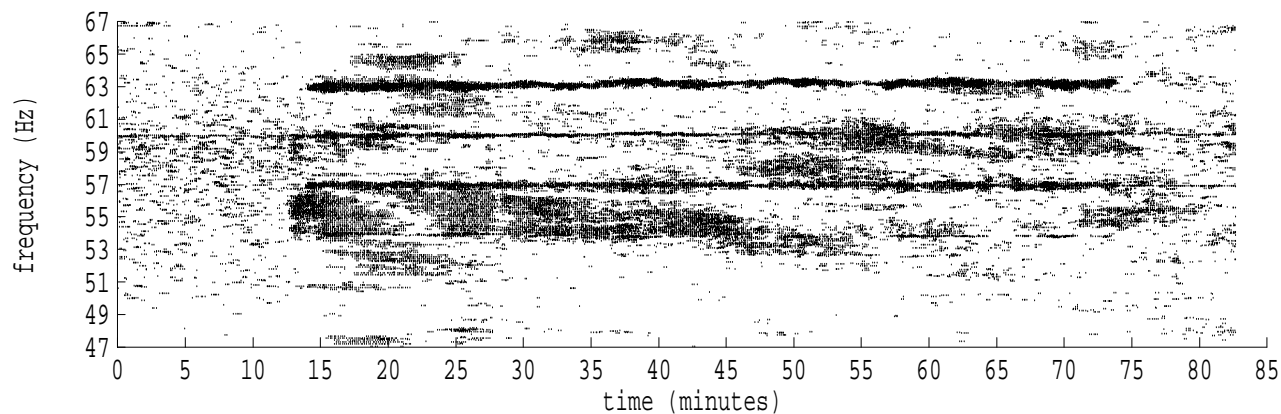
fft size: 16384  
overlap: 7/8  
sw\_hamm: 1  
sample rate: 228 Hz  
bin width: 0.0139 Hz  
int time: 71.86 sec  
bin freq: 56.986 Hz  
threshold: 2.50  
r\_max: 72996  
c rms: 26412  
n (rms): 457  
offset: -1  
pkr median: 410  
ave median: 388  
nor median: 387  
sdv median: 37  
n median: 102  
peak snr: 45.5 dB  
c snr: 36.7 dB  
sw\_line: 1  
sw\_theta: 1  
freq: 56.9870 Hz  
ship spd: -0.342 m/s  
-0.666 knts

Heard Island - Ascension Island (PC1) File: a0260130.sam Ch. 3 Julian:026:01:30:13



fft size: 16384  
overlap: 7/8  
sw\_hamm: 1  
sample rate: 228 Hz  
bin width: 0.0139 Hz  
int time: 71.86 sec  
bin freq: 56.986 Hz  
threshold: 2.50  
r\_max: 62416  
c rms: 27133  
n (rms): 392  
offset: -1  
pkr median: 524  
ave median: 491  
nor median: 435  
sdv median: 142  
n median: 166  
peak snr: 43.1 dB  
c snr: 35.9 dB  
sw\_line: 1  
sw\_theta: 1  
freq: 56.9871 Hz  
ship spd: -0.338 m/s  
-0.657 knts

Heard Island - Ascension Island (PC1) File: a0260130.sam Ch. 4 Julian:026:01:30:13



fft size: 16384  
overlap: 7/8  
sw\_hamm: 1  
sample rate: 228 Hz  
bin width: 0.0139 Hz  
int time: 71.86 sec  
bin freq: 56.986 Hz  
threshold: 2.50  
r\_max: 171373  
c rms: 84861  
n (rms): 420  
offset: -1  
pkr median: 759  
ave median: 693  
nor median: 569  
sdv median: 148  
n median: 143  
peak snr: 49.6 dB  
c snr: 43.5 dB  
sw\_line: 1  
sw\_theta: 1  
freq: 56.9879 Hz  
ship spd: -0.319 m/s  
-0.620 knts